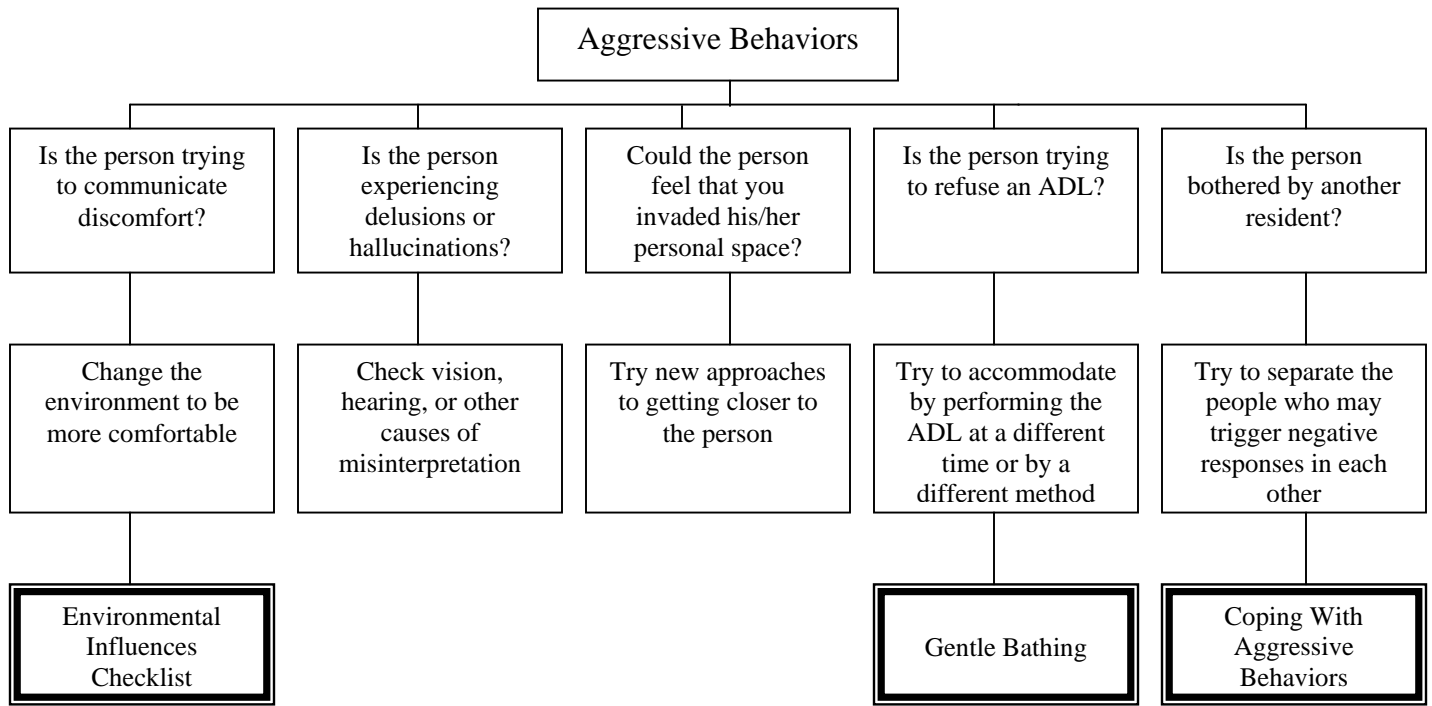


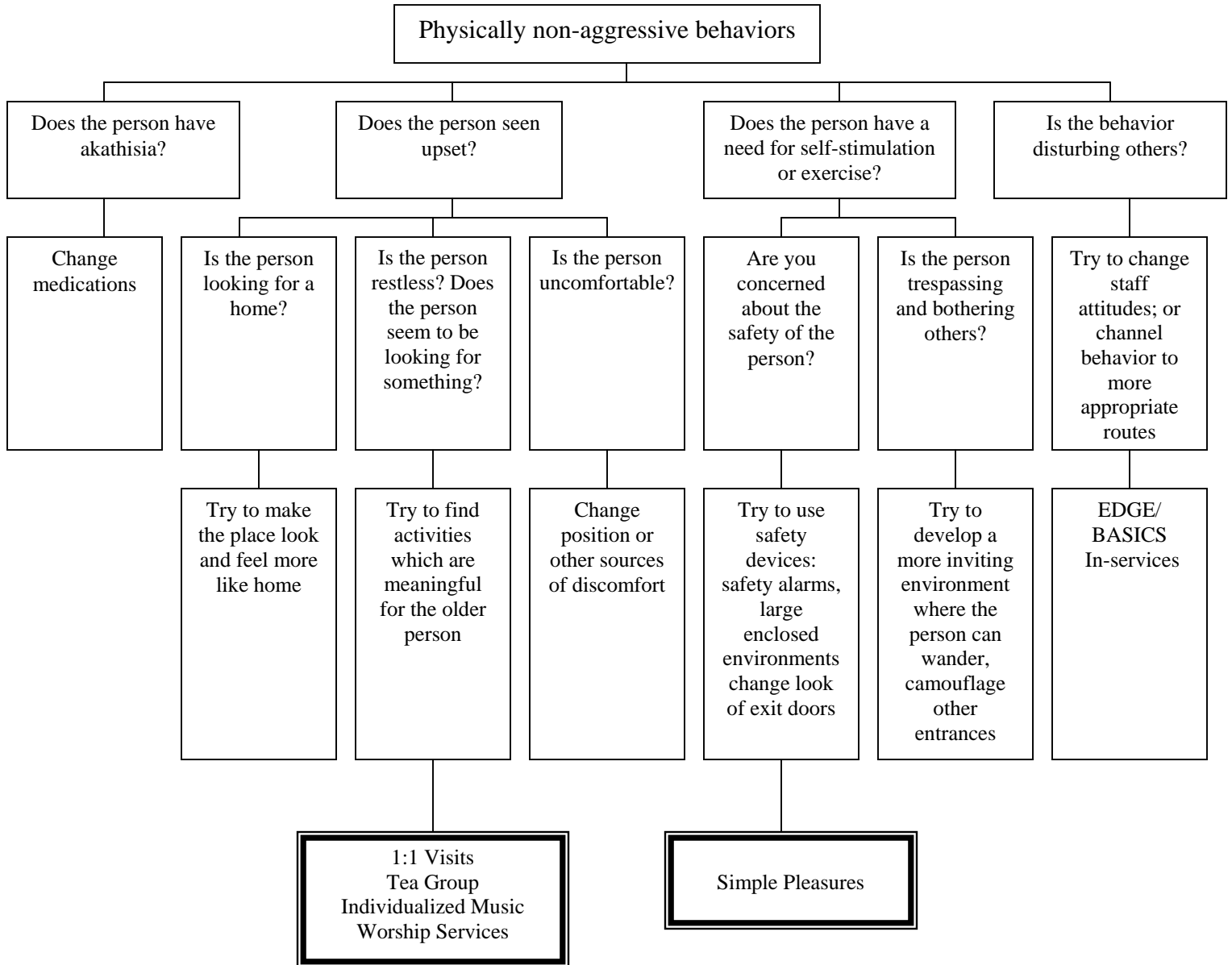
## APPROACHES TO MANAGING THE THREE MAJOR SYNDROMES OF DISRUPTIVE BEHAVIOR

We have adapted the needs-based model (Cohen-Mansfield, 2000) to link **unmet needs** expressed as disruptive behavior assessed using the methodology above or similar methodology, **possible underlying causes with matched approaches**, and **specific interventions** provided in EDGE. Each trial of an intervention should be evaluated using 24-hour documentation for a period of 2-4 weeks to assess its effectiveness.

### Aggressive behaviors



# Physically non-aggressive behaviors



# Verbal Agitation

