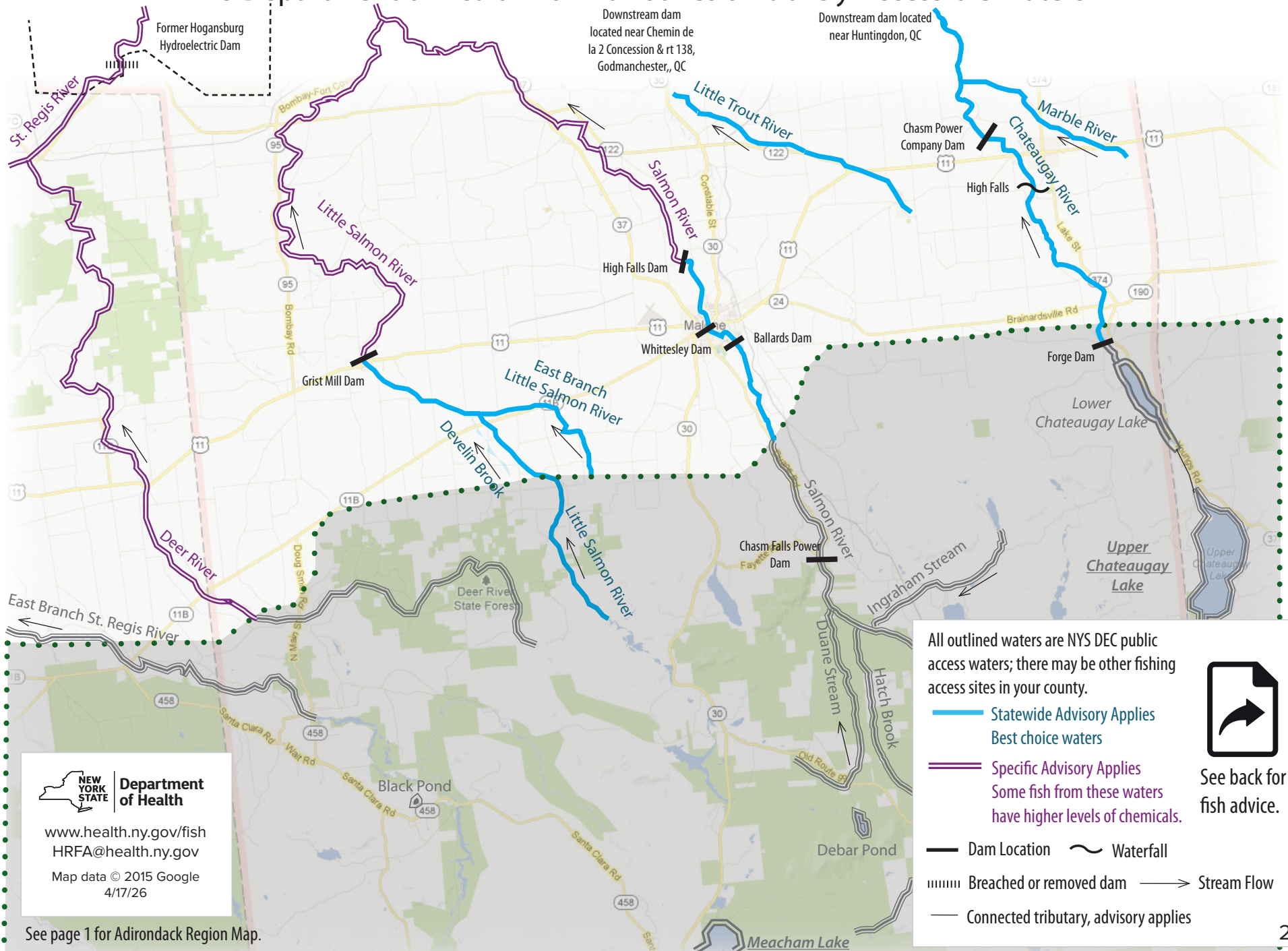


Northern Franklin County Fishing Waters

NYS Department of Health Fish Advisories & Publicly Accessible Waters



All outlined waters are NYS DEC public access waters; there may be other fishing access sites in your county.

- Statewide Advisory Applies
Best choice waters
- Specific Advisory Applies
Some fish from these waters
have higher levels of chemicals.
- Dam Location
- ~ Waterfall
- Branded or removed dam
- Stream Flow
- Connected tributary, advisory applies

↪

See back for fish advice.

NEW YORK STATE Department of Health

www.health.ny.gov/fish
HRFA@health.ny.gov

Map data © 2015 Google
4/17/26



See page 1 for Adirondack Region Map.

Southern Franklin County Fishing Waters

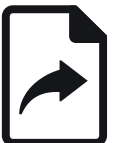
NYS Department of Health Fish Advisories & Publicly Accessible Waters



All outlined waters are NYS DEC/DEP public access waters; there may be other fishing access sites in your county.

-  Adirondack Regional Advisory Applies
The Adirondack region has been more affected by mercury. Fish from these waters are still a good choice.
-  Adirondack Specific Advisory Applies
Some fish from these waters have elevated mercury.

-  Dam Location
-  Waterfall
-  Stream Flow
-  Connected Tributary, Advisory Applies




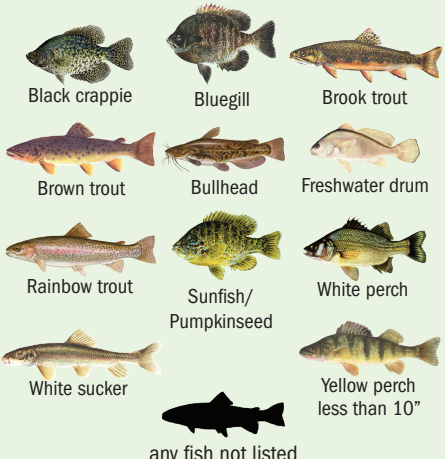
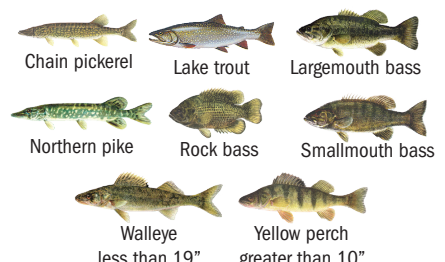



See back for fish advice.



www.health.ny.gov/fish
HRFA@health.ny.gov
Map data © 2015 Google
4/17/26

Franklin County Fishing Waters

 General Population	 Follow the Adirondack Region Advisory for waters in green	 Sensitive Population
4 meals a month	<div style="border: 2px solid green; padding: 5px; text-align: center;"> *Best Choice Fish* </div> 	1 meal a month
1 meal a month	<p style="text-align: center;">Eat Less</p> 	0 DON'T EAT
0 DON'T EAT	 <p style="text-align: center;">Walleye greater than 19"</p>	0 DON'T EAT

The Sensitive Population refers to people who can become pregnant (under age 50) and children under 15. The General Population refers to everyone else.

Visit health.ny.gov/fish for a listing of all fish advisories.

Follow these specific advisories for waters in pink

Waterbody	Fish	General Population	Sensitive Population
Franklin Falls Flow/ Pond	Walleye	DON'T EAT	DON'T EAT
	All other fish	Follow Adirondack Regional Advisory	
Lake Flower	Northern pike	Greater than 26", DON'T EAT; Less than 26", up to 1 meal/month	DON'T EAT
	All other fish	Follow Adirondack Regional Advisory	
Lower Chateaugay Lake	Yellow perch	Up to 1 meal/month	Greater than 10", DON'T EAT; Less than 10", up to 1 meal/month
	All other fish	Follow Adirondack Regional Advisory	
Meacham Lake	Smallmouth bass	DON'T EAT	DON'T EAT
	Yellow perch	DON'T EAT	DON'T EAT
	All other fish	Follow Adirondack Regional Advisory	
Oseetah Lake	Northern pike	Greater than 26", DON'T EAT; Less than 26", up to 1 meal/month	DON'T EAT
	All other fish	Follow Adirondack Regional Advisory	
Tupper Lake	Smallmouth bass	Greater than 26", DON'T EAT; Less than 15", up to 1 meal/month	DON'T EAT
	All other fish	Follow Adirondack Regional Advisory	