

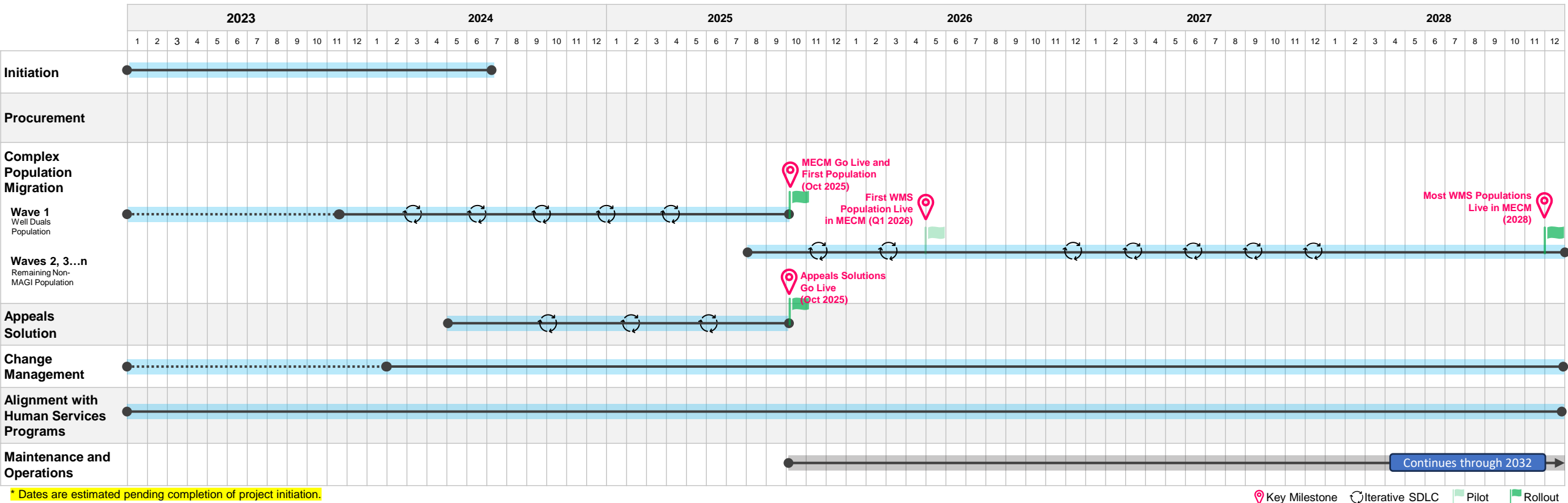
MECM SDLC Overview

The MECM SDLC Methodology will follow a hybrid SDLC approach. This means certain phases of the SDLC in a Wave will be done in sequence where a Stage Gate is used to exit one phase and begin the next while other Wave phases will occur iteratively and in parallel to each other. Exit criteria defines the items requiring completion and or approvals necessary to pass the Stage Gate. It is possible that phases in different Waves may be worked in parallel, considering the stakeholder engagement needed.

For each Wave and major release, a full SDLC sequence is executed. During this, the Design, Development and SIT phases are organized into iterations. An iteration is a means to deliver working software incrementally during the SDLC allowing project stakeholders to see tangible results from SDLC activities earlier than in a traditional waterfall SDLC methodology. Each iteration will include a Design, Development and SIT phase within it. Iterations allow for overlapping SDLC activities within the Design, Development and SIT phases and will have their own entry and exit criteria (while the phases within an iteration will not have phase gates).

These activities follow requirements prioritization and approval, and any potential changes to these will be managed through the Integrated Change Control Process. This allows incremental design approvals to move approved items more quickly into Development and subsequent SIT processes. As depicted in Slide 3, the dark blue arrow represents a full SDLC sequence to achieve a Wave. Within this, the circular arrow with Design/Development/SIT represents the iterative steps for these activities. The light blue arrow represents the return to the beginning of the SDLC process for the next Wave.

MECM Timeline



Primary Objective → Consumer Centricity

Provide personalized, compassionate support when helping consumers understand, receive, pay for, and make critical decisions around health care services.

Complex Population Migration

- Implement a modern system to support the vision of transitioning the Medicaid complex population to a solution that provides for scalability and expansion of functions and capabilities.
- Migrate, through a series of iterations, the Medicaid complex population to a modern system.

Appeals Solution

- Create a singular, centralized eligibility related appeals solution that enhances coordination across stakeholder groups through the appeals processes.
- Allow stakeholders to track and manage an eligibility related appeal in one system from the time an eligibility appeal is requested to the time a decision is issued.

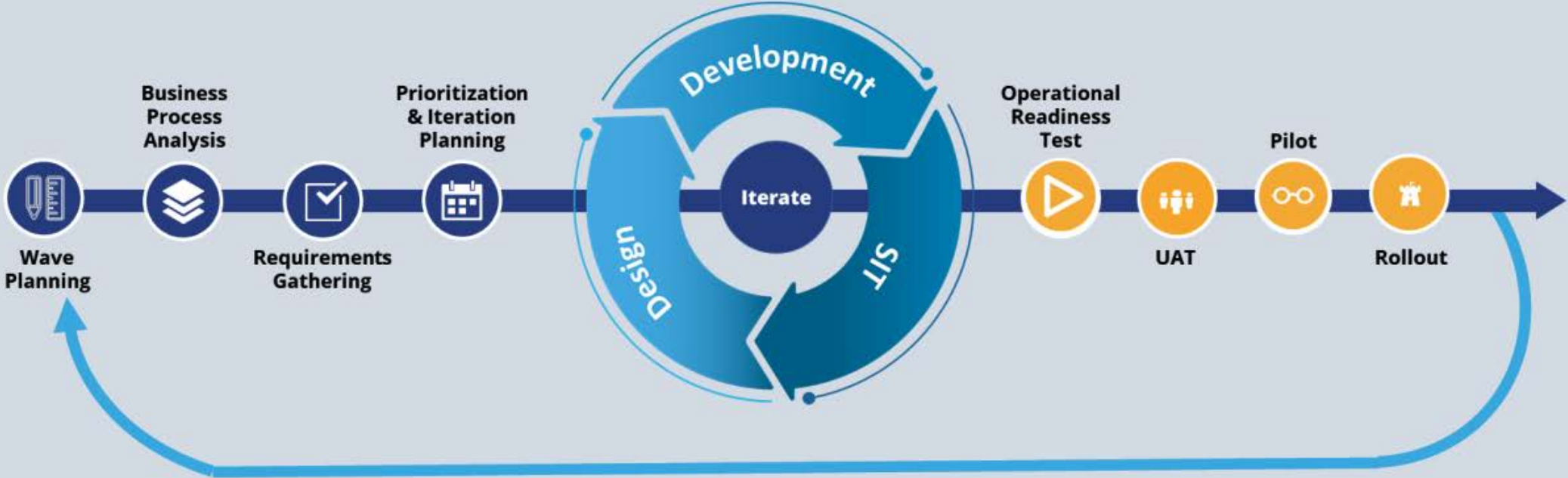
Change Management

- As established by New York State law, plan and implement change for DOH to assume administrative responsibilities for the Medicaid complex population.
- Provide the same quality and level of service to consumers regardless of the channel used (e.g., portal, call center, in-person assistance, and/or certified assistor).

Alignment with Human Services Programs

- Align modernized centralized Medicaid systems and processes with human services systems and processes.
- Prepare and participate in the retirement of the Welfare Management System (WMS) after existing systems are transitioned to new systems.

Approach to Application SDLC



Wave Based implementation
SDLC process for the next wave begins