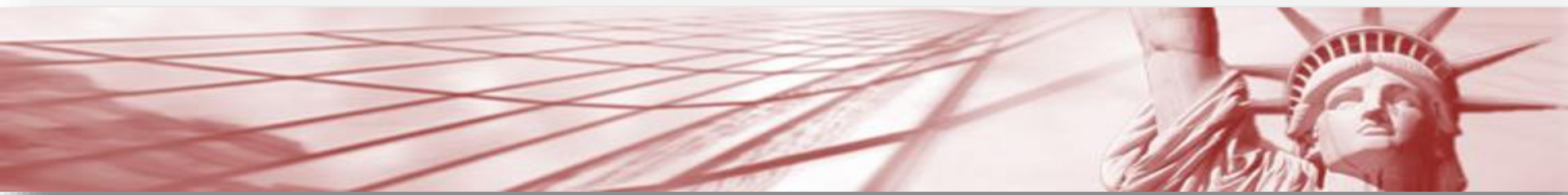


NEW YORK STATE DEPARTMENT OF HEALTH

New York Health Home Learning Collaborative #7



October 2, 2014

Greg Allen, Office of Health Insurance Programs



AGENDA

- Enrollment and Billing
- Health Home Development Funds
- MAPP Vision
- DSRIP Update
- Behavioral Health Transition
- Other Updates
- Q and A

Enrollment Statistics

Statewide Health Home Enrollment – Claims Data Since Program Inception (Based on January 2012 to July 2014 Claims)

33 Unique Health Home Entities Designated under 3 Phases effective 1/1/12, 4/1/12, 7/1/12		
Converting Members	# of HH Recipients Engaged in <i>Outreach</i>	10,501
New Members	# of HH Recipients Engaged in <i>Outreach</i>	185,954
Converting Members	# of HH Recipients Engaged in <i>Active Care Management</i>	53,581
New Members	# of HH Recipients Engaged in <i>Active Care Management</i>	73,441
Total # HH Recipients (Distinct count)		262,348
Total Health Home Eligible Individuals (MHSA and others)		805,000
# of Higher Risk Members		446,000
Higher risk members are identified based on predictive risk model and ambulatory connectivity measure; e.g., those with lower ambulatory connectivity and those more likely to die or have an inpatient or nursing home admission)		
% of Higher Risk Members		55%
% of Higher Risk Members Enrolled or in Outreach		58.8%

Health Home Claims Exceed \$468 Million

Total-to-Date Health Home Claims with DOS between Jan. 2012 to Aug. 2014			
Rate Summary	Unique Recipients w/MA Svc Claims	MA Service Claim Ct	MA Svcs Paid
Health Home Case Mgmt Svcs (Converting)	53,581	555,196	\$310,982,250
Health Home Outreach (Converting)	10,501	19,510	\$9,836,865
Health Home Outreach (New Slots)	185,954	479,120	\$62,304,417
Health Home Services (New Slots)	73,441	416,234	\$85,706,228
Totals (Rate Summary)	262,348	1,470,060	\$468,829,759

State Plan Amendment (SPA) For Health Home Development

- SPA submitted to CMS on September 30, 2014
- Consistent with original Waiver Amendment, Health Home Development Funds would support:
 - Member Engagement and Health Home Promotion
 - Workforce Training and Retraining
 - HIT Implementation – Clinical Connectivity
 - Joint Governance Technical Assistance and Implementation Funds
- Health Home Development Funds will be distributed through a rate add on; methodology and guidance to be developed.

Medicaid Analytic Performance Portal

- The Medicaid Analytics Performance Portal (MAPP) is a performance management system that will provide tools to the Health Home network to support providing care management for the Health Home population.
- Health Home Tracking System functions will be incorporated into MAPP and access expanded to CMAs in early 2015. Future phases will include performance management tools and a care management record.
- A Jump Start Pilot has concluded, ongoing Health Home stakeholder input solicited via polls to Health Homes, MCOs and CMAs, progress reported at biweekly Health Home Webinars.
- MAPP will also support the Delivery System Reform Incentive Payment (DSRIP) program performance and population management technology needs.

Delivery System Reform Incentive Payment Plan (DSRIP)

- DSRIP is a State-wide program.
- Focus is on Public Hospitals and wide variety of Safety Net Providers who provide significant care to Medicaid recipients.
- Background, documents and DSRIP webinars and presentations (including a presentation on Health Homes and DSRIP) available on DOH MRT website at:

https://www.health.ny.gov/health_care/medicaid/redesign/delivery_system_reform_incentive_payment_program.htm

DSRIP Plan: Key Components

- Key focus on reducing avoidable hospital use by 25% over five years.
- DSRIP is an incentive program.
 - ***Payments are based on performance on process and outcome milestones from projects selected from CMS approved Project List***
- *Key theme is collaboration.* Communities of eligible providers will be required to form Performing Provider Systems to develop DSRIP project proposals.
- The State also has metrics that must be met in order to keep full DSRIP funding.

DSRIP Plan: Key Components


- DSRIP program proposals includes projects that are divided into three focus areas:
 - Hospital Transition, Public Hospital Innovation, Primary Care Expansion and Vital Access Providers
 - Long Term Care Transformation
 - Public Health Innovation
- Projects must result in substantial, transformative change for the health and behavioral health delivery system
- Safety Net Providers are eligible for a share from the larger portion (95%) of the DSRIP incentive payments earned by their PPS; non-safety net providers share from the remaining 5%.

Performing Provider Systems (PPS)

PPSs should include:

- *Hospitals*
- ***Health Homes***
- *Skilled Nursing Facilities*
- *Clinics & FQHCs*
- *Behavioral Health Providers*
- *Home Care Agencies*
- *Primary Care Providers*
- *Other key stakeholders*

Responsibilities must include:

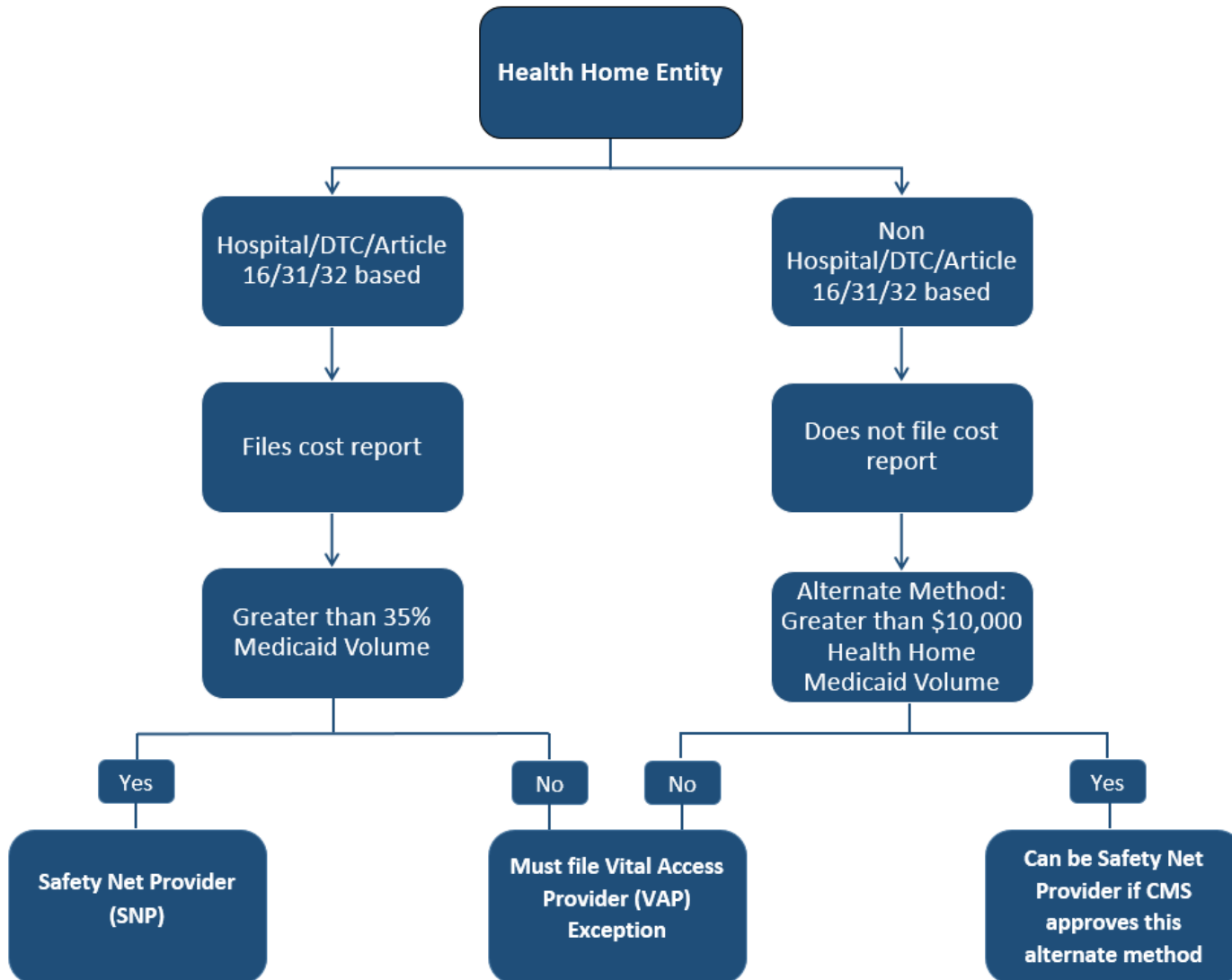


Community health care needs assessment based on multi-stakeholder input and objective data.

Building and implementing a DSRIP Project Plan based upon the needs assessment in alignment with DSRIP strategies.

Meeting and reporting on DSRIP Project Plan process and outcome milestones.

Health Home Safety Net Providers



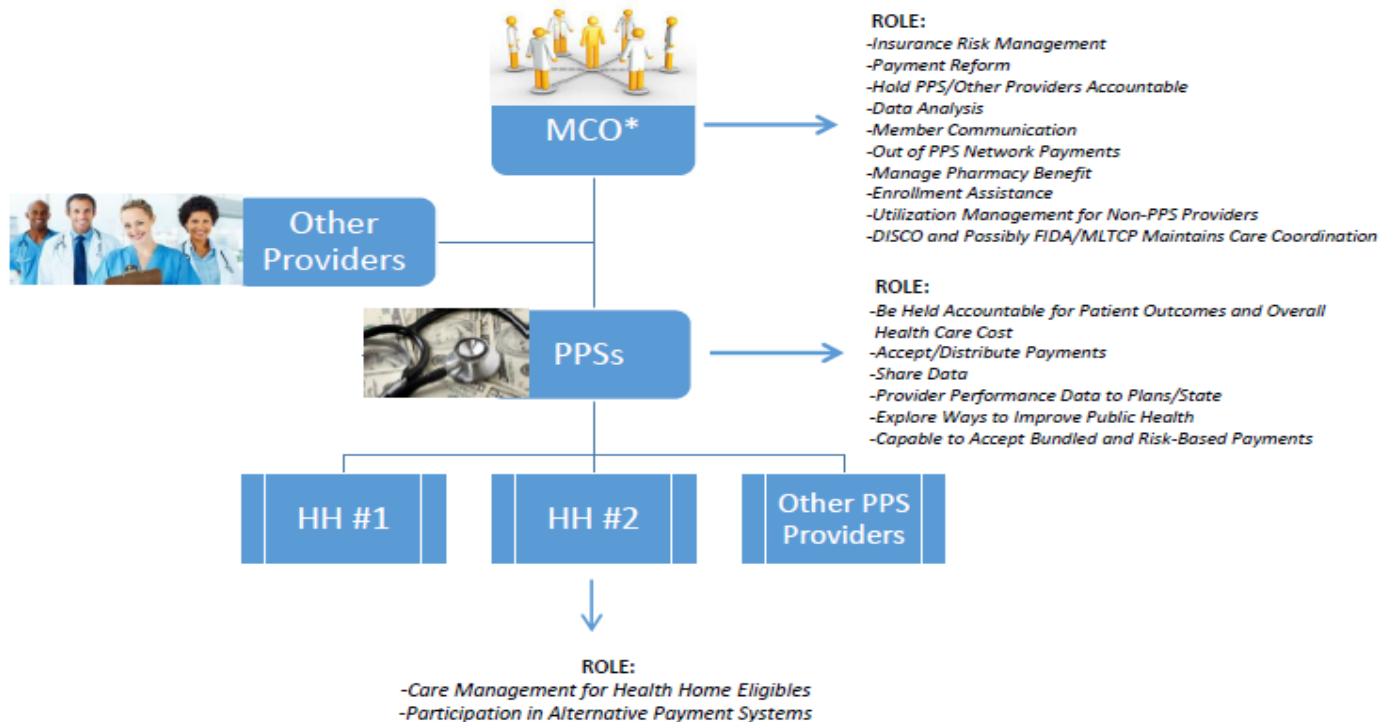
Why are Health Homes so integral to DSRIP?

- The majority of Medicaid members at highest risk for avoidable hospital use are those persons eligible for Health Home care management.
- 59% of hospital readmissions in NYS are related to chronic medical conditions in persons with a Substance Use Disorder or Chronic Mental Health Diagnosis.
- Transforming the system will require the care management in Health Homes combined with a redesign of the health care delivery system to ensure access to primary/preventive healthcare services and to supportive social services.

How Does It All Fit Together?

Five Years in the Future

How The Pieces Fit Together: MCO, PPS & HH



*Mainstream, MLTC, FIDA, HARP & DISCO

HARP and Behavioral Health Transition

- The State submitted a Behavioral Health 1115 Waiver Amendment to CMS on December 30, 2013. This amendment will amend the State's Partnership Plan to authorize the expansion of Behavioral Health services into Managed Care; conversations with CMS are ongoing.
- The State has contracted for a Managed Care Technical Assistance Center (MCTAC). MCTAC will provide tools and trainings to assist behavioral health providers in preparing and improving business and clinical practices as they transition to Medicaid Managed Care. Behavioral Health Medicaid Managed Care Kick-Off Forums have been held downstate, upstate dates posted on the OMH website at: <http://www.omh.ny.gov/>
- Behavioral Health Waiver amendment materials and additional information are posted at (click on Behavioral Health Transitions tab): http://www.health.ny.gov/health_care/medicaid/redesign/

Other Updates

- **Adult Homes**

Ongoing work with the DOH Community Transitions Program with active participation by the Independent Reviewer.

- **ACT**

Guidance on the integration of ACT teams into Health Homes has been released; regional trainings for ACT teams and Health Homes were conducted across the State and ACT teams are joining Health Home networks.

- **MRT Affordable Housing Awards**

Ten organizations will be awarded a maximum of \$400,000 for a tentative contract period beginning Oct. 1, 2014. Thirteen Health Homes will be involved in the pilot and will serve at least 350 members across 20 counties.

Other Updates

- **Health Home Services for Children**

To be responsive to stakeholder comments and to provide more time for the formation of networks and partnerships, the application deadline has been moved to February 1, 2015 with enrollment of children anticipated by July 2015.

- **Health Home Plus**

Health Home Plus, an enhanced model for individuals on AOT status was implemented effective April 1, 2014.

- **Managed Long Term Care/Health Home Enrollment**

Clarity being sought on guidance, policies and procedures for MLTC/HH enrollment.

Outreach and Enrollment 09/2014

/	Unique HH Members Enrolled	Unique HH Members Outreach
+ Health Home 01	1,411	1,021
+ Health Home 03	2,381	670
+ Health Home 04	3,378	738
+ Health Home 05	620	670
+ Health Home 06	1,096	470
+ Health Home 07	6,189	6,625
+ Health Home 08	6,985	11,640
+ Health Home 09	6,064	944
+ Health Home 10	16	0
+ Health Home 11	3,766	638
+ Health Home 12	2,724	828
+ Health Home 13	348	1,143
+ Health Home 14	5,278	5,269
+ Health Home 15	3,108	2,860
+ Health Home 16	457	769
+ Health Home 17	1,897	0
+ Health Home 18	7,170	1,465
+ Health Home 19	4,948	4,704
+ Health Home 20	1,169	1,186
+ Health Home 21	2,111	5,746
+ Health Home 22	2,528	1,744
+ Health Home 23	3,393	2,700
+ Health Home 24	281	710
+ Health Home 25	1,106	742
+ Health Home 26	248	0
+ Health Home 27	1,057	2,895
+ Health Home 28	238	52
+ Health Home 29	1,972	2,220
+ Health Home 30	321	388
+ Health Home 31	1,401	549
+ Health Home 32	9,156	1,226
+ Health Home 37	108	190

Assignments and Performance Metrics Mainstream Plans

09/2014

01/2012 - 09/2014

	Unique HH Members DOH Assigned (Plan)	Unique HH Members MC Assigned (DOH Flagged)	Unique HH Members MC Assigned (MC Flagged)	Unique HH Members Outreach from Assignment (All)	Unique HH Members Enrolled from Assignment (All)	Unique HH Successful Outreach to Enrollment	Unique HH Members Percent Assigned to Outreach (All)	Unique HH Members Percent Assigned to Enrollment (All)	Unique HH Members Percent Engaged
+ MCP 33	743	0	0	27	2	42	0.00	0.00	22.83
+ MCP 50	5,535	633	4	1,037	141	412	72.98	9.92	17.66
+ MCP 60	1,433	748	0	835	93	203	84.69	9.43	16.54
+ MCP 08	742	734	2	1,885	390	284	70.97	14.68	14.06
+ MCP 28	140	878	22	1,156	121	235	43.61	4.56	12.86
+ MCP 09	5,278	17,805	20	2,040	211	467	10.53	1.09	12.83
+ MCP 40	23,716	17,807	125	15,240	1,957	2,509	45.20	5.80	12.32
+ MCP 66	68	578	3	724	58	139	53.59	4.29	12.18
+ MCP 32	1,846	1,151	0	2,139	376	309	92.00	16.17	11.36
+ MCP 51	6,586	4,014	0	9,529	1,089	1,409	82.95	9.48	11.13
+ MCP 04	9,199	3,909	17	10,756	1,138	1,617	80.73	8.54	11.09
+ MCP 11	1,576	7,698	120	10,077	1,209	1,488	52.66	6.32	10.84
+ MCP 44	3,170	4,862	39	7,060	806	907	57.12	6.52	10.81
+ MCP 15	375	2,358	9	3,624	803	911	74.58	16.53	10.40
+ MCP 24	117	386	4	588	85	77	56.54	8.17	10.31
+ MCP 39	218	486	1	778	86	104	75.24	8.32	10.16
+ MCP 23	2,931	344	0	2,499	287	334	101.79	11.69	9.26
+ MCP 59	397	1,186	19	2,976	335	301	62.44	7.03	9.14
+ MCP 20	13,894	18,843	79	31,028	3,207	3,205	65.34	6.75	8.81
+ MCP 61	199	9,902	103	18,420	2,011	1,763	59.65	6.51	8.59
+ MCP 01	396	2,669	43	3,074	207	191	52.34	3.52	5.32

Assignments and Performance Metrics Health Homes

09/2014

01/2012 - 09/2014

	Unique HH Members DOH Assigned (HH)	Unique HH Members MC Assigned (DOH Flagged)	Unique HH Members MC Assigned (MC Flagged)	Unique HH Members Outreach from Assignment (All)	Unique HH Members Enrolled from Assignment (All)	Unique HH Successful Outreach to Enrollment	Unique HH Members Percent Assigned to Outreach (All)	Unique HH Members Percent Assigned to Enrollment (All)	Unique HH Members Percent Engaged
Health Home 31	1,651	1,079	3	1,467	299	571	27.95	5.70	20.68
Health Home 09	2,742	2,707	16	7,565	1,137	2,176	55.94	8.41	20.58
Health Home 03	4,939	1,111	3	3,511	798	751	31.65	7.19	17.76
Health Home 01	2,365	995	1	2,642	536	520	42.75	8.67	16.64
Health Home 19	5,062	6,359	35	16,443	2,692	3,067	59.76	9.78	14.74
Health Home 11	1,622	832	10	3,240	468	492	54.67	7.90	13.46
Health Home 32	1,278	7,849	26	3,654	455	602	20.54	2.56	13.43
Health Home 06	947	1,376	18	3,282	516	499	58.65	9.22	13.25
Health Home 22	1,607	4,255	33	7,049	692	1,081	45.88	4.50	12.88
Health Home 15	1,711	5,400	40	6,706	951	1,061	46.69	6.62	12.53
Health Home 30	593	244	2	1,462	236	188	56.82	9.17	12.03
Health Home 23	3,726	1,550	3	4,708	890	885	46.73	8.83	11.41
Health Home 18	2,243	6,308	85	2,187	429	670	13.72	2.69	10.52
Health Home 04	2,498	4,944	46	4,704	785	633	30.99	5.17	10.14
Health Home 12	2,911	2,162	12	9,136	1,117	997	59.22	7.24	9.77
Health Home 14	5,140	3,276	15	9,463	1,178	1,201	49.84	6.20	9.43
Health Home 07	5,552	9,664	53	24,166	2,142	2,608	60.52	5.36	8.94
Health Home 05	628	460	5	1,802	173	169	54.36	5.22	8.78
Health Home 20	1,001	143	0	898	165	207	38.13	7.01	8.76
Health Home 25	2,057	1,064	8	2,629	318	260	42.51	5.14	8.68
Health Home 37	337	0	0	3	0	17	0.89	0.00	8.10
Health Home 29	2,948	2,841	15	9,554	705	784	64.82	4.78	7.62
Health Home 16	570	2,143	11	2,052	181	265	24.15	2.13	7.04
Health Home 08	6,333	7,765	38	24,489	2,166	1,731	64.14	5.67	6.43
Health Home 21	7,402	3,445	60	14,415	872	936	48.75	2.95	5.72
Health Home 28	871	907	8	968	137	59	30.01	4.25	5.24
Health Home 26	2,512	92	0	542	59	49	15.86	1.73	4.81
Health Home 24	2,899	60	0	1,437	185	67	25.56	3.29	4.52
Health Home 27	7,149	5,605	32	13,085	474	541	56.82	2.06	3.99
Health Home 13	858	2,373	26	2,970	98	95	40.05	1.32	2.78
Health Home 17	5,303	13,178	28	2,087	171	57	7.09	0.58	1.96
Health Home 35	1,287	0	0	0	0	0	0.00	0.00	0.00
Health Home 36	4,300	0	0	0	0	0	0.00	0.00	0.00
Totals	93,042	100,187	632	187,709	21,020	23,224	46.96	5.26	10.12

Billing Not Tracking

1/2012 - 9/2014

Members with Claims in Outreach		Members with Claims in Enrollment	
+ Health Home 01	206	+ Health Home 01	35
+ Health Home 02	28	+ Health Home 02	4
+ Health Home 03	333	+ Health Home 03	60
+ Health Home 04	1,025	+ Health Home 04	153
+ Health Home 05	522	+ Health Home 05	3
+ Health Home 06	284	+ Health Home 06	19
+ Health Home 07	640	+ Health Home 07	196
+ Health Home 08	4,063	+ Health Home 08	342
+ Health Home 09	1,264	+ Health Home 09	80
+ Health Home 10	33	+ Health Home 10	7
+ Health Home 11	76	+ Health Home 11	17
+ Health Home 12	183	+ Health Home 12	62
+ Health Home 13	1,042	+ Health Home 13	120
+ Health Home 14	2,132	+ Health Home 14	203
+ Health Home 15	372	+ Health Home 15	29
+ Health Home 16	334	+ Health Home 16	56
+ Health Home 17	594	+ Health Home 17	250
+ Health Home 18	3,311	+ Health Home 18	294
+ Health Home 19	314	+ Health Home 19	433
+ Health Home 20	12	+ Health Home 20	13
+ Health Home 21	257	+ Health Home 21	174
+ Health Home 22	755	+ Health Home 22	72
+ Health Home 23	838	+ Health Home 23	127
+ Health Home 24	153	+ Health Home 24	55
+ Health Home 25	242	+ Health Home 25	40
+ Health Home 26	242	+ Health Home 26	13
+ Health Home 27	2,375	+ Health Home 27	236
+ Health Home 28	22	+ Health Home 28	6
+ Health Home 29	1,748	+ Health Home 29	42
+ Health Home 30	145	+ Health Home 30	3
+ Health Home 31	405	+ Health Home 31	135
+ Health Home 32	2,257	+ Health Home 32	287
+ Health Home 33	231	+ Health Home 33	57
+ Health Home 34	72	+ Health Home 34	23
+ No Assignment or Tracking	21,774	+ No Assignment or Tracking	26,454
Totals	44,204	Totals	28,437