



Department
of Health

LGU/SPOA Guide

HCS Applications, Access, Roles, and Reports

APRIL 29, 2025

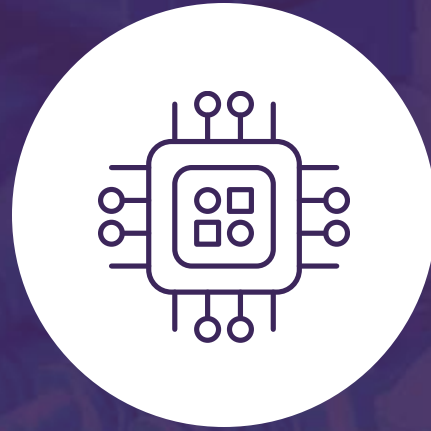
Single Point of Contact (SPOA)

- The primary role of the C-SPOA is to link and provide timely access to intensive OMH services and supports based on the identified service needs of a youth with Serious Emotional Disturbance (SED) and their families.
- C-SPOA, through the Local County Departments of Mental Health, conduct Home and Community Based Services/Level of Care (HCBS/LOC) Eligibility Determinations for youth meeting Serious Emotional Disturbance (SED) criteria.
- This applies to youth discharging from intensive services, including State Psychiatric Centers, Residential Treatment Facilities (RTF), Children's Community Residences (CCR), and Youth Assertive Community Treatment programs (ACT).
- Both the Uniform Assessment System of NY(UAS-NY) which houses the HCBS Eligibility Determination assessment, and the Medicaid Analytics Performance Portal (MAPP) Health Home Tracking System (HHTS) located within the Health Commerce System (HCS).

SPOA Guide

Topics in this guide:

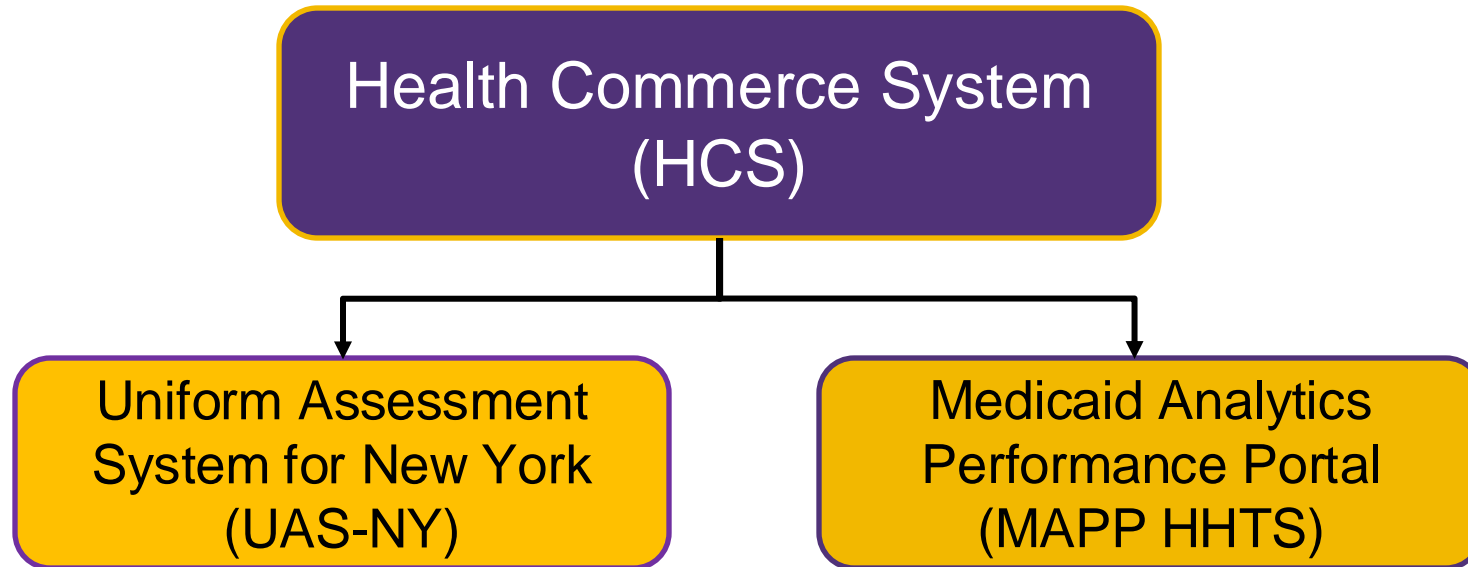
- Accessing the HCS
- Accessing the UAS-NY
 - UAS-NY Required Training and the Training Environment
 - CANS and HCBS/LOC Assessments
 - UAS-NY Roles and Permissions for LGU/SPOA
 - Helpful UAS-NY Reports
- Accessing MAPP
 - MAPP Roles
- Contact Information



Health Commerce System (HCS)


Health Commerce System (HCS)

HCS is a secure online portal that authenticates users for restricted applications.



The same HCS User Account is used for all HCS applications.

The HCS



Home My Content Search Help Center Log out

Welcome

Search

My Applications

Acronyms & Abbreviations

Comdir Search and Export Tool

Emergency Contacts

MAPP

MFA Management

Person Update Tool

ServNY

UAS-NY


UAS-NY TEST DRIVE


Refresh My Applications List


System Notices

- If you want to be informed about new features, updates or unplanned outages to Health Commerce System, click the subscribe link to be added to the HCS Communication List [Subscribe Here](#)

Important Health Events

Avian Flu

Donate Life

NYS PMP

Important Health Notifications

Posted	Priority	Keyword	Source	Audience	Description	Recipients
04/15/2025	Advisory	DAL 25-04	NYSDOH	All Users	DAL 25-04 Newborn Treatments - Eye Prophylaxis and Vitamin K	Recipients
04/11/2025	Advisory	Influenza	NYSDOH	All Users	Influenza Surveillance Report for the Week Ending 04/05/2025	Recipients
04/04/2025	Advisory	Influenza	NYSDOH	All Users	Influenza Surveillance Report for the Week Ending 03/29/2025.	Recipients
03/28/2025	Advisory	Influenza	NYSDOH	All Users	Influenza Surveillance Report for the Week Ending 03/22/2025.	Recipients

Newer

Showing notifications sent in the past 30 days.Older

Newsroom Highlights...

New Items

04/18/2025	Avian Influenza_Resources_LHD_April 2025
04/18/2025	04/12/2025 Weekly Influenza Report
04/15/2025	Medical Home April 2025

Newsletters

04/01/2025	April 2025 Aware Prepare
04/01/2025	April 2025 e-Distance Learning
04/01/2025	February 2025 e-Distance Learning

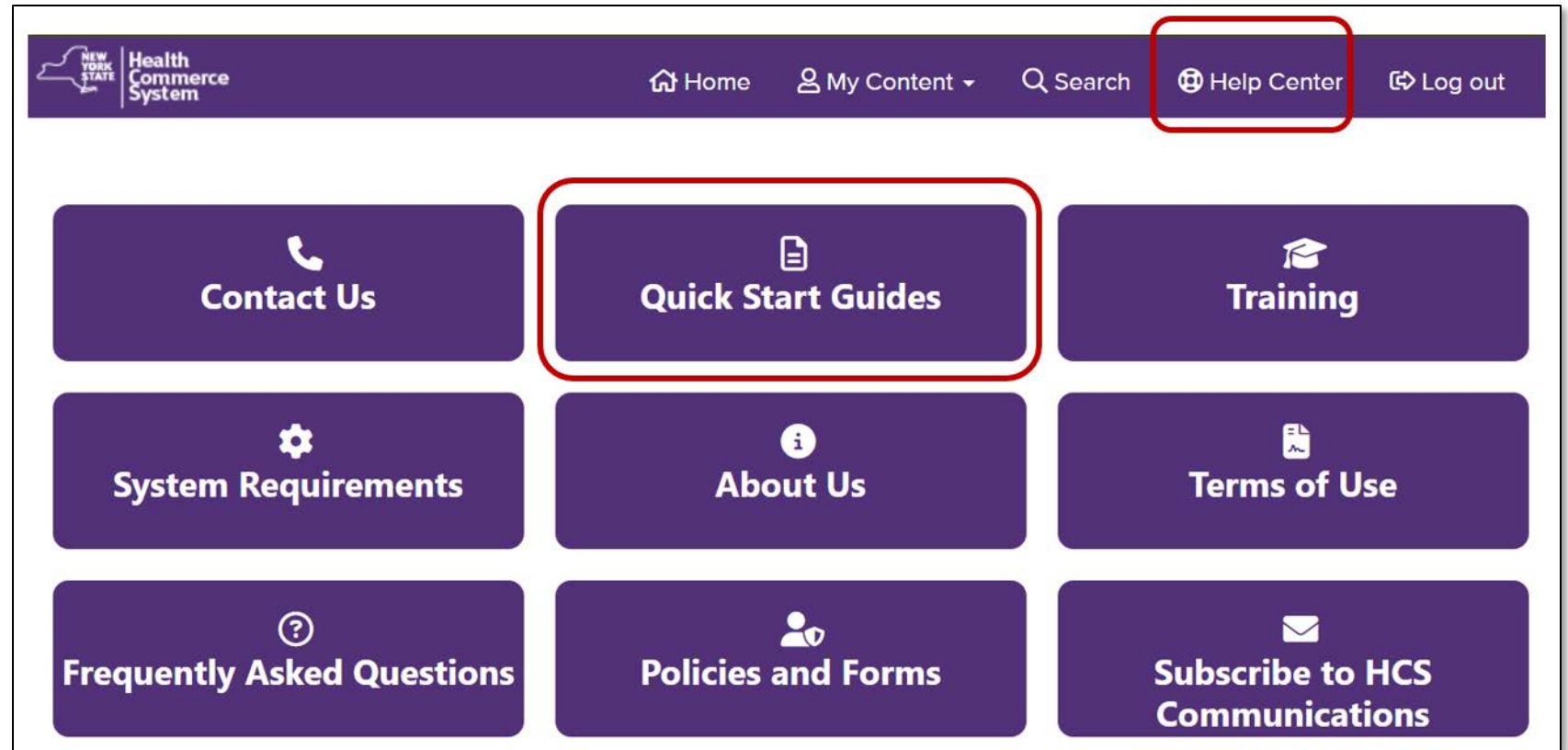
Accessing the HCS

- All users must have their own active HCS user account.
- Only one HCS account per user.
- Roles are used to identify staff, grant access to role-based applications, and to send targeted communications through the notification system (emails, phone calls and text messages) that are relative to your job function/role.
- If you do not have an HCS account, contact your agency's HCS Coordinator
- If you do not know your HCS Coordinator, please call the Commerce Accounts Management Unit (CAMU) at 1-866-529-1890.

If you need help with HCS...

From the main HCS page, you can find help by going to the Help Center in the top menu bar. In the Quick Start Guides section, you can find these topics and more:

- Account Management Guide
- Change HCS Password
- Forgot Your Password?
- Forgot Your User ID?
- Update Contact Information



Multifactor Authentication (MFA)

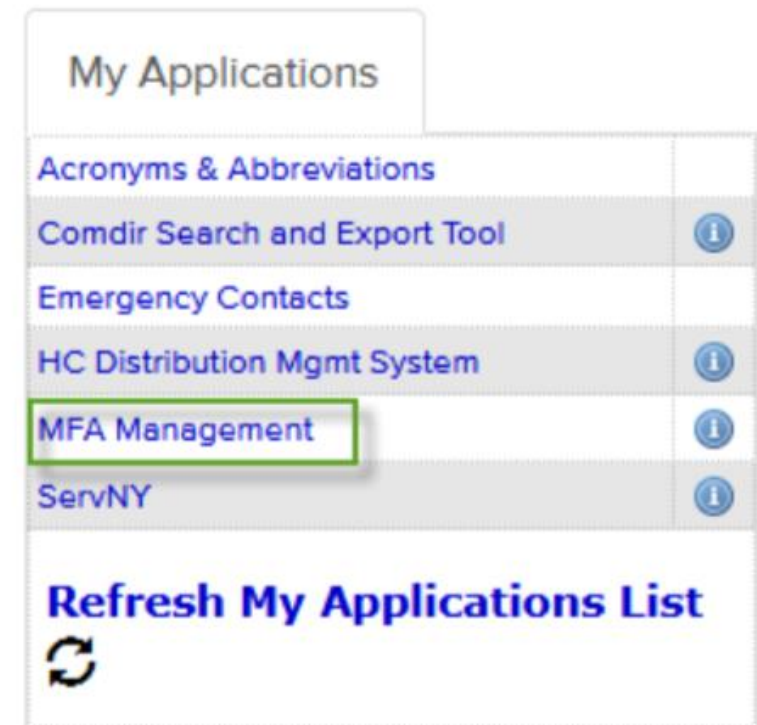
Multi-Factor Authentication (MFA) is an added layer of security that goes beyond a password to perform a second level check to verify a user's identity before they can access protected applications in the HCS.

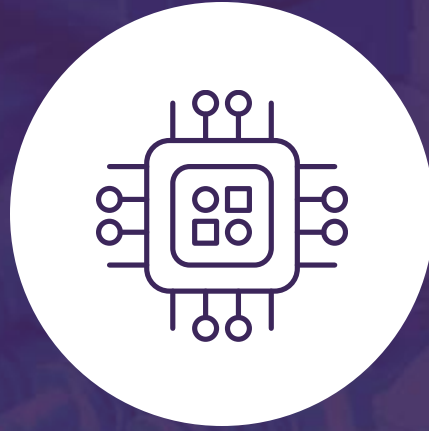
This extra layer of security protects all Personal Identifying Information (PII) and Protected Health Information (PHI) stored in the applications.

From the main HCS page, you can set up MFA by going to the My Applications menu on the left and selecting MFA Management. Choose which type of authentication you want to use:

- Security Email
- Use code from authenticator app
- RSA Token (State DOH.ITS)

Select the information icon to the right to access the Multi-factor Authentication Guide.





Uniform Assessment System of New York (UAS-NY)

Uniform Assessment System (UAS-NY)

- HCS Coordinators provision you with one UAS-NY role.
- The assigned role will determine what information you will be able to read or edit and what functions you will be able to perform in the application.
- Your one role must be appropriate to a business need, and you should be able to attest to that need to access PHI within the UAS-NY.
- Each UAS-NY user account is associated with a primary organization.
- Users may have other UAS-NY roles provisioned by other organizations, however, there is only one primary organization.
- If you find you have more than one role per organization, please contact your HCS Coordinator.

Accessing the UAS-NY

The screenshot shows the Health Commerce System (HCS) interface. The top navigation bar includes links for Home, My Content, Search, Help Center, and Log out. The main content area is divided into three sections: System Notices, Important Health Events, and Important Health Notifications. On the left, a 'My Applications' menu lists various tools, with 'UAS-NY' highlighted by a red box. Below the menu is a 'Refresh My Applications List' button. The 'System Notices' section contains a message about subscribing to the HCS Communication List. The 'Important Health Events' section features three banners: Avian Flu, Donate Life, and NYS PMP. The 'Important Health Notifications' section displays a table of recent notifications.

Posted	Priority	Keyword	Source	Audience	Description	Recipients
03/28/2025	Advisory	Influenza	NYSDOH	All Users	Influenza Surveillance Report for the Week Ending 03/22/2025.	Recipients
03/21/2025	Advisory	Infectious Disease	NYSDOH	All Users	CDC HAN on Continued Increase in Dengue Fever	Recipients
03/21/2025	Advisory	Influenza	NYSDOH	All Users	Influenza Surveillance Report for the Week Ending 03/15/2025	Recipients
03/19/2025	Advisory	25-03	NYSDOH	All Users	DHDC DAL 25-03 Patient Abandonment and Equity in Care	Recipients

Note: If you do not see the UAS-NY application listed in the My Applications menu, you have not yet been assigned a UAS-NY role.

UAS-NY Organizations/Roles Selector Page

Organizations/Roles Selector

Name: Ellie Bear

Last Login: 04/23/2025 02:08:18 PM

Organization Name	Role Name
<input checked="" type="radio"/> Z Test Health Home Care Management Agencies (CMA) (HHCMA)	CANS-NY-45

- Once you have logged into the HCS and selected UAS-NY in My Applications, you should see listed your Organization Name in the Organization /Role Selector for which your HCS Coordinator has assigned to you.
- Select your role by clicking on the radio button to the left of the role. If you see more than one role per organization, please alert your HCS ID coordinator.

UAS-NY SPOA Roles

UAS-NY Role	Description
CANS-NY-25	LGUs and C-SPOA who will not conduct assessments. Limited access to aggregate reporting for CANS-NY and HCBS/LOC.
CANS-NY-40	C-SPOA who will conduct assessments. Must have CANS-NY Certification. Can access individual reports.
CANS-NY-45	Will conduct assessments and access individual and aggregate reports.

UAS-NY Organization/Role Confirmation Page

- This page will display your role in the UAS-NY and a list of courses your role has been assigned.
- Training is added throughout the year, and you must complete the required courses to maintain access to the UAS-NY.
- Updates include system changes, new reports, features, and functionality that impact assessments and reports.

Organization/Role Confirmation

Name: Adam King

Organization: Health Services, Inc

Role Name: UAS-NY-40

BackContinue

Training Courses for role UAS-40

Refresh StatusHide Completed Courses

Required Courses

Course Name	Status
1000 - Training in the UAS-NY	Not Completed
Verification of Certification - 1	Expired: 03/14/2024
1007 - Required Reading	Required by: 03/14/2024
Verification of Certification - 2	Expires: 01/27/2025
1025 - Working With Demographic Information	Completed

Required Training Status Definitions

Not Completed: Blocks access until you complete the training, if listed a required.

Expired: Blocks access until you renew your external training certificate.

Required by: allows access to the UAS-NY until the due date. On the due date, the status changes to Not Completed and blocks access, if training is not completed.

Expires: indicates that you successfully completed training requirements. This status displays the certification expiration date and allows access to the UAS-NY until the expiration date.

Completed: indicates that you successfully completed the course requirements. This status allows access to the UAS-NY.

Course Name	Status
1000 - Training in the UAS-NY	Not Completed
Verification of Certification - 1	Expired: 03/14/2024
1007 - Required Reading	Required by: 03/14/2024
Verification of Certification - 2	Expires: 01/27/2025
1025 - Working With Demographic Information	Completed

Recommended Training Status Definitions

Reference Only: identifies the course as a document library of policies, procedures, manuals, and other job aids.

Not Completed: indicates that you have not yet completed the training.

Completed: indicates that you have successfully completed the course requirements.

Course Name	Status
8000 - Shared Resources and Policy	Reference Only
2320 - Using Individual Reports	Not Completed
2010 - Supervisory Roles in the UAS-NY	Completed

CANS-NY Certification

- CANS-NY Assessors must complete a course sequence through TCOM.
- Upon completion, you are considered CANS-NY certified for one year.
- CANS-NY Certification information is transmitted from TCOM to the UAS-NY application daily.
- For CANS-NY Certification issues with linking your completed certification to the UAS-NY and/or certification training questions, please contact the CANS-NY Institute at help@cansnyinstitute.org.


Accessing the UAS-NY Training Environment

- The UAS-NY Training Environment includes online, self-paced courses.
- Selecting a course will open the course in the UAS-NY Training Environment.



Course Name	Status
1000 - Training in the UAS-NY	Not Completed
Verification of Certification - 1	Expired: 03/14/2024
1007 - Required Reading	Required by: 03/14/2024
Verification of Certification - 2	Expires: 01/27/2025
1025 - Working With Demographic Information	Completed

UAS-NY Training Environment

[Home](#) [My courses](#) [Return to UAS-NY](#)

✕

▼ Getting Started

Activity 1.1: Overview and L...

▼ Reference Guides

Activity 2.1: Navigating the ...

Activity 2.2: Reading Activiti...

Activity 2.3: Multimedia Acti...

Activity 2.4: Test Your Knowl...

Activity 2.5: Complete the C...


Activity 2.6: Page Activity Ex...

Activity 2.7: Assignment Act...



▼ Multimedia Activities

Activity 3.1: Using the Artic...


▼ Getting Started



The UAS-NY Training Environment

 Uniform Assessment System for New York 

Instructions: To get started click the **Activity 1.1** link below to view the overview and learning objectives for this course. You cannot access the course quiz unless this activity is completed. This activity should take about 2 minutes to complete.

 Activity 1.1: Overview and Learning Objectives [View](#)

Collapse all

UAS-NY Training Course Overview

- These are common elements you may find in a training course:
 - Objectives
 - Reference guides
 - Multimedia
 - Policies, forms, and reference documents
 - Confirmation that you have reviewed all relevant materials.
- If there is an issue with access or coursework, contact the UAS-NY Help Desk at uasny@health.ny.gov, or call 518-408-1021 (option 1).

UAS-NY Organization/Role Confirmation Page

If all required coursework is complete, click **Continue** to access the UAS-NY.

Organization/Role Confirmation

Name: Adam King
Organization: Health Services, Inc
Role Name: UAS-NY-40

[Back](#) [Continue](#)

Training Courses for role UAS-40

[Refresh Status](#) [Hide Completed Courses](#)

Required Courses

Course Name	Status
1000 - Training in the UAS-NY	Completed
1007 - Required Reading	Required by: 03/14/2024
Verification of Certification - 2	Expires: 01/27/2025
1025 - Working With Demographic Information	Completed

UAS-NY Landing Page

UAS-NY

lyc123, CANS-NY-40
APICHA (HHCMA)

[Search](#)[Reports](#)[Tools](#)[Help](#)[Logout](#)

SEARCH CASE LIST

Search by:

Last Name

Search Value:

Anderson

Search by:

Medicaid ID

Search Value:

Search Filter:

Open

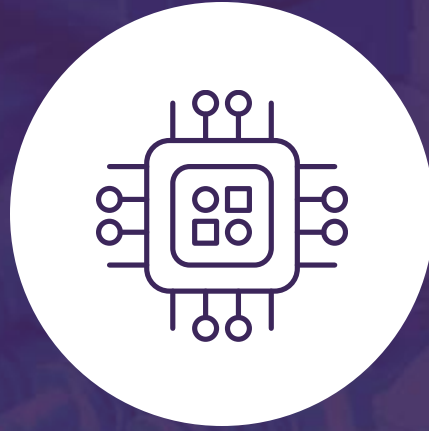
Clear

Search

Sort First:Last NameAscSort Second:First Name and MIAscSort

Last Name	First Name and MI	Medicaid ID	Last 4 SSN	Date of Birth	PID	TABS ID	City	County	Last Assmt Date
-----------	-------------------	-------------	------------	---------------	-----	---------	------	--------	-----------------

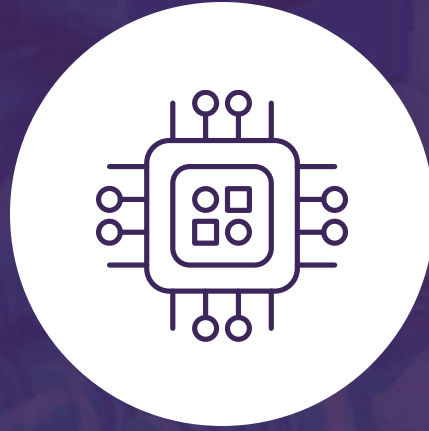
From this page, you begin searching for the child/youth to review or conduct an assessment.



Child and Adolescent Needs- New York (CANS-NY)

Child and Adolescent Needs-NY (CANS-NY)

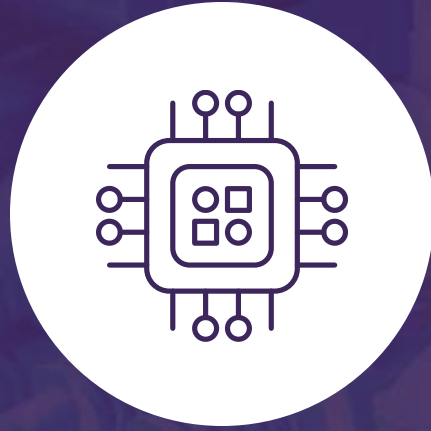
- The CANS-NY serves as a guide in decision making for Health Homes Serving Children.
- It guides service planning specifically for children and adolescents under the age of 21 with behavioral needs, medical needs, developmental disabilities, and juvenile justice involvement.
- Data from the CANS-NY assessments is included in many UAS-NY reports.
- For CANS-NY policy-related questions, you can email the Health Home Serving Children program office at healthhomes@health.ny.gov.



Home and Community Based Services (HCBS)

Home and Community Based Services (HCBS)

- HCBS are designed to offer support and services to children/youth in noninstitutionalized settings that enable them to remain at home and in the community or for children/youth being discharged from an institutional setting who require these services to safely return to their home and community.
- HCBS provides a family-driven, youth-guided, culturally and linguistically appropriate system of care that accounts for the strengths, preferences, and needs of the individual, as well as the desired outcome.
- Services are individualized to meet the physical health, developmental, and behavioral health needs of each child/youth.
- Participants have independent choice among an array of service options and providers once found HCBS eligible.



**What can your role do in the
UAS-NY?**

Role Permissions in the UAS-NY

Access to Client Data	CANS-NY-25	CANS-NY-40	CANS-NY-45
Edit or view a person's demographic information.	-	Edit	Edit
Edit or view provider records in the Provider Node.	-	Edit	Edit
Search Organization Case List using one field of data (e.g. last name).	-	-	✓
Conduct search of the Statewide Database.	-	✓	✓
Attest on behalf of your organization to access case file and add to Org Case List.	-	✓	✓
Can view attestation information for your organization.	-	✓	✓
Remove a case file from your Organization Case List.	-	✓	✓
Create a new case file record for a person not found in the Statewide Search.	-	✓	✓
Withdraw Authorization (Withdraws consent auth for ALL orgs and service domains.)	-	-	✓

Role Permissions in the UAS-NY

Conducting Assessments Online	CANS-NY-25	CANS-NY-40	CANS-NY-45
Initiate an HCBS/LOC Eligibility Determination assessment or reassessment.	-	✓	✓
Edit or view assessment information.	-	Edit	Edit
Conducting Assessments Offline			
Use the UAS-NY Offline Application.	-	✓	✓
Resolve or view assessment information.	-	Edit	Edit

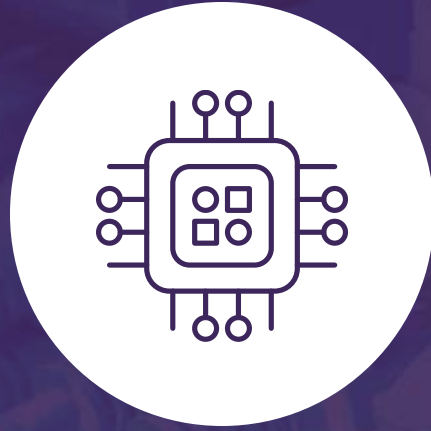
Role Permissions in the UAS-NY

Sign/Finalizing Assessments	CANS-NY-25	CANS-NY-40	CANS-NY-45
Sign as a reviewed or consulting participant on an assessment.	-	-	✓
Delete an unfinalized assessment that the user has created.	-	✓	✓
Delete any unfinalized assessment in your Organization Case List.	-	-	✓
Add and modify Fair Hearing/State Review Request.	-	-	✓
Edit or view HCBS override data (Fair Hearing/State Review).	-	View	View
Edit or view HCBS Eligibility Extension data.	-	View	View

Report Access in the UAS-NY

Reports	CANS-NY-25	CANS-NY-40	CANS-NY-45
Aggregate	Limited	-	All
Individual	-	All	All

- UAS-NY access to reports is set up based on business need and is limited specifically by the need to access a child/youth's PHI/PII.
- The CANS-NY-25 role is limited to only some aggregate reports that are summary, but not aggregate reports that contain PHI/PII. This role has the most limited access to reports.
- The CANS-NY-40 role works directly with the PHI/PII while conducting assessments, and that role has access to Individual Reports.
- The CANS-NY-45 role has business need for both the Individual Reports and the Aggregate Reports. The CANS-NY-45 role is the most versatile.
- Each SPOA should have one role per organization that meets all their business needs. If you have questions regarding your assigned role, please contact your HCS ID Coordinator.



**What reports can you access
in the UAS-NY?**

Access to Aggregate Reports in the UAS-NY

Aggregate Reports	Description	CANS-NY-25	CANS-NY-40	CANS-NY-45
CANS-NY Assessment Outcomes	Outcomes for signed/finalized assessments including care coordination level of support, count, and percent.	✓	-	✓
CANS-NY Assessments Not Finalized	List of assessments that are not signed/finalized.	✓	-	✓
CANS-NY Finalized Assessments	List of assessments that are signed/finalized.	✓	-	✓
HCBS Eligibility Determination Summary Report	HCBS/LOC eligibility statistics for all signed/finalized assessments for county planning.	✓	-	✓
CANS-NY and HCBS Report	Data from both assessments.	-	-	✓
CANS-NY Sync History	List of assessors for an organization who have active offline case files from a specific date.	-	-	✓
Deactivated Assessments Report	List of all deactivated CANS-NY and HCBS/LOC assessments.	-	-	✓
High Fidelity Wraparound Eligibility	Lists the HFW screening outcome of all signed/finalized CANS-NY 6-21 assessments.	-	-	✓
Organization Case List Report	List of all consumers that the organization has an active attestation and consent for.	-	-	✓

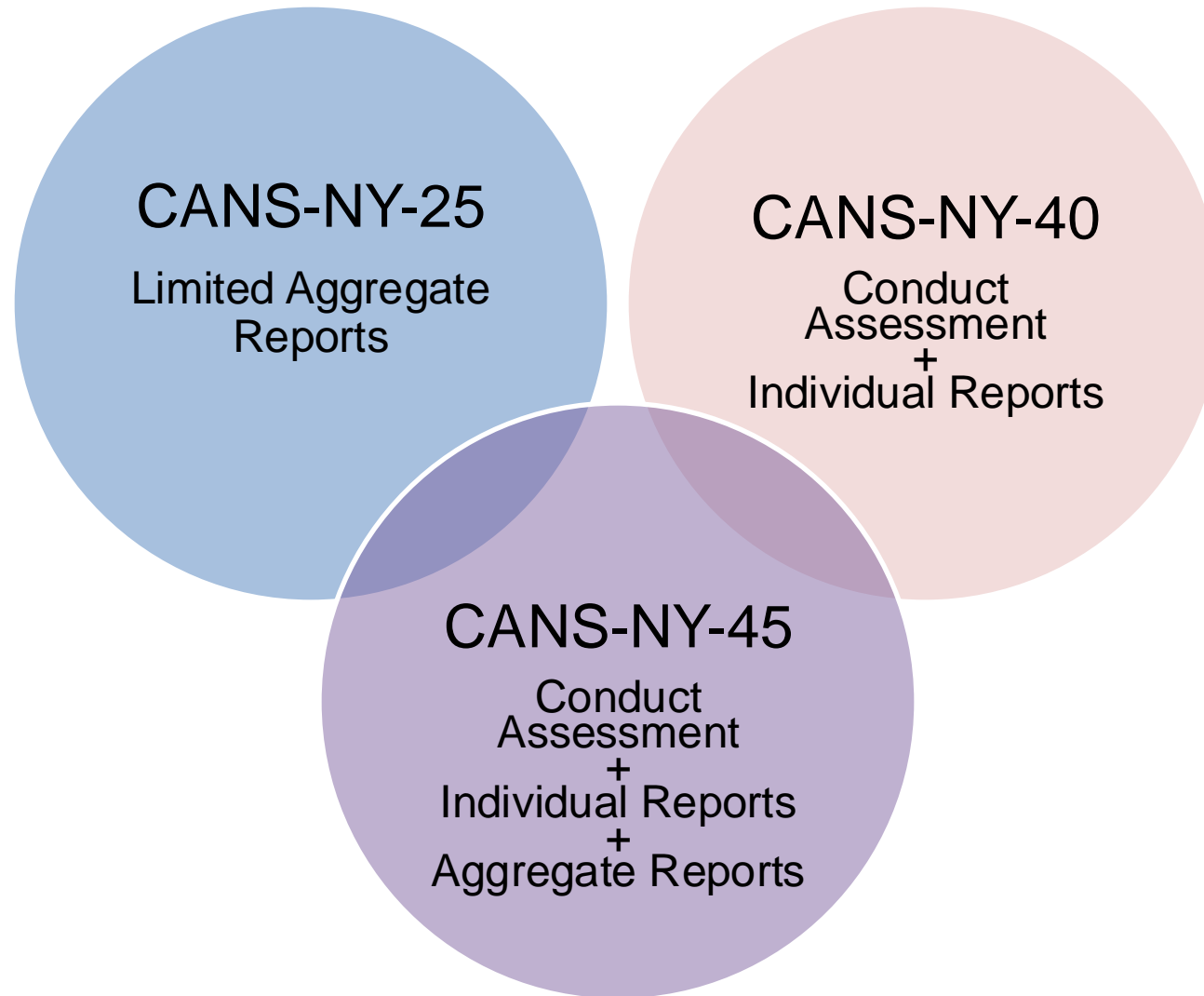
Access to Individual Reports in the UAS-NY

Individual Reports	Description	CANS-NY-25	CANS-NY-40	CANS-NY-45
Assessment Results	Lists standard section and triggered modules data items for the specific assessment.	-	✓	✓
Complete Assessment	Lists all data items from a specific assessment.	-	✓	✓
Strengths and Needs	Data presented to share with child/family and develop a plan of care and traceability from needs to selected services. Groups into Useful Strengths, Strengths to Build, and Priority Needs.	-	✓	✓
Assessment Administration	Report for OPWDD of data from the Assessment Administration node.	-	✓	✓
HCBS Results	Single page determination results from Sign/Finalize, Assessment Outcomes, and Fair Hearing/State Review sections.	-	✓	✓
HCBS Complete	Lists data from all sections of HCBS/LOC Eligibility Assessment including previous and new target population data.	-	✓	✓

Recent SPOA UAS-NY Role Changes

- Previously, SPOA with the CANS-NY-25 role had access to aggregate report data for the county. This was used for LGU planning.
- Now a SPOA with a CANS-NY-40 or CANS-NY-45 role can conduct an HCBS eligibility determination. They now have access to individual reports that provide information on a particular child/youth to assist with SPOA responsibilities for HCBS and HFW screening.
- CANS-NY-45 roles have the access to aggregate reports like the CANS-NY-25 role, but ALSO have ability to conduct an assessment and access that individual's reports.
- Remember, one user should only have one role per organization. An HCS Coordinator identifies exactly what permissions you need and assigns you the one role that gives you those permissions.
- C-SPOA are now doing HCBS eligibility determination for youth ages 10 to 21 that have Medicaid but are not currently connected to a Health Home, and who are at risk of entering, or returning home from high intensity services, such as inpatient settings or residential services.

SPOA Roles Overlaps



HCBS Results Report

- **Name:** HCBS Results Report
- **Which role(s) can access it:** CANS-NY-40 and CANS-NY-45
- **What does it show?** A summary of outcomes for:
 - HCBS Eligibility
 - Serious Emotional Disturbance (SED)
 - Medically Fragile
 - Developmental Disability & Foster Care
 - Developmental Disability & Medically Fragile

Uniform Assessment System - New York HCBS/LOC 6 - 21 Results Report	
Anderson, Andy	Date of Birth: 05/26/2017 Medicaid ID: MM13579A
Assessment Date: 01/22/2024 Finalized Date: 01/22/2024	Assessment Reason: Reassessment
Section Sign/Finalize	
Finalized by: Test Madison	
I certify that this assessment is, to the best of my ability, accurate and complete. I understand that, after I click [Sign/Finalize] button, the assessment will be locked from any further editing.	
Finalized Date:	01/22/2024
Finalized by User ID:	mya28
Finalized by Organization Name:	APICHA (HHCMA)
Comments:	
Section Outcomes	
Summary	
HCBS Eligibility:	No, not eligible
Serious Emotional Disturbance:	No
Medically Fragile:	Not selected
Developmental Disability & Foster Care:	Not selected
Developmental Disability & Medically Fragile:	Not selected
Outcomes Finalization	
Finalized Date:	01/22/2024
Finalized by User ID:	mya28
Note: HCBS eligibility begins when Outcomes are finalized. If Outcomes Finalization data is missing, HCBS eligibility has not begun.	

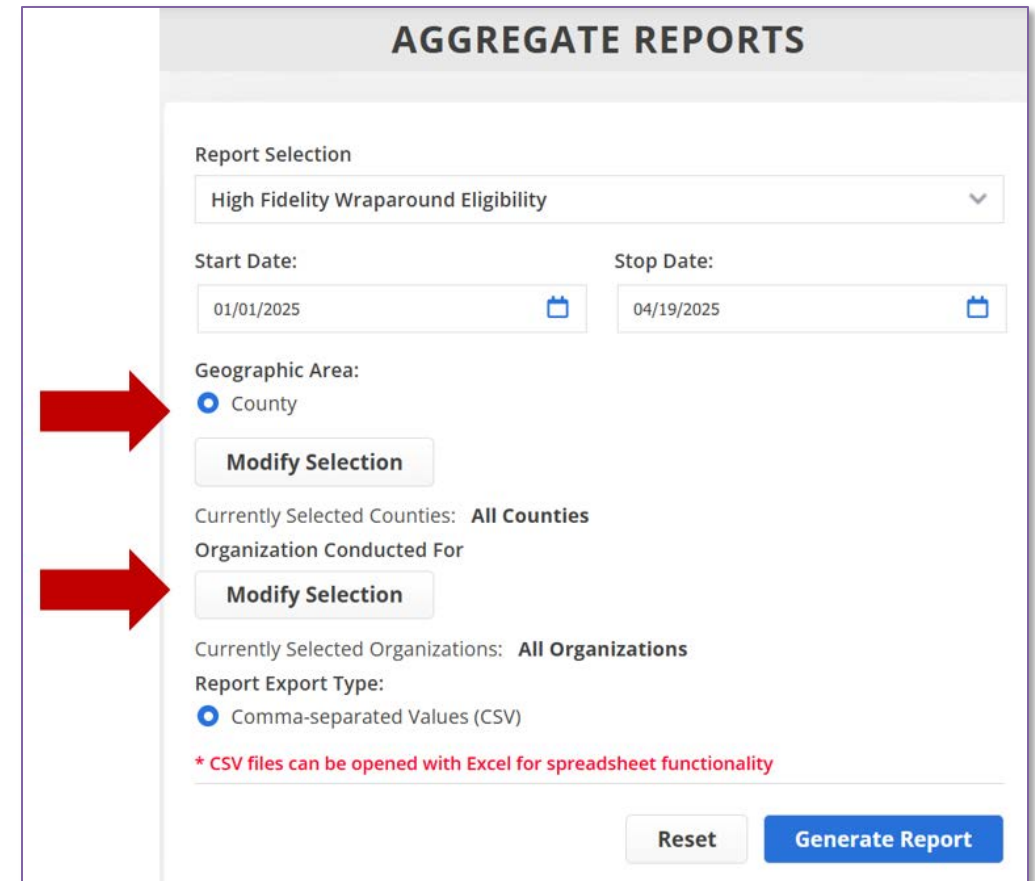
HCBS Complete Report

- **Name:** HCBS Complete Report
- **Which role(s) can access it:** CANS-NY-40 and CANS-NY-45
- **What does it show?** It has the same summary of outcomes but also includes detailed information about:
 - Intake/Demographics
 - Serious Emotional Disturbance
 - Target Population
 - Primary Diagnosis
 - Risk Factors

Uniform Assessment System - New York HCBS/LOC 6 - 21 Complete Report	
Anderson, Andy	Date of Birth: 05/26/2017 Medicaid ID: MM13579A
Assessment Date: 01/22/2024	Assessment Reason: Reassessment
Finalized Date: 01/22/2024	
Section Reference Date	
Assessment Reference Date	01/22/2024
Organization which conducted this assessment	APICHA (HHCMA)
Section Intake/Demographics	
Residential Setting at Time of Assessment: Select the one that represents the child's living arrangement at the time of the current assessment. The person's living arrangement may be long-standing or temporary.	Private housing (house/apartment/rented room)
Child Lives With:	
Does the child/youth live on their own with no others?	No
Does youth live with his/her own child(ren)?	
Does youth live with his/her own child(ren)?	No
How many adults live in the same household as this child?	
How many adults live in the same household as this child? Enter NA when this information is not known or is not available.	1
How many other children live in the same household as this child?	
How many other children live in the same household as this child? Enter NA when this information is not known or is not available.	0
County of Responsibility:	Albany
Has there been residential instability over the LAST 2 YEARS? e.g. evicted from the home, homeless, 3 or more moves, no permanent address, living in a shelter:	No
Enrolled in School:	Yes
Highest level of education completed:	Second grade
Special Education Services	
Does the child/youth's school provide accommodations and/or services for the child's special needs?	No
Is an Individualized Education Program (IEP) in effect?	No
Is a 504 Plan in effect?	No
Employment status	
Employment — refers to paid work, either part-time or full-time.	Not applicable
Currently under PINS, Probation, or Parole Supervision?	No

High Fidelity Wraparound Eligibility Report


- **Name:** High Fidelity Wraparound (*Arriving in UAS-NY with Release 1.20*)
- **Which role(s) can access it:** CANS-NY-45
- **What does it show?** This is a report that contains all the finalized CANS-NY 6-21 in which the HFW node was activated.
- A SPOA can filter this report by county and by organization to review only their caseload.
- This report will show the HCBS eligibility determination and target population of the most recent signed/finalized HCBS/LOC Eligibility assessment that is within 1 year of the CANS-NY 6-21 assessment. If a child/youth has had more than one CANS-NY 6-21 assessment in the reporting period with the HFW activated, the same HCBS/LOC data may show for each CANS-NY 6-21 assessment.



The screenshot displays the 'AGGREGATE REPORTS' interface. It features a 'Report Selection' dropdown menu set to 'High Fidelity Wraparound Eligibility'. Below this are 'Start Date' and 'Stop Date' fields with calendar icons, showing dates 01/01/2025 and 04/19/2025 respectively. The 'Geographic Area' section has a radio button selected for 'County', with a 'Modify Selection' button below it. The 'Currently Selected Counties' is listed as 'All Counties'. The 'Organization Conducted For' section has a 'Modify Selection' button. The 'Currently Selected Organizations' is listed as 'All Organizations'. The 'Report Export Type' section has a radio button selected for 'Comma-separated Values (CSV)'. A red asterisk note states '* CSV files can be opened with Excel for spreadsheet functionality'. At the bottom right are 'Reset' and 'Generate Report' buttons. Two red arrows point to the 'Geographic Area' and 'Organization Conducted For' sections.

CANS-NY Assessment Outcomes Summary Report

- **Name:** CANS-NY Assessment Outcomes Summary Report
- **Which role(s) can access it:** CANS-NY-25 and CANS-NY-45
- **What does it show?** This is a report of counts and percent of CANS-NY assessments for:
 - Care Coordination Level of Support
 - High Fidelity Wraparound Eligibility
- LGU/SPOA can find the number of assessments that resulted in High Fidelity Wraparound eligibility, and how many individuals are eligible and already participating.

Uniform Assessment System - New York CANS-NY Assessment Outcomes Summary Report			
Reporting Period: 04/01/2024 - 04/01/2025 Geographic Area: All Counties Organization Conducted For: All Organizations Organization Created By: APICHA (HHCMA) Assessment Reason: All Assessment Reasons Organization Submitting report: APICHA (HHCMA)			
2.0 CANS-NY 6-21 Assessments			
<u>Care Coordination Level of Support</u>		<u>Count</u>	<u>Percent</u>
Complex		7	63.6 %
Intensive		0	0.0 %
Standard		4	36.4 %
			
<u>High Fidelity Wraparound Eligibility</u>		<u>Count</u>	<u>Percent</u>
Already Participating		1	20.0 %
Yes		3	60.0 %
No		0	0.0 %
Not Applicable*		1	20.0 %
*If certain criteria is not met, High Fidelity Wraparound Eligibility will not be determined.			
2.0 CANS-NY 0-5 Assessments			
<u>Care Coordination Level of Support</u>		<u>Count</u>	<u>Percent</u>
Complex		1	50.0 %
Early Development		1	50.0 %
Low		0	0.0 %

HCBS Eligibility Determination Summary Report

- **Name:** HCBS Eligibility Determination Summary Report (*Arriving in UAS-NY with Release 1.20*)
- **Which role(s) can access it:** CANS-NY-25 and CANS-NY-45
- **What does it show?** The HCBS eligibility statistics for all signed/finalized HCBS assessments, separated into a 0-5 section and a 6-21 section.
- Organizations can track the HCBS eligibility determination of their population and use data for county planning.
- For each Target Population it shows Eligibility, Count, and %.

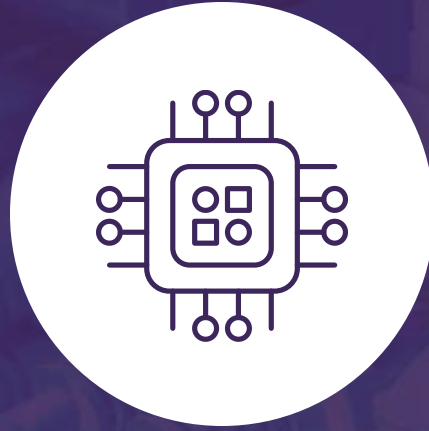
Uniform Assessment System - New York HCBS Eligibility Determination Summary Report			
Reporting Period: 03/01/2025 through 06/01/2025 Geographic Area: All Counties Organization Created By: All Organizations Assessment Reason: All Assessment Reasons Organization Submitting report: Swithins County Department of Social Services			
HCBS Eligibility Determinations 0-5			
Target Population	Eligibility	Count	Percentage
Serious Emotional Disturbance	Yes, eligible	1	25.0%
	No, not eligible	0	0.0%
Medically Fragile	Yes, eligible	0	0.0%
	No, not eligible	0	0.0%
Developmental Disability & Foster Care	Yes, eligible	1	25.0%
	No, not eligible	0	0.0%
Developmental Disability & Medically Fragile	Yes, eligible	0	0.0%
	No, not eligible	2	50.0%
HCBS Eligibility Determinations 6-21			
Target Population	Eligibility	Count	Percentage
Serious Emotional Disturbance	Yes, eligible	1	33.3%
	No, not eligible	1	33.3%
Medically Fragile	Yes, eligible	0	0.0%
	No, not eligible	0	0.0%
Developmental Disability & Foster Care	Yes, eligible	1	33.3%
	No, not eligible	0	0.0%
Developmental Disability & Medically Fragile	Yes, eligible	0	0.0%
	No, not eligible	0	0.0%

CANS-NY and HCBS Report

- **Name:** CANS-NY and HCBS Report
- **Which role(s) can access it:** CANS-NY-45
- **What does it show?** This is a state-wide report of all the CANS and HCBS conducted within a user-selected date range.
- Contains columns including:
 - Assessment Type
 - Assessment Reason
 - Health Home Name
 - Level of Support
 - HFW Eligibility
 - Selected Population
- It contains assessments that are signed/finalized, and those that are not.
- Once downloaded as an Excel file, it can be filtered by county and by organization.

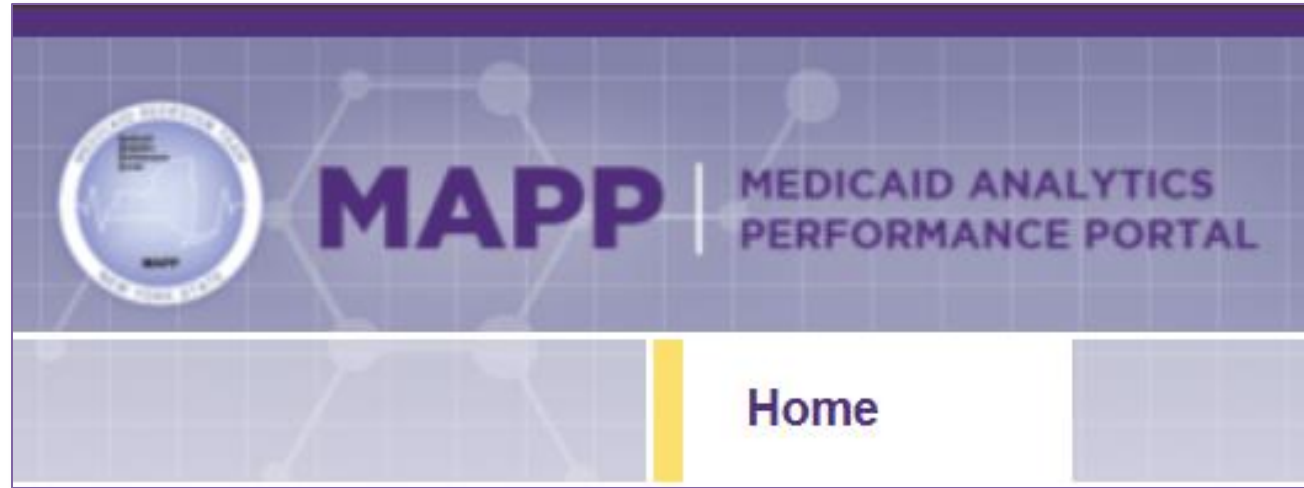
Asmt Type	Asmt Reason	Health Home Name
HCBS/LOC Eligibility 0-5	Initial	
CANS-NY Assessment 6-21	Initial	Adirondack Health Institute (AHI) (03449974)
CANS-NY Assessment 6-21	Initial	No Health Home enrollment for this child (99999999)
CANS-NY Assessment 6-21	Reassessment	No Health Home enrollment for this child (99999999)
CANS-NY Assessment 6-21	Initial	St. Mary's Healthcare (03001310)
CANS-NY Assessment 6-21	Initial	Adirondack Health Institute (AHI) (03449974)
CANS-NY Assessment 6-21	Reassessment	No Health Home enrollment for this child (99999999)
HCBS/LOC Eligibility 6-21	Significant Life Event	

Level of Support	HFW Eligibility	Outcomes Finalized Date	Selected Population
		6/11/2024 18:21	Serious Emotional Disturbance
Complex	Yes, eligible		
Standard			
Standard			
Complex			
Complex	Yes, eligible		
Complex			



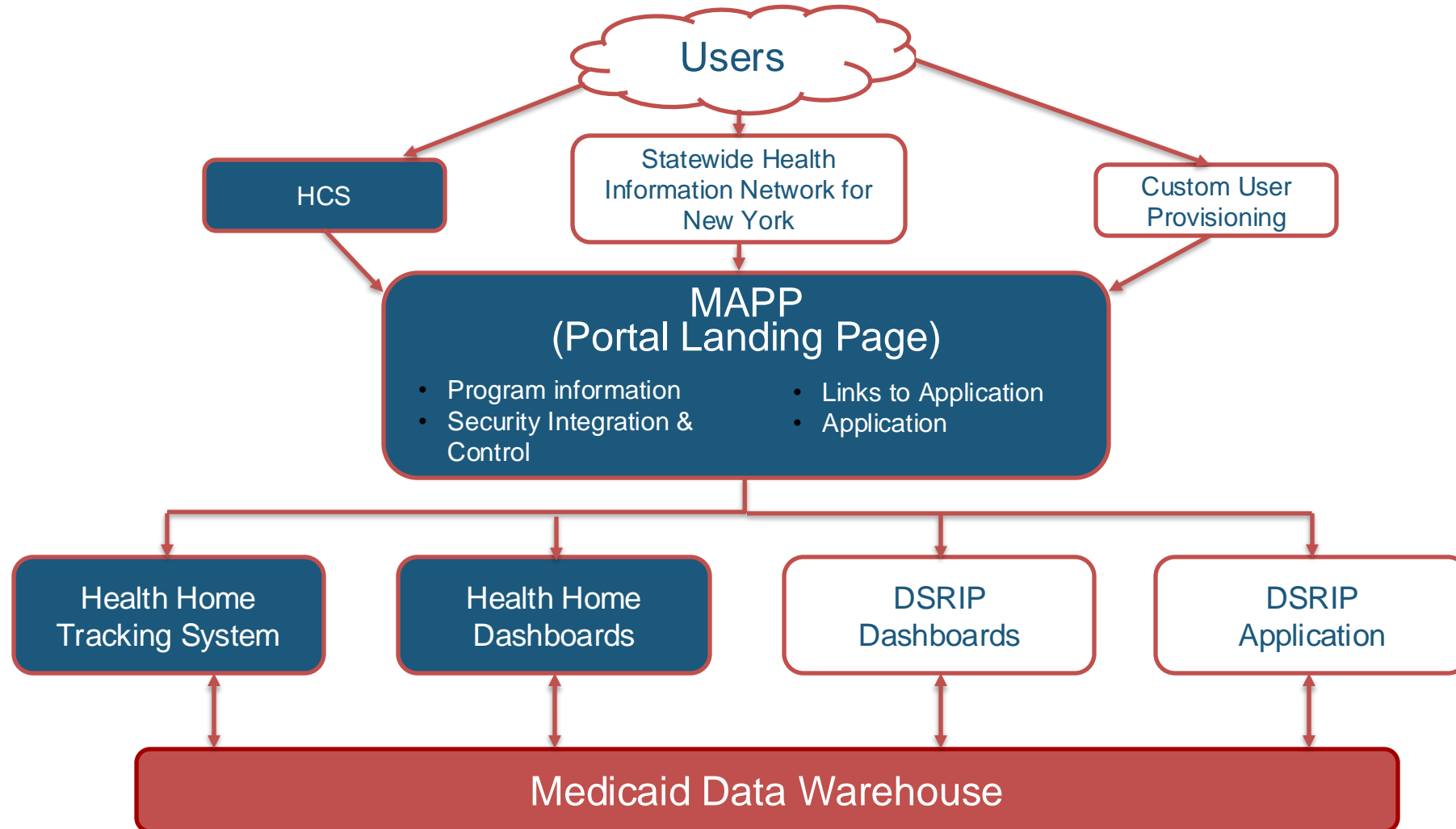
Medicaid Analytics Performance Portal (MAPPP)

Medicaid Analytics Performance Portal (MAPP)



- Medicaid Analytics Performance Portal (MAPP) is an application located within the Health Commerce System (HCS).
- MAPP users must have HCS account.
- The Health Home Tracking System (HHTS) and the Delivery System Reform Incentive Payment (DSRIP) program are housed within MAPP.
- The portal contains data management and analytics.

Medicaid Analytics Performance Portal (MAPP)



Accessing MAPP in HCS

Home

My Content

Search

Help Center

Log out

Welcome

Search

My Applications

Acronyms & Abbreviations

Comdir Search and Export Tool

Emergency Contacts

MAPP

MFA Management

Person Update Tool

ServNY

UAS-NY

UAS-NY TEST DRIVE

Refresh My Applications List

System Notices

If you want to be informed about new features, updates or unplanned outages to Health Commerce System, click the subscribe link to be added to the HCS Communication List [Subscribe Here](#)

Important Health Events

Avian Flu

Donate Life

NYS PMP

Important Health Notifications

Posted	Priority	Keyword	Source	Audience	Description	Recipients
04/15/2025	Advisory	DAL 25-04	NYSDOH	All Users	DAL 25-04 Newborn Treatments - Eye Prophylaxis and Vitamin K	Recipients
04/11/2025	Advisory	Influenza	NYSDOH	All Users	Influenza Surveillance Report for the Week Ending 04/05/2025	Recipients
04/04/2025	Advisory	Influenza	NYSDOH	All Users	Influenza Surveillance Report for the Week Ending 03/29/2025.	Recipients

DEPARTMENT OF HEALTH 47

MAPP Roles for LGU/SPOA

MAPP Role	Description
Gatekeeper	Local administrator (sometimes referred to as admin) that can add/remove MAPP HHTS users and update contact information.
Referrer	C-SPOA that can access the Children's Referral Portal and create a referral assignment for a member. Search Members by CIN for assignment, outreach, or enrollment status.

- All LGU SPOAs have access to MAPP HHTS at an organization level (Organization type "County LGU-SPOA") for referrals and CIN Search.
- Each organization must have at least one Gatekeeper and one Referrer.
- Each LDSS/LGU/SPOA must identify which staff require access to the MAPP HHTS to perform their responsibilities. Not all staff will require access.

Health Home Tracking System (HHTS)

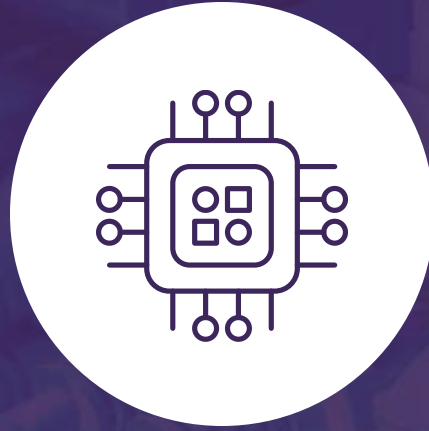
- Health Home Tracking System (HHTS) is within MAPP and is a performance management system that provides tools to the Health Home network to support providing care management for the Health Home population.
- Provides online interface to the Manage Care Plans (MCP), Health Homes (HH), and Care Management agencies (CMA) to collaborate in real-time and track a member's status.
- Users are able to:
 - Refer members to Health Homes.
 - Upload/download member information and transactions.
 - Coordinate across MCPs, HHs, and CMAs using workflows & notifications.
 - View member's Medicaid information.

Health Home Tracking System – LGU/SPOA

The role of “LDSS/LGU/SPOA Referrer” permits LGU/SPOA staff to:

- Search for CIN
- Make referrals for HH Care Management services for children they work with (e.g. foster care).
- Make referrals for community providers who are working with children who are HH eligible but do not have access to the HH Tracking System Referral Portal.





Contact Information

Contact Information

- If you need to find your HCS Coordinator or are a Coordinator and have questions about the Health Commerce System, call the Commerce Accounts Management Unit (CAMU) at 1-866-529-1890.
- For UAS-NY training, functionality, help finding a case file, merging duplicate case files, and offline application issues, contact UAS-NY at uasny@health.ny.gov or by calling our support desk during regular business hours at 518-408-1021, choose option 1.
- For CANS-NY certification/recertification registration, completing requirements/pre-requisites, live training, TCOM courses, Schoox issues, and linking certifications to the UAS-NY, contact the CANS Institute/TCOM at help@cansnyinstitute.org or support@tcomtraining.com.
- For CANS-NY and HCBS Policy related questions you can email the Health Home Serving Children program office at healthhomes@health.ny.gov.
- For Medicaid Analytics Performance Portal issues related to enrollment segment, Medicaid CIN, MAPP training, and third-party software updates, contact MAPP at 518-649-4335 or at Map-CustomerCareCenter@cma.com.



**Department
of Health**