



# **DSRIP Population Health Assessment:** *Transforming the Health Care System*

PART 2

OFFICE OF HEALTH INSURANCE PROGRAMS

AUGUST 2014



**We recommend reviewing  
Part I of this series:**

---

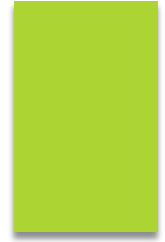
***DSRIP Population Health Projects:*  
Introduction to Population Health and Community  
Needs Assessment**

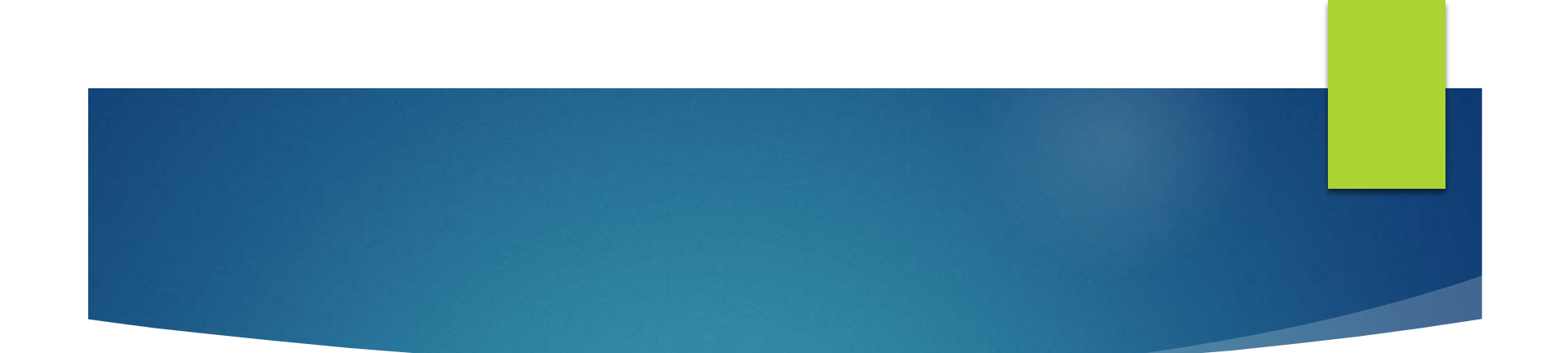
[http://www.health.ny.gov/health\\_care/medicaid/redesign/docs/dsrp\\_community\\_needs\\_assessment\\_webinar\\_slides.pdf](http://www.health.ny.gov/health_care/medicaid/redesign/docs/dsrp_community_needs_assessment_webinar_slides.pdf)

**June 2014**

Office of Public Health  
NYS Department of Health

**Why is this  
community needs  
assessment  
different from all  
other community  
needs  
assessments?**



- 
- ▶ The goal of DSRIP is not to identify issues to be addressed within the context of the current health system.
  - ▶ The goal of DSRIP is to transform the health care system by developing primary, preventive and other community based care for Medicaid members to the level of efficiency that it results in a 25% reduction in avoidable hospital use (ED and hospital beds).
  - ▶ This is not business as usual!

# This Community Needs Assessment Is Different

- ▶ While the recently completed hospital community needs assessments will likely have valuable information, they are not sufficient for this project.
- ▶ To achieve the goals of DSRIP, the solutions will be systems-based and not hospital-based.
- ▶ Health related resources, like community-based organization, will need to be assessed and included in planning to achieve goals.
- ▶ The findings of the DSRIP Community Needs Assessment (CNA) will drive the project selection process:
  - ✓ ***The CNA should not be used to justify preselected projects the PPS wants to do or feels comfortable doing!***

# To transform a system, one needs to know the system ...

## STEP 1a: Understanding the Current System

The first step in the DSRIP Community Needs Assessment (CNA) is to identify the health and community resources that are available within the defined service area of the Performing Provider System (PPS).

- ▶ **Health Care:** This includes all of the medical and behavioral health providers within that system, even if not associated with the PPS at that time. Local Departments of Public Health, OASAS and OMH clinics should be included.
- ▶ **Community Resources:** This would include but not be limited to housing, food resources, advocates, peer organizations, etc. The CNA should consider unique resources such as community access computers in libraries.

For more information, please see the community needs assessment guide available on the DSRIP website:

[http://www.health.ny.gov/health\\_care/medicaid/redesign/docs/community\\_needs\\_assessment\\_guidance.pdf](http://www.health.ny.gov/health_care/medicaid/redesign/docs/community_needs_assessment_guidance.pdf)

# To transform a system, one needs to know the system ...

## STEP 1b: Understanding how the services come together

- ▶ How are these services currently connected and how could they be connected for ideal and efficient function? This includes an accounting of current services and actuarial analysis of specific future need. Actual realistic numbers will be expected in the CNA.
  - *What is the flow of services?*
  - *Is there waste that could be removed without affecting quality?*
  - *Would you want to receive services in the manner Medicaid members do?*
  - *Where are services located in relation to critical populations?*
  - *Are there transportation connectors?*
  - *Are GeoAccess® like maps done?*
- ▶ What important health sustaining services are missing in the area and how might available resources be reallocated or developed to address these missing resources?
- ▶ What are the identified redundancies including excess inpatient beds in the service area and how might these resources be reassigned/redesigned?

# To transform a system, one needs to know the system ...

## **STEP 1c: Understanding the financial implications of change and how to rebalance**

- ▶ How does the change in service structure impact financial stability of involved services? What are the plans for addressing these financial changes?
- ▶ How will PPS facilities address the expected reduction in hospital service use (emergency department and inpatient services, including reduction in excess bed capacity) and financially maintain appropriate tertiary care services?
- ▶ What is the potential for repurposing redundant facilities? What would be required to repurpose? Are there other community non-health needs that could be addressed such as housing?
- ▶ What are the financial implications of staffing changes to ensure appropriate redistribution, recruitment and retention? How will these be addressed?



# Once the system is understood...

## **STEP 2: Understand the issues driving avoidable hospital use**

- ▶ What health conditions in the Medicaid population are getting insufficient primary, preventive and community based care?
- ▶ What chronic diseases are potentially preventable if these services were available?
- ▶ What social conditions are affecting the Medicaid population such that it affects compliance with medical and/or behavioral health treatment?
- ▶ Where are the disconnects in the health care system that affect continuity of care?
- ▶ Where are the resource gaps that are keep Medicaid members from achieving health?



## **STEP 2: Understanding the issues driving avoidable hospital use...**

- ▶ What are the language/cultural/ethnic considerations for the at risk populations?
- ▶ What is the impact of literacy and health literacy?
- ▶ What are the strengths of the at risk population that can be used to build a healthier community?
  - ▶ Are these strengths (e.g., religious organization) included in community resources?
  - ▶ Are there links that are or can be created to these resources?

# Using data to understand the issues driving avoidable hospital use ...

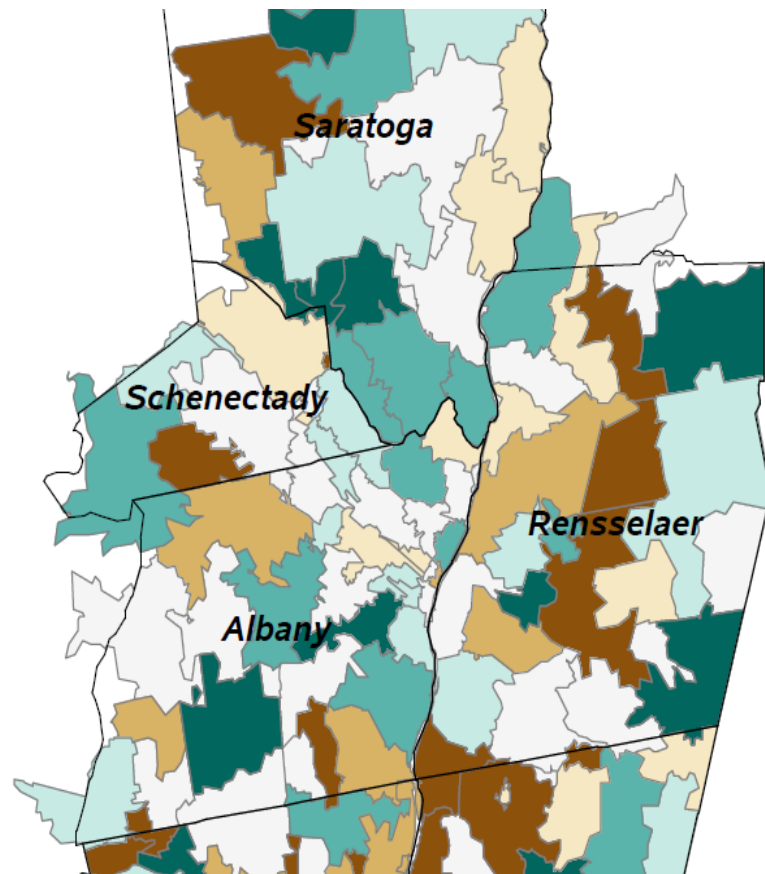
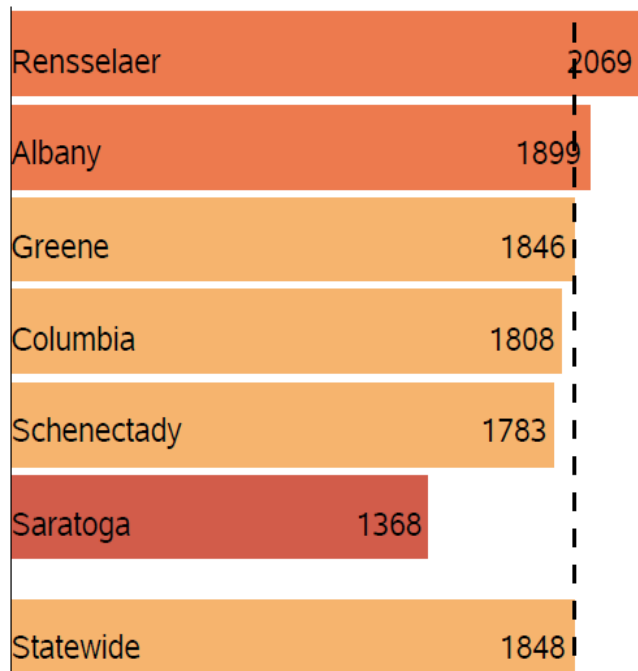
## Decisions need to be driven by data....

The Department is making data available on the DSRIP website. We strongly suggest that this be your initial primary source of data.

[http://www.health.ny.gov/health\\_care/medicaid/redesign/dsrp\\_performance\\_data/](http://www.health.ny.gov/health_care/medicaid/redesign/dsrp_performance_data/)

# DSRIP Performance Chartbooks

Capital District  
Adult Overall Composite  
Prevention Quality Indicators (PQI90)  
Medicaid Recipients, 2011-2012



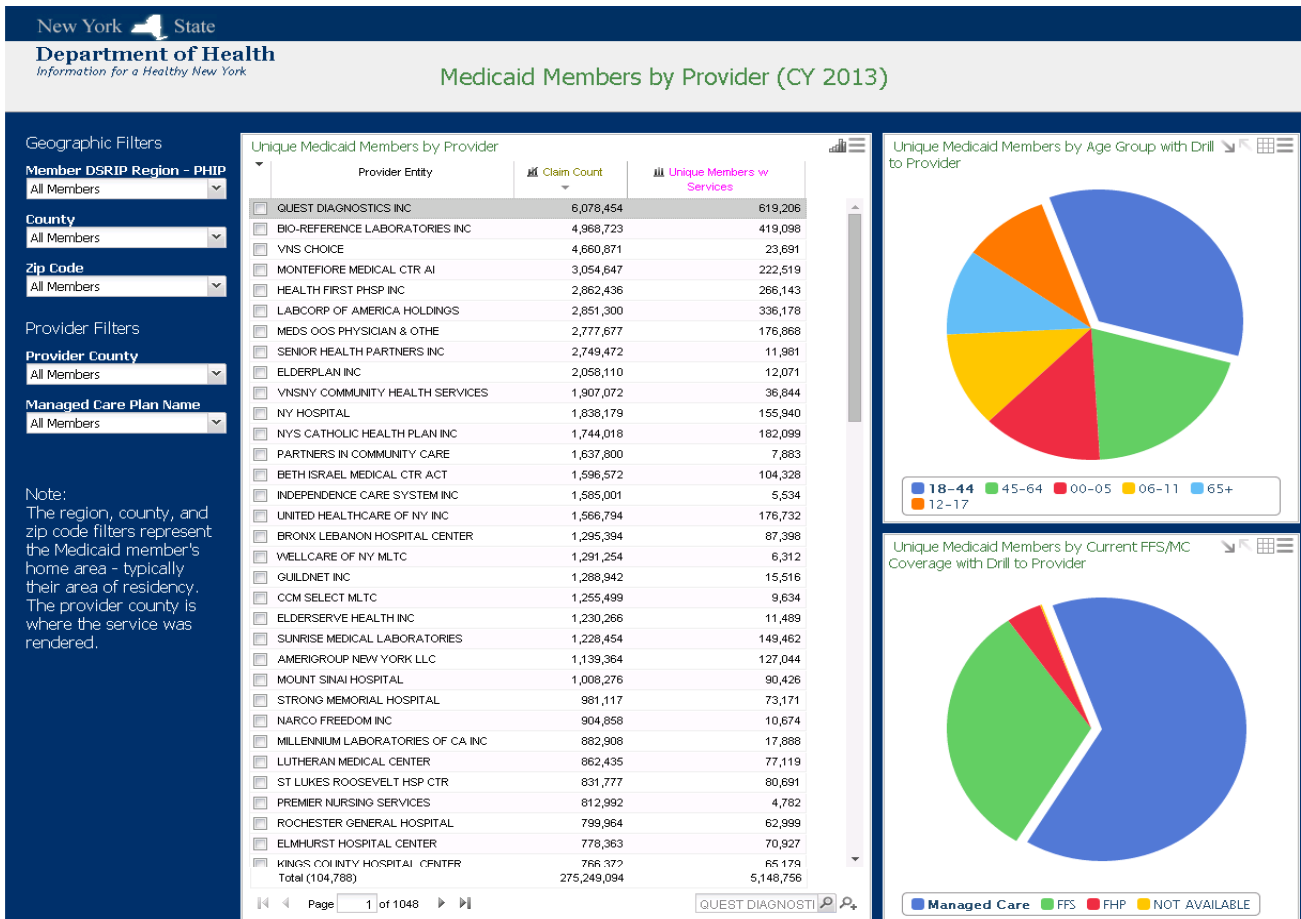
# Salient Data Workbooks



**Central Member Region**  
**Member County: All Counties**  
**07/01/2012 - 06/30/2013**

Provider Entity	Provider Name	Inpatient		Clinic		Emergency Room		Practitioner		Combined	
		Discharge	Members	Claims	Members	Visits	Members	Claims	Members	Utilization	All Members
E0263721	UNIVERSITY HSP SUNY HLTH SC	6,823	4,849	297,399	30,875	25,588	14,608			329,810	35,933
E0238207	UNITED HEALTH SERV HOSP INC	4,452	3,569	276,309	21,466	18,838	9,780			299,599	23,664
E0169412	ST.JOSEPH'S HSP HLTH CTR	5,049	4,051	211,973	17,989	24,468	12,040			241,490	22,691
E0252100	SYRACUSE COMM HEALTH CTR INC			107,433	21,860			4,980	1,295	112,413	21,988
E0265381	OUR LADY OF LOURDES MEM	2,551	2,150	203,145	20,339	12,610	7,263			218,306	21,700
E0271135	CROUSE HOSPITAL	5,837	4,968	194,606	15,817	10,154	5,957			210,597	20,115
E0262911	ARNOT OGDEN MEDICAL CENTER	3,144	2,677	110,022	9,067	13,948	6,809			127,114	12,783
E0265869	CAYUGA MEDICAL CTR/ITHACA	1,283	1,117	93,085	9,653	5,246	2,965			99,614	10,449
E0264411	AUBURN MEMORIAL HOSPITAL	1,518	1,255	73,024	6,852	8,752	4,329			83,294	8,357
E0271157	CORTLAND REG MED CTR	1,577	1,258	83,432	6,627	6,899	3,448			91,908	7,662
E0262918	ST JOSEPHS HOSPITAL ELMIRA	1,614	1,150	30,682	3,738	5,239	2,995			37,535	5,611
E0262914	ST JAMES MERCY HOSPITAL	1,059	873	38,345	3,705	5,459	2,718			44,863	4,810
E0263054	CORNING HOSP	973	825	29,857	3,132	4,995	2,886			35,825	4,767
E0005028	TINIO JAMES DEL ROSARIO MD							9,874	3,688	9,874	3,688
E0262967	ROBERT PACKER HOSP PA	1,173	937	15,616	2,237	2,985	1,622			19,774	3,458
E0262944	PLANNED PARENTHOOD SO FINGER LAKES			5,769	3,369					5,769	3,369
E0216562	SMITH ROY ANTHONY MD							12,378	3,210	12,378	3,210
E0086000	FAMILY SER OF CHEMUNG CNTY MH			35,253	3,075					35,253	3,075
E0261363	GENEVA GENERAL HOSPITAL	447	375	33,714	2,651	700	487			34,861	3,050
E0024990	JURIGA JOHN DAVID MD							13,290	3,031	13,290	3,031
E0262916	SCHUYLER HOSPITAL	172	124	18,626	2,208	2,932	1,639			21,730	2,714
E0271171	STRONG MEMORIAL HOSPITAL	757	633	17,515	2,231	315	229			18,587	2,658
E0265860	IRA DAVENPORT MEM HSP IN	138	114	16,063	1,894	2,919	1,640			19,120	2,589
E0090927	LEONARD LAURA JEAN MD							10,490	2,398	10,490	2,398
E0144492	DRACKER ROBERT A MD							20,715	2,291	20,715	2,291
E0124722	HAYES MICHAEL FRANK DO							6,448	2,266	6,448	2,266
E0042006	SAMODAL RODRIGO T JR MD							8,384	2,179	8,384	2,179

# DSRIP Performance Dashboards



Web Based Performance Dashboards with drillable data on member counts by region and baseline performance data (PQIs, PPRs, etc.) are under development by Salient.



## **STEP 2: Understanding the issues driving avoidable hospital use...**

- ▶ In addition to the data sources on the DSRIP website, there are numerous other sources of data including those collected by the PPS that can be used. Many of these are listed in the Part I of this webinar series.
- ▶ If using sources other than that provided by the Department, ensure the data is valid, reliable and reproducible.

# The DSRIP Community Needs Assessment

## STEP 3: Putting it all together

- The data collected during this comprehensive assessment should allow the PPS to define their community system and how it functions, the key populations affecting avoidable hospital use and the reasons why, and the appropriate data that will support its decision making.
- From the data, the PPS should be able to chose the appropriate projects to address the findings of the CNA.
- At the end of the CNA, the PPS will need to provide a completed spreadsheet in Excel that identifies the projects chosen for their DSRIP project, baseline data and justification for that selection.



# DSRIP Project Plan Application

## Tentative List of Community Needs Assessment Sub-Sections

- Summary of Health Care & Community Resources
- Current vs. Future State of Health Delivery System
- Methodology of Community Assessment Process
- Community Demographics
- Population Health Statistics
- Provider Demographics
- List of Community Needs
- Community Resources PPS Can Mobilize
- Stakeholder & Community Engagement

# Questions?

**We want to hear from you!**

***DSRIP website:***

[www.health.ny.gov/dsrp](http://www.health.ny.gov/dsrp)

***DSRIP e-mail:***

[dsrip@health.state.ny.us](mailto:dsrip@health.state.ny.us)

***“Like” the MRT on Facebook:***

<http://www.facebook.com/NewYorkMRT>

***Follow the MRT on Twitter:*** @NewYorkMRT

***Subscribe to our listserv:***

[http://www.health.ny.gov/health\\_care/medicaid/redesign/listserv.htm](http://www.health.ny.gov/health_care/medicaid/redesign/listserv.htm)