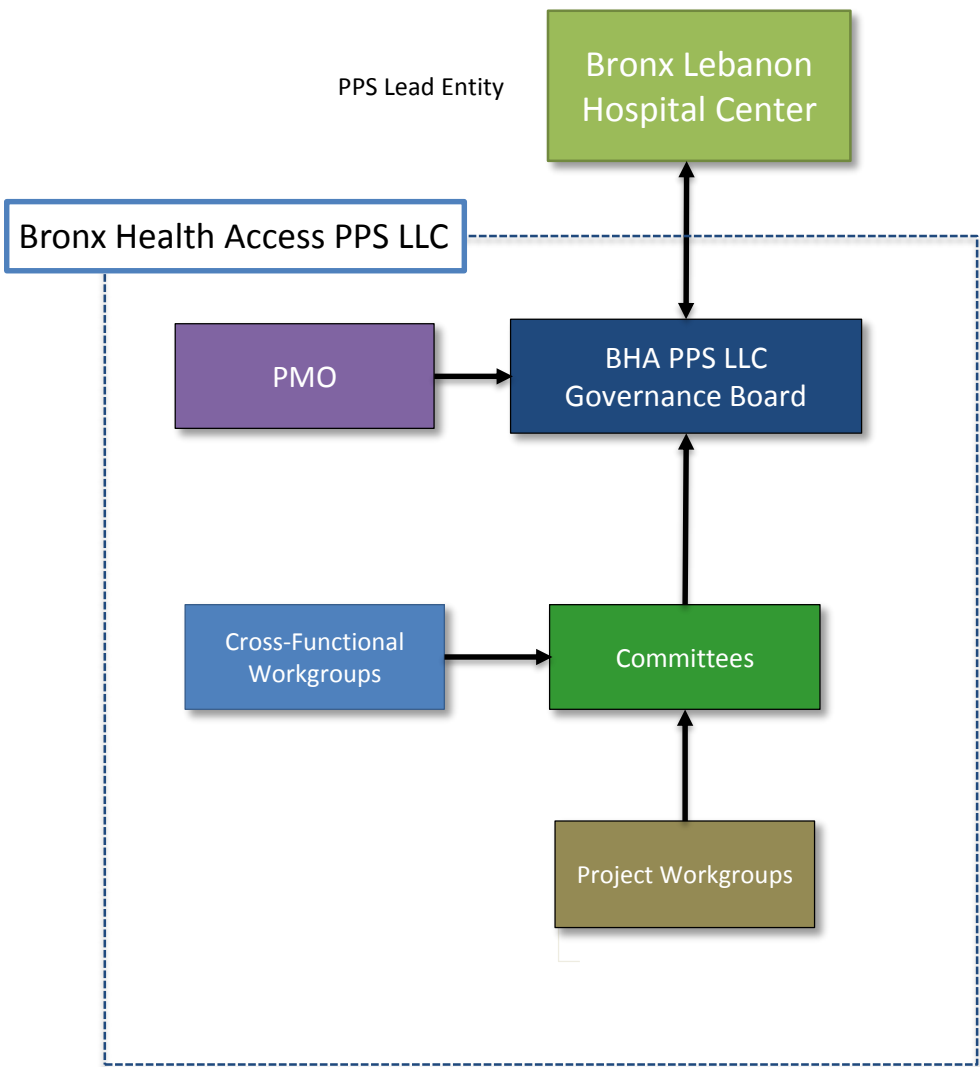




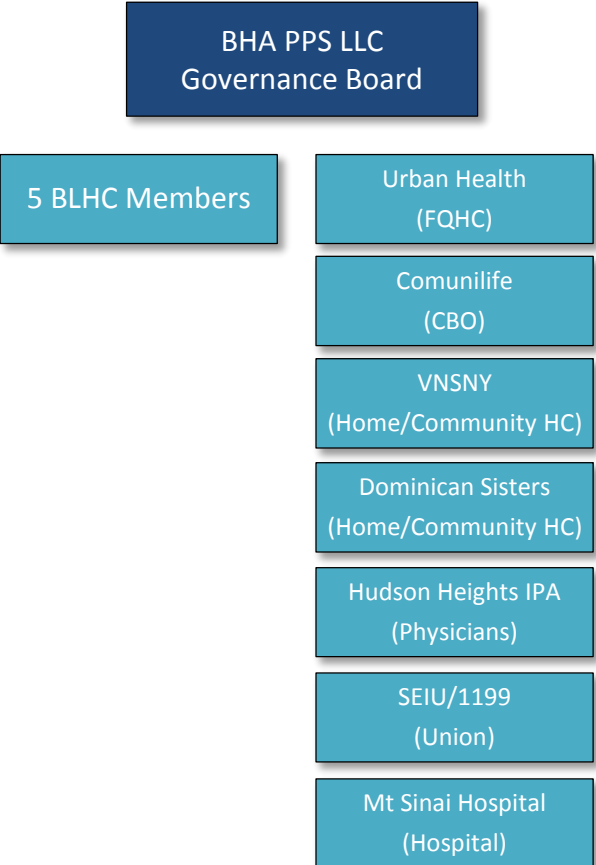
PAOP Presentation

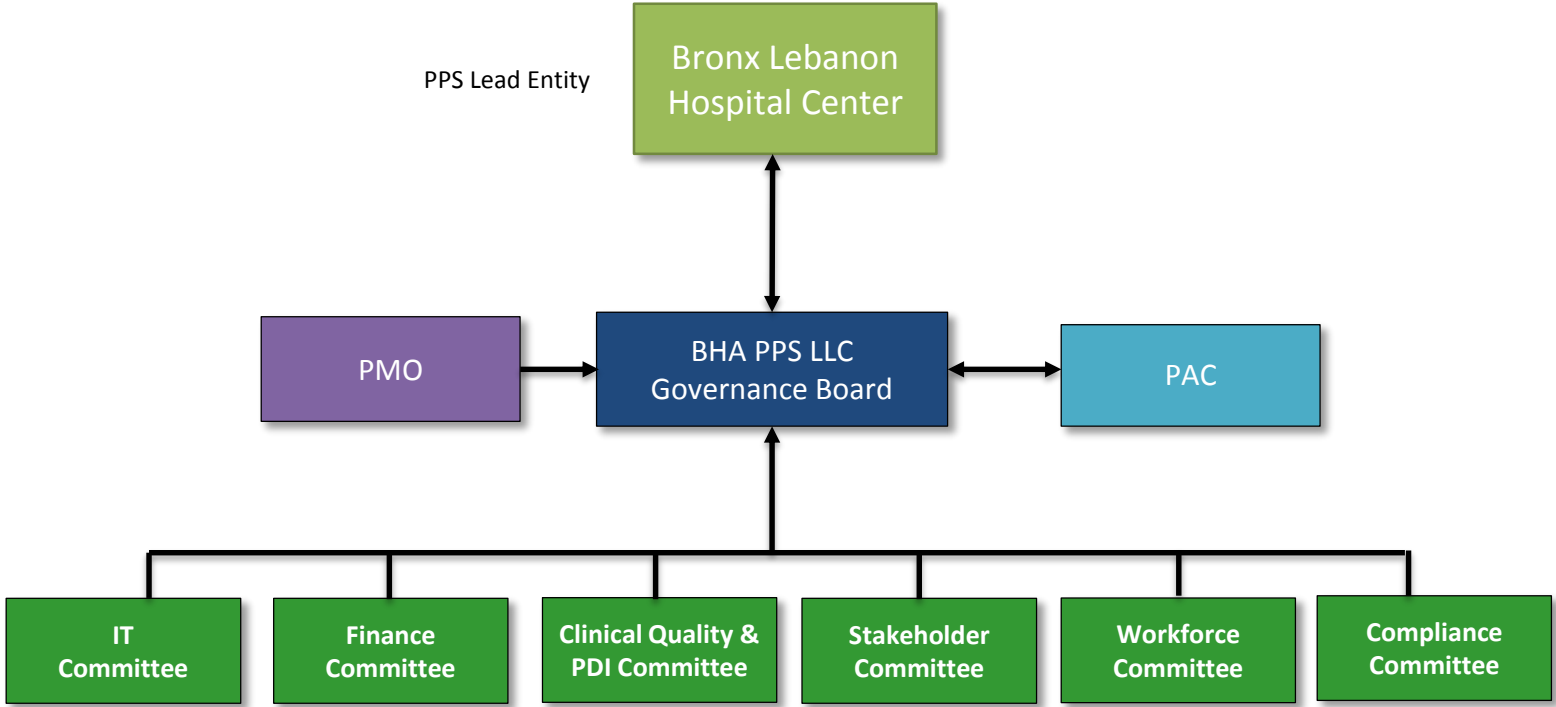
January 21, 2016

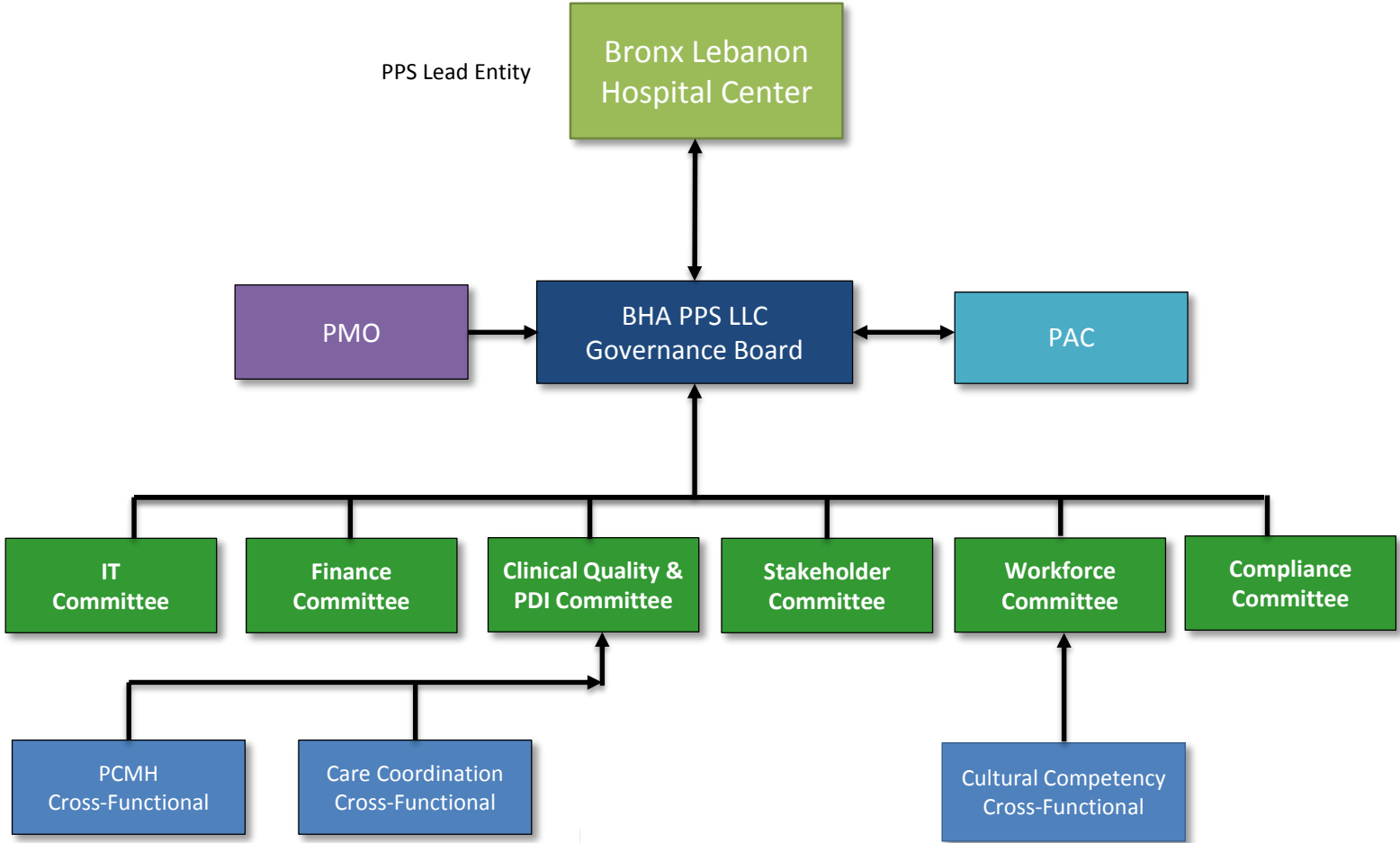
New York City

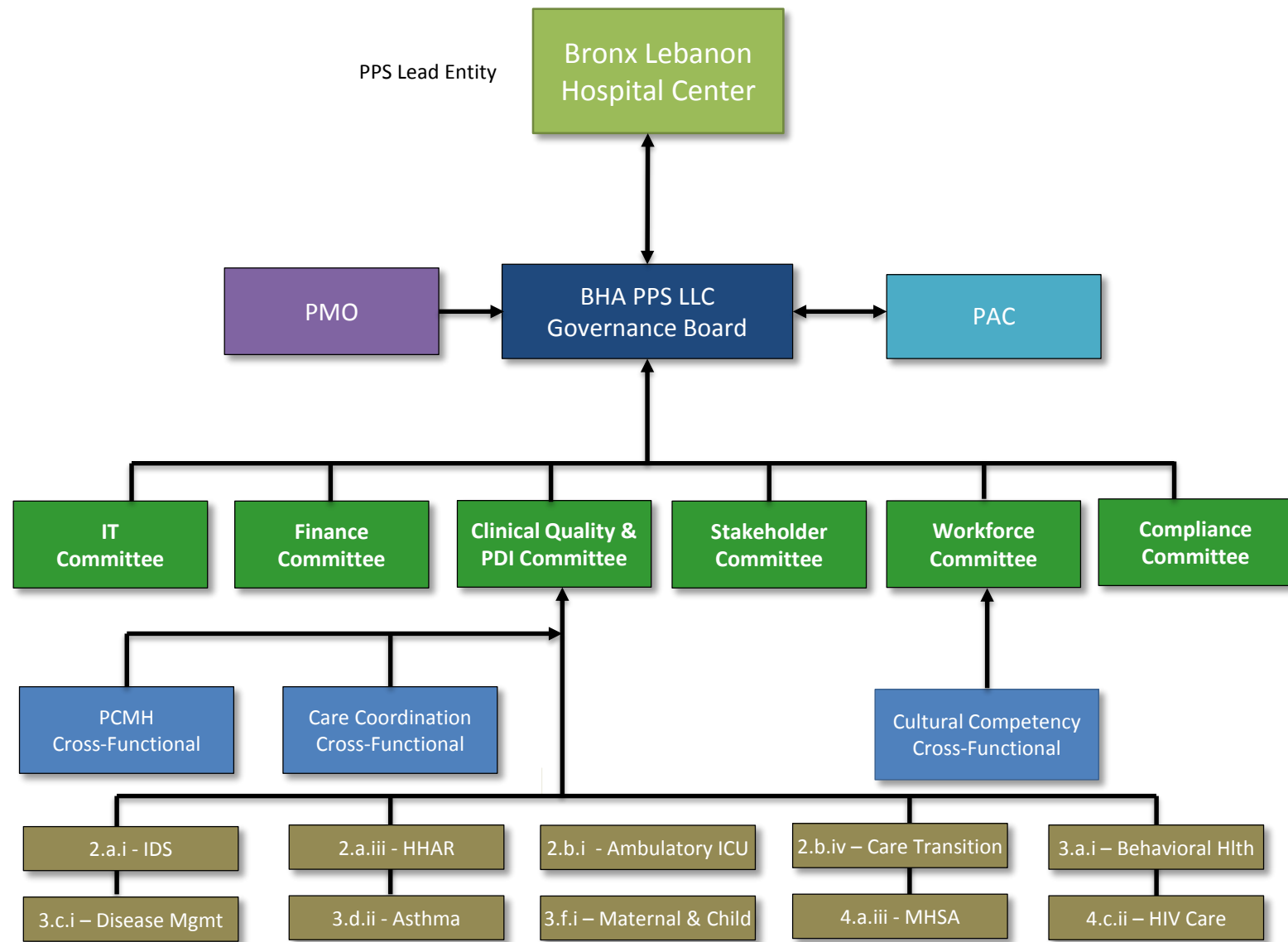












- **Project Funding**
 - Budget expenditure to meet milestones
 - Approvals by project committee, Finance and Board
 - Approximately \$4.4M budgeted for DY1

- **Project Funding**
 - Budget expenditure to meet milestones
 - Approvals by project committee, Finance and Board
 - Approximately \$4.4M budgeted for DY1
- **Developed Performance Funds Flow**
 - Worked closely with an independent consulting firm
 - Allocate Percentages to Provider Type
 - Project Level
 - Input from project teams
 - Input from partners

BHA Involved in Many Collaborations

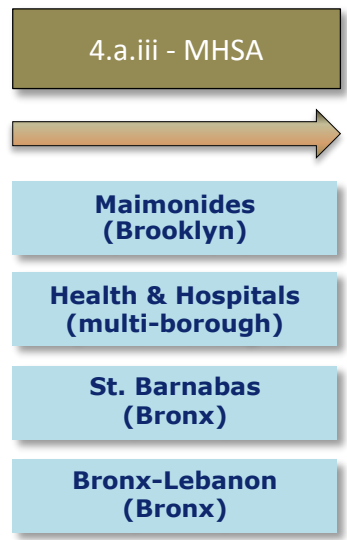
Across Committees, Workgroups and Projects

- **Collaboration across Committees, Workgroups and Projects**
 - **Steering Board**
 - **Workforce Committee**
 - **Cultural Competency and Health Literacy Workgroup**
 - **All 10 projects**
- **Cross-PPS Collaboration**
 - **HIV Coalition**
 - **Mental Health Substance Abuse Infrastructure**
 - **Consent Form**
 - **EIP Contracting**
- **Non-PPS and Inter-Agency Collaboration**
 - **NYC Dept of Mental Health and Hygiene**
 - **NYC Dept of Education**
 - **BronxRHIO**

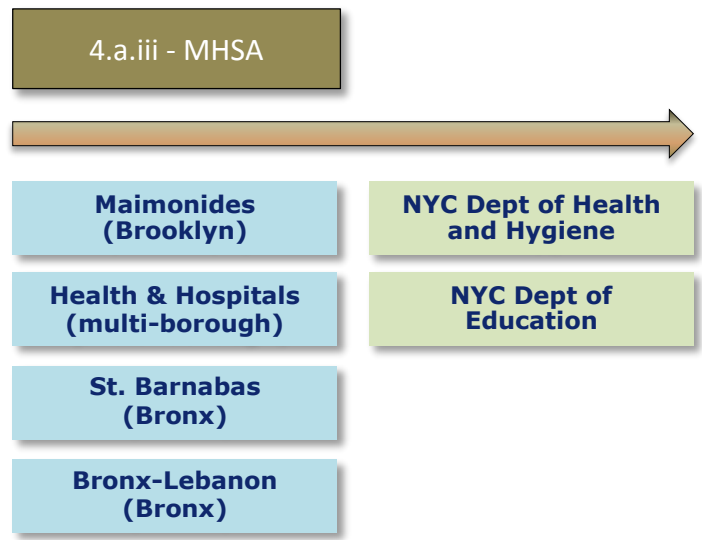
BHA Involved in Many Collaborations



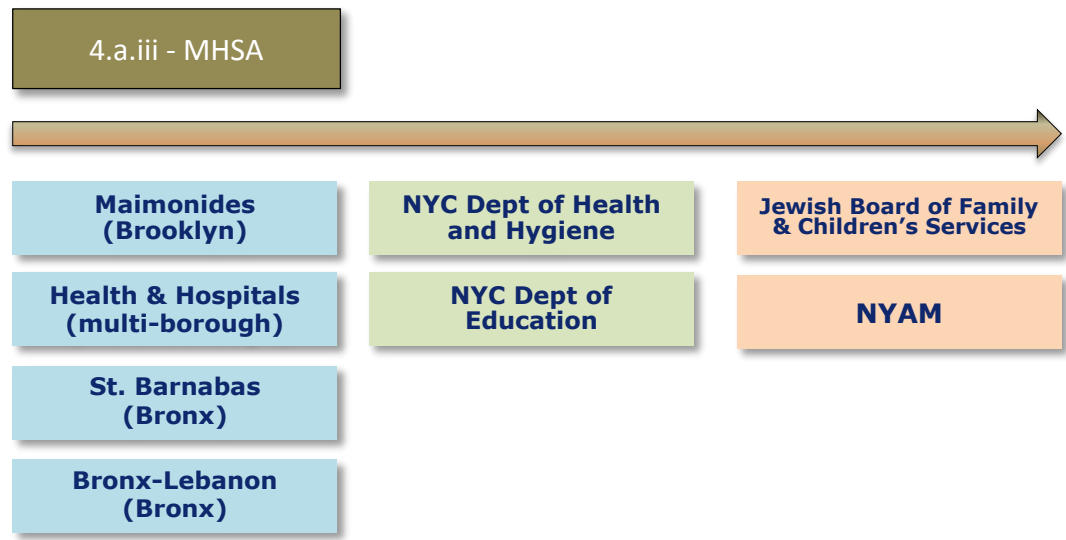
BHA Involved in Many Collaborations



BHA Involved in Many Collaborations



BHA Involved in Many Collaborations



BHA Involved in Many Collaborations

4.a.iii - MHSa



**Maimonides
(Brooklyn)**

**NYC Dept of Health
and Hygiene**

**Jewish Board of Family
& Children's Services**

**Health & Hospitals
(multi-borough)**

**NYC Dept of
Education**

NYAM

**St. Barnabas
(Bronx)**

**Strengthen
infrastructure used
to promote Mental,
Emotional and
Behavioral health.**

**Bronx-Lebanon
(Bronx)**

BHA Involved in Many Collaborations



4.c.ii – HIV Care

BHA Involved in Many Collaborations

4.a.iii - MHSA

4.c.ii – HIV Care

BHA Involved in Many Collaborations

4.c.ii – HIV Care

**NYC Dept of Health
and Hygiene**

**Mt Sinai Hospital
(Manhattan)**

**Health & Hospitals
(Multi-borough)**

**St. Barnabas
(Bronx)**

**Bronx-Lebanon
(Bronx)**

**NYU Lutheran
(Brooklyn)**

**Maimonides
(Brooklyn)**

**NY Hospital Queens
(Queens)**

**Montefiore
(Westchester)**

BHA Involved in Many Collaborations

4.c.ii – HIV Care

NYC Dept of Health
and Hygiene

Mt Sinai Hospital
(Manhattan)

Health & Hospitals
(Multi-borough)

St. Barnabas
(Bronx)

Bronx-Lebanon
(Bronx)

NYU Lutheran
(Brooklyn)

Maimonides
(Brooklyn)

NY Hospital Queens
(Queens)

Montefiore
(Westchester)



Reduce
Barriers to
Access and
Retention of
HIV Care

BHA Involved in Many Collaborations

4.c.ii – HIV Care

NYC Dept of Health and Hygiene

Mt Sinai Hospital (Manhattan)

Health & Hospitals (Multi-borough)

St. Barnabas (Bronx)

Bronx-Lebanon (Bronx)

NYU Lutheran (Brooklyn)

Maimonides (Brooklyn)

NY Hospital Queens (Queens)

Montefiore (Westchester)



Reduce Barriers to Access and Retention of HIV Care



Recent Accomplishments

BHA Involved in Many Collaborations

4.c.ii – HIV Care

NYC Dept of Health and Hygiene

Mt Sinai Hospital (Manhattan)

Health & Hospitals (Multi-borough)

St. Barnabas (Bronx)

Bronx-Lebanon (Bronx)

NYU Lutheran (Brooklyn)

Maimonides (Brooklyn)

NY Hospital Queens (Queens)

Montefiore (Westchester)



Reduce Barriers to Access and Retention of HIV Care



Recent Accomplishments

Launched Peer Intervention Pilot Program

Approved HIV Coalition Bylaws

BHA Involved in Many Collaborations

4.c.ii – HIV Care

 NYC Dept of Health and Hygiene

Mt Sinai Hospital (Manhattan)

Health & Hospitals (Multi-borough)

St. Barnabas (Bronx)

Bronx-Lebanon (Bronx)

NYU Lutheran (Brooklyn)

Maimonides (Brooklyn)

NY Hospital Queens (Queens)

Montefiore (Westchester)



Reduce Barriers to Access and Retention of HIV Care



Recent Accomplishments

Launched Peer Intervention Pilot Program

Approved HIV Coalition Bylaws

BHA Involved in Many Collaborations

4.a.iii - MHSA

4.c.ii – HIV Care

2.a.i – IDS

BHA Involved in Many Collaborations

2.a.i – IDS

ACP
(City-wide)

NYC Health &
Hospitals (Bronx)

St. Barnabas
(Bronx)

Bronx-Lebanon
(Bronx)

BHA Involved in Many Collaborations

2.a.i – IDS

ACP
(City-wide)

NYC Health &
Hospitals (Bronx)

St. Barnabas
(Bronx)

Bronx-Lebanon
(Bronx)



Consent Form
Individual vs Community

BHA Involved in Many Collaborations

2.a.i – IDS

- ACP (City-wide)
- NYC Health & Hospitals (Bronx)
- St. Barnabas (Bronx)
- Bronx-Lebanon (Bronx)



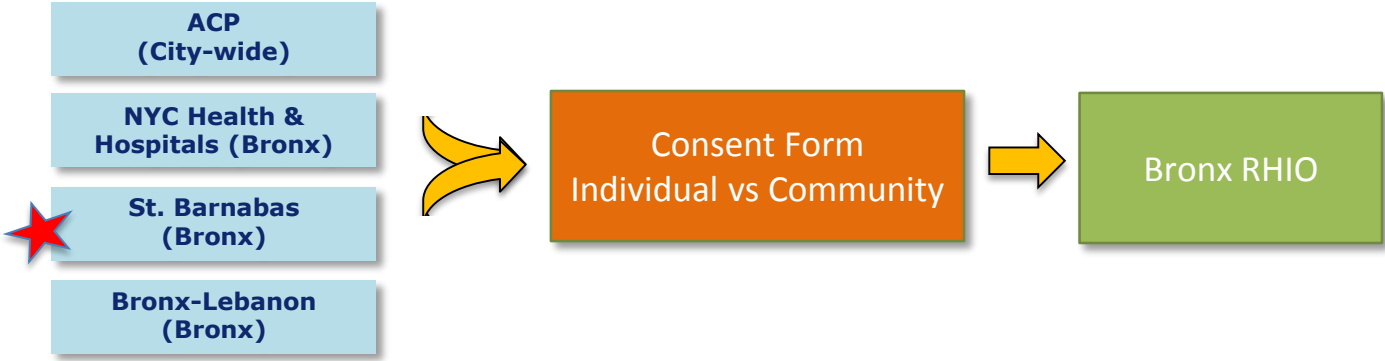
Consent Form
Individual vs Community



Bronx RHIO

BHA Involved in Many Collaborations

2.a.i – IDS



BHA Involved in Many Collaborations

4.a.iii - MHSA

4.c.ii – HIV Care

2.a.i – IDS

EIP Contracting

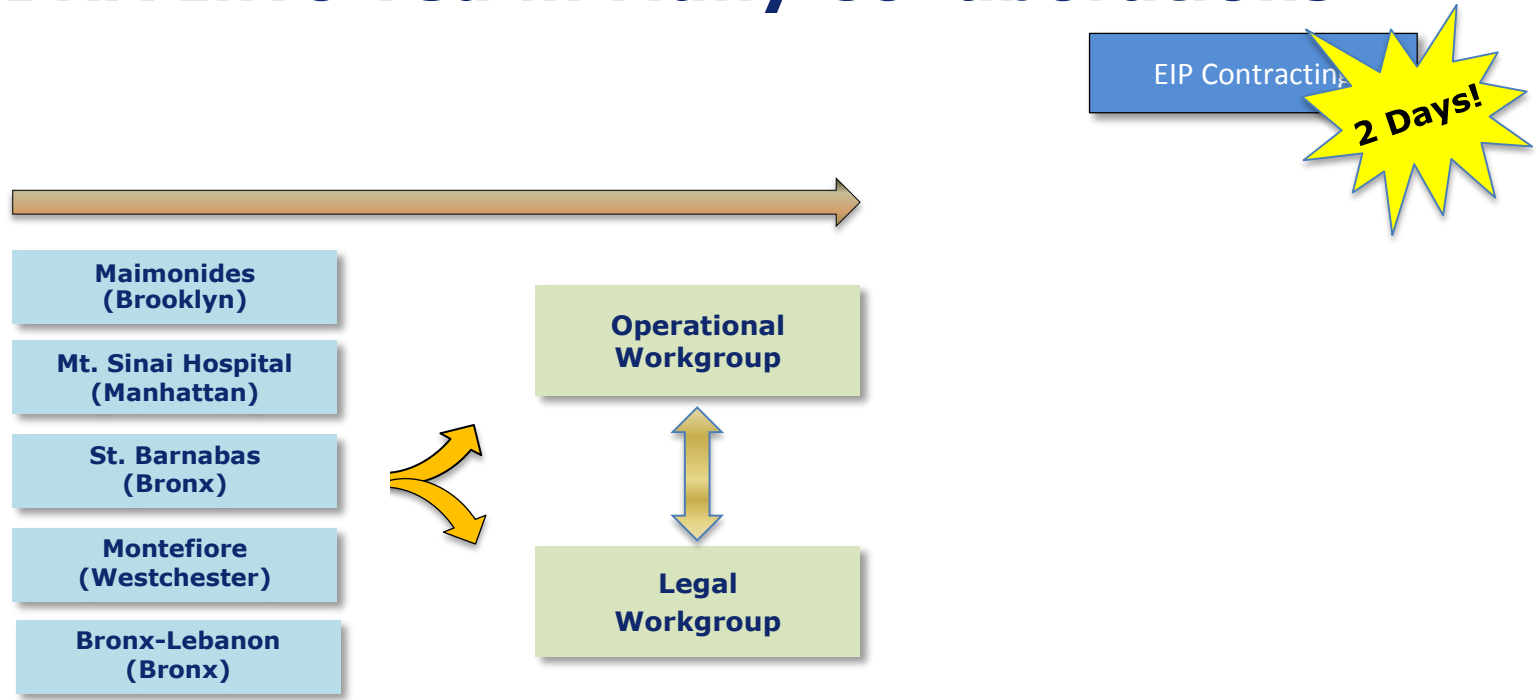
BHA Involved in Many Collaborations

EIP Contracting

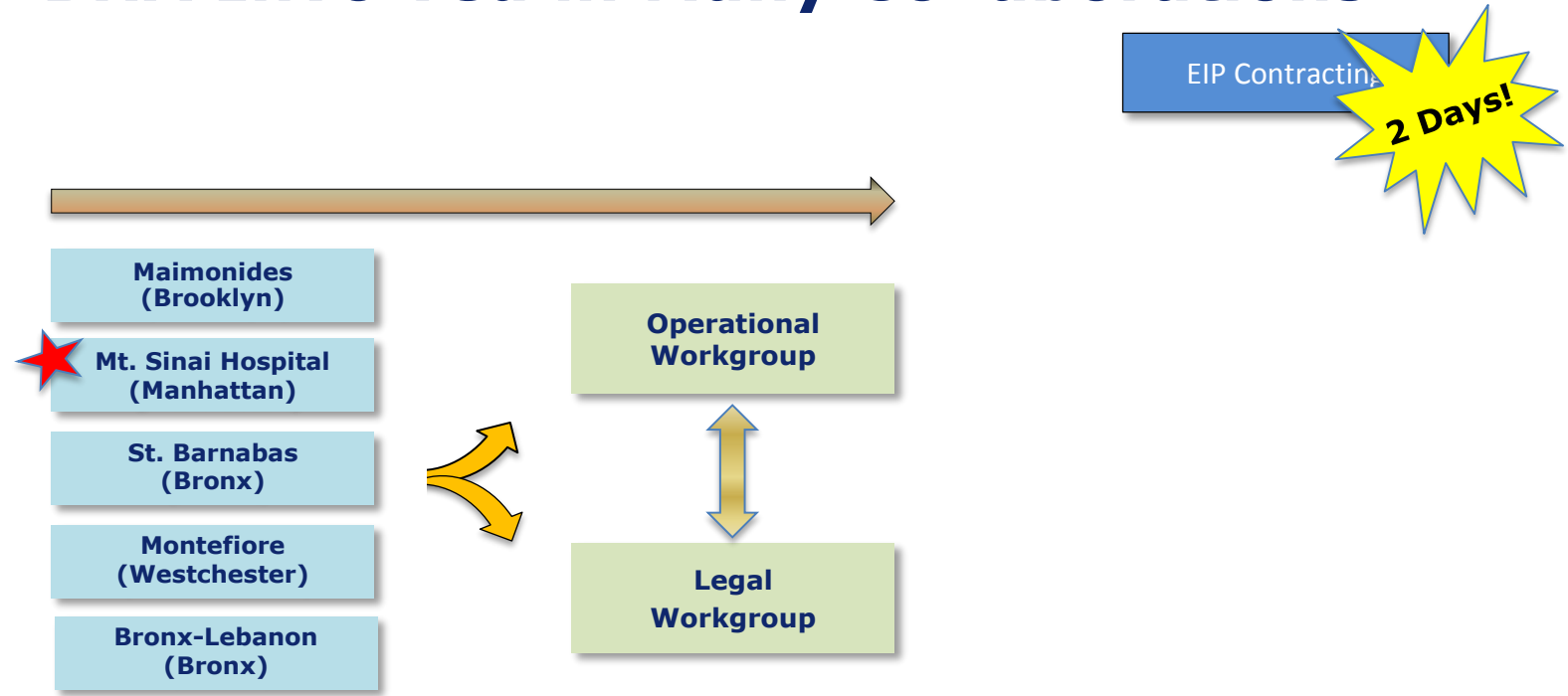


- Maimonides (Brooklyn)
- Mt. Sinai Hospital (Manhattan)
- St. Barnabas (Bronx)
- Montefiore (Westchester)
- Bronx-Lebanon (Bronx)

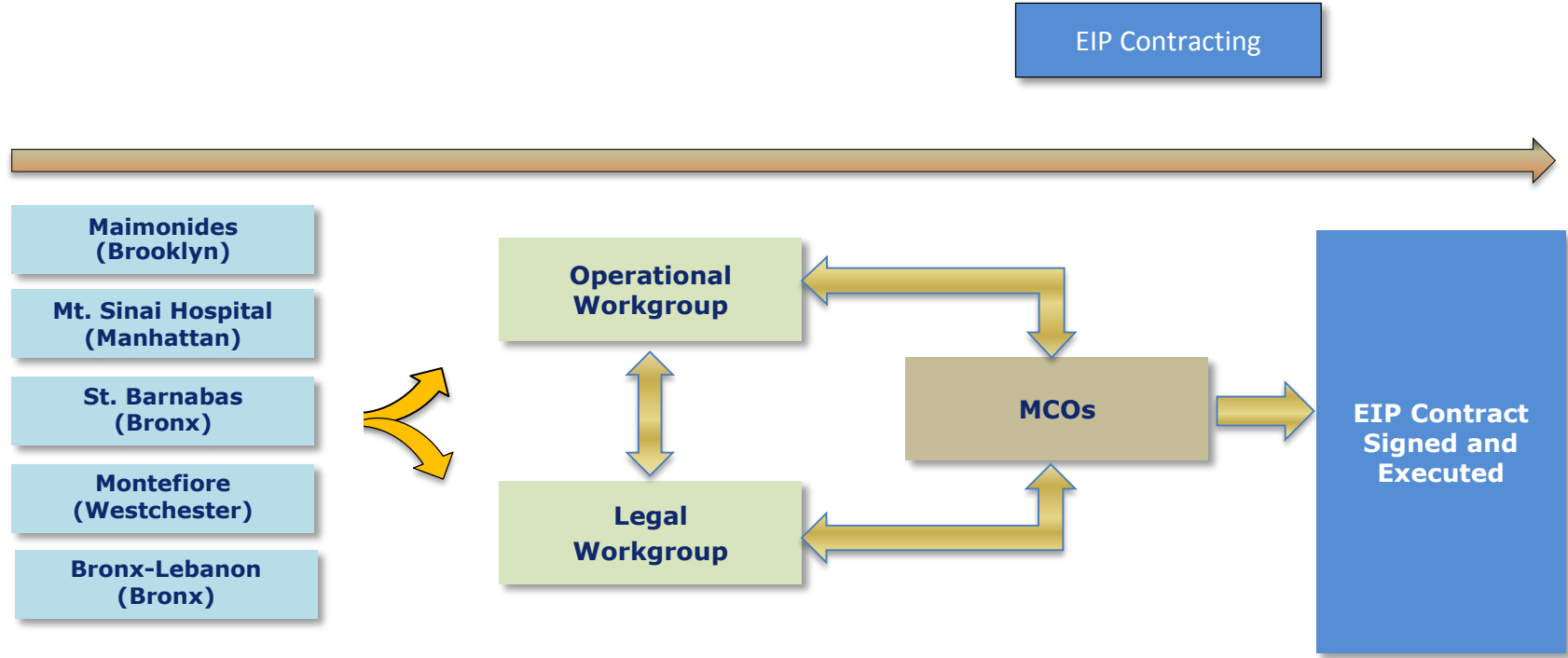
BHA Involved in Many Collaborations

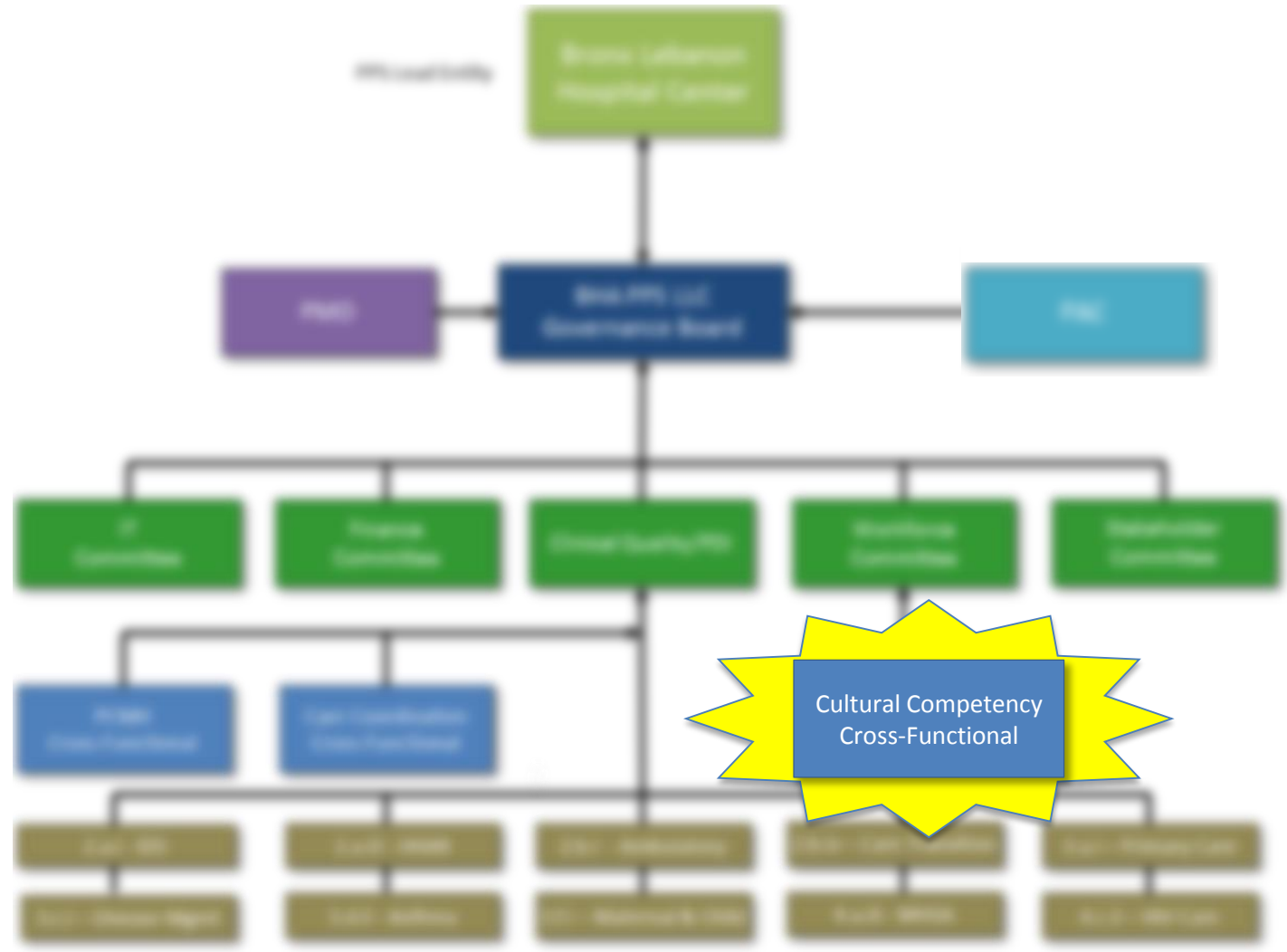


BHA Involved in Many Collaborations

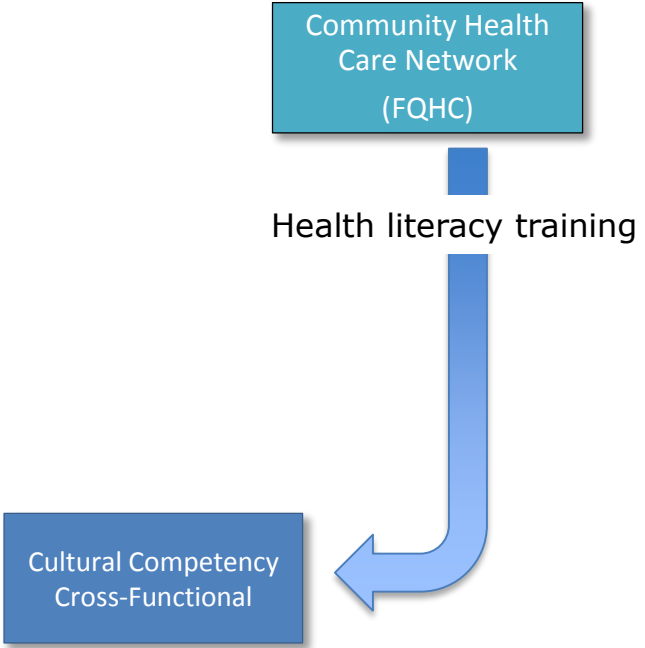


BHA Involved in Many Collaborations

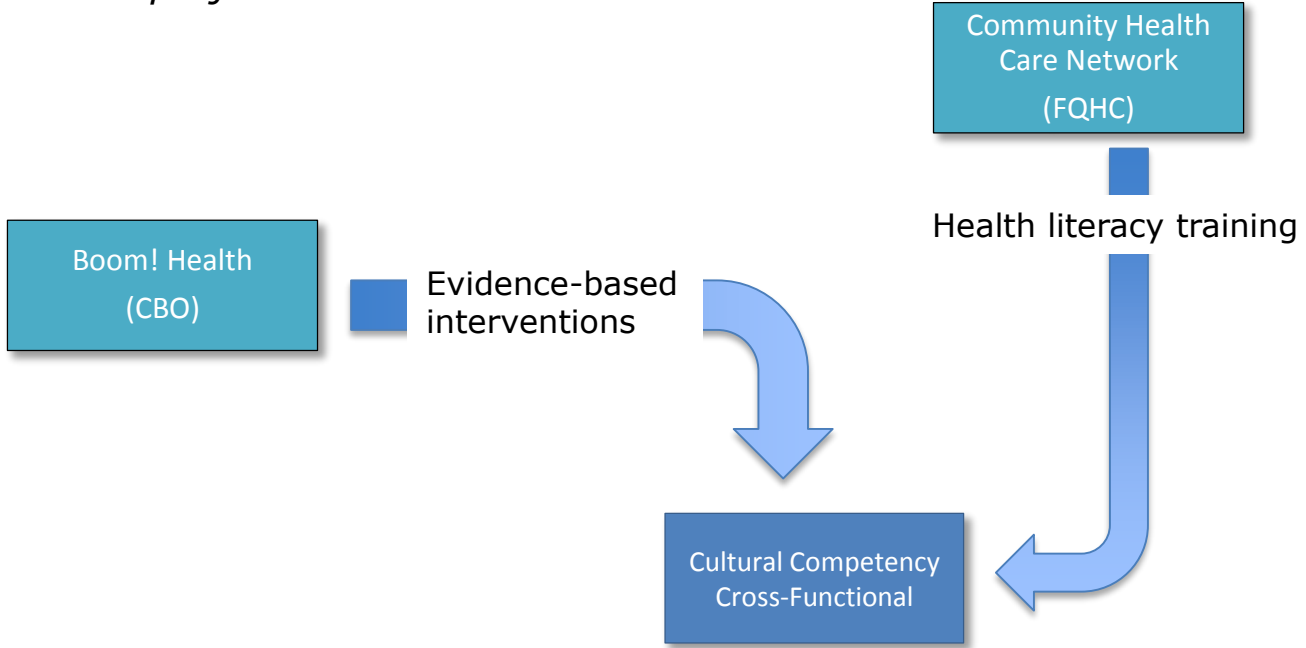




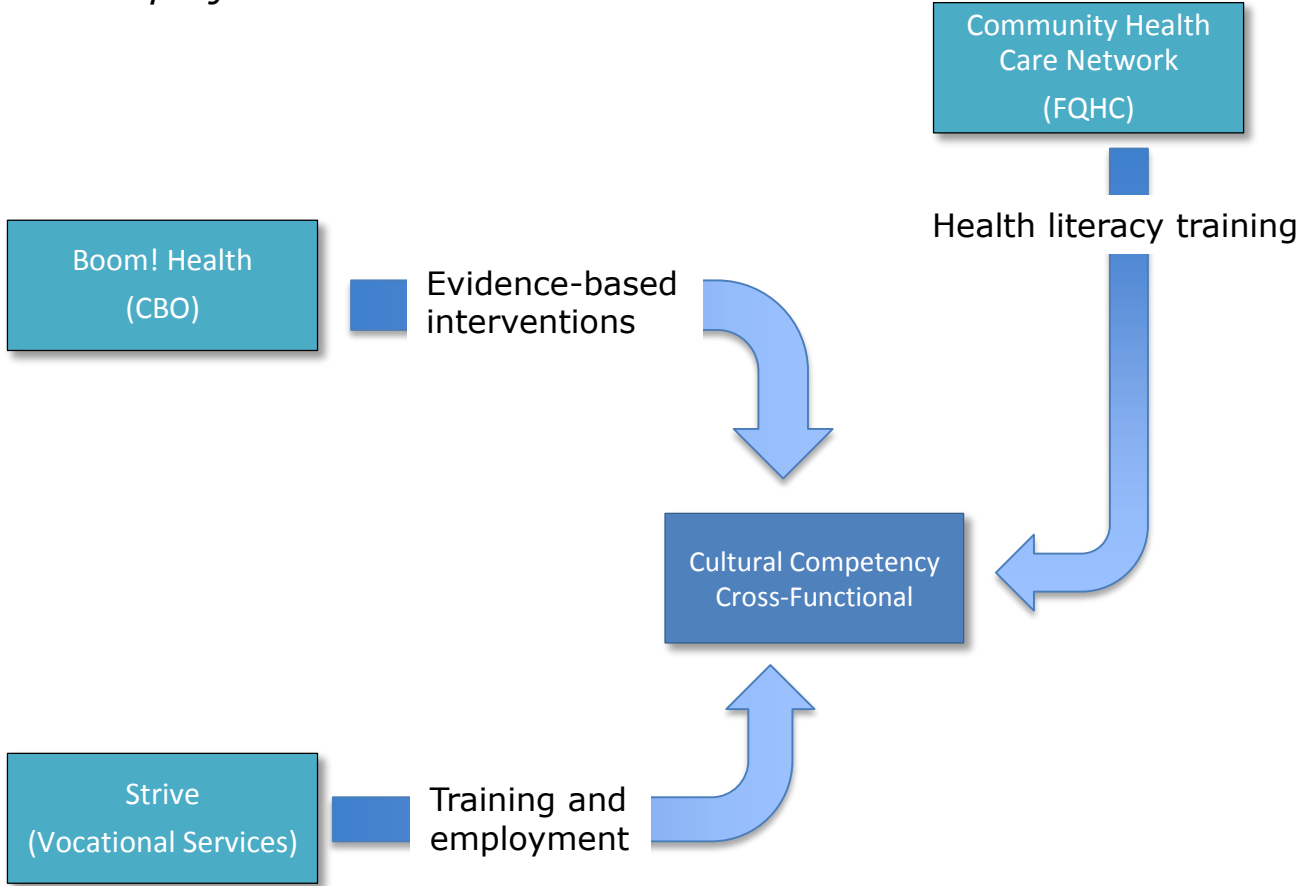
Cross-Functional Workgroup touches all 10 projects



Cross-Functional Workgroup touches all 10 projects



Cross-Functional Workgroup touches all 10 projects

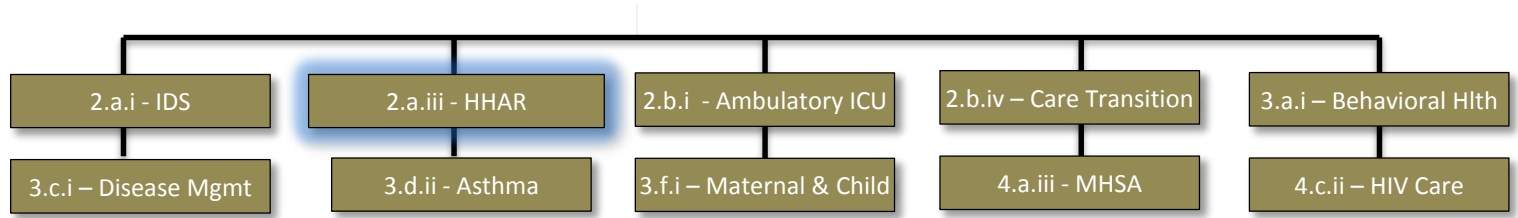


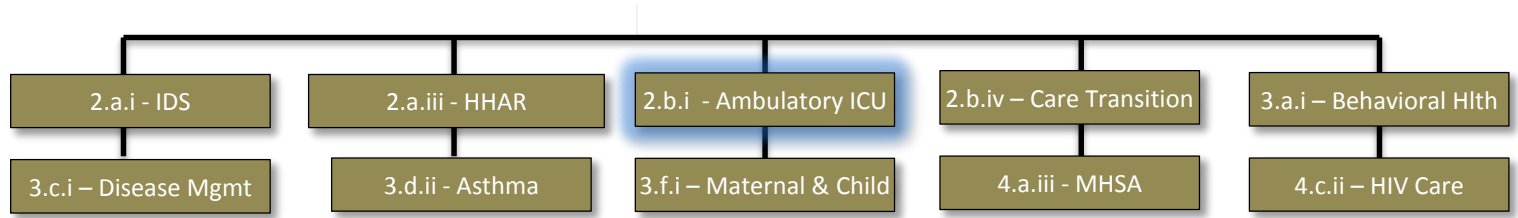
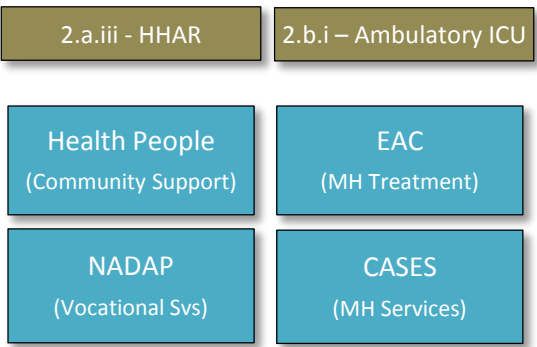


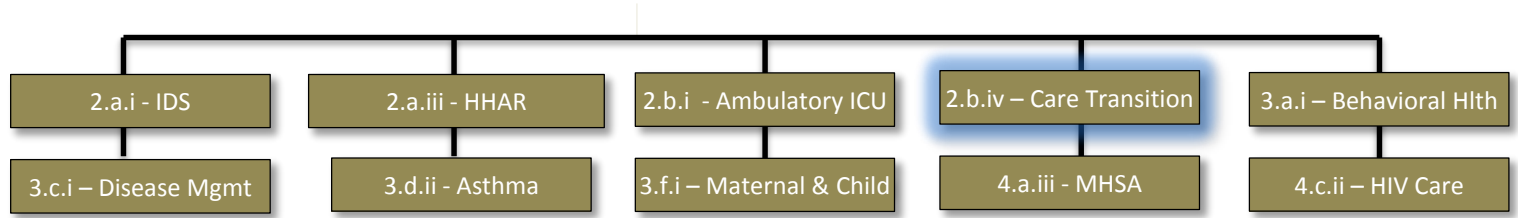
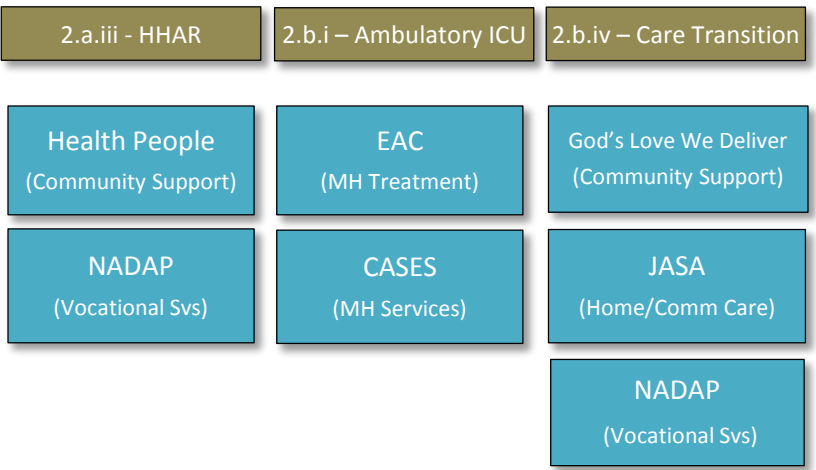
2.a.iii - HHAR

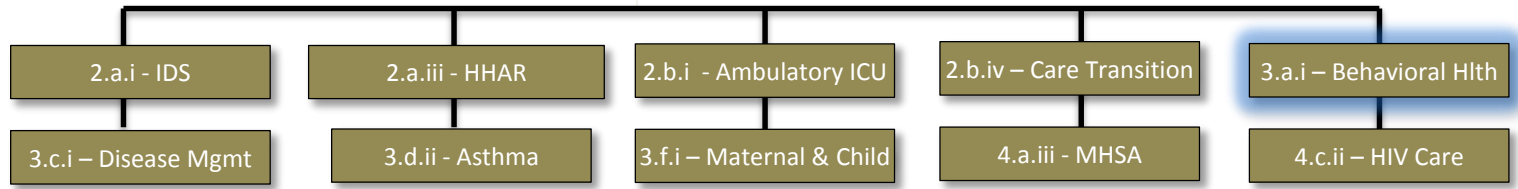
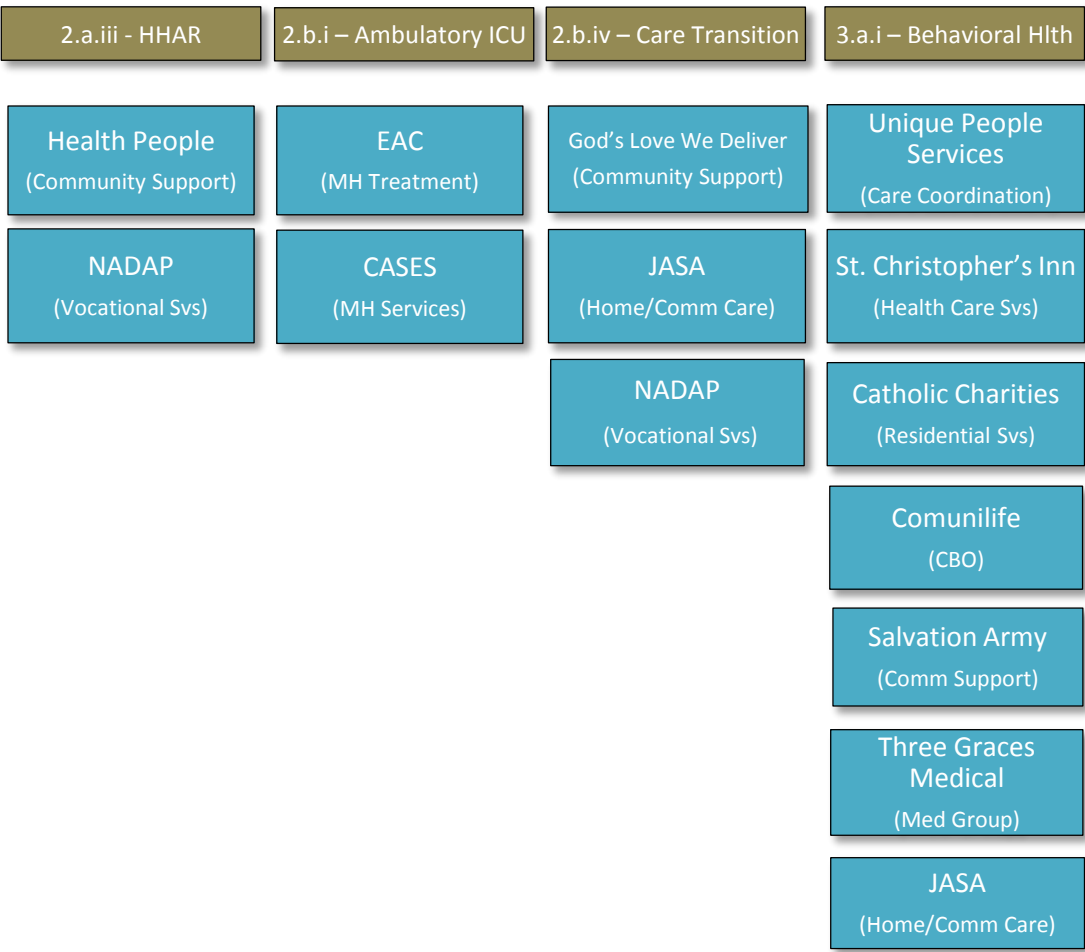
Health People
(Community Support)

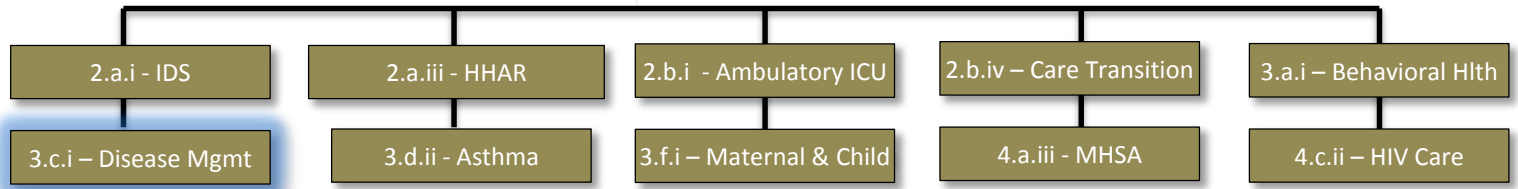
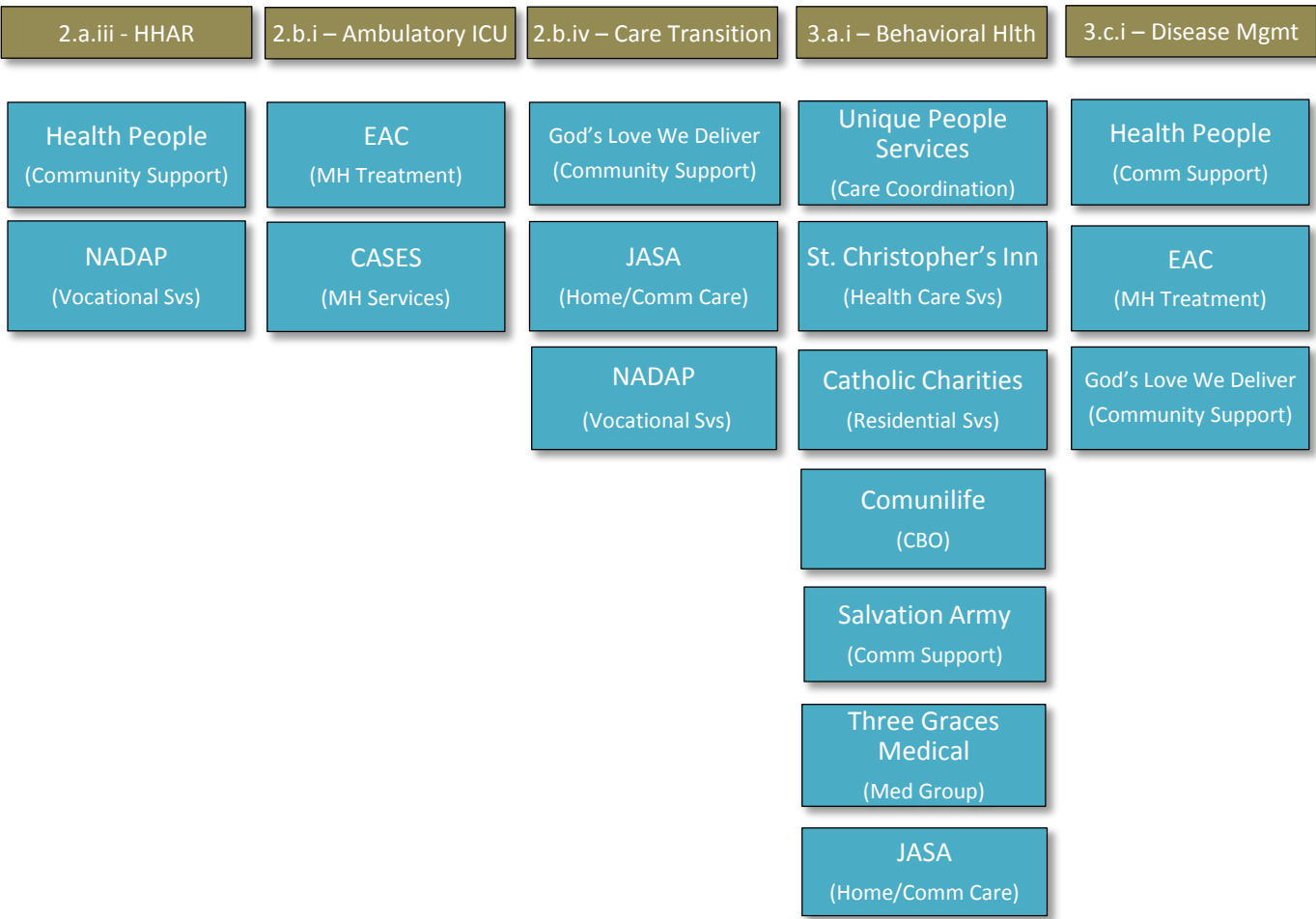
NADAP
(Vocational Svs)



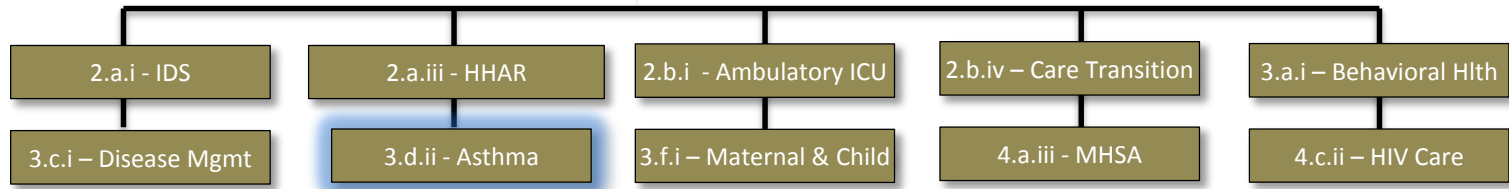
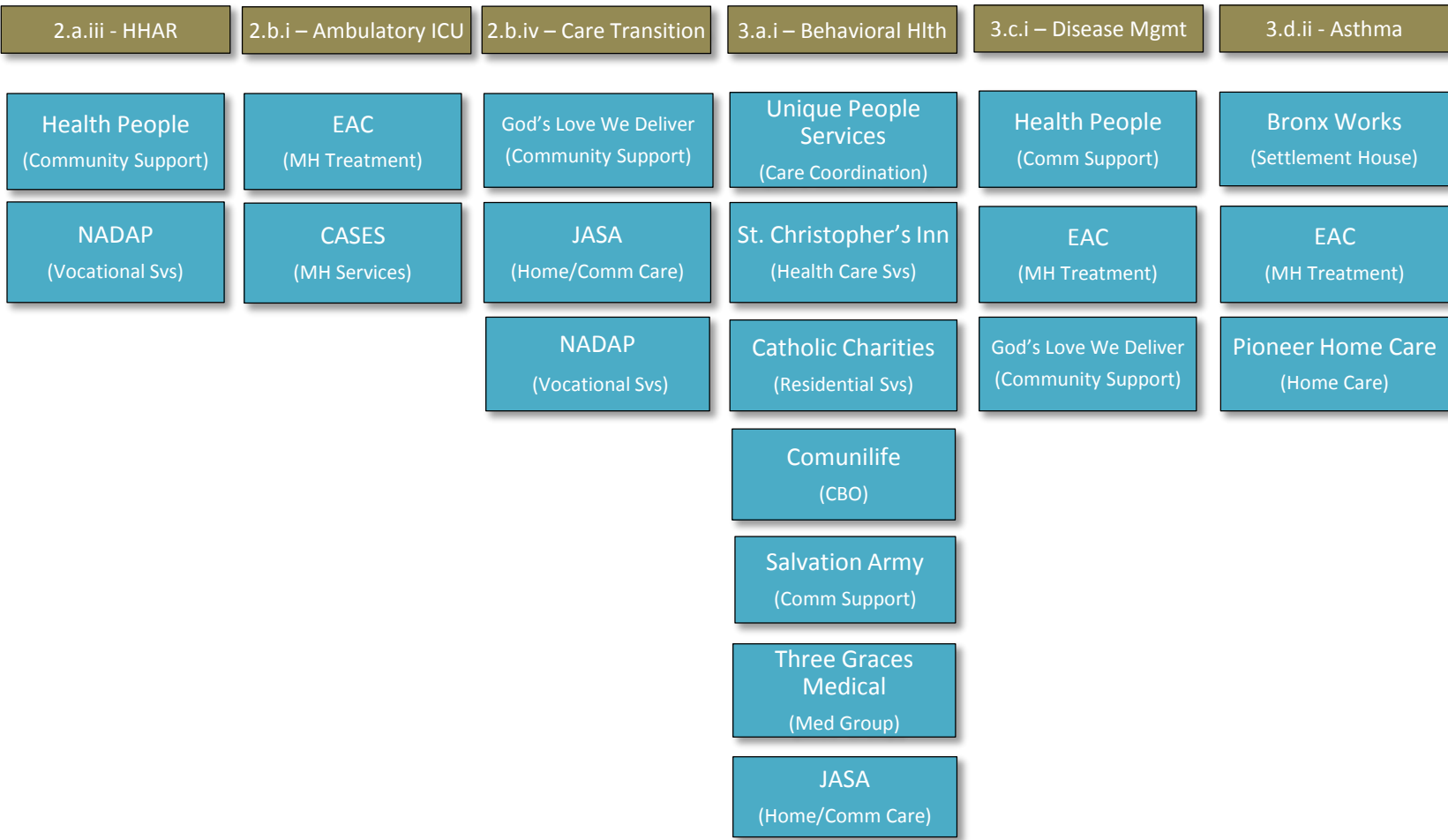




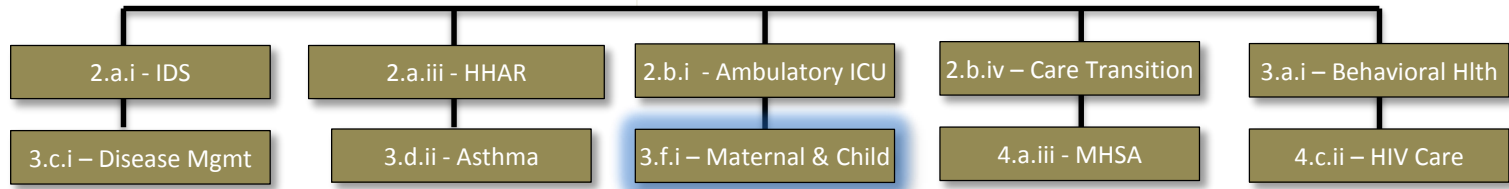
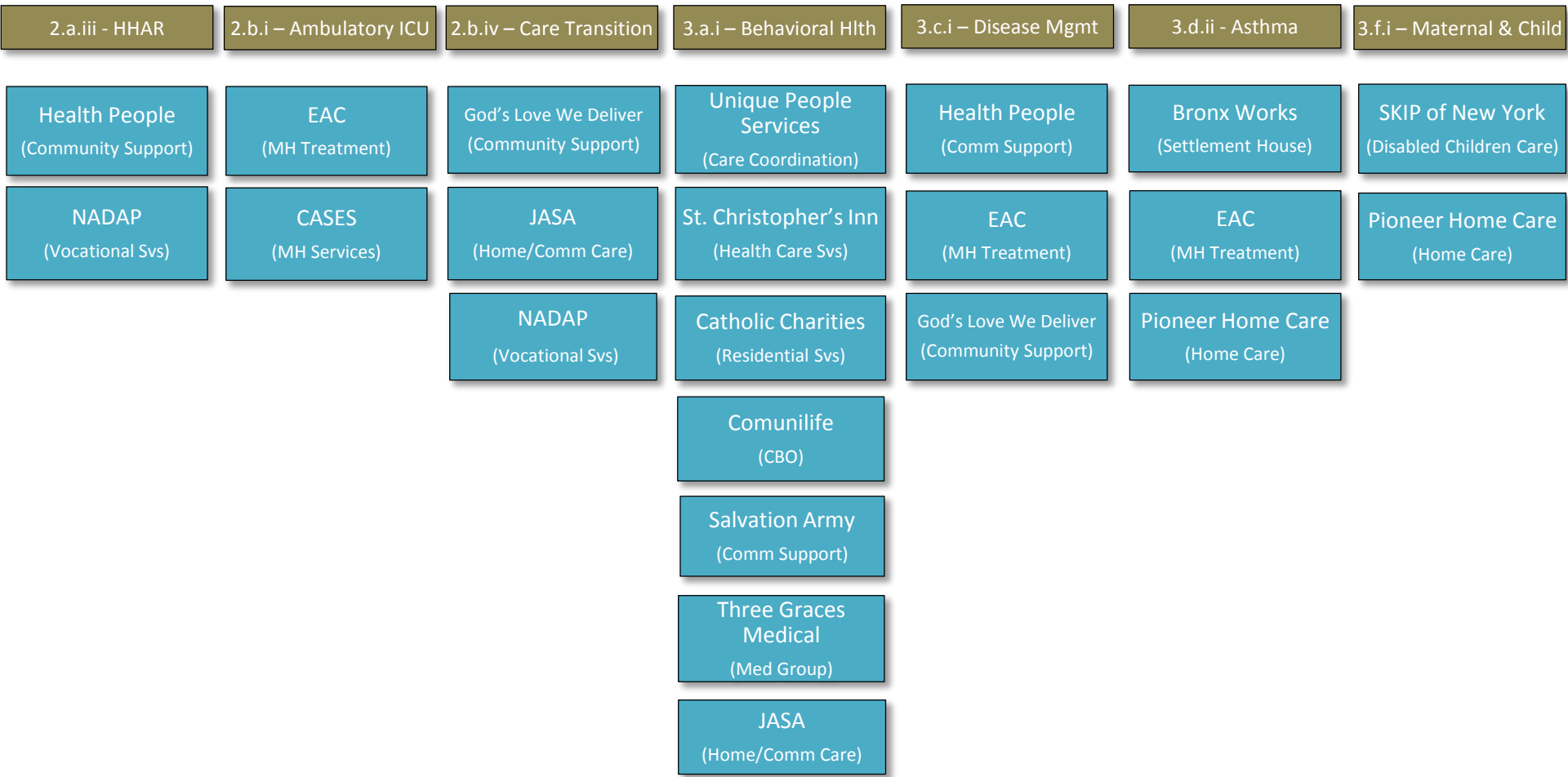




CBOs Involvement



CBOs Involvement



Future State Training

- Identify training needs and gaps
- Assess workforce skill development needs for clinical staff redeploying
- Survey partners to identify and leverage training resources
- Analyze PPS infrastructure changes to develop Leadership & HIT Training Programs

Assessing Skill Development Needs

- Leverage current & new curriculum to enhance workforce skills
- Evaluate new skills and credentials needed to support advanced Information Technology
- Focus on diversity in recruitment strategies

Partner Engagement and Input

- Evaluate Partner & Practitioner Engagement needs
- Project workgroups design standards of care by project
- Focus on Partner understanding, awareness, and buy-in of the DSRIP transformation
- Developing Employee Engagement Plans that help align partners and facilitate adoption of the changes

Linking Training to Performance

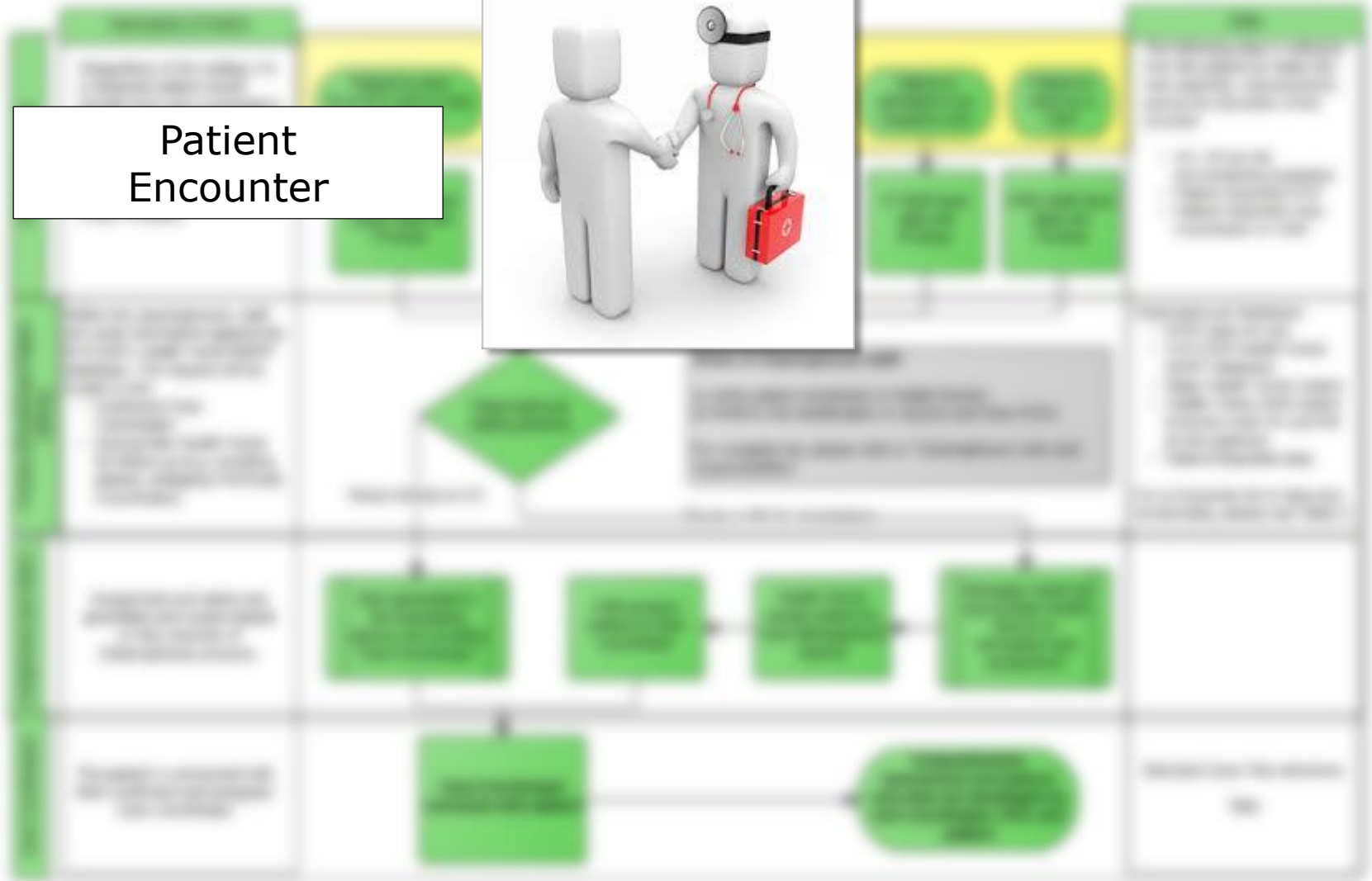
- Partners will be involved in designing project workflows & workforce competencies needed for the Six HEDIS® Hybrid Measures
- Evidence-based Guidelines and Processes are being integrated into the standards of care for each project
- Target training and development programs in alignment with both specific job category needs and DSRIP business imperatives

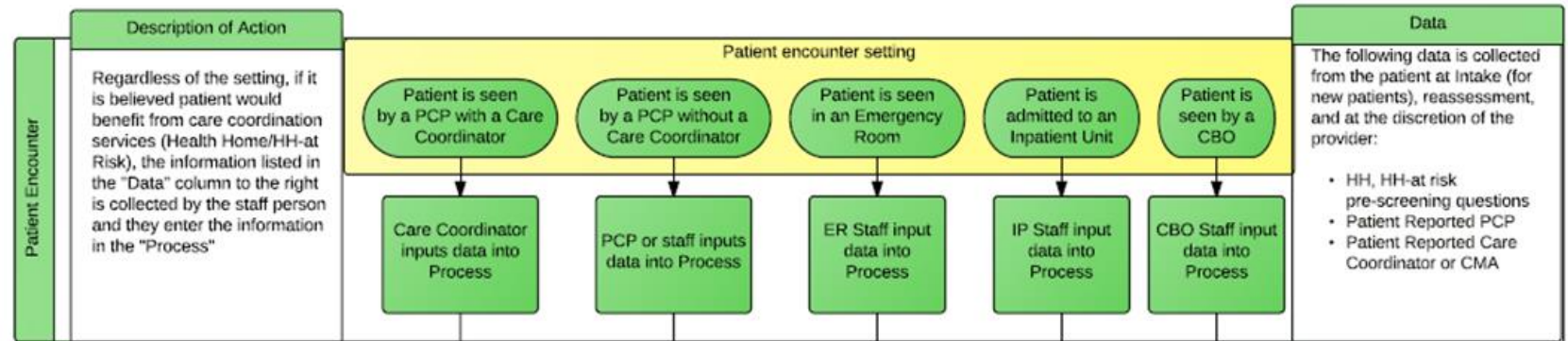


- Improve Synergy between Projects and Organizational Work Streams
- All 10 Projects Must Structure and Deploy Care Coordination Services
- The Care Coordination Cross-Functional Workgroup Responsible for Developing Care Coordination Standards and Protocols

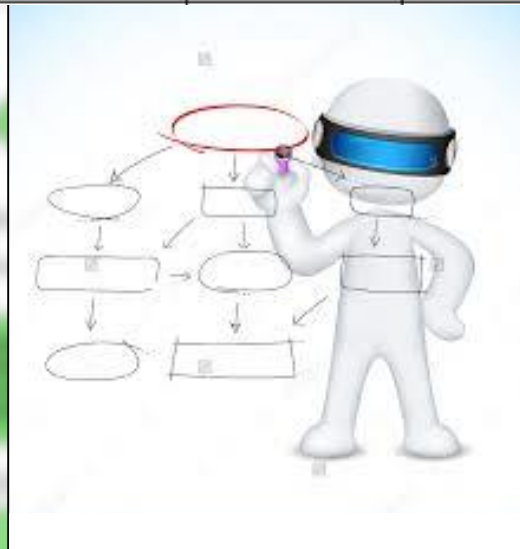
- Improve Synergy between Projects and Organizational Work Streams
- All 10 Projects Must Structure and Deploy Care Coordination Services
- The Care Coordination Cross-Functional Workgroup Responsible for Developing Care Coordination Standards and Protocols
- Four-Step Process

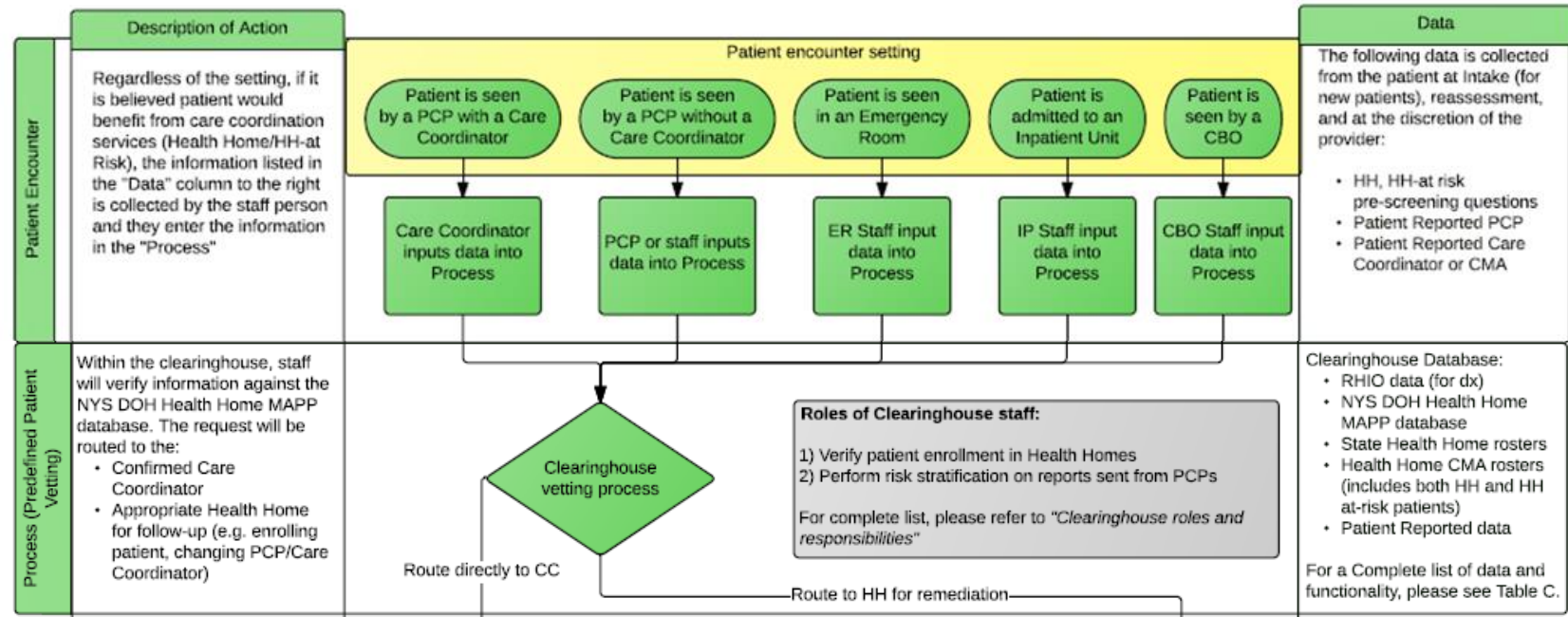
Patient Encounter





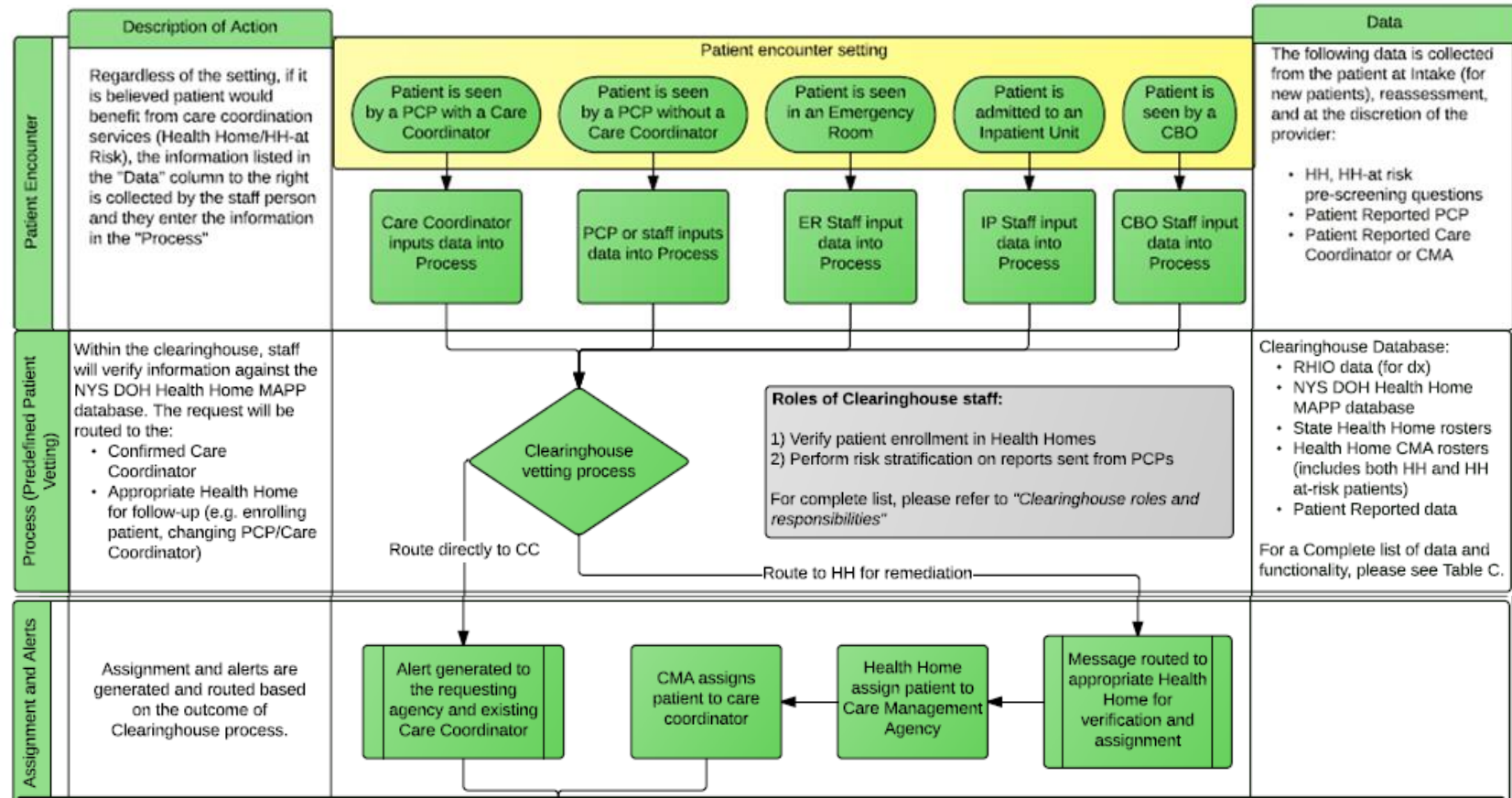
Process Patient





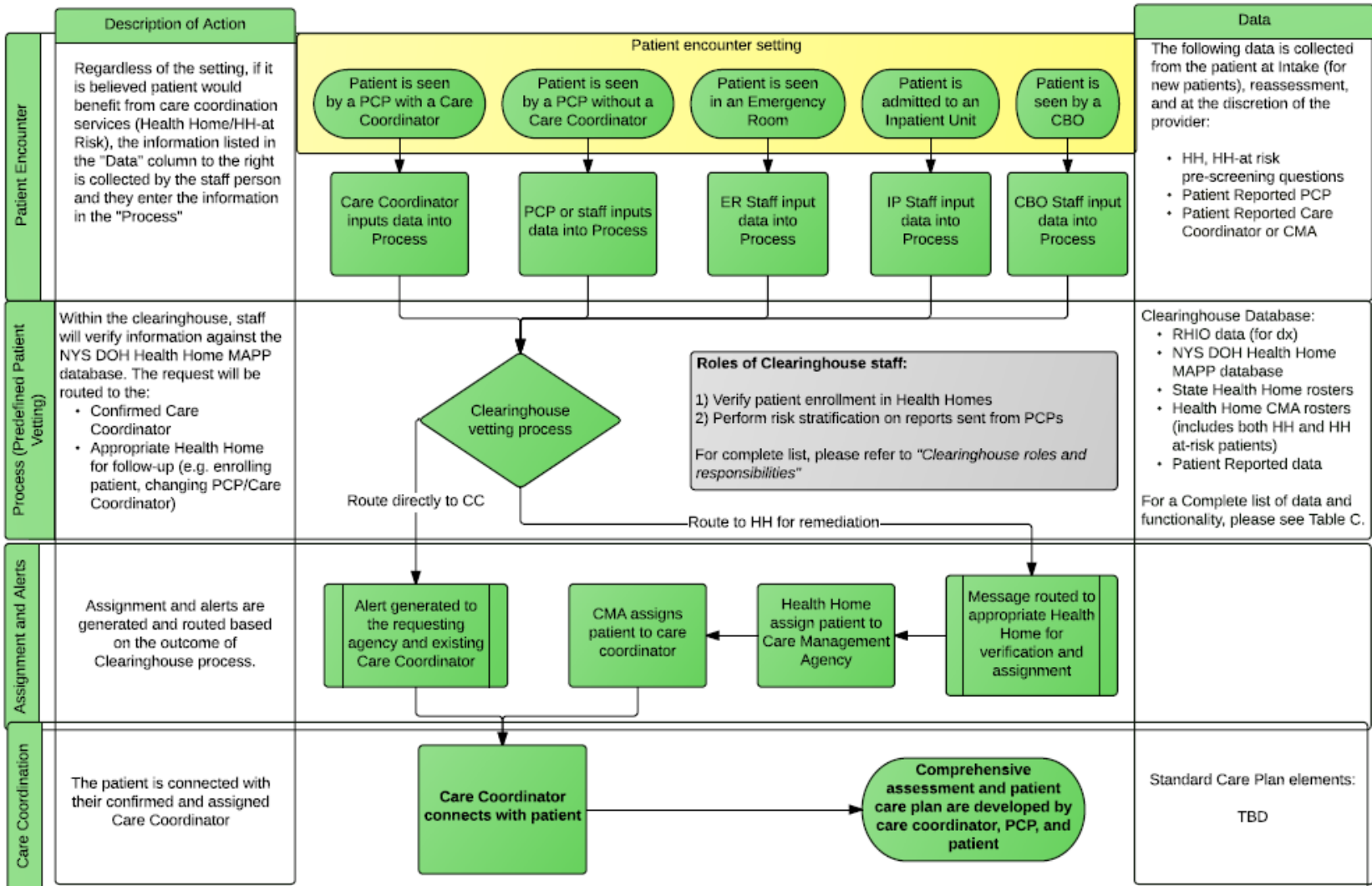
Assignment and Alert



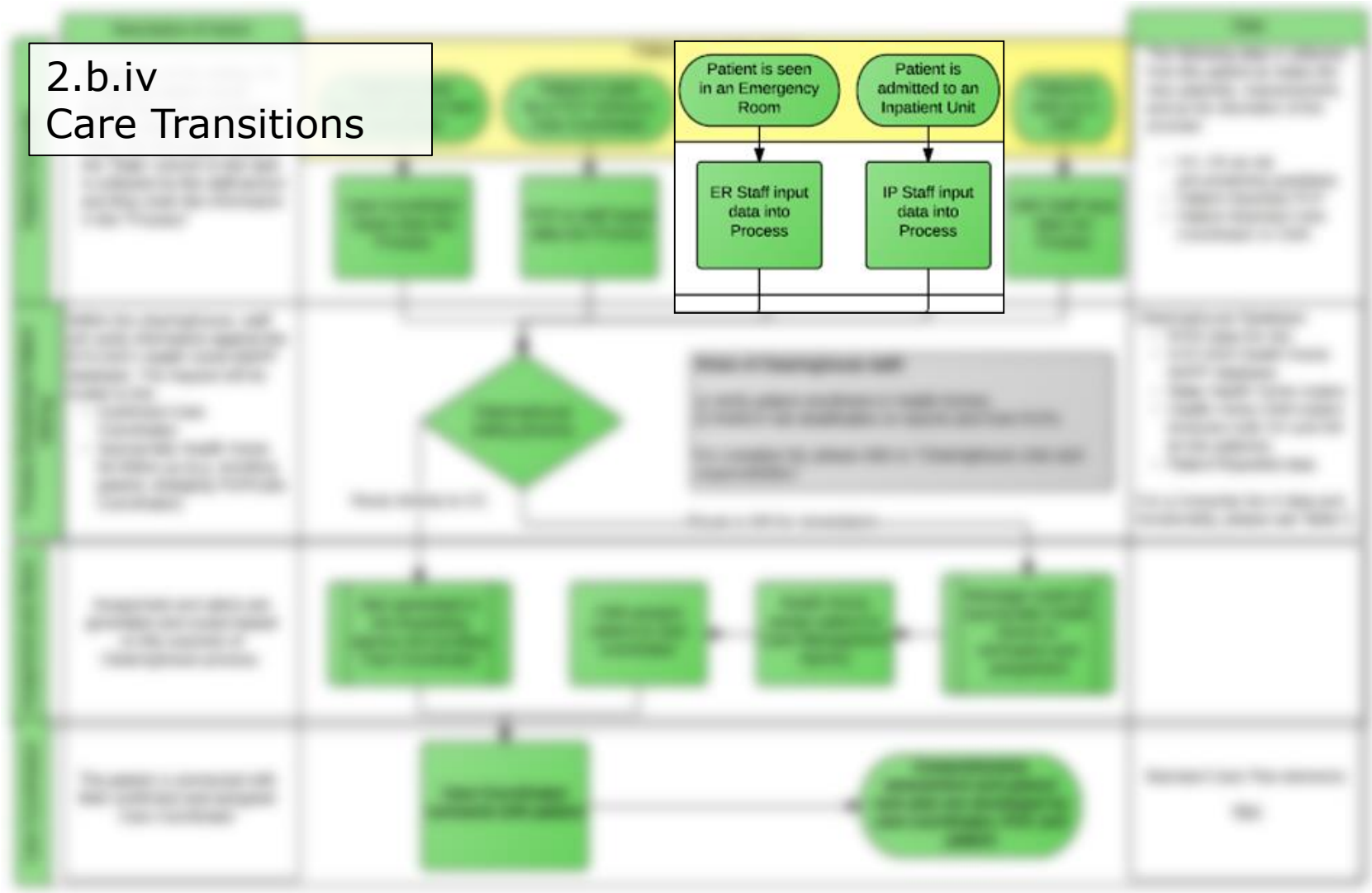


Care Coordination



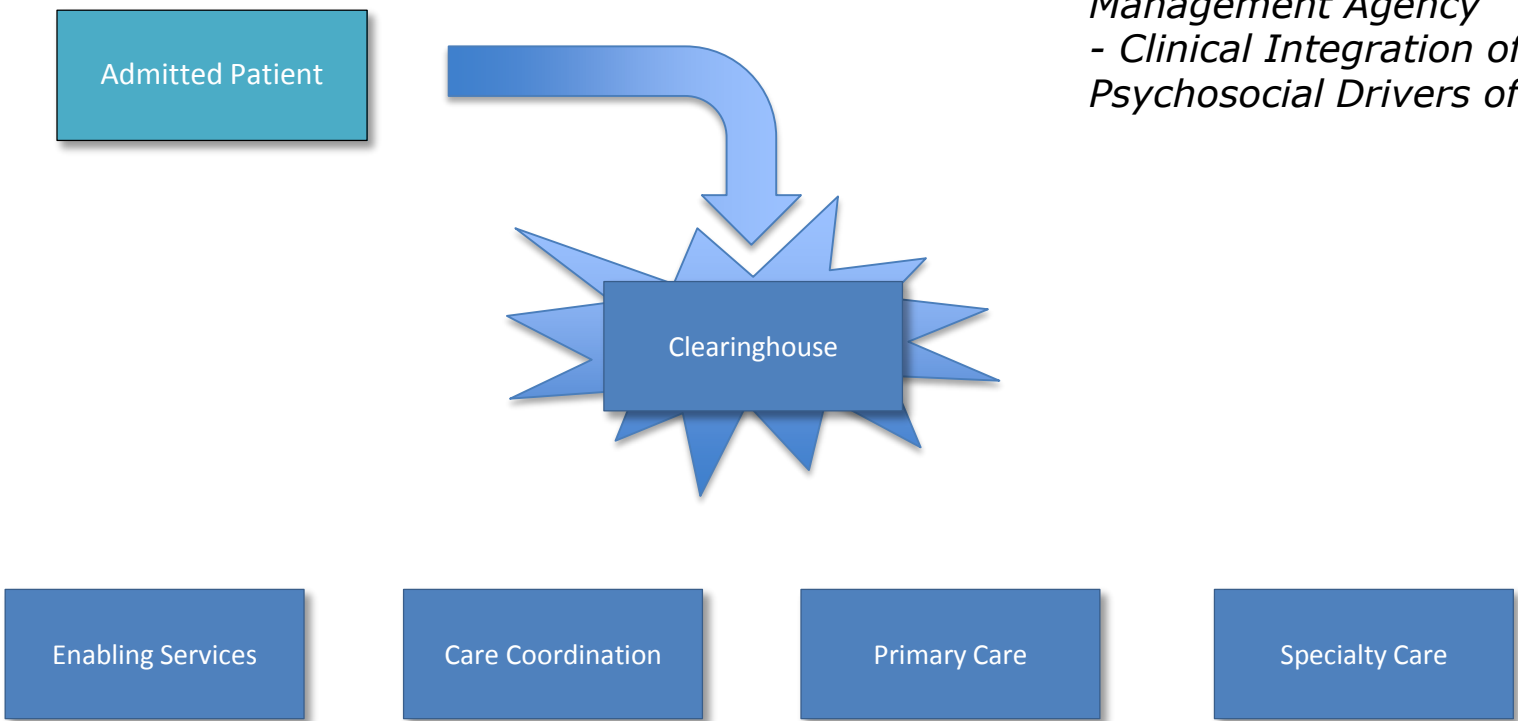


2.b.iv Care Transitions



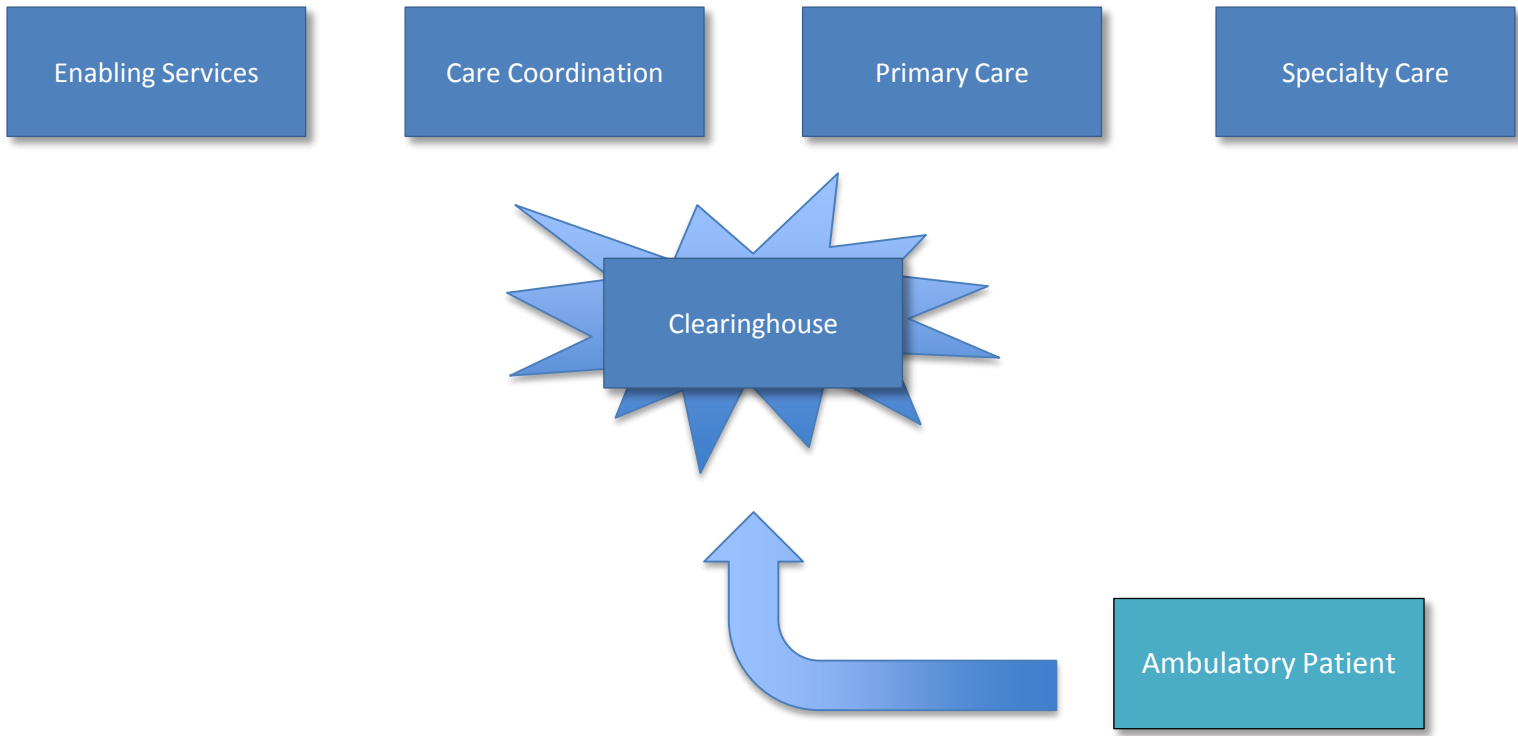
Clearinghouse Functionality

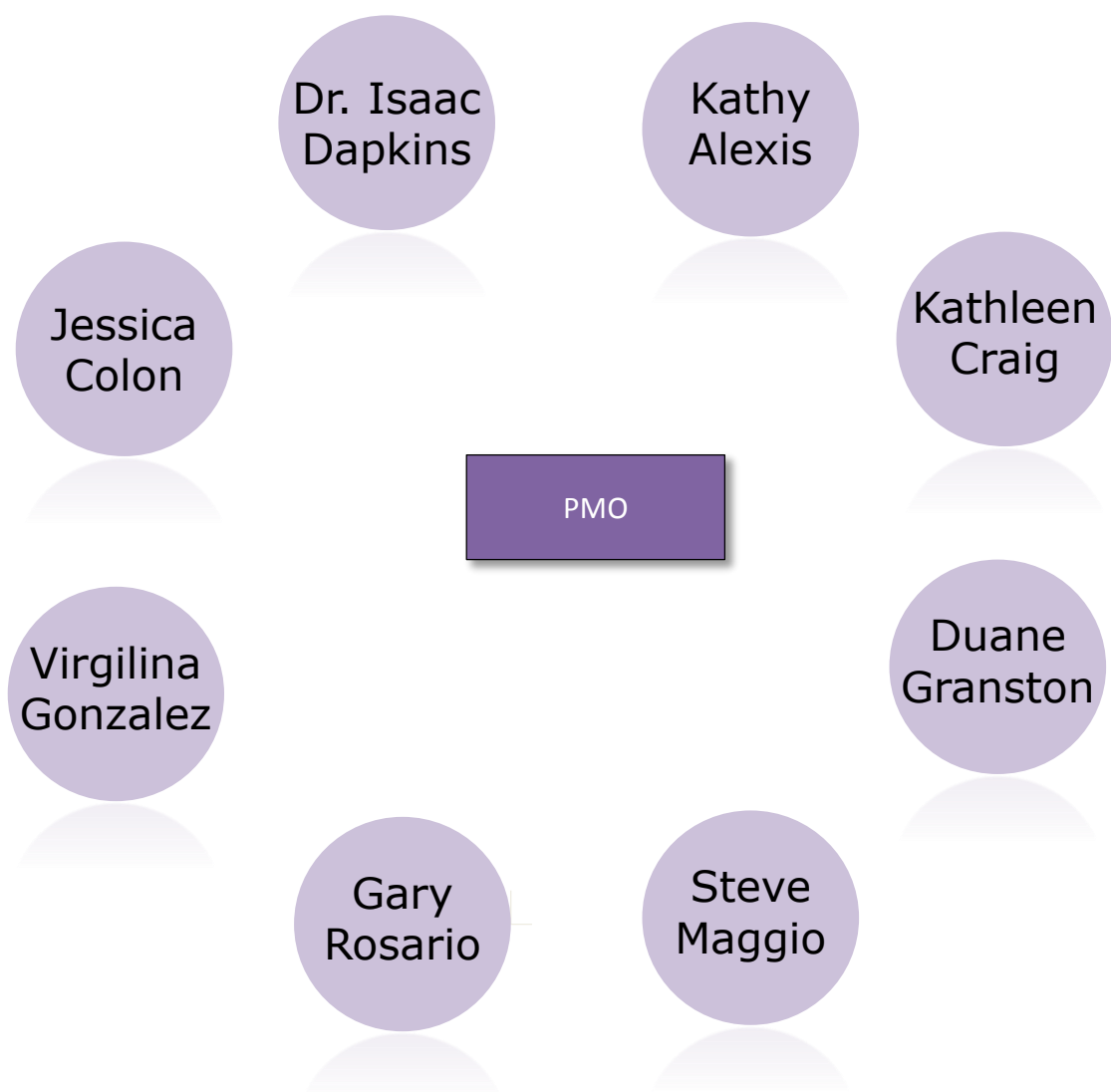
- Risk Stratification
- Continuity by Provider/Care Management Agency
- Clinical Integration of Psychosocial Drivers of Health



Clearinghouse Functionality

- RHIO Data
- Outcomes Driven
- 7-Day appointments
- HEDIS Measures
- Engagement Metrics







Bronx-Lebanon Hospital Center PPS, LLC