



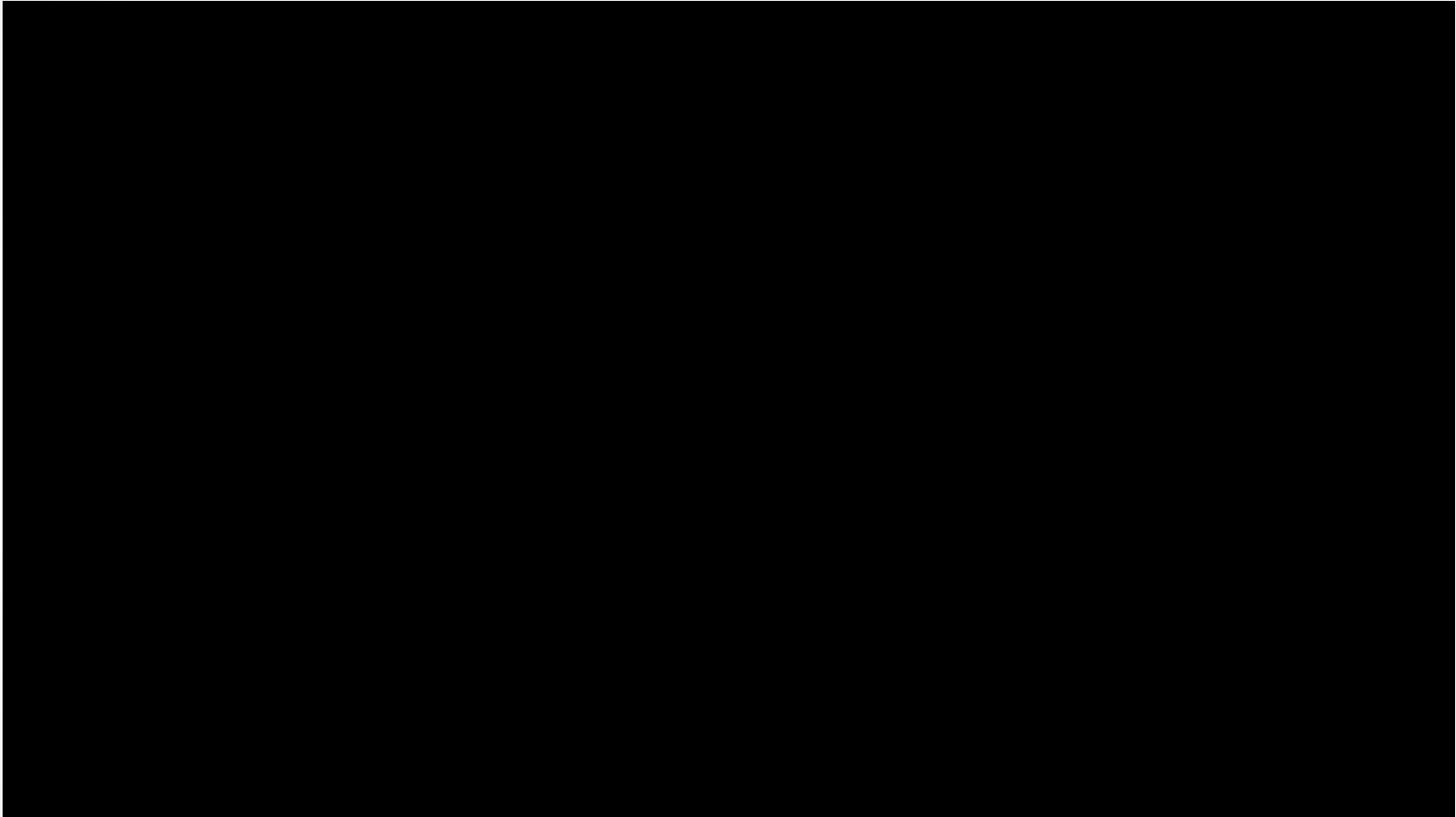
DSRIP Project Approval and Oversight Panel

WMCHealth PPS

June Keenan, Executive Director, Center for Regional Healthcare Innovation, WMCHealth PPS
Dr. Jessie Sullivan, Medical Director, Center for Regional Healthcare Innovation, WMCHealth PPS

February 1st 2017

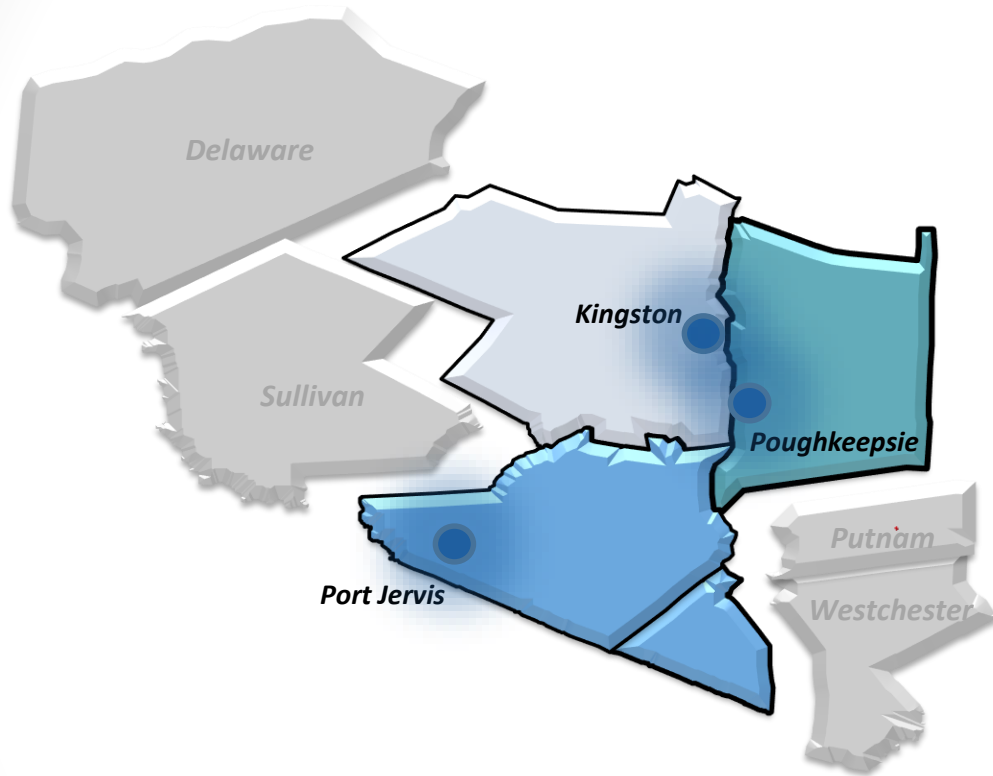
VIDEO



Working with Partners to Build and Sustain Healthy Communities

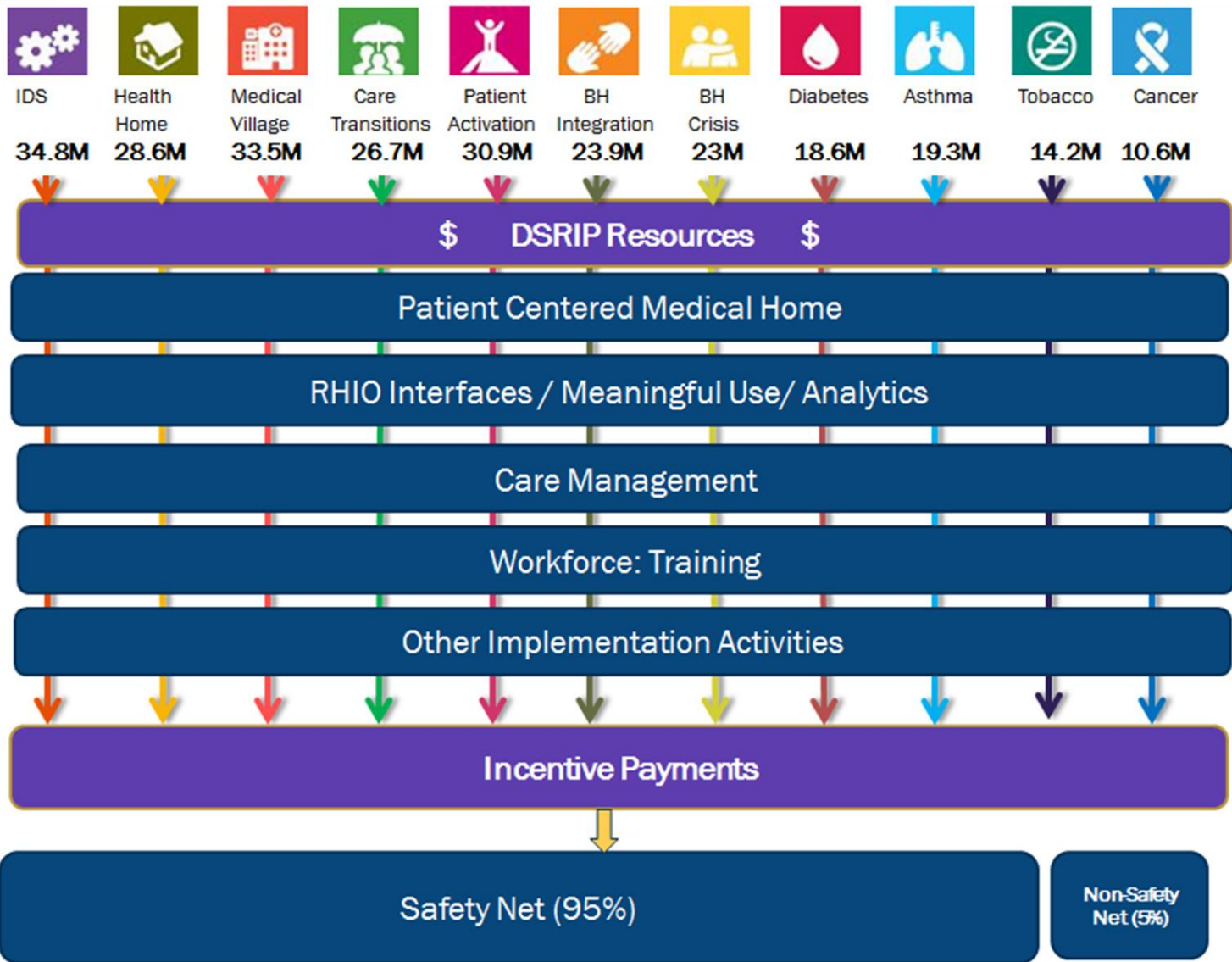


Strengthening Local Communities to Create Better Health Outcomes



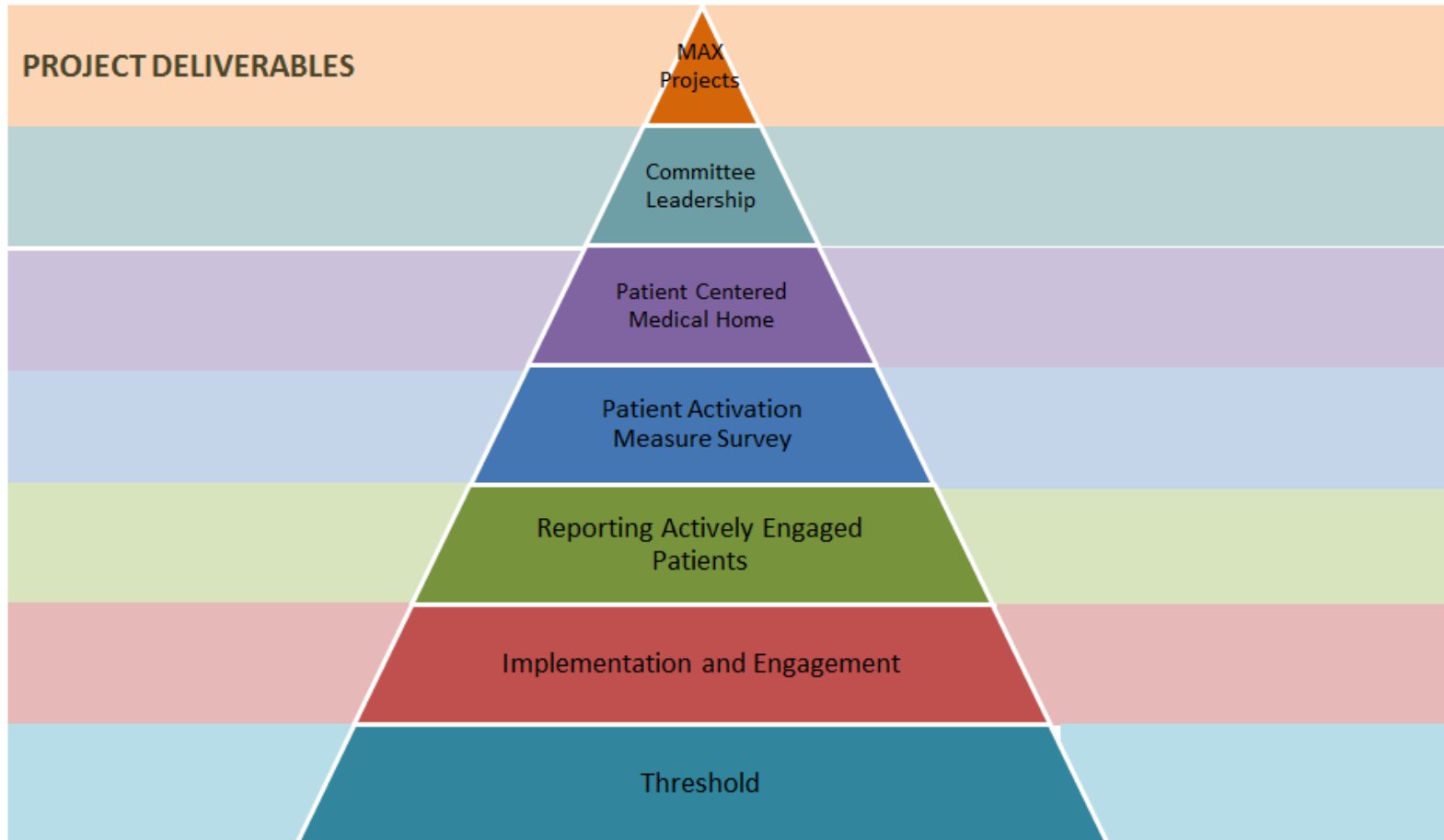
- In-depth environmental assessments in three high priority communities: Kingston, Port Jervis, and Poughkeepsie
- On-the-ground assessments; stakeholder interviews, attendance at local meetings and events, data review
- Identify community-specific factors and opportunities for economic development and community transformation

Foundation for Transformation



Provider Contracting as of January 2017

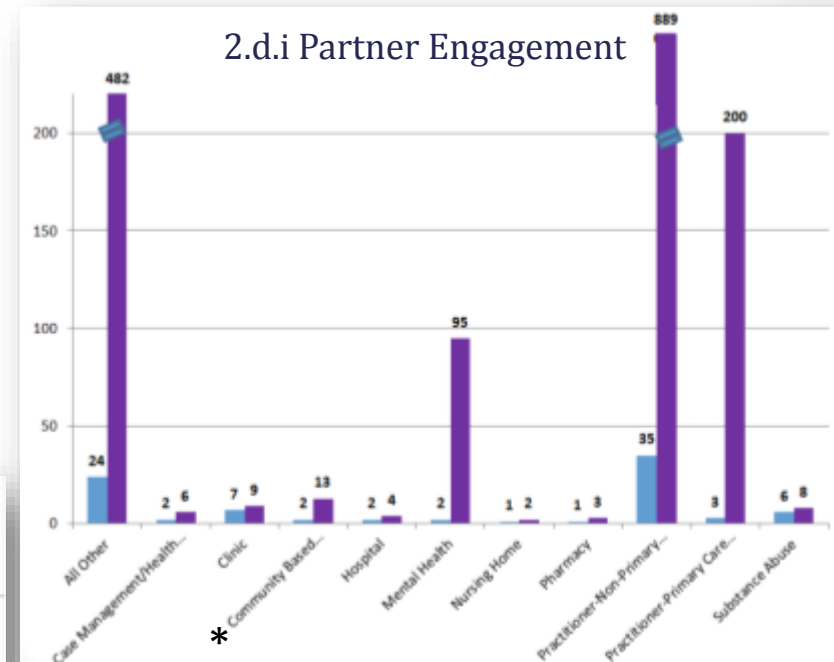
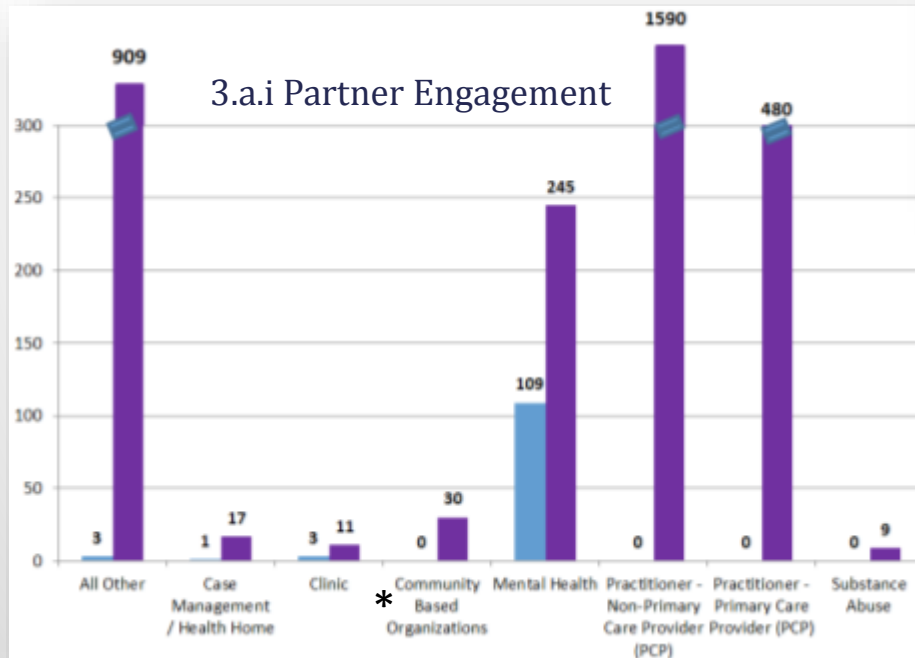
170 Contracted Partners



Independent Assessor Recommendations

Project 2.d.i Patient Activation

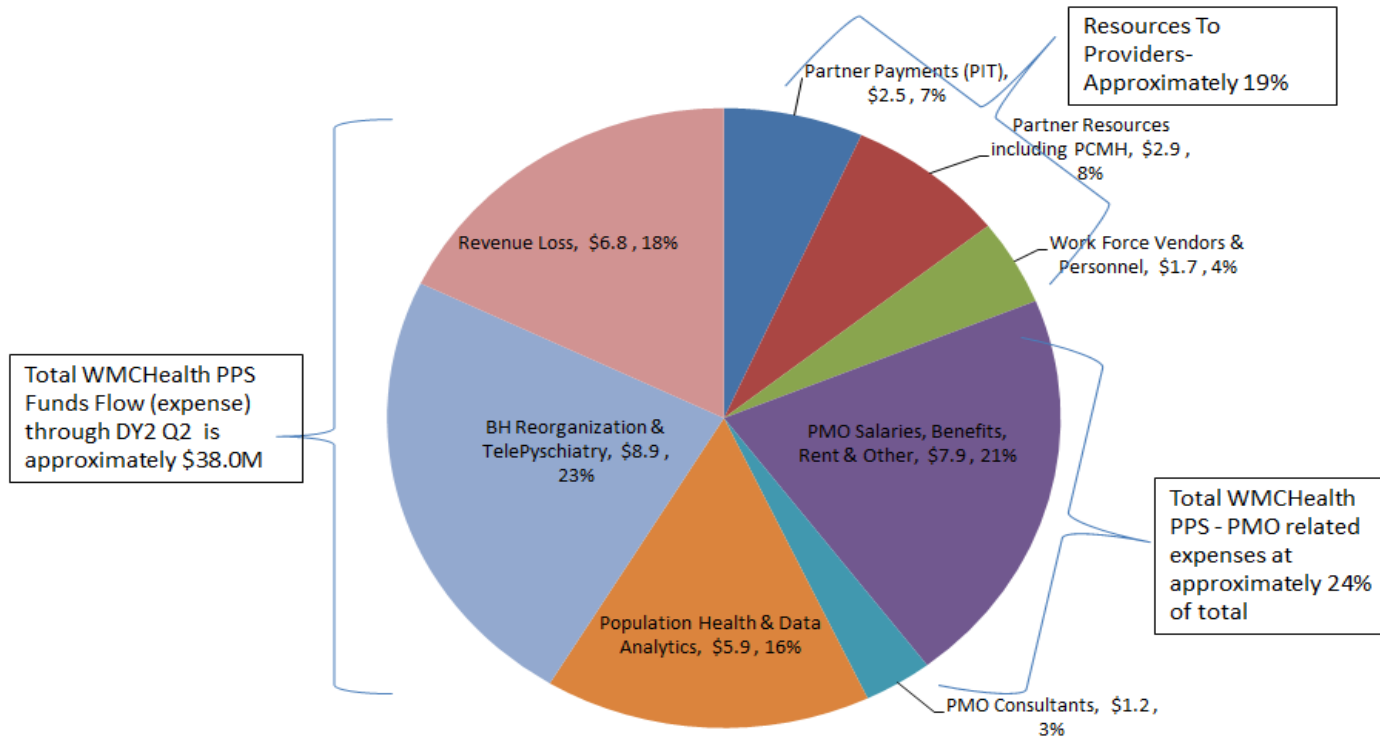
“Contracts and training to administer patient activation surveys enable community based partners to better connect underserved patients and clients with healthcare coverage and primary care”



- Engaged Amount Per Mid-Point Assessment Total
- Engaged Amount as of DY2Q3 Total

*Count of CBO participation was manual and not reflected in PIT

WMCHHealth PPS Funds Flow DY2 Q2



Note: Funds Flow data reported through DY2 Q2, totals approximately \$38.0M and similarly the breakdown of expenses within the Funds Flow categories reflect Funds Flowed to the PMO through DY2 Q2. All dollars (\$M) and percentages (%) rounded.

Implementation in Naturally Occurring Medical Neighborhoods



Middletown
Orange County



Kingston
Ulster County



Poughkeepsie
Dutchess County



Port Jervis
Orange County



**Performing Provider
System (PPS)**
Westchester Medical Center Health Network



**Northern
Westchester**



Suffern
Rockland County



**Southern
Westchester**



**Performing Provider
System (PPS)**
Westchester Medical Center Health Network

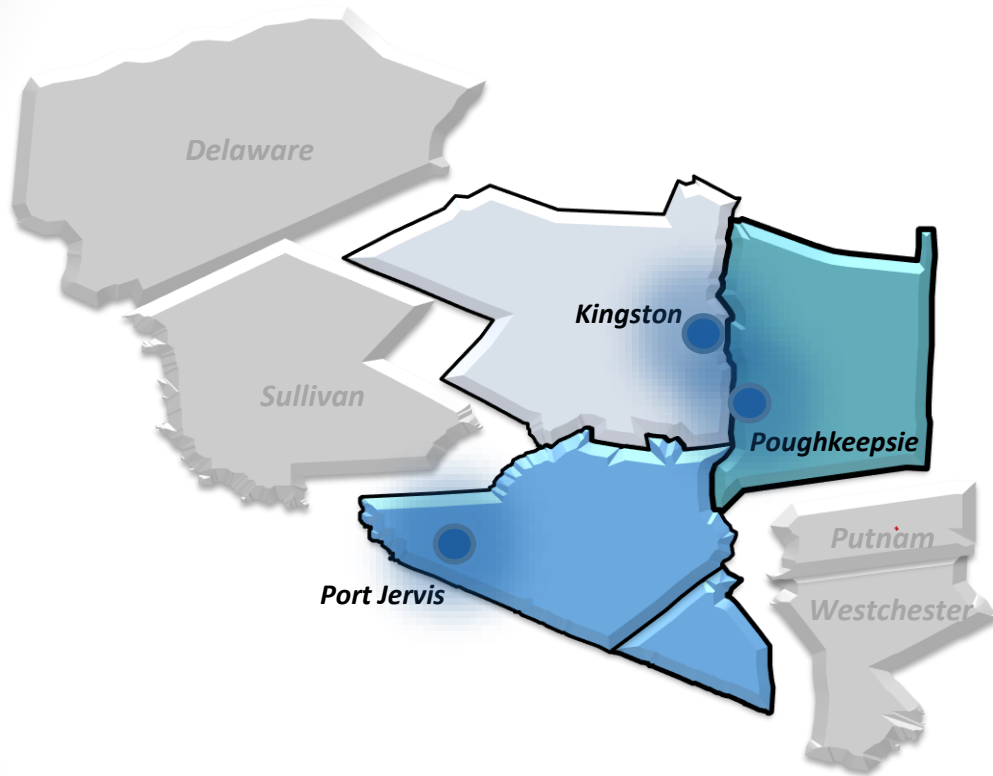
DSRIP Investment

Building the Infrastructure for Sustainable Transformation



Infrastructure Investment in Workforce, Population Health & Data Analytics, and Project Management Office Represents \$16 Million or 41% of Funds Flow through DY2Q2

Our Success will be Measured in:



**Better Patient
Outcomes**

**Better Provider
Experience**

**Healthier
Communities**

Our Vision for Building and Sustaining Healthy Communities

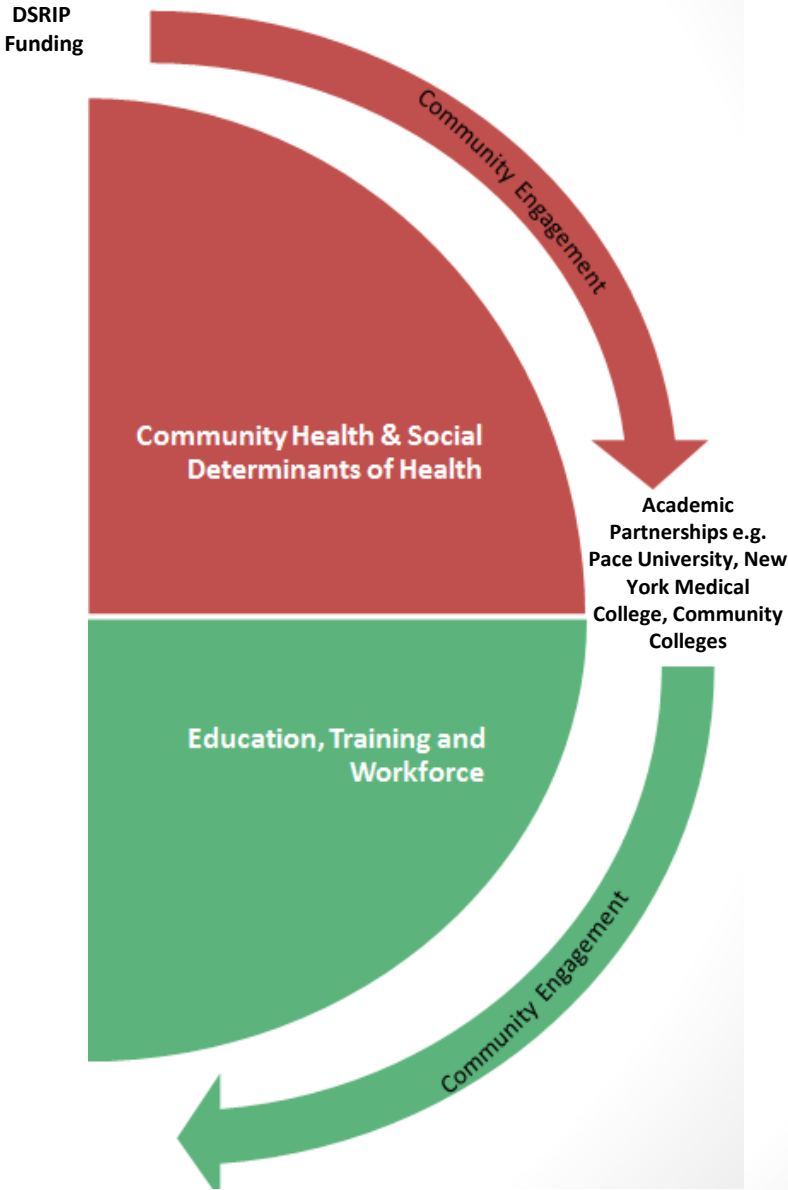
Collaboration Across Community Assets

DSRIP
Funding



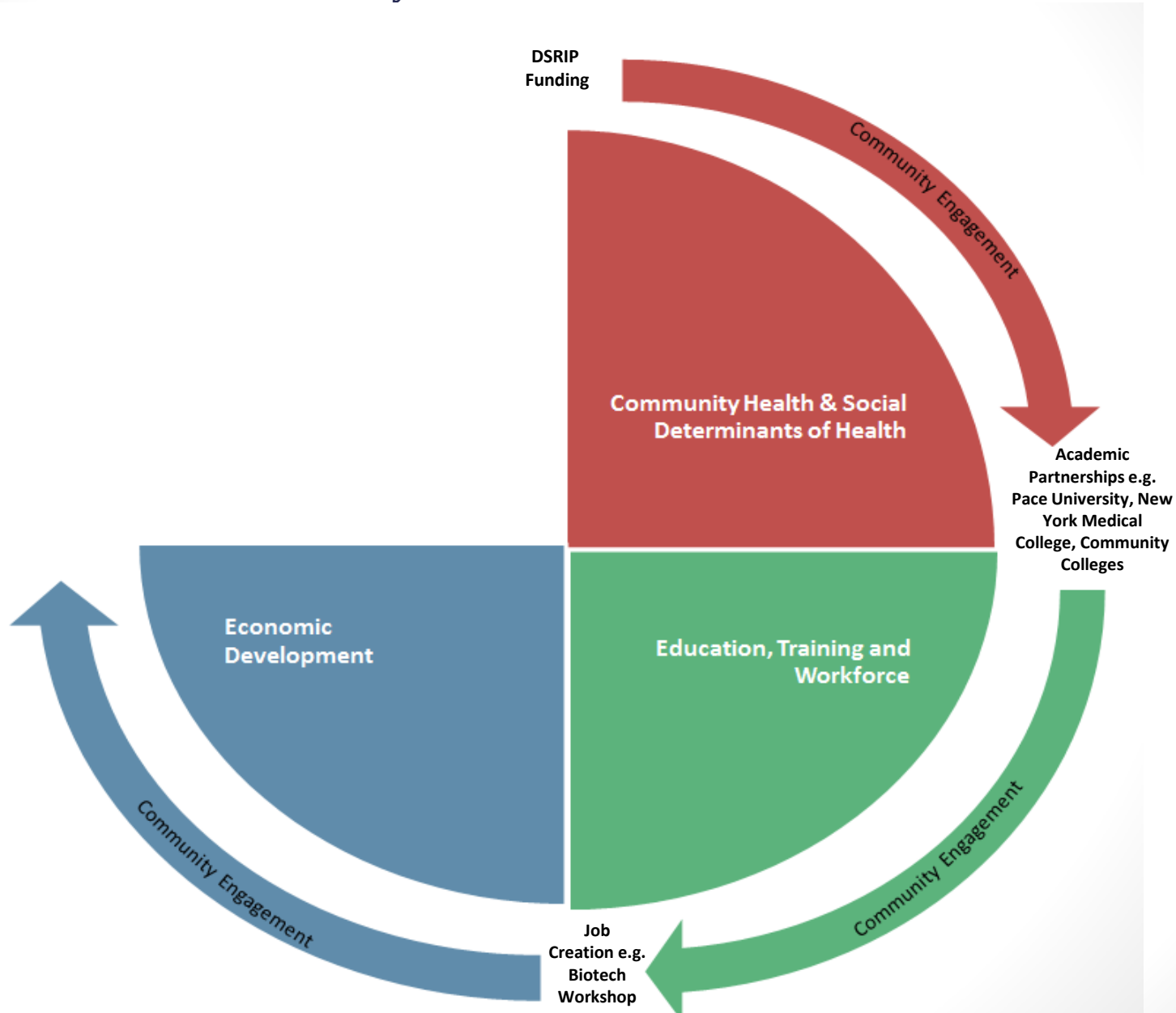
Our Vision for Building and Sustaining Healthy Communities

Collaboration Across Community Assets



Our Vision for Building and Sustaining Healthy Communities

Collaboration Across Community Assets



Our Vision for Building and Sustaining Healthy Communities

Collaboration Across Community Assets



END

Appendix

- Quarterly Project Performance Roadmap (QPPR) Documentation (Slides 18-19)
- WMCHHealth PPS Contracted Partners (Slides 20-25)
- List of Workforce Trainings Completed to Date (Slide 26-27)
- List of Community Engagement Activities to Date (Slide 28)
- List of Organizations Conducting PAM Surveys (Slide 29)
- Patient Centered Medical Home Sites (Slide 30)
- PPS Governance Organizational Chart (Slide 31)
- Anchor Institution Definition (Slide 32)

Quarterly Project Performance Roadmap (QPPR)

Supporting Report Form (SRF)

QUARTERLY PARTICIPANT PERFORMANCE ROADMAP (QPPR)
SUPPORTING REPORT FORM (SRF_V_1.0)



DSRIP Year/Quarter	DY2 /Q2	Quarter Start/End Dates	July 1, 2016 – Sept 30, 2016
--------------------	---------	-------------------------	------------------------------

PART II DY2/Q2 DOMAIN 1 PARTICIPANT PERFORMANCE REQUIREMENTS

INSTRUCTIONS

Listed below are DSRIP project deliverables required for March 2017 completion. Please denote your progress in achieving these deliverables and submit specific documentation as necessary to evidence your successful completion of any deliverables. There is also a comment box provided at the end for you to describe any activity or work by your organization related to DSRIP projects or work streams. In future Supporting Report Forms, additional project deliverables with later due dates will be highlighted.

Project Name	Project Milestone Deliverable	Description (Deliverable)	Documentation (IA)	Deadline	Task for Partner	Partner Role	Status
2.a.i Integrated Delivery System	M2D3	Regularly scheduled formal meetings are held to develop collaborative care practices and integrated service delivery.	Inventory of meeting schedules, agendas, minutes, and list of attendees at meeting pertaining to the development of collaborative care practices and integrated service delivery.	3/31/2017	Attend Medical Neighborhood Meetings and/or Primary Care Work Group and/or Project Advisory Quality Committee (PAQC) Meetings	Primary: <input type="checkbox"/> PCP <input type="checkbox"/> Specialty <input type="checkbox"/> Hospital <input type="checkbox"/> HH/CMA <input type="checkbox"/> SNF/HC <input type="checkbox"/> BH <input type="checkbox"/> CBP w PHI <input type="checkbox"/> CBP no PHI <input type="checkbox"/> Other	<input type="checkbox"/> Complete <input type="checkbox"/> On Track <input type="checkbox"/> Not Applicable <input type="checkbox"/> Need Help
2.a.i Integrated Delivery System	M3D1	Clinically Interoperable System is in place for all participating providers.	Process workflows demonstrating how Clinical Interoperability Systems shares data across all participating providers, including responsible parties at every stage.	3/31/2017	Sign participation agreement with HealthLink NY or other Qualified Entity (QE); OR Submit workflow or other documentation of how data is shared across provider settings; OR Participate in Medical Neighborhood development of clinical interoperability (e.g. attend <u>Clinical Interoperability</u> Workshop at Nov 3rd Summit.)	Primary: <input type="checkbox"/> PCP <input type="checkbox"/> Specialty <input type="checkbox"/> Hospital <input type="checkbox"/> HH/CMA <input type="checkbox"/> SNF/HC <input type="checkbox"/> BH As Applicable: <input type="checkbox"/> CBP w PHI <input type="checkbox"/> CBP no PHI -	<input type="checkbox"/> Complete <input type="checkbox"/> On Track <input type="checkbox"/> Not Applicable <input type="checkbox"/> Need Help

Project Checklists

Verbatim from NYS documents – this is what our PPS has been told to accomplish

Almost verbatim from NYS documents – the IA documentation that our PPS will have to submit

Typically March 31, 2017

What we need from our Partners

Project Name	Project Milestone Deliverable	Description Deliverable	Documentation (IA)	Deadline	Task for Partner	Partner Role	Status
2.a.i Integrated Delivery System	M2D3	Regularly scheduled formal meetings are held to develop collaborative care practices and integrated service delivery.	Inventory of meeting schedules, agendas, minutes, and list of attendees at meeting pertaining to the development of collaborative care practices and integrated service delivery.	3/31/2017	Attend Medical Neighborhood Meetings and/or Primary Care Work Group and/or Project Advisory Quality Committee (PAQC) Meetings	Primary: <input type="checkbox"/> PCP <input type="checkbox"/> Specialty <input type="checkbox"/> Hospital <input type="checkbox"/> HH/CMA <input type="checkbox"/> SNF/HC <input type="checkbox"/> BH <input type="checkbox"/> CBP w PHI <input type="checkbox"/> CBP no PHI <input type="checkbox"/> Other	<input type="checkbox"/> Complete <input type="checkbox"/> On Track <input type="checkbox"/> Not Applicable <input type="checkbox"/> Need Help

WMCHHealth PPS Contracted Partners: 170

Open Door Family Medical Center Inc.
Crystal Run Healthcare LLP
Mount Vernon Neighborhood Health Center
Boston Children's Health Physicians LLP
Institute For Family Health
Middletown Community Health Center
Cornerstone Family Healthcare
Westchester Medical Center
Bon Secours Charity Health System
Community Medical And Dental
Middletown Medical
Poughkeepsie Medical Group
Phelps Memorial Hospital Association
Northern Westchester Hospital Assoc.
Health Alliance Inc.
Ellenville Regional Hospital
Greater Hudson Valley Health System
Advanced Physician Services Pc
Westchester Medical Center Reg. Phys.
Amarjit S Gill Med Services, P.C.
Fallsburg Pediatrics
Llobet Medical Group
Bridge Street Family Medicine
Elite Health Care
Liberty Pediatrics
Haverstraw Pediatrics
Gergely Pediatrics
Gary T. Midelton, Physician, P.C.
Hillcrest Medical Associates
Hillside Health Medical Practice, P.C.
Planned Parenthood Of Mid HV
Planned Parenthood Hudson Peconic Inc.
Hurley Avenue Family Medicine, PLLC

Najia A. Zaidi, MD
Fishkill Medical Associates
The Center For Discovery
Access: Supports For Living, Inc.
Rehabilitation Support Services Inc.
Mental Health Assoc In Ulster County
Mental Health America Of Dutchess County
Astor Services For Children & Families
Mental Health Association Of Westchester
Mental Health Assoc In Orange County
Honorehg Inc.
Putnam Family & Community Services Inc.
County Of Orange
Sullivan Cnty Department Of Community Services
Lexington Center For Recovery
Family Services Of Westchester Inc.
Jewish Board Of Family & Childrens Svcs
Human Development Svcs Of Westchester
Catholic Charities Community Services Of Orange County
Westchester Jewish Community Services
Arms Acres Inc.
Rockland Psychiatric Center
Guidance Center Of Westchester Inc.
Hudson Valley Mental Health
Midhudson Addiction Recovery Center
CBHS
Saint Dominic's Home
St Christophers Inn Inc.
Rockland Paramedics
Mental Health Association Of Rockland County, Inc.
Jawonio Inc.
Gateway Community Industries Inc.

Family Of Woodstock, Inc.
Restorative Management Corp.
Loeb House Inc.
Independent Living Inc.
People Projects To Empower & Organize
NYSARC Inc. Westchester County Chapter
Ulster Greene Counties Chapter NYSARC
NYSARC Inc. Rockland County Chapter
NYSARC Inc. Westchester County Chapter
Ulster Greene Counties Chapter NYSARC In
NYSARC Inc. Rockland County Chapter
NYSARC Inc. Westchester County Chapter
Ulster Greene Counties Chapter NYSARC In
NYSARC Inc. Rockland County Chapter
Westchester Institute For Human
Development
NYSARC, Inc. Dutchess County Chapter
Abilities First, Inc.
United Cerebral Palsy Assoc. Of Putnam &
Southern Dutchess
Cerebral Palsy Of Westchester, Inc.
Opengate Inc.
United Cerebral Palsy Of Ulster County Inc.
Ability Beyond Disability
Orange County Cerebral Palsy Assoc
Hudson Valley Community Services Inc.
Bambini
Hudson View Care Center Inc.
Children's Rehabilitation Center
Andrus

Abbott House
Samaritan Village
CHOICE Of New Rochelle, Inc.
Ramapo Manor
The Assoc. For Mentally Ill Children Of
Westchester
Jewish Child Care Association
Sans Souci Rehab
Blythedale Children's Hospital
St. Patrick's Home
Arcwell
Dominican Sisters
Hamaspik Of Orange County
Hawthorne Foundation Inc.
Hudson Health Plan (WCAP)
Northern Rivers
Lifespire Inc.
Hamaspik Of Rockland County
Green Chimneys Children Services
Maranatha Human Services
New Horizons Resources
Leake And Watts Services Inc.
In Flight Inc.
Keli House Community Services Inc.
NYSARC Inc., Sullivan County Chapter
Liberty Resources, Inc.
Midhudson Association For Person's With
Disabilities, Inc.
Visiting Nurse Services Of New York
Yedei Chesed

Contracted Community Based Organizations

Family Service Society of Yonkers
 Family of Woodstock, Inc.
 Caring for Homeless of Peekskill, Inc.
 Student Assistance Services Corporation
 American Lung Association of the Northeast
 Children's Health & Research Foundation, Inc./Lower Hudson Valley Perinatal Network
 Natl Alliance on Mental Illness of Rockland
 Hawthorne Foundation Inc.
 Family Ties of Westchester Inc.
 National Council on Alcoholism & other Drug Dependencies/Putnam
 New Alternatives for Children
 New York Legal Assistance group - Legalhealth
 Family Services Inc.
 Lifting Up Westchester
 Westchester Independent Living Center, Inc.
 Hope Community Services
 Community Resource Center
 Food Bank for Westchester
 Hudson Valley Community Services Inc.
 People Projects to Empower & Organize
 Loeb House Inc.
 Mental Health Association in Orange County, Inc.
 Search for Change Inc.
 New Horizons Resources
 Cluster Inc.
 In flight Inc.
 NYSARC Inc. Sullivan County Chapter
 Human Development Services of Westchester
 Independent Living Inc.
 Saint Dominic's home
 C.A.R.C. Keon center
 Cardinal McCloskey School & Home for Children
 Community Based Services Inc.
 Keli House Community Services Inc.

Leake and Watts Services Inc.
 Maranatha Human Services
 NYSARC Inc. Orange County Chapter
 Cerebral Palsy of Westchester Inc.
 Hudson Information Technology for Community Health, Inc.
 Addicts Rehabilitation Center Fund Inc.
 Jewish Family Service of Orange County
 Resource Center for Accessible Living, Inc.
 Mental Health Association in Putnam County Inc.
 Rockland Independent Living center
 Yedei Chesed
 United Cerebral Palsy Assoc. Of Putnam & Southern Dutchess
 Neighbors Link
 Berkshire Farm
 New Hope Community
 Green Chimneys Children's Services Inc.
 Mental Health Association of Westchester
 Lexington Center for Recovery
 Access: Supports for Living, Inc.
 Gateway Community Industries Inc.
 Catholic Charities Community Services of Orange and Sullivan
 Honorehg Inc.
 Mental Health America of Dutchess county
 Mental Health Association in Ulster County Inc.
 Mental health association of Rockland county, Inc.
 Putnam family & Community Services Inc.
 Astor services for children & families
 Jawonio Inc.
 Rehabilitation support services Inc.
 Restorative management corp.
 St Christopher's Inn Inc.
 Westchester Jewish community services
 Maternal Infant Services Network

Hudson Valley Mental health Inc.
 The Children's Village
 Ulster Greene counties chapter NYSARC in
 Guidance center of Westchester Inc.
 Andrus
 Bikur Cholim Inc.
 Family Services of Westchester Inc.
 Jewish Board of Family and Children's Services
 NYSARC Inc. Dutchess county chapter
 Abbott House
 Arms Acres Inc.
 Lifespire Inc.
 The Center for Discovery
 Mid-Hudson addiction recovery centers, Inc.
 Anderson Center Services, Inc.
 Hamaspik of Rockland county Inc.
 NYSARC Inc. Westchester county chapter
 Rockland Psychiatric Center
 Westchester Institute for Human Development
 Chemlu Developmental Disabilities Center, Inc.
 Hamaspik of Orange County
 Cornerstone of Rhinebeck
 Inspire
 NYSARC Inc. Rockland county chapter
 OPWDD - Taconic and Hudson valley region #4
 DDSOO
 Regional Economic community action program Inc.
 Richard c. Ward addiction treatment center
 Step one - child & family guidance center
 addiction services, Inc.
 The Alcoholism and Drug Abuse Council of Orange County
 United Cerebral Palsy of Ulster County Inc.
 Volunteer Counseling Service of Rockland County, Inc.
 Phoenix house

Contracts with Federally Qualified Health Centers , Medical Groups and Hospitals

- Open Door Family Medical Center Inc.
- Middletown Medical
- Crystal Run Healthcare LLP
- Poughkeepsie Medical Group
- Mount Vernon Neighborhood Health Center
- Phelps Memorial Hospital Association
- Boston Children's Health Physicians LLP
- Northern Westchester Hospital Association
- Institute for Family Health
- Health Alliance
- Middletown Community Health Center Inc.
- Ellenville Regional Hospital
- Cornerstone Family Healthcare
- Greater Hudson Valley Health System
- Westchester Medical Center
- Advanced Physician Services PC
- Bon Secours Charity Health System
- Westchester Medical Center PHYS
- Community Medical and Dental

WMCHHealth PPS Contracts with Primary Care Providers of All Sizes

- Amarjit S Gill Med Services, P.C.
- Gary T. Middleton, Physician, P.C.
- Fallsburg Pediatrics
- Hillcrest Medical Associates
- Lobet Medical Group
- Hillside Health Medical Practice, P.C.
- Bridge Street Family Medicine
- Planned Parenthood Hudson Peconic Inc.
- Elite Health Care
- Hurley Avenue Family Medicine, PLLC
- Liberty Pediatrics
- Najia A. Zaidi, MD
- Haverstraw Pediatrics
- Fishkill Medical Associates
- Gergely Pediatrics
- The Center for Discovery

Contracted Behavioral Health Providers, Health Homes, and Care Management Agencies

- Access: Supports for Living Inc.
- Hudson Valley Mental Health
- Rehabilitation Support Services
- Mid-Hudson Addiction Recovery Center
- Mental Health Assoc. in Ulster County
- CBHS
- Mental Health America of Dutchess County
- Saint Dominics Home
- Astor Services for Children & Families
- St. Christopher's Inn Inc.
- Mental Health Association of Westchester
- Rockland Paramedics
- Mental Health Assoc. In Orange
- Mental Health Association of Rockland County, Inc.
- HONOREHG INC
- Jawonio Inc.
- Putnam Family & Community Services
- Gateway Community Industries Inc.
- County of Orange
- Westchester County Department of Community Mental Health
- Sullivan County Department of Community Services
- BIKUR CHOLIM INC
- Lexington Center for Recovery
- Dutchess County Department of Behavioral and Community Health
- Family Services of Westchester Inc.
- County of Rockland
- Jewish Board of Family & Children's Services
- The Children's Village
- Human Development Services of Westchester
- Search for Change Inc.
- Catholic Charities Community Services of Orange County
- Cluster, Inc.
- Westchester Jewish Community Services
- Family Services Society of Yonkers
- Arms Acres Inc.
- Family of Woodstock, Inc.
- Rockland Psychiatric Center
- Restorative Management Corp.
- Guidance Center of Westchester Inc.
- Loeb House Inc.
- Independent Living Inc.
- People Projects To Empower & Organize (PEOPLE)

Contracts with Additional Providers

- NYSARC Inc. Westchester County Chapter
- Jewish Child Care Association
- Ulster Green Counties Chapter NYSARC Inc.
- Sans Souci Rehab
- NYSARC Inc, Rockland County Chapter
- Blythedale Children's Hospital
- Westchester Institute for Human Development
- Arcwell
- NYSARC, INC. Dutchess County Chapter
- Planned Parenthood of Mid Hudson Valley
- Abilities First, Inc.
- Dominican Sisters
- United Cerebral Palsy Assoc. of Putnam & Southern Dutchess
- Hamaspik of Orange County
- Cerebral Palsy of Westchester, Inc.
- Hawthorne Foundation Inc
- Opengate Inc.
- Hudson Health Plan (WCAP)
- United Cerebral Palsy of Ulster County Inc.
- Northern Rivers
- Ability Beyond Disability
- LifeSpire Inc.
- Orange County Cerebral Palsy Assoc.
- Hamaspik of Rockland County
- Hudson Valley Community Services
- Green Chimneys Children Services
- Bambini Pediatrics P.C.
- Maranatha Human Services
- Hudon View Care Center, Inc.
- New Horizons Resources
- Children's Rehabilitation Center
- Leake and Watts Services Inc.
- ANDRUS
- In Flight Inc.
- Abbot House
- Keli House Community Services Inc.
- Samaritan Village
- NYSARC Inc, Sullivan County Chapter
- CHOICE of New Rochelle, Inc.
- Liberty Resources, Inc.
- Ramapo Manor
- Mid-Hudson Association for Person's with Disabilities, Inc.
- The Association for Mentally Ill Children of Westchester, Inc.
- Visiting Nurse Services of New York
- Yedei Chesed

Workforce Trainings Completed to Date

Education & Trainings to Date	Date
1. Achieving Equitable Health Care Outcomes E course. Ongoing. Open enrollment. Cultural Competency and Health Literacy Launched in DY2Q4 March 2016.	Ongoing
2. Diabetes Peer to Peer Mentoring Services-Inquisit Health	Ongoing
3. Lung Force Expo March 22, 2017	3/22/2017
4. Health Literacy Training	3/1/2017
5. Heritage to Health CEU E Course	3/1/2017
6. Freedom From Smoking American Lung Association of the Northeast Facilitator trainings	3/1/2017
7. Port Jervis Medical Neighborhood Meeting 1 Feb 9 2017	02/09/2017
8. How to use coverage training	2/1/2017
9. Dutchess County DLA20 Training and Train the Trainer	2/1/2017
10. Poughkeepsie Medical Neighborhood Meeting 2 Jan 31 2017	01/31/2017
11. Leadership Learning Collaborative Immersion Course	01/18/2017 & 01/19/2017
12. Kingston Medical Neighborhood Meeting 1 Jan, 12 2017	01/12/2017
13. Orange County CIT. Crisis Intervention Training.	01/01/2017- 12/31/17
14. Motivational Interviewing (Two Day Training) Jan, 20,2017, Jan, 27,2017	1/20/2017
15. Dutchess County Trauma Informed Care Training.	1/17/2017
16. Webinar on Ensuring patients on Anti-Psychotic medications are monitored for cardiovascular	1/10/2017
17. Actively Engaged Patient Reporting Webinar Ongoing	1/5/2017
18. Lunch and Learn on Achieving Equitable Health Care Outcomes at the Newburgh Black and Latino Coalition	1/4/2017
19. CNA to Home Health Aide Transitions Program	12/28/2016
20. Poughkeepsie Medical Neighborhood Meeting 1 Follow-Up: ED Workflow Dec 22 2016	12/22/2016
21. Middletown Medical Neighborhood Meeting 3 Dec 20 2016	12/20/2016
22. Achieving Racial Equity in Human Services Practice Dec 16 2016	12/16/2016
23. WMCHHealth PPS Presentation at partner site in Dutchess County: Health in All Policies: Social and Economic Determinants of Health Dec 15, 2016	12/15/2016
24. Cipherhealth Webinar for Middletown Medical Neighborhood Dec 15 2016	12/15/2016

Education & Trainings to Date	Date
25. Motivational Interviewing (Two Day Training) Dec 2, 2016 & Dec 9, 2016	12/9/2016
AHEC Nursing Workforce Development Dec 2, 2016	12/2/2016
26. CNA to Home Health Aide Transitions Program	11/29/2016
27. Poughkeepsie Medical Neighborhood Meeting 1 Nov 21 2016	11/21/2016
28. Presentation on Neighborhood Contextual Factors Influence Case Study	11/21/2016
29. Middletown Medical Neighborhood Meeting 2 Nov 18 2016	11/18/2016
30. Motivational Interviewing (Two Day Training) Nov 4, 2016 & Nov 18, 2016	11/18/2016
31. Lunch and Learn of Achieving Equitable Health Care Outcomes at Rockland Mental Health	11/17/2016
32. Primary Care Childhood Asthma, Preceptorship Training. One-day training for clinicians. (PCAP)	11/17/2016
33. Asthma Educator Workshop (Two Day Training)	11/17/2016
34. PAM Training at Open Door November 15,2016	11/15/2016
35. Blueprint for Health Equity Poverty Simulation Session November 9, 2016	11/9/2016
36. Workshop: Achieving Clinical Interoperability in the Medical Neighborhood	11/3/2016
37. Workshop: Stanford Diabetes Self-Management Training Workshop	11/3/2016
38. Asthma & Diabetes for Non-Medical Care Managers Workshop November 3, 2016	11/3/2016
39. Dr. Sayantani Presentation. From cultural competency to structural competency presentation.	11/3/2016
40. Diversity and Discrimination Workshop at Annual PPS DSRI Summit Nov 3,2016	11/3/2016
41. Achieving Clinical Interoperability in the Medical Neighborhood November 3, 2016	11/3/2016
42. Care Management Learning Collaborative Workshops	11/2/2016
43. PAM Training at MHA Westchester	10/31/2016
44. 3rd Annual Prevention Conference Law Enforcement & Public Health.	10/28/2016
45. Motivational Interviewing (Two Day Training) October 14, 2016 & October 28, 2016	10/28/2016
46. PAM Training at Middletown Health Center Port Jervis	10/28/2016
48. Lunch and Learn Achieving Equitable Health Care Outcome at the Public Health Priorities Meeting Oct 132016	10/14/2016

Education & Trainings to Date	Date
49. Blueprint for Health Equity Poverty Simulation Session October 13, 2016	10/13/2016
50. Lunch and Learn Achieving Equitable Health Care Outcomes at Warwarsing Cncl Agencies	10/11/2016
51. Actively Engaged Patient Reporting Webinar Ongoing	10/6/2016
52. Asthma Educator Workshop September 27 (Two Day Training)	9/27/2016
53. Middletown Medical Neighborhood Meeting 1 Sept 23 2016	09/23/2016
54. Poughkeepsie Planning Session for Mini Medical Neighborhood Meeting 9/21/16	09/21/2016
55. Considering Diversity in Equitable Health Care	9/19/2016
56. Presentation on High Impact Population Health Conference Sept 12, 2016	9/12/2016
57. Westchester Planning Session for Mini Medical Neighborhood Meeting Sept 9 2016	09/09/2016
58. PAM Training at Rockland Mental Health	9/8/2016
59. PAM Training at Open Door April 18 2016	8/18/2016
60. PAM Training at Open Door March 14,2016	8/16/2016
61. PAM Training at Open Door August 18, 2016	8/16/2016
62. PAM Training at WJCS August 12, 2016	8/12/2016
63. PAM at Rockland DOH Aug 08 2016	8/8/2016
64. PAM Training Rockland Department DOH Health Clinics	8/2/2016
65. PAM Training at HVCS August 2, 2016	8/2/2016
66. Hospital Focus Medical Neighborhood Meeting D July 28, 2016	07/28/2016
67. Lunch and Learn. Achieving Equitable Health Care Outcomes at the Lower Hudson Valley Perinatal	7/22/2016
68. Lunch and Learn. Achieving Equitable Health Care Outcomes at Community SALT	7/21/2016
69. PAM Training at Open Door	7/12/2016
70. PAM Training at Open Door	7/12/2016
71. Actively Engaged Patient Reporting Webinar Ongoing	7/8/2016
72. Lunch and Learn Achieving Equitable Health Care Outcomes at the Lexington Center	7/8/2016
73. Dutchess County DOH (Behavioral and Community Health) Healthify Training	7/8/2016
74. Hawthorne Foundation Inc. Healthify Training	7/7/2016
75. Actively Engaged Patient Reporting Webinar	7/6/2016



Workforce Trainings Completed to Date Continued

	Education & Trainings to Date	Date
76.	Human Development Services of Westchester Healthify Training	7/5/2016
77.	Neighbors Link Healthify Training	6/30/2016
78.	Diabetes PDSA Training with CEQAC Committee	6/29/2016
79.	Lunch and Learn Achieving Equitable Health Care Outcomes at Catholic Charities Recovery	6/24/2016
80.	Primary Care Focus Medical Neighborhood Meeting June 22 2016	06/22/2016
81.	Medical Neighborhood Primary Care Focus	6/22/2016
82.	Blueprint for Health Equity Poverty Simulation Event Jun 17, 2016	6/17/2016
83.	WMCHealth Healthify Training	6/16/2016
84.	Leveraging Opportunities in Healthcare Delivery System - Session 5	6/15/2016
85.	Westchester County Department of Health Healthify Training June 15, 2016	6/15/2016
86.	Putnam County Department of Health Healthify Training June 14, 2016	6/14/2016
87.	Asthma Educator Workshop June 9 2016 (Two Day Training)	6/9/2016
88.	Lunch and Learn. Achieving Equitable Health Care Outcomes at Western Ramapo Network	6/9/2016
89.	PAM Training Family of Woodstock	6/3/2016
90.	HealthAlliance Healthify Training June 3, 2016	6/3/2016
91.	PAM Training Family Woodstock	6/3/2016
92.	Leveraging Opportunities in Healthcare Delivery System Session 4	6/2/2016
93.	PAM Training MHA Westchester	6/2/2016
94.	PAM Trainings MHA June 2, 2016	6/2/2016
95.	Leveraging Opportunities in Healthcare Delivery System Board Session	5/24/2016
96.	Lunch and Learn. Achieving Equitable Health Care Outcomes at PPHP Mid-Hudson May 23, 2016	5/23/2016
97.	Leveraging Opportunities in Healthcare Delivery System Session 3	5/19/2016
98.	PAM Training Food Bank of Westchester	5/19/2016
99.	HRDPHC- Partner Engagement Subcommittee-PDSA Workshop May 18 2016	5/18/2016
100.	Achieving Equitable Health Care Outcomes Community Resource Center May 17, 2016	5/17/2016
101.	PAM Training Fallsburg Pediatric	5/17/2016
102.	Lunch and Learn Achieving Equitable Health Care Outcome Training-Cornerstone May 11, 2016	5/11/2016

	Education & Trainings to Date	Date
103.	PAM Training Guidance Center	5/10/2016
104.	Leveraging Opportunities in Healthcare Delivery System a-Session 2	5/5/2016
105.	HealthAlliance Healthify Training April 26, 2016	4/26/2016
106.	Leveraging Opportunities in Healthcare Delivery System Session 1	4/21/2016
107.	Leveraging Opportunities in Healthcare Delivery System and Payment Reform	4/21/2016
108.	PAM Training HVCS	4/20/2016
109.	PAM Training MISN	4/12/2016
110.	PAM Training HVCS	4/8/2016
111.	PAM Training HVCS	4/7/2016
112.	PAM Training Community Resource Center	4/6/2016
113.	Community Engagement Focus Group	4/4/2016
114.	Improving Healthcare for Lesbian, Gay, Bisexual, and Transgender Individuals	4/3/2016
115.	PAM Training Rockland Department DOH Health Clinics	3/25/2016
116.	Lung Force Expo March 23, 2016	3/23/2016
117.	PAM Training Middletown Health Center Port Jervis	3/22/2016
118.	Asthma Educator Workshop March 17, 2016 (Two Day Training)	3/17/2016
119.	Medical Neighborhood C Meeting Mar 17 2016	03/17/2016
120.	Medical Neighborhood B Meeting Mar 10 2016	03/10/2016
121.	WMCHealth PPS-CRHI Healthify Training March 7, 2016	3/7/2016
122.	PAM Training Cornerstone Family Healthcare	3/4/2016
123.	Medical Neighborhood A Meeting Mar 3 2016	03/3/2016
124.	PAM training Lexington Center for Recovery New Rochelle	3/2/2016
125.	PAM training Lexington Center for Recovery Peekskill	2/16/2016
126.	PAM Training Hope College of New Rochelle	2/9/2016
127.	PAM Training HVCS August 2, 2016	2/4/2016
128.	PAM training Lexington Center for Recovery Mt Kisco	2/3/2016

	Education & Trainings to Date	Date
129.	PAM training Lexington Center for Recovery Haverstraw	1/29/2016
130.	PAM Trainings Lexington Center for Recovery-Rockland	1/29/2016
131.	PAM training Lexington Center for Recovery Airmont	1/29/2016
132.	PAM Training Planned Parenthood MidHudson Valley Peconic	1/27/2016
133.	PAM training Lexington Center for Recovery Page Park	1/26/2016
134.	PAM Training Health Alliance 1/22/16	1/22/2016
135.	PAM Training HVCS 1/20/2016	1/20/2016
136.	PAM Training Planned Parenthood MidHudson Valley - New Windsor	1/8/2016
137.	PAM Training 2015	1/1/2016
138.	PAM training Lexington Center for Recovery	12/10/2015
139.	PAM Training Planned Parenthood Hudson Peconic 12/04/2015	12/4/2015
140.	PAM Training Planned Parenthood MidHudson Kingston 11/24/2015	11/24/2015
141.	PAM Training HVCS 11/12/2015	11/24/2015
142.	PAM Training MISN 11/20/2015	11/20/2015
143.	PAM Training Planned Parenthood Mid-Hudson 11/19/2015	11/19/2015
144.	PAM Training Planned Parenthood Hudson Peconic	11/13/2015
145.	PAM Training 2015 Cornerstone 9/18/2015	9/18/2015
146.	PAM Training 2015 Open Door	7/30/2015
147.	PAM Training 2015 Open Door	6/11/2015

Community Engagement Activities

- Mt Vernon Community Network Campaign April 6, 2016
- Forme Wellness Center
- Yonkers Thrives
- O Positive Festival
- Community Engagement Focus Group Sessions-Orange County
- New Rochelle Network Meeting May 3, 2016
- Mount Vernon Network Meeting May 4, 2016
- White Plains Network Meeting May 9, 2016
- Delaware County Community Engagement Meeting May 12, 2016
- Peekskill Network Meeting May 13, 2016
- HVHRON Meeting March 6, 2015
- HVHRON Meeting August 27, 2016
- HVHRON Meeting April 4, 2016
- Immigration Coalition Meeting
- Mt Vernon Community Network Meeting
- Public Health Priorities Meeting December 11, 2015
- Faith Based Meeting John Simon December 3, 2015
- Immigration Coalition January 8, 2016
- Immigration Coalition Rockland county February 5, 2016
- Community Engagement United Way Orange Dutchess Latino Meeting March 15,2016
- Community Engagement Latino Meeting March 15, 2016
- Bringing Agencies Together Network Meeting October 6, 2015
- Yonkers Network Meeting October 27,2015
- New Rochelle Network Meeting December 1, 2015
- Faith Based event MidHudson March 10,2016
- Yonkers Network Meeting July 26 2016
- Westchester Medical Network Community Relations Committee
- Hudson Valley Access Health Care for all November 17, 2016
- Immigration Coalition of Rockland
- Immigration Coalition Meeting December 2,2016
- Western Ramapo CBO Meeting November 10,2016
- Haverstraw Collaborative Meeting December 7, 2016
- Suicide Prevention Coalition December 14, 2016
- Spring Valley CBO Network Meeting December 13, 2016
- Immigration Coalition of Rockland January 6,2017
- Joint Membership Healthy Community Agencies January 25, 2017
- Suicide Prevention Coalition January 25,2017
- Hudson Valley Access Health Care for all January 26, 2017
- Community Engagement Focus Group Sessions-Westchester
- Healthy Black and Latino Coalition Meeting July 14, 2016
- Dutchess BAT-Bringing Agencies Together
- Newburgh Healthy Black and Latino Coalition
- Haverstraw Collaborative Meeting May 4, 2016
- Nyack Youth Collaborative
- Spring Valley Collaborative Meeting May 10, 2016
- Western Ramapo Collaborative Meeting May 12, 2016
- Immigration Coalition
- Ulster BAT- Bringing Agencies Together
- Sullivan Care Corps Coalition
- White Plains Network Meeting April 11, 2016
- Mt. Vernon Network Meeting January 6,2016
- Mt. Vernon Network Meeting February 3,2016
- Mt. Vernon Network Meeting February 11,2016

Organizations Conducting Patient Activation Measure Surveys

- MHA Westchester
- DOH Rockland
- Department of Mental Health Rockland county
- MISN
- Health Alliance
- Hope Community Services
- Lexington Center for Recovery
- Westchester Medical Center
- Mental Health Association of Westchester
- Guidance Center of Westchester Inc.
- Crystal Run Healthcare LLP
- Cornerstone Family Healthcare
- Llobet Medical Group
- Food Bank for Westchester
- Hudson Valley Community Services Inc.
- Family of Woodstock, Inc.
- Open Door Family Medical Center Inc.
- Planned Parenthood Hudson Peconic Inc.
- Planned Parenthood Of Mid-Hudson Valley
- Community Resource Center
- Middletown Community Health Center Inc.
- Fallsburg Pediatrics

Patient-Centered Medical Home Sites

Llobet Medical Group

- Kingston
- Margaretville

Community Medical and Dental

- Monsey

Mt. Vernon Neighborhood Health Center

- Greenburg
- Yonkers
- Mt. Vernon

Middletown Community

- Port Jervis
- Washingtonville
- Pine Bush
- Middletown 1
- Middletown 2

Bambini Pediatrics

- Poughkeepsie

Fallsburg Pediatrics

- Fallsburg

The Center for Discovery

- Monticello

Elite Health Care

- Monroe

Greater Hudson Valley Medical Group

- Middletown
- Monroe
- Harris
- Callicoon
- Livingston

Hillcrest Medical Associates

- Nanuet

Boston Children's Health Physicians

- Hawthorne
- Washingtonville
- Sleepy Hollow
- Eastchester
- Orangeburg
- Tarrytown
- Hopewell Junction
- Bardonia
- Newburgh
- Middletown

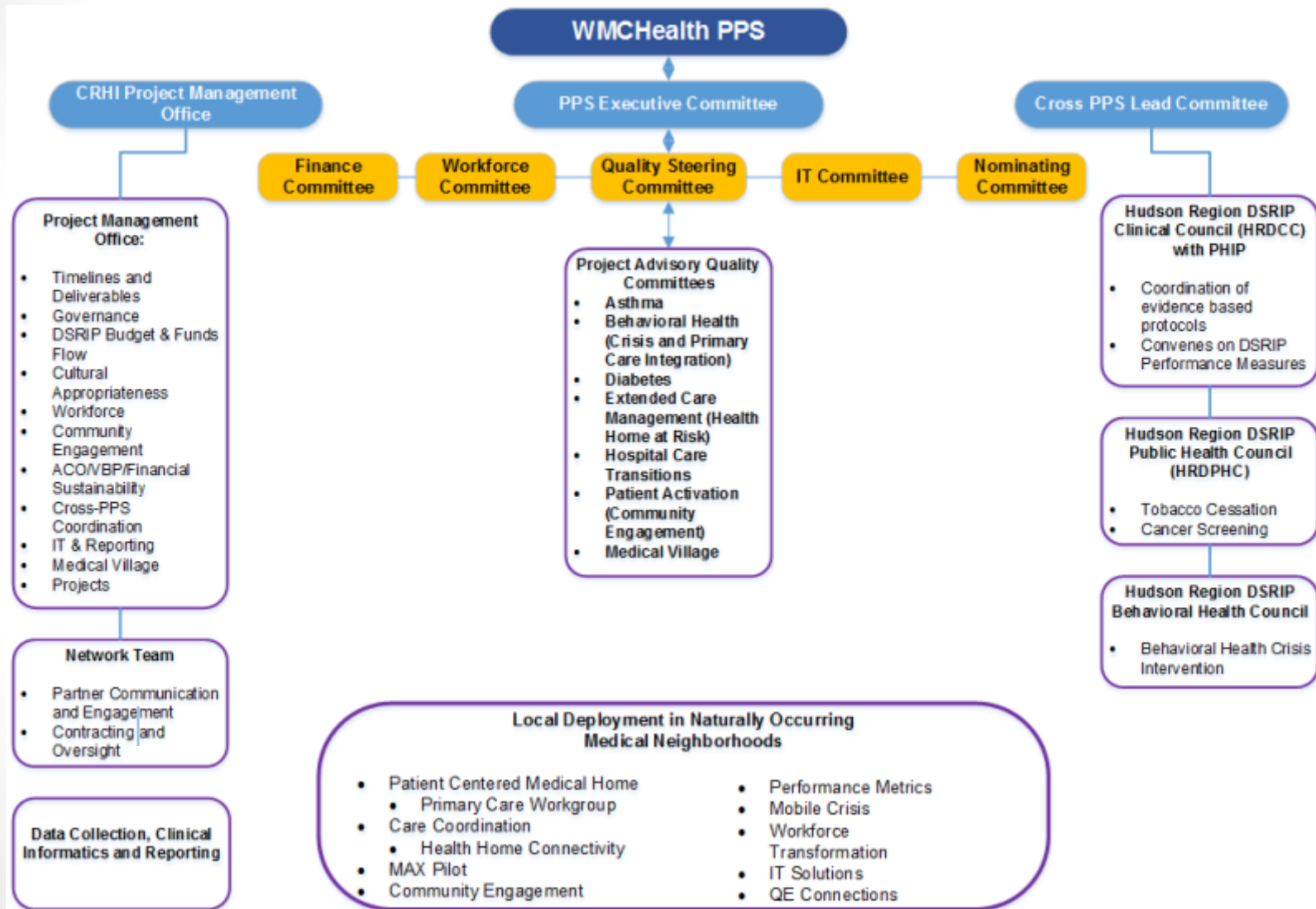
Westchester Institute for Human Development

- Valhalla

Bon Secours Charity Health System

- West Nyack
- Suffern (5)
- New City
- Port Jervis (4)
- West Haverstraw
- Pomona

WMCHHealth PPS Governance Organization Chart



Anchor Institution Definition: Organizations such as universities and hospitals which leverage their assets and revenues to promote local private sector development. Anchor institution's:

- have a large stake and an important presence in the community and city
- have an economic impact on employment, revenue gathering and spending patterns
- have consumed sizable amounts of land
- be a job generator
- have fixed assets and should not be likely to relocate
- attract businesses and highly skilled individuals
- have multi-level employment possibilities, and
- be a center of culture, learning and innovation with enormous human resources

Anchor Institution Mission: To consciously and creatively unleash the institution's long-term, place-based economic power, combined with its human and intellectual resources, to better the community which it is based

Source: 2016 Vol 1 Journal on Anchor Institutions and Communities