



Department
of Health

1115 Medicaid Redesign Team Waiver

Annual Public Forum

March 26, 2025

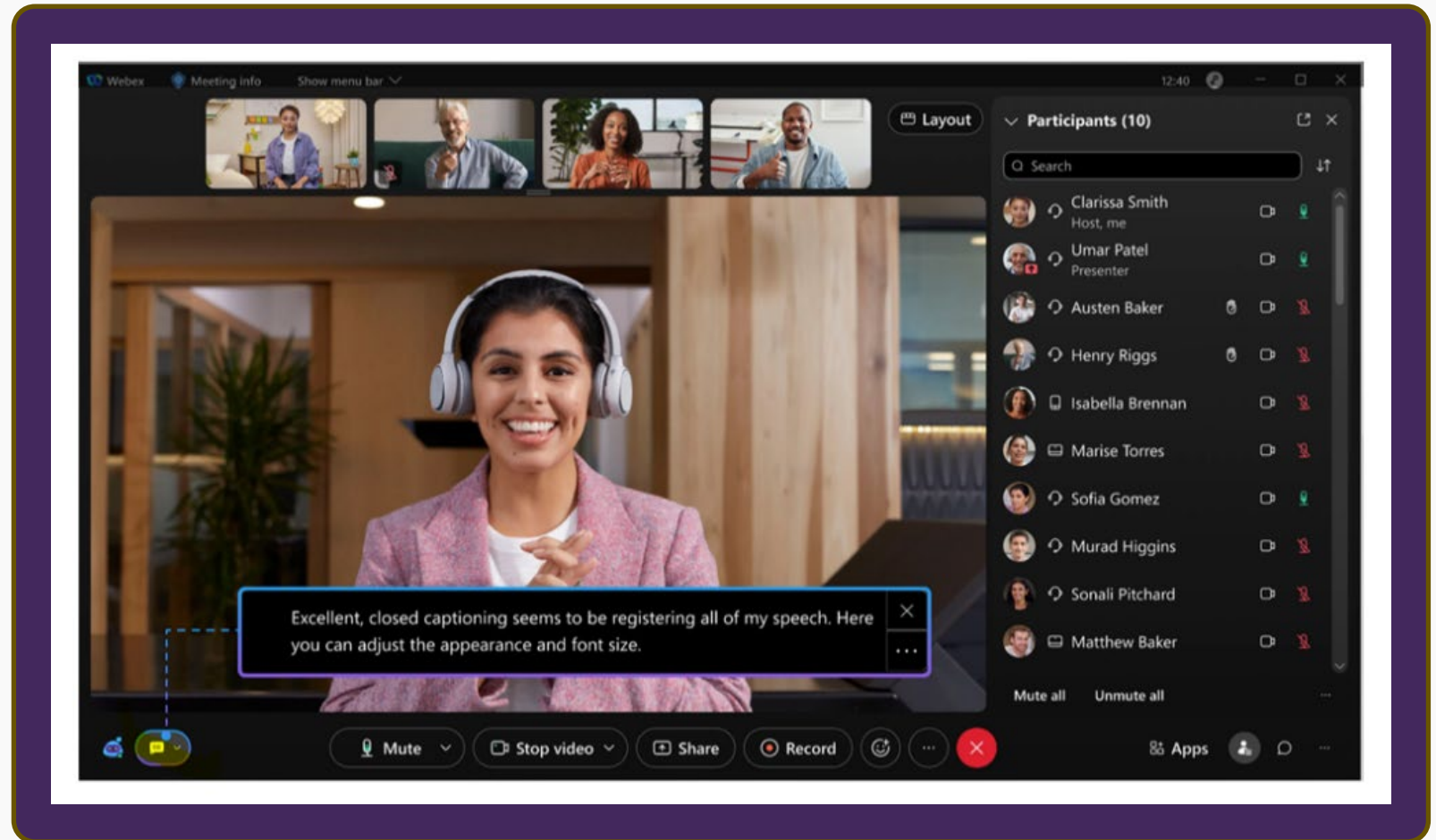
CLOSED CAPTIONS AVAILABLE

To enable closed captions during the webinar:

- Find the “**cc**” icon in the lower left of the screen.



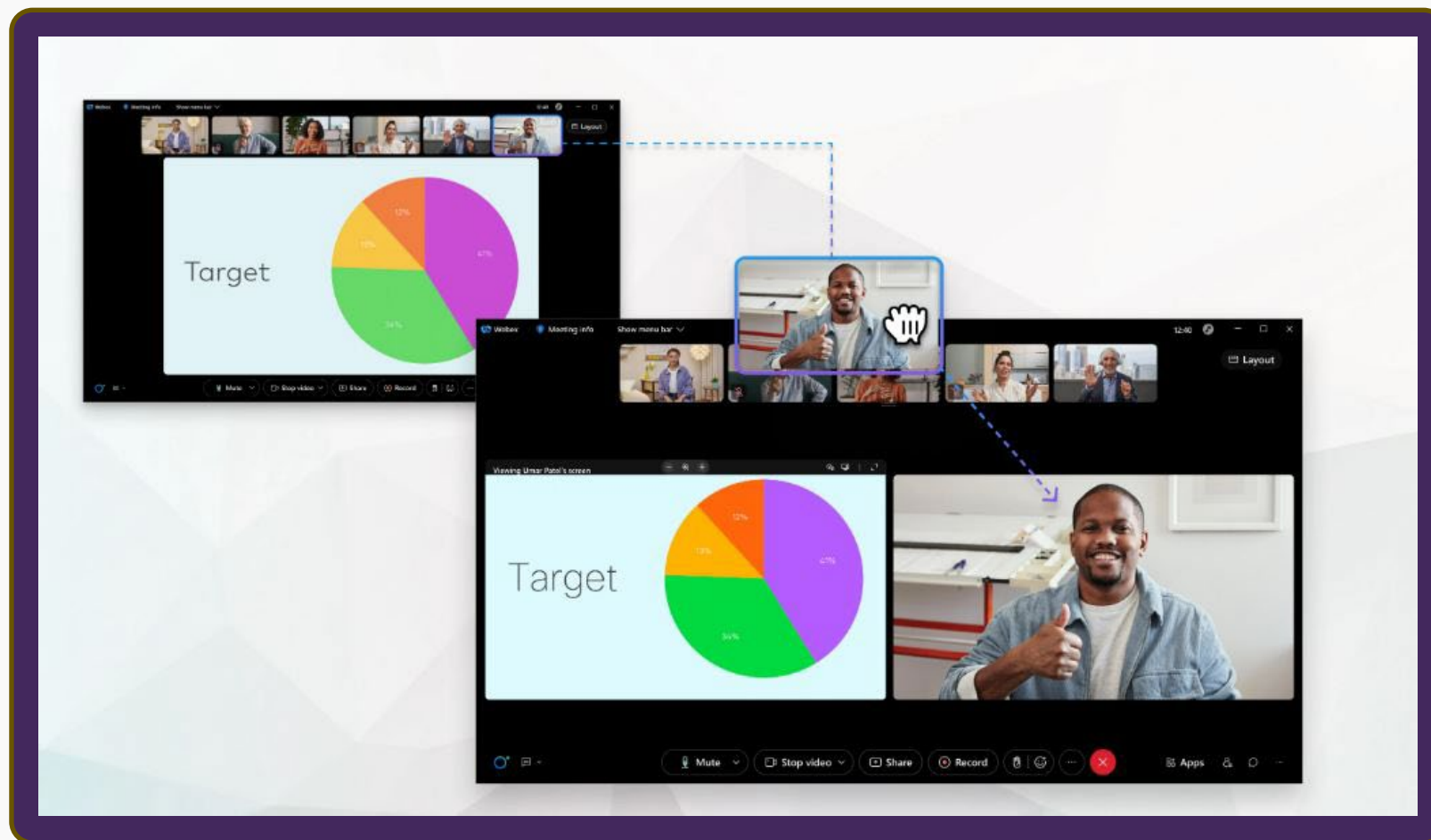
- Click on “**Show Closed Captions**”.



MOVING ASL INTERPRETERS TO PRESENTATION STAGE

To move an American Sign Language (ASL) Interpreter to the WebEx presentation area, or “Stage”:

- Right click on the Interpreter’s video icon.
- Select “***Move to Stage***”.



AGENDA

- Public Forum Format
- 1115 Demonstration Waiver Overview
- New York's 1115 Waiver Overview
- Continuous Eligibility for Children Ages 0-6
- New York Health Equity Reform Programs
- Other Programs and Pending Amendments
- Public Comment

PUBLIC FORUM FORMAT

The State is hosting this meeting to comply with the public forum requirements detailed in 42 CFR § 431.420(c) and in the Special Terms and Conditions (STC) for the Medicaid Redesign Team 1115 Demonstration Waiver.

The Purpose of today's public forum is to:

- Provide an overview of the 1115 waiver.
- Afford the public an opportunity to provide comments on the 1115 waiver.

A **recording** and **transcription** of this public forum will be available on the MRT Waiver website 7-10 days after the forum. **Language translation** is available upon request.



1115 DEMONSTRATION WAIVER OVERVIEW



- Section 1115 Demonstration Waivers grant flexibility to states for **innovative projects that advance the objectives of the Medicaid program.**
- **Authorized under Section 1115 of the Social Security Act, these waivers:**
 - Give the Secretary of Health and Human Services the authority to waive certain provisions and regulations for Medicaid programs
 - Allow Medicaid funds be used in ways that are not otherwise allowed under federal rules (e.g., making certain investments eligible for federal match).
- Typically, 1115 waivers are **approved for 3-5 years.**



1115 DEMONSTRATION WAIVER OVERVIEW CONT.

Special Terms and Conditions (STCs) outline the basis of an agreement between the State and the Centers for Medicare & Medicaid Services (CMS), including waiver and expenditure authorities.

- STCs specify the State's obligation to CMS during the life of the demonstration, including general and financial reporting requirements and the timetable of State deliverables.
- Quarterly and annual reports to CMS are required, and an Independent Evaluation is completed at the end of a Demonstration program.

Budget Neutrality:

- Federal Medicaid expenditures with the Waiver cannot be greater than federal expenditures without the Waiver over the course of the 1115 Demonstration Waiver.



NEW YORK'S 1115 WAIVER

- The **NYS Medicaid Redesign Team (MRT) Waiver** (formerly the Partnership Plan) has been in effect since 1997.
- New York's 1115 MRT Waiver was last renewed on April 1, 2022, and is effective through March 31, 2027.

The goals of the MRT Waiver are as follows:



Improve access to health care for the Medicaid Population



Improve the quality of health services delivered



Expand coverage to additional low-income New Yorkers with resources generated through managed care efficiencies



Advance health equity, reduce health disparities, and support the delivery of health-related social need (HRSN) services.



Department
of Health

NEW YORK'S 1115 MRT WAIVER PROGRAMS



The 1115 MRT Waiver authorizes **Medicaid Managed Care** in New York State.

Managed Care refers to when a health insurance plan or health care system coordinates the provision, quality, and cost of care for its enrolled members.

1115 Managed Care Programs include:

- Mainstream Medicaid Managed Care (MMMC)
- Managed Long Term Care (MLTC) and Institution to Community Long Term Services and Supports (LTSS)
- Home and Community Based Services (HCBS)
- Health and Recovery Plans (HARPs) & HIV Special Needs Plans (HIV SNP)



CONTINUOUS ELIGIBILITY FOR CHILDREN AGES 0-6



Effective January 1, 2025, children enrolled in Medicaid and Child Health Plus up to age six will remain covered, even if family income exceeds eligibility limits.

Continuous eligibility is expected to expand health coverage for 800,000 children across New York State.

Continuous Eligibility Goals



Keep young children connected to coverage and care during formative years



Reduce disparities in coverage churn rates and promote health equity



Support improved health and social outcomes later in life

NEW YORK HEALTH EQUITY REFORM

NYHER GOALS

On January 9, 2024, CMS approved the **New York Health Equity Reform (NYHER) 1115 Waiver Amendment**, which is comprised of several initiatives that are working in concert to:

- ✓ Advance health equity
- ✓ Reduce health disparities
- ✓ Support the delivery of social care

NYHER INITIATIVES



Social Care

Social Care Networks



Population Health

Medicaid Hospital Global Budget Initiative
Health Equity Regional Organization



Strengthening the Workforce

Career Pathways Training Program
Student Loan Repayment

OVERVIEW OF SOCIAL CARE NETWORKS



As of January 1, 2025, Social Care Networks (SCNs) are now live, connecting **community-based organizations, providers, and other partners** to **provide screening, navigation, and delivery of health-related social need (HRSN) services** to New York Medicaid members.

Services available through SCNs include:



Screening for
unmet HRSNs



Navigation to
services



Food and
nutrition services



Housing
supports



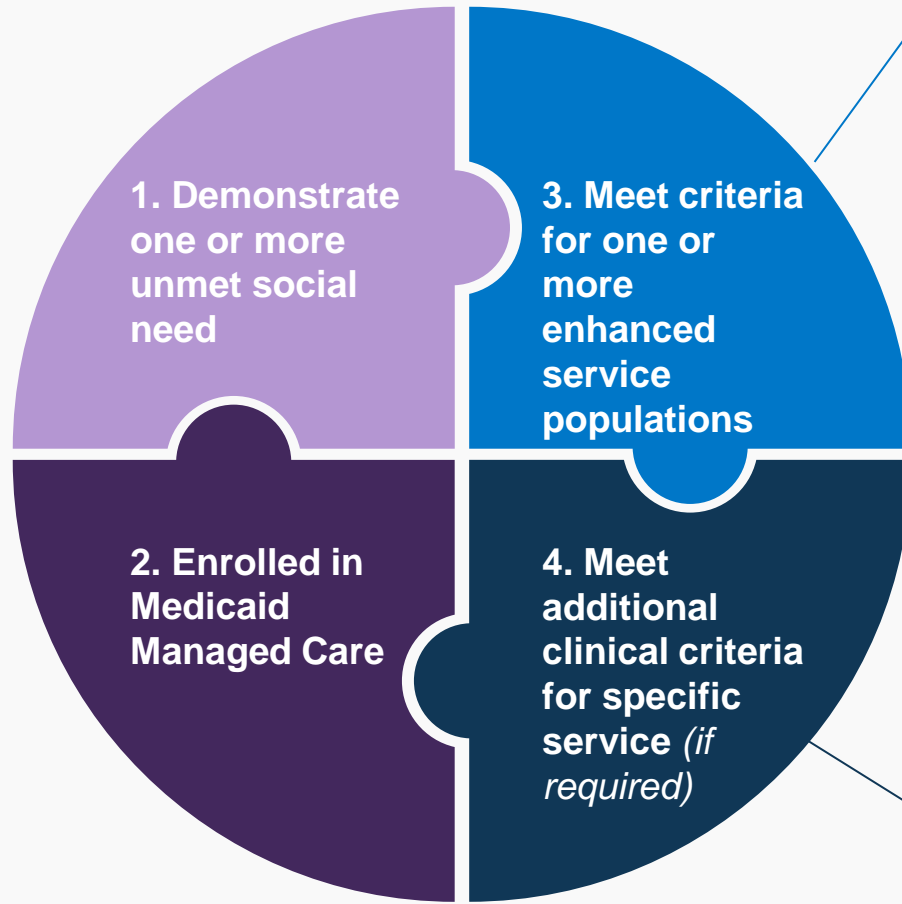
Transportation



Department
of Health

HRSN SERVICES OVERVIEW AND ELIGIBILITY

Criteria to receive enhanced services



Populations of focus

- Members with substance use disorder and/or serious mental illness
- Members with intellectual and developmental disabilities
- Pregnant or postpartum persons
- Members recently released from incarceration and have chronic health condition(s)
- Children under 18 – including youth involved in foster care, juvenile justice, or kinship care – with chronic health conditions
- Frequent health care users (e.g., emergency room, hospital stays)
- Members enrolled in a Health Home



Certain enhanced HRSN services will require additional clinical criteria be met (e.g., physical disability)



Department
of Health

REGIONAL SCN LEAD ENTITIES

Social Care Network Lead Entity

North Country	
Central NY	<u>Healthy Alliance Foundation Inc.</u>
Capital Region	
Western NY	<u>Western New York Integrated Care Collaborative Inc.</u>
Finger Lakes	<u>Forward Leading IPA, Inc</u>
Southern Tier	<u>Care Compass Collaborative</u>
Hudson Valley	<u>Hudson Valley Care Coalition, Inc.</u>
New York City ¹	<u>Public Health Solutions</u>
Bronx	<u>Somos Healthcare Providers, Inc.</u>
Staten Island	<u>Staten Island Performing Provider System</u>
Long Island	<u>Health Equity Alliance of Long Island</u>



Department
of Health

1. Includes Brooklyn, Manhattan, and Queens

MEDICAID HOSPITAL GLOBAL BUDGET INITIATIVE (MHGBI)

NYHER provides incentive funding to stabilize financially distressed, Medicaid-dependent safety net hospitals and develop necessary capabilities to:



Improve population health



Transition to a global budget model



Deepen integration of primary care, behavioral health, and HRSN services

Alignment with AHEAD

In October 2024, CMS selected NYS to participate in the **All Payer Health Equity Approaches and Development (AHEAD)** model, a total cost of care model that seeks to:

- Drive **state and regional health care transformation**
- **Advance population health**, while lowering costs
- **Promote alignment** of Medicaid, Medicare, and commercial payers.

WORKFORCE INITIATIVES

Student Loan Repayment

Offers student loan repayment for practitioners who make a four-year commitment to serving Medicaid members and uninsured individuals

Eligible types of providers include:



Psychiatrists, with a priority on Child / Adolescent Psychiatrists



Primary Care Physicians and Dentists



Nurse Practitioners and Pediatric Clinical Nurse Specialists

Applications for the Student Loan Repayment Program are expected to be released in Summer 2025.



Department of Health

Career Pathways Training Program

Tuition, support services, and other benefits for individuals entering or advancing their careers in health-related fields, with a commitment to serving Medicaid members and uninsured individuals

Eligible roles include:



Professional technical

- Physician assistant
- Mental health counselor
- Social worker
- Alcohol / Substance use counselor
- Pharmacy technician
- Medical assistant
- Respiratory therapist



Nursing

- Licensed practical nurse
- Associate registered nurse
- Registered Nurse to Bachelor of Science in Nursing
- Nurse practitioner



Frontline public health workers

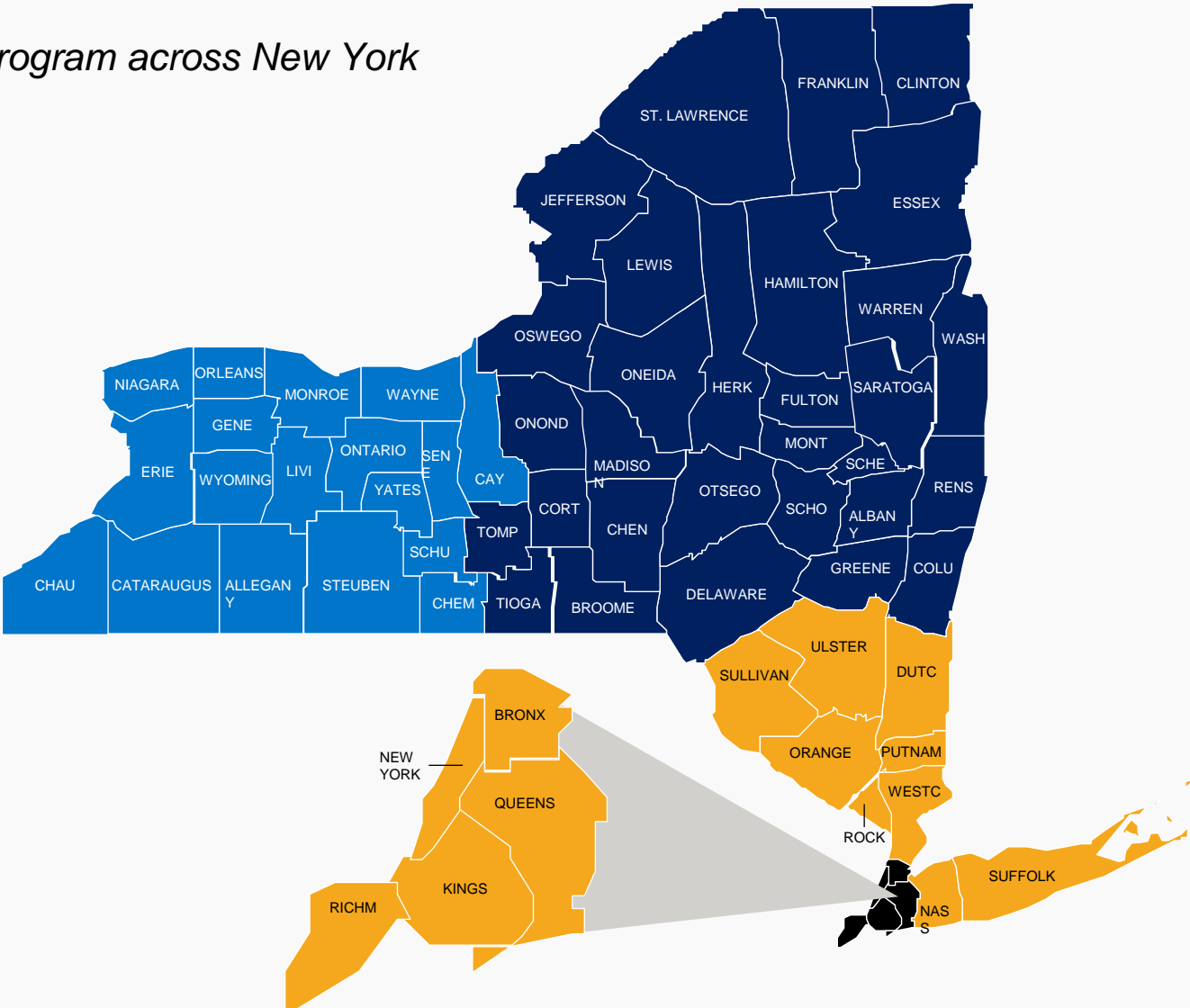
- Community health worker
- Patient care manager

For more information visit:
[Career Pathways Training \(CPT\) Program](#)

WORKFORCE INVESTMENT ORGANIZATIONS (WIOS)

Three WIOs support regional management of the CPT program across New York State regions

Region	WIO
North Country	<u>Caring Gene Healthcare Career Pathways</u>
Central NY	
Capital Region	
Southern Tier	
Western NY	<u>Finger Lakes Performing Provider System</u>
Finger Lakes	
Hudson Valley	<u>1199 SEIU Training and Employment Funds</u>
New York City	
Long Island	



Department
of Health

HEALTH EQUITY REGIONAL ORGANIZATION (HERO)

KEY HERO ACTIVITIES:

Regional Convenings



Convene regional partners to align on health equity priorities, share best practices, and provide feedback on waiver programs

Data Aggregation



Collect and share information on use of health services, health outcomes, and social care needs.

Regional Needs Assessment & Planning



Work with regional partners to identify health equity priorities and interventions

Program Evaluation



Review waiver programs to support continuous improvement

United Hospital Fund launched the HERO activities in January 2025.



Department
of Health

OTHER PROGRAMS AND PENDING AMENDMENTS

Substance Use Disorder (SUD) Institutions for Mental Diseases (IMD) Transformation Demonstration Program

- Provides access to high quality, evidence-based Opioid Use Disorder (OUD) and Substance Use Disorder (SUD) treatment services ranging from residential and inpatient treatment to ongoing chronic care for these conditions in cost-effective community-based settings.
- This includes services provided in residential and inpatient treatment settings that qualify as an IMD.
- Currently, The Office of Addiction Services and Supports (OASAS) is supporting the transition from Part 819 residential or medically monitored model to the Part 820 residential model.
- Goal: Complete statewide conversion by February 2026.

Pending:

Medicaid Buy-In Program for Working People with Disabilities (MBI-WPD) and Career Pathways Training (CPT) Program Amendment

- The MBI-WPD Demonstration Program aims to help more New Yorkers with disabilities find and maintain employment while obtaining critical services needed to live and work independently in the community.
- Seeks to establish enhanced Medicaid financial eligibility rules for the program with favorable income and resource rules.
- Currently, Workforce Investment Organizations are authorized to provide up to two days of backfill payments to providers for employees attending education or training programs during work hours in order to preserve access to care. We are seeking to amend the current two day maximum to allow for up to five days.



ADDITIONAL RESOURCES



[New York 1115 Waiver Website](#)



[Current Special
Terms and Conditions](#)



[New York Social Care Networks Website](#)



[Career Pathways Training \(CPT\)
Program Website](#)



[Subscribe to MRT Listserv](#)

For further information on the 1115
waiver, please contact us at:
1115waivers@health.ny.gov.



Public Comment



Department
of Health

GUIDELINES FOR PUBLIC COMMENTS

- A list of the pre-registered commenters will indicate the order in which you will be called on to speak.
- A member of the DOH team will call your name and manually unmute your line to allow you to provide your comment.
- Comments will be timed, please limit your comment to five minutes.
- Written comments will be accepted through **April 5, 2025**, by email at 1115waivers@health.ny.gov or by mail at:



Department of Health
Office of Health Insurance Programs
Waiver Management Unit
99 Washington Ave., 8th fl. (Suite 826)
Albany, NY 12210



**Department
of Health**

ONE MINUTE REMAINING



Department
of Health

TIME IS UP



Department
of Health



**Department
of Health**