

Population and General Health Description – New York State

**Presented on February 1, 2012
New York State Department of Health**

Revised February 15, 2012

Topic Outline

- **Demographic Description**

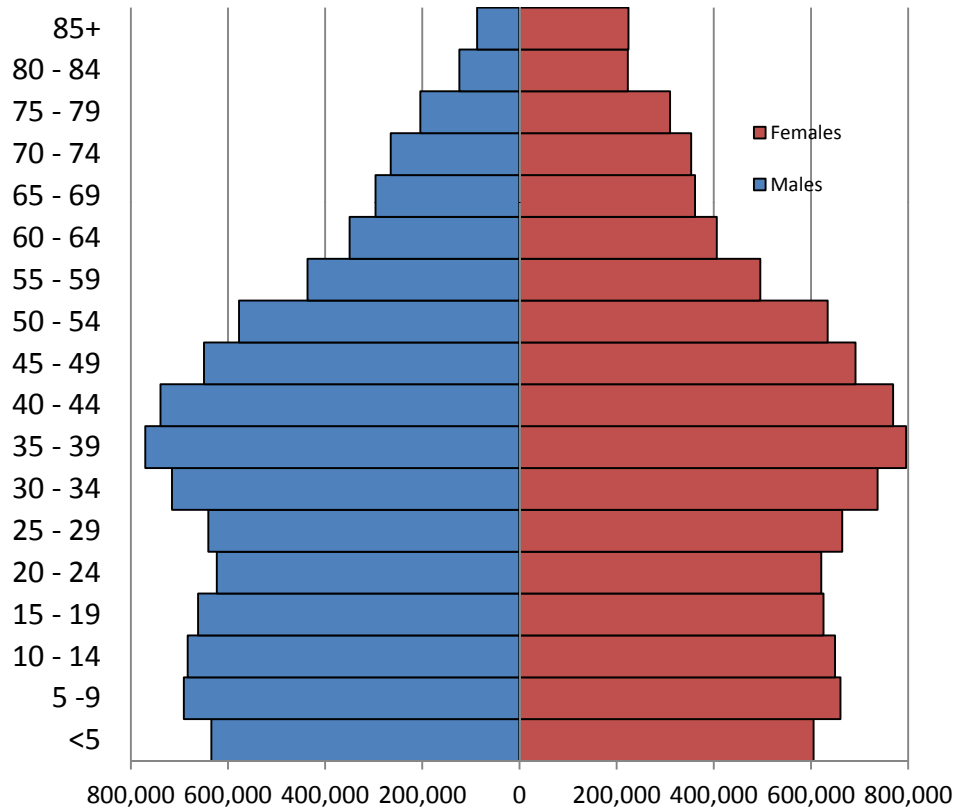
- Population by Age, Gender, Race, Income and Poverty, and Educational Attainment
- Population Changes Over Time

- **General Health Description**

- Leading Causes of Death, Rates of Selected Causes of Death, Estimated Number of Deaths Due to Modifiable Behaviors, Birth Outcomes, Maternal Behaviors and Teen Pregnancy, Chronic Diseases, Behavioral Risk Factors, and Persons with Disabilities.
- Identification of Disparities and Regional Differences
- America's Health Rankings

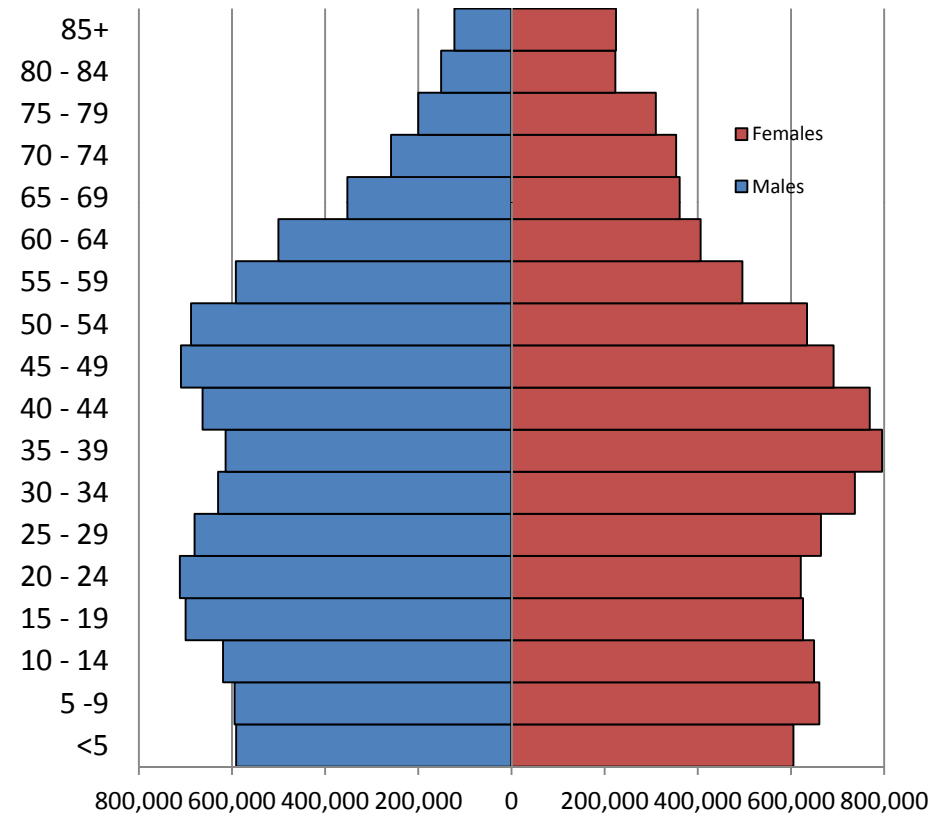
Population Distribution by Age and Gender, New York State, 2000, 2010

Population by Age and Gender for
New York State, 2000



Data Source: US Census Bureau

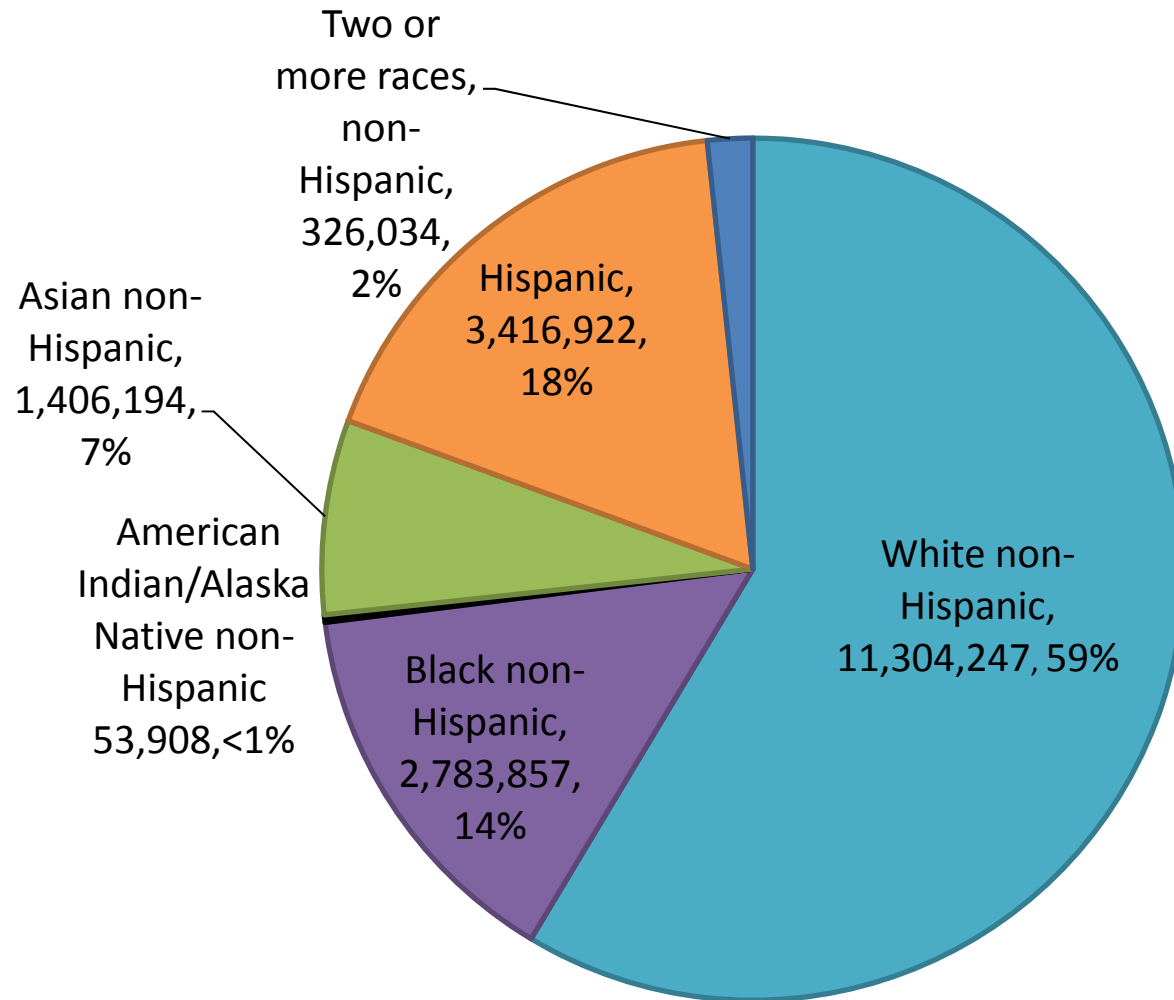
Population by Age and Gender for
New York State, 2010



Data Source: US Census Bureau

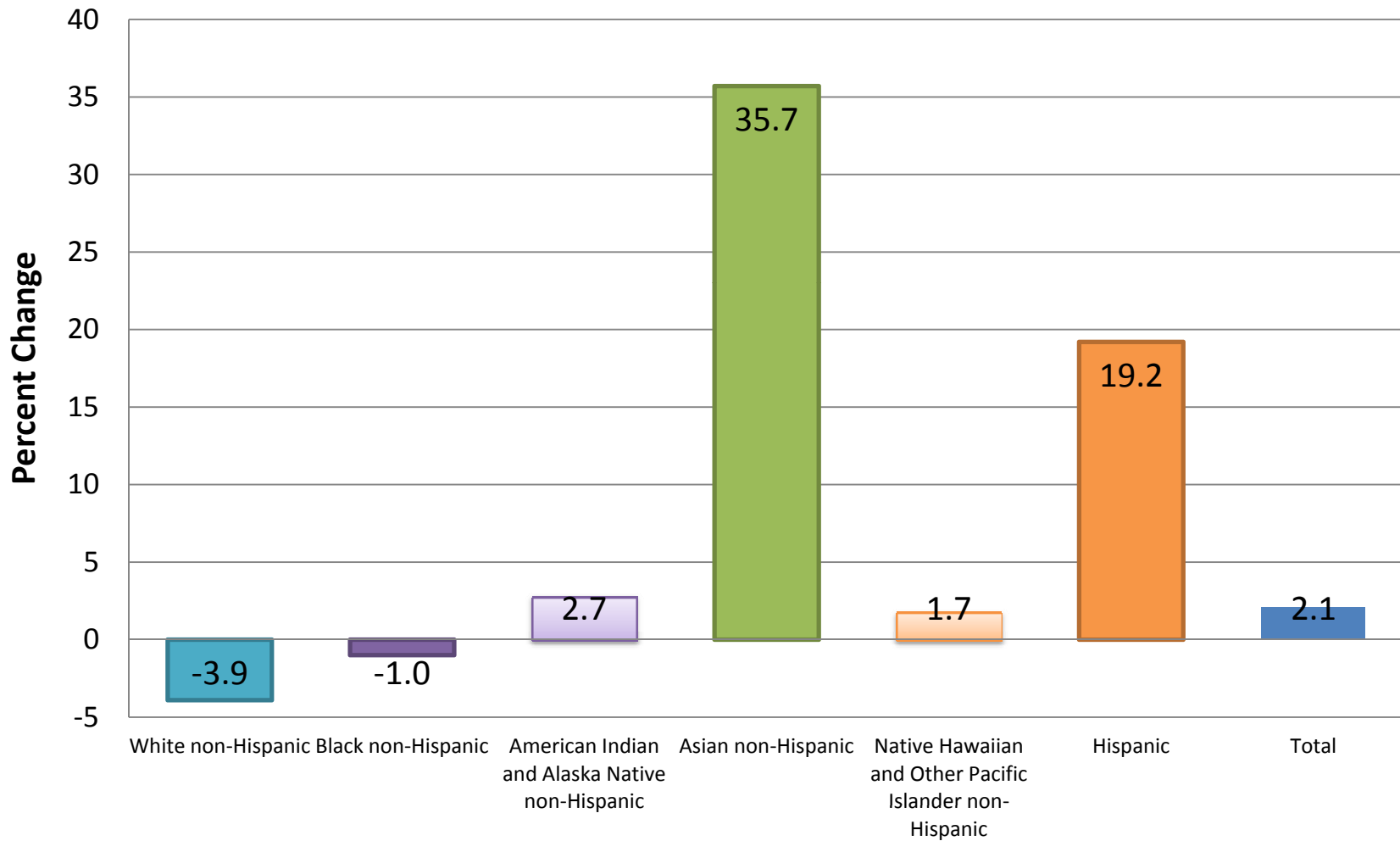
Note: the percent change of USA total population(from 2000 to 2010) is 9.7%.

Population by Race/Ethnicity, New York State, 2010



Data source: Census 2010 Redistricting Data

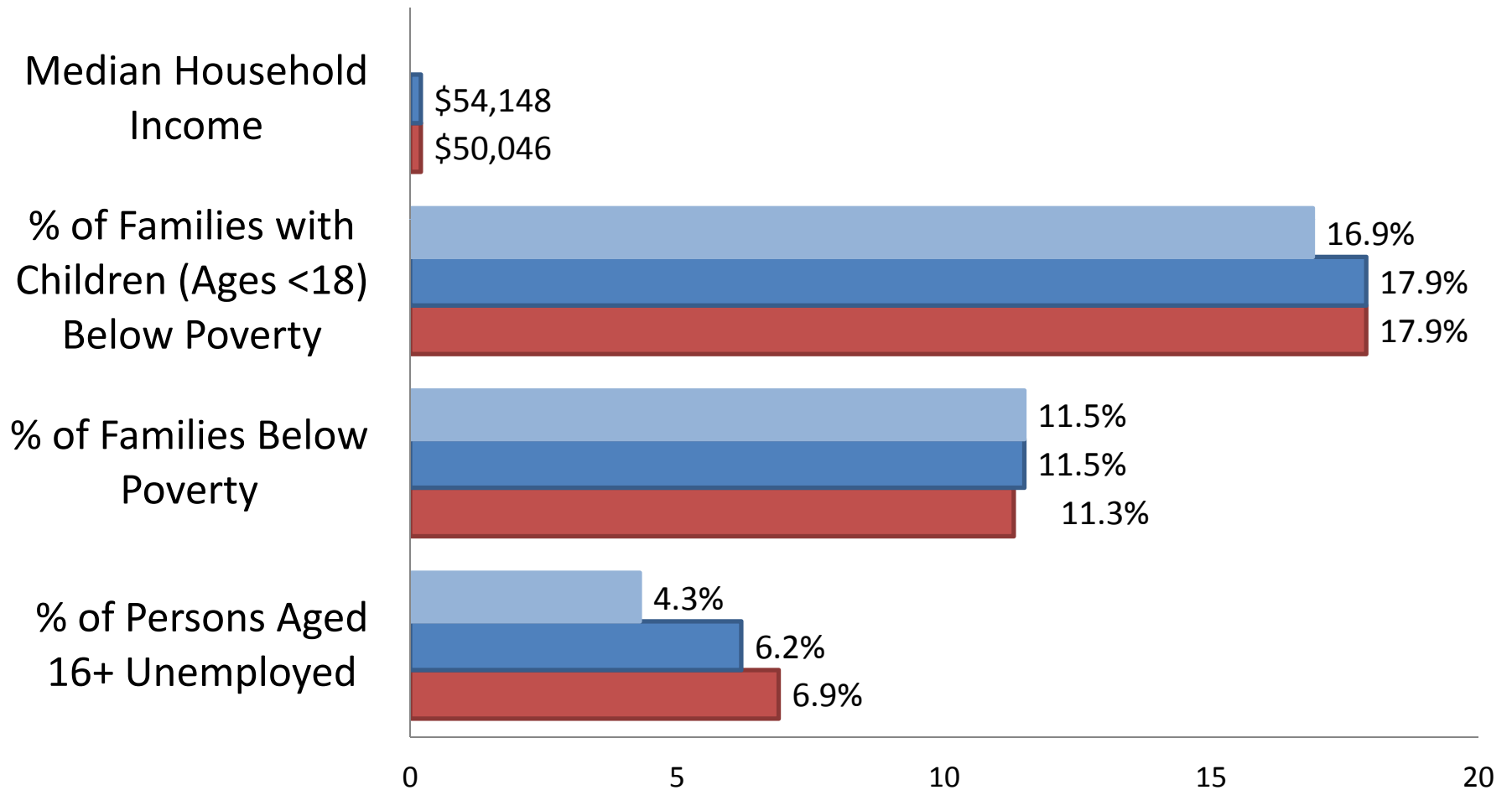
Percent Change in Population by Race/Ethnicity, New York State, 2000 and 2010



Data source: Census 2000 Redistricting Data and Census 2010 Redistricting Data

Income and Poverty New York State and U.S.

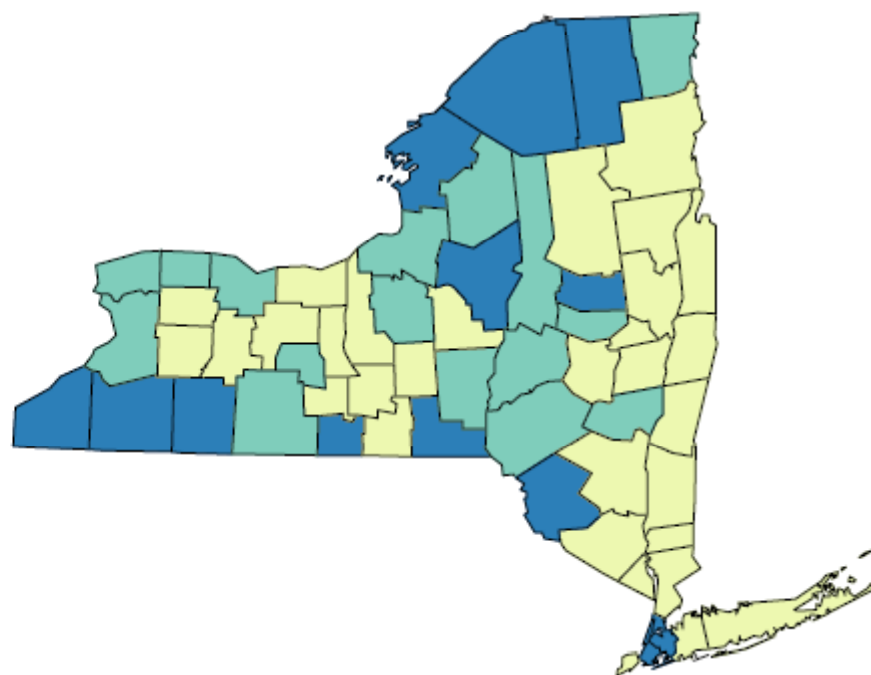
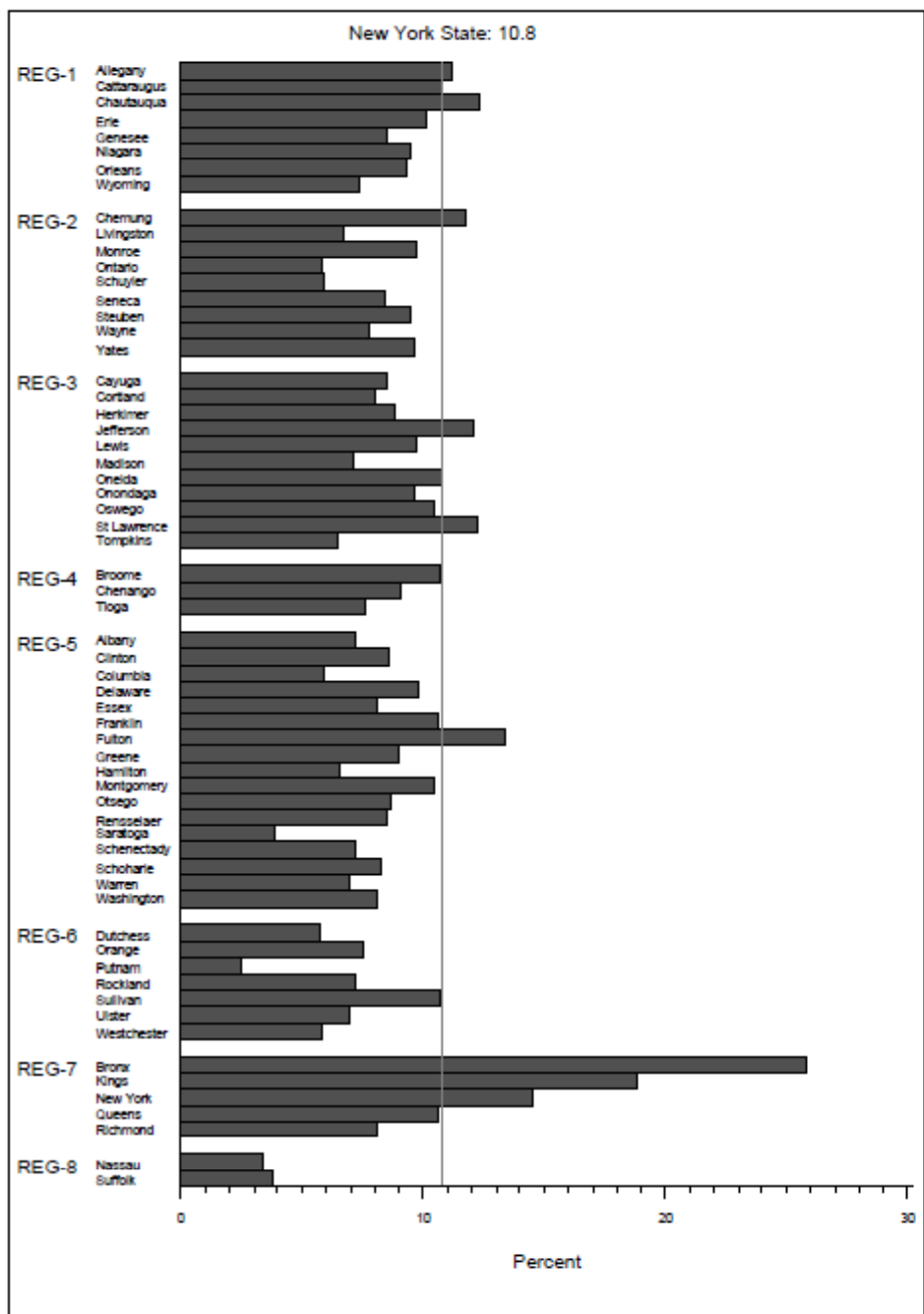
■ NYS 2000 ■ NYS 2010 ■ US 2010



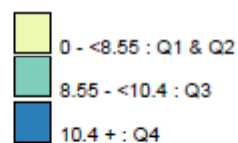
Source: U.S. Census Bureau

Note: Median Income in 2010 Inflation-adjusted dollars

Percentage of Families Living in Poverty, 2006-2010



Percent
Counties Are Shaded Based On Quartile Distribution

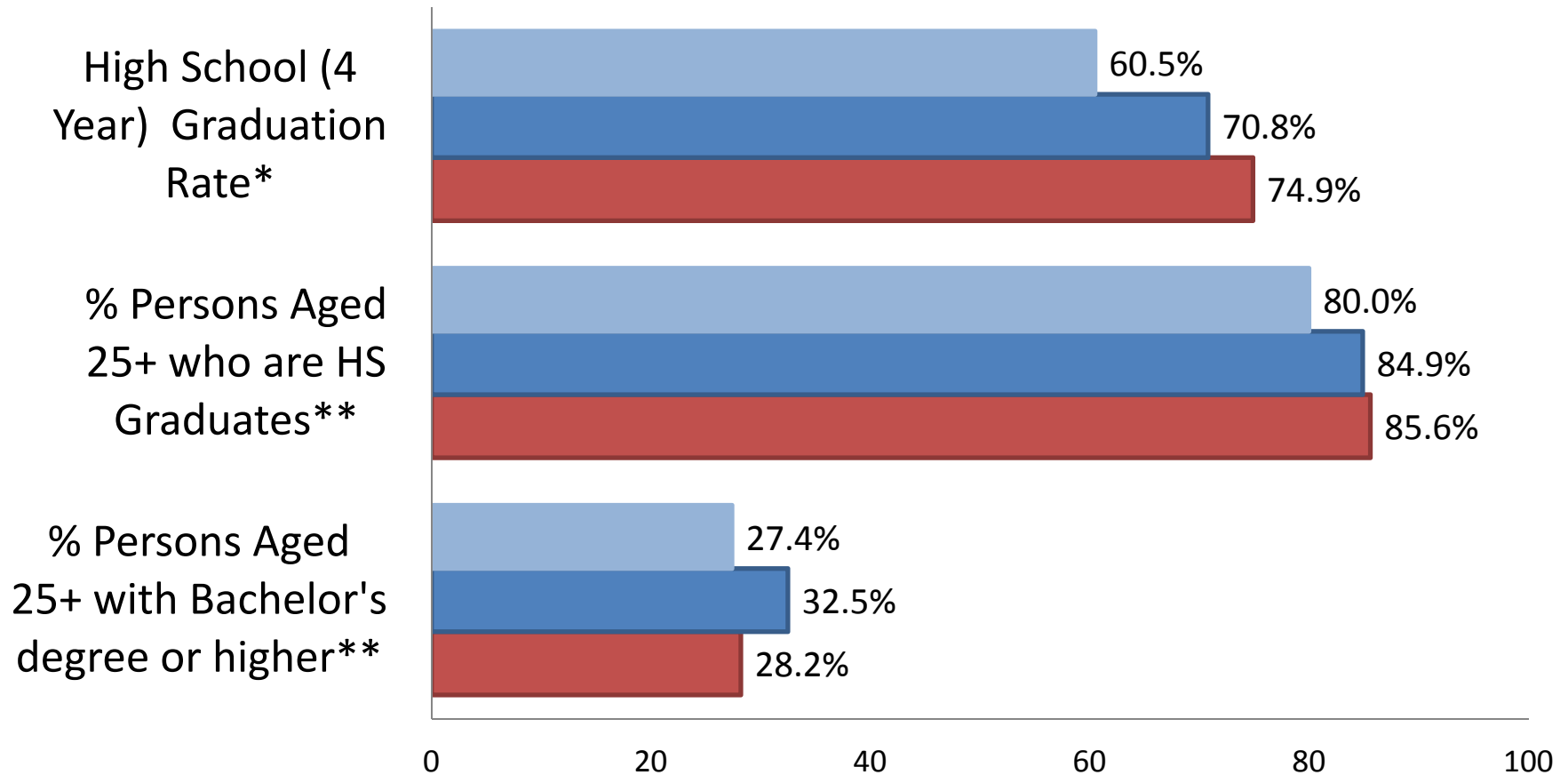


Source: U.S. Census Bureau, 2006-2010 American Community Survey

Education

New York State and U.S.

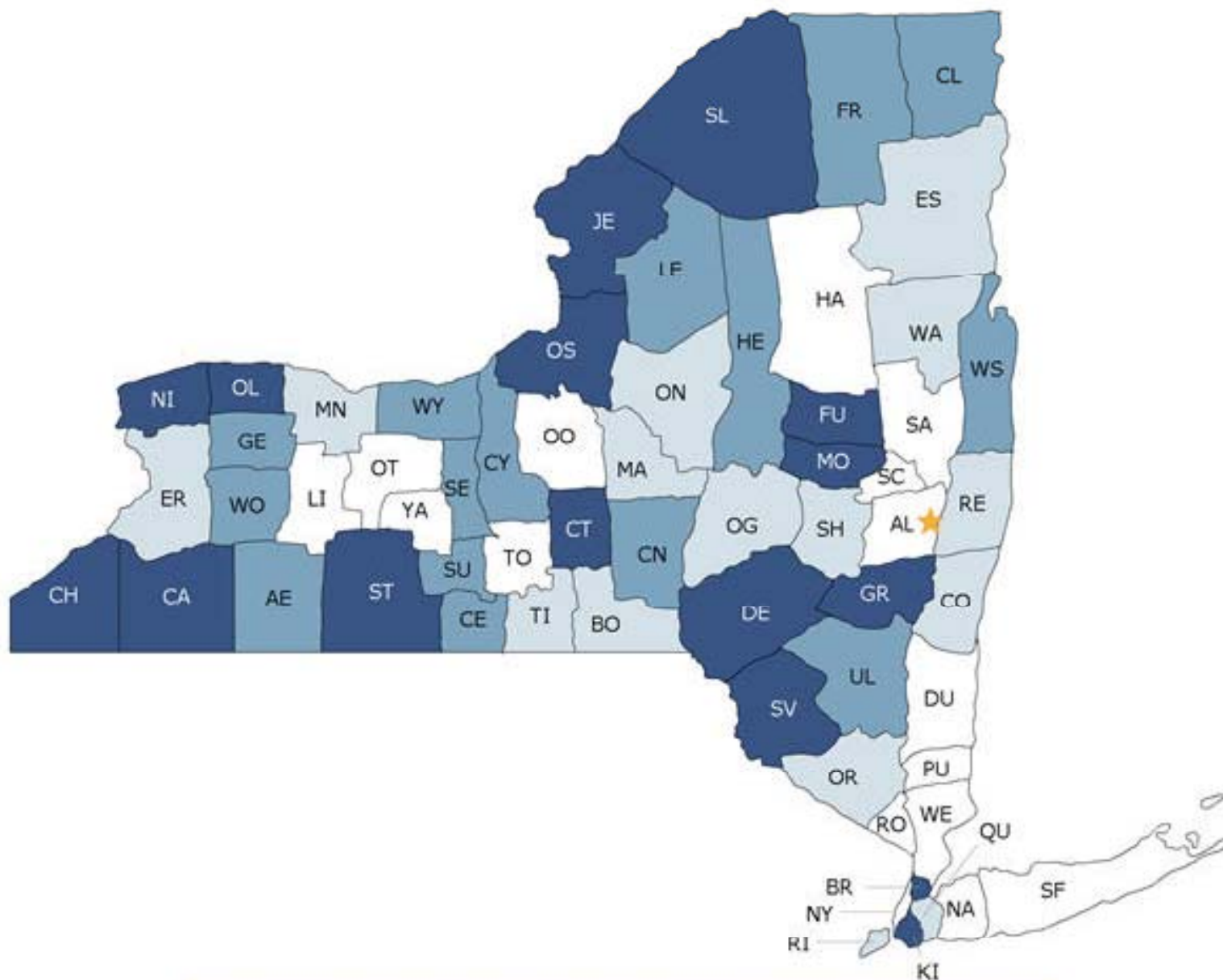
■ NYS 2000 ■ NYS 2010 ■ US 2010



*Source: National Center for Education Statistics, Data for school years 2001-2002 and 2007-2008

** U.S. Census Bureau

2011 Health Factors - New York

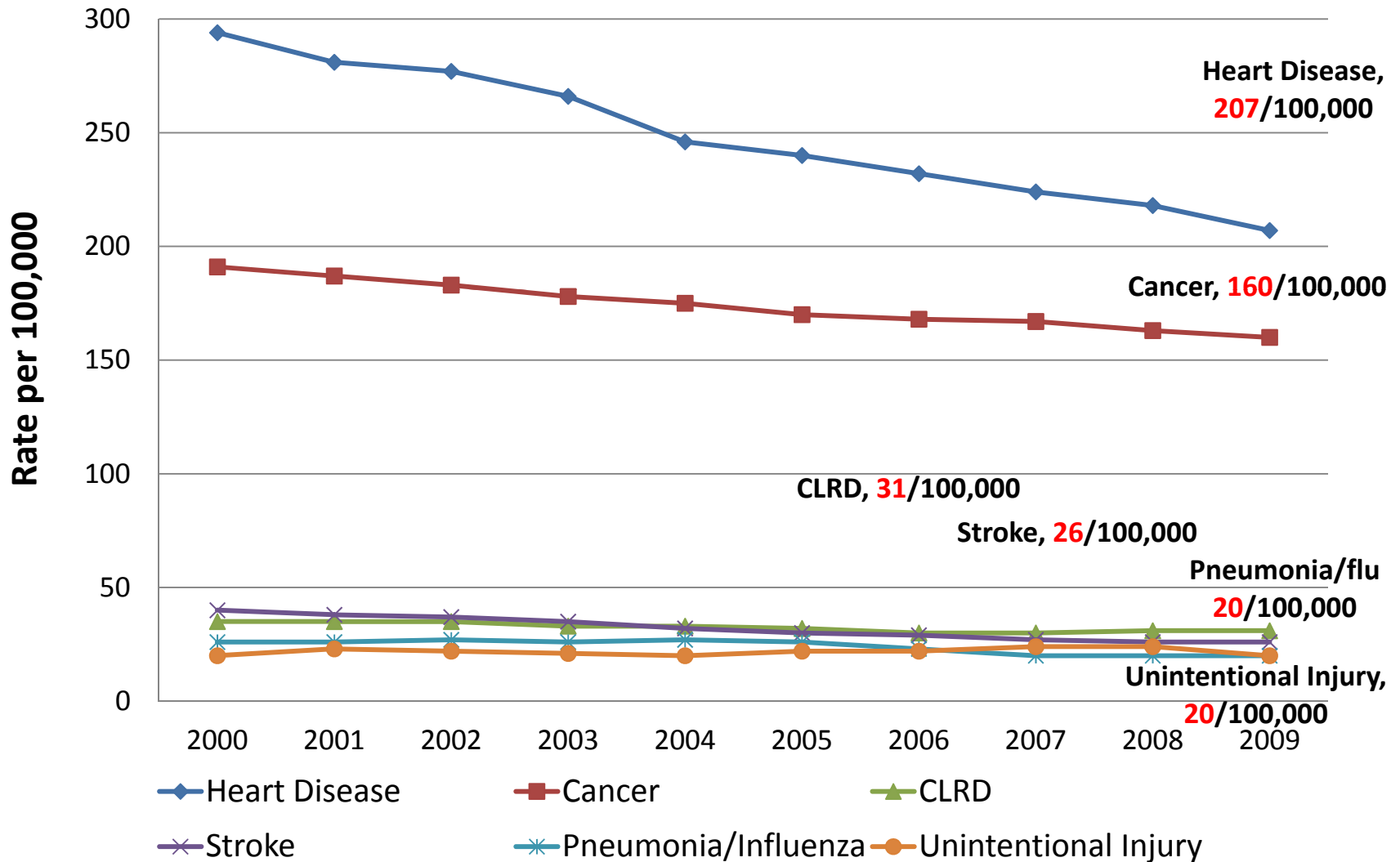


Rank 1-16 Rank 17-31 Rank 32-46 Rank 47-62

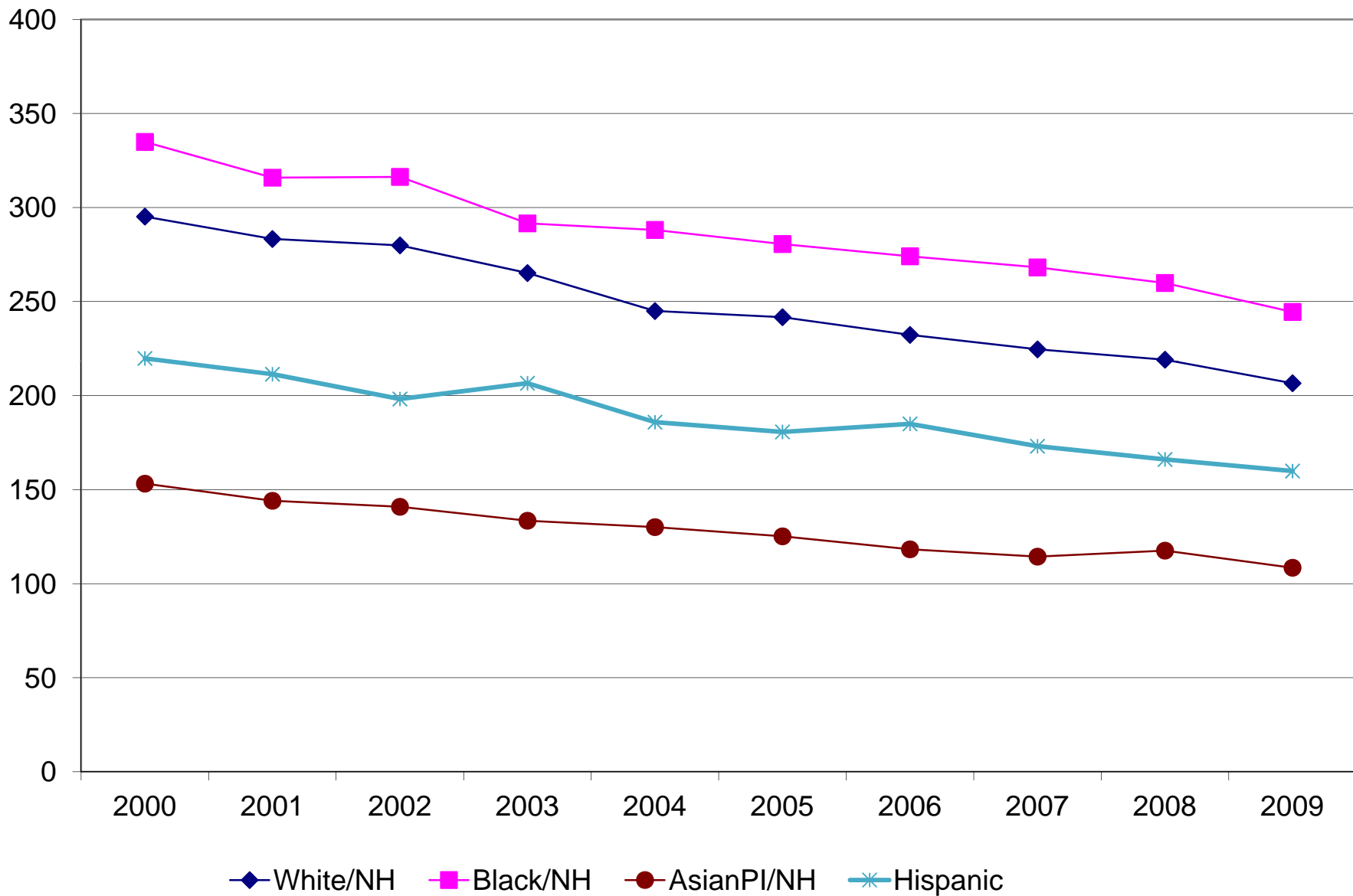
General Health Description

New York State

Leading Causes of Death, New York State, 2000 - 2009



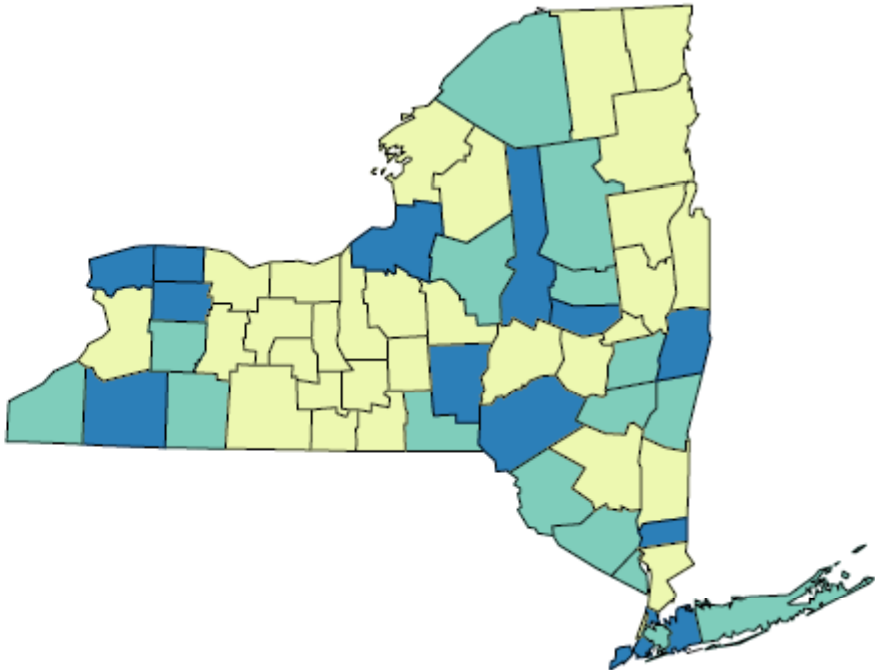
Age-Adjusted* Heart Disease Death Rate per 100,000 by Race/Ethnicity, New York State, 2000-2009



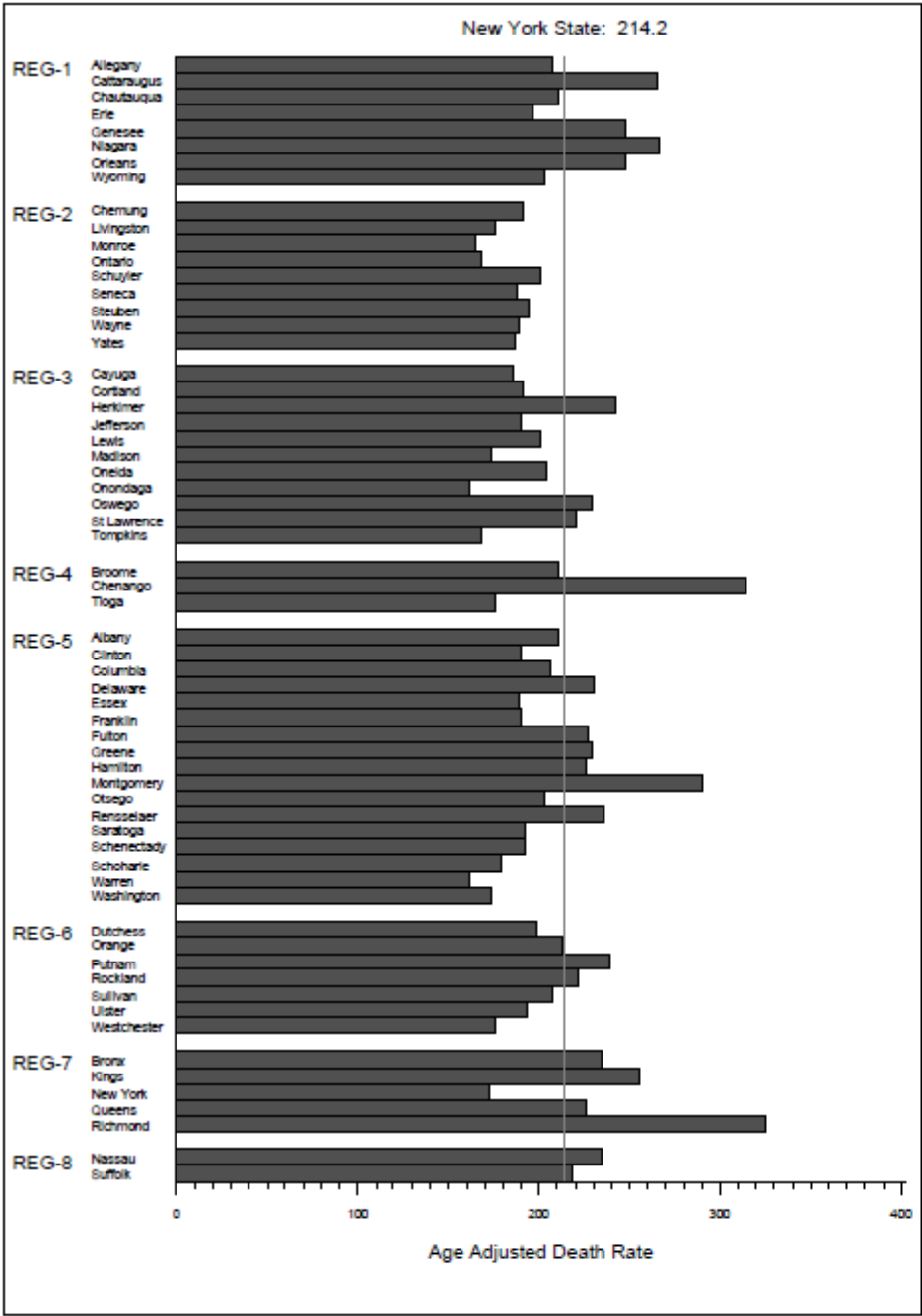
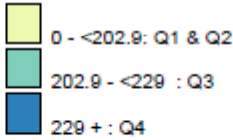
* Age-adjusted to U.S. Census 2000 population

Diseases of The Heart

Age Adjusted Annual Death Rate Per 100,000 Residents
2007-2009 (Adjusted To 2000 United States Population)

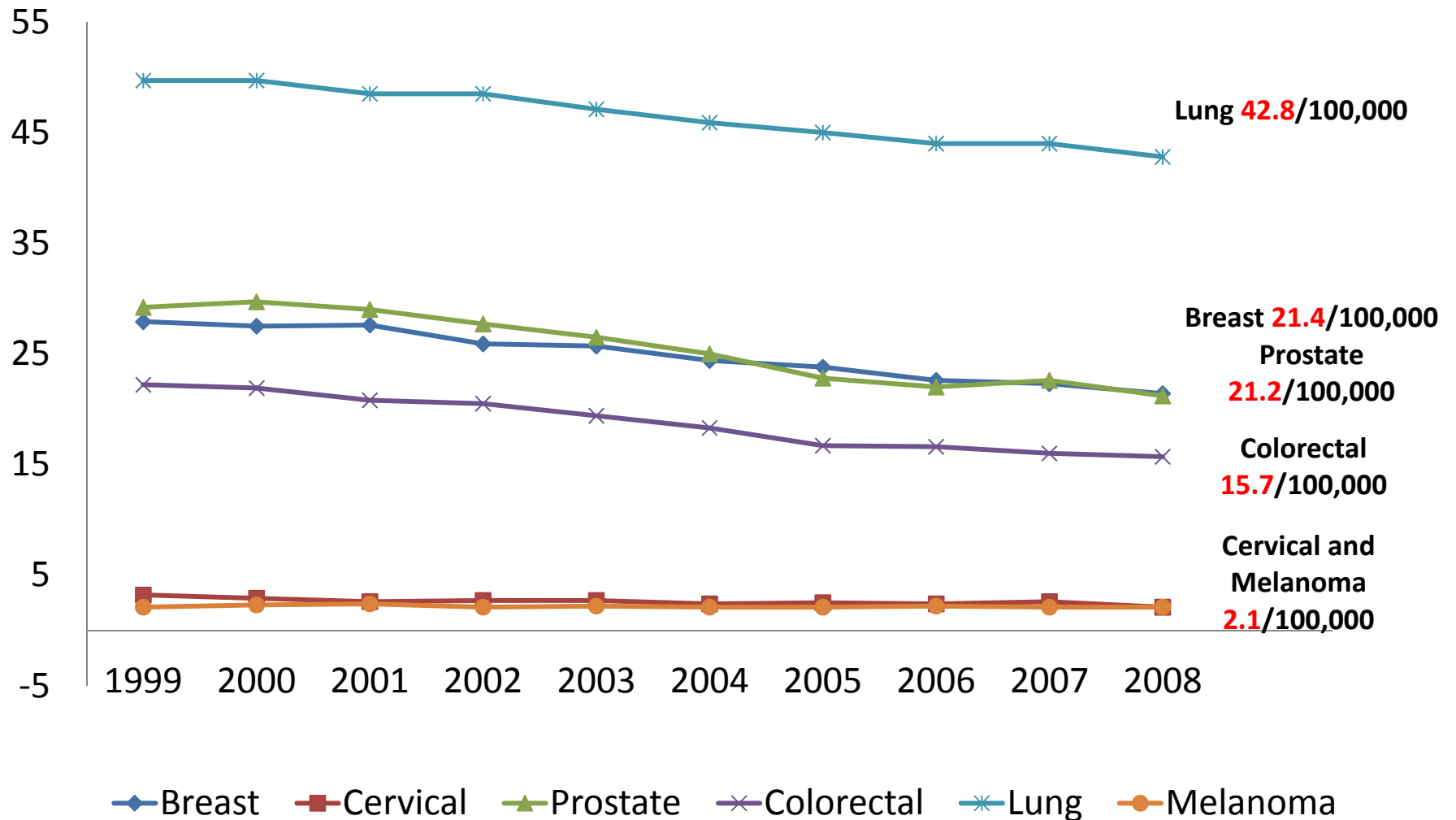


Age Adjusted Death Rate
Counties Are Shaded Based On Quartile Distribution

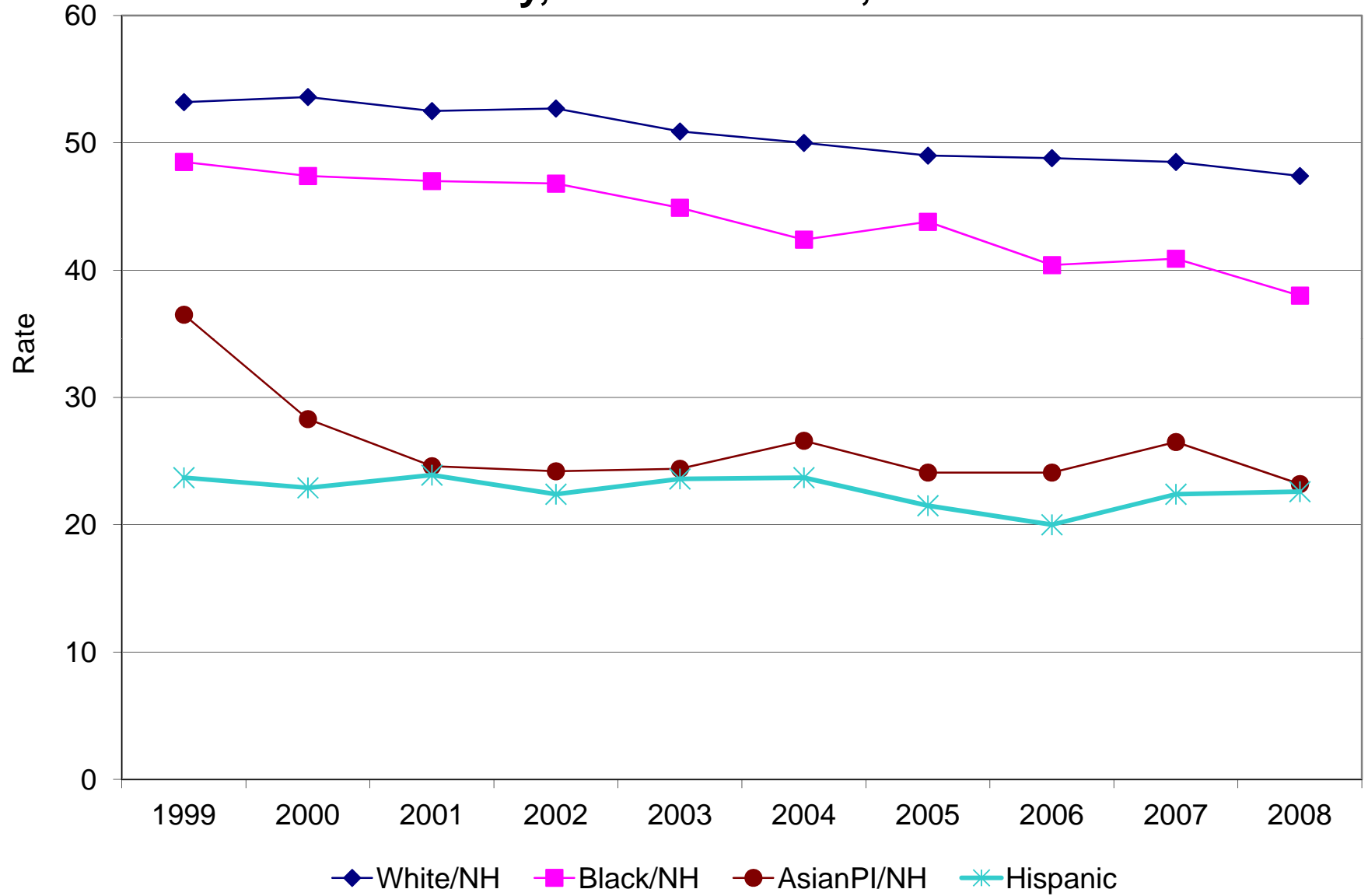


Source: Vital Statistics

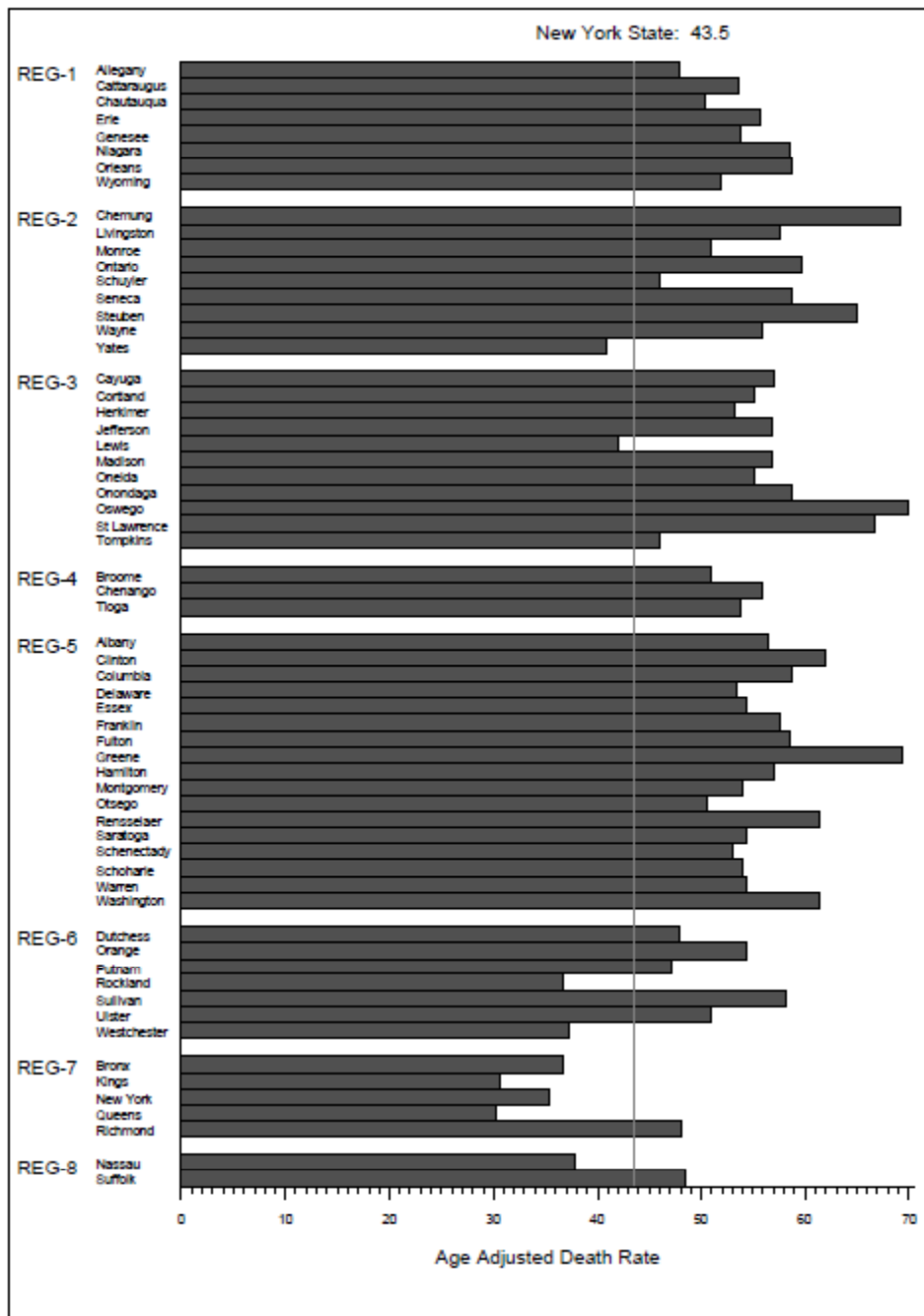
Age-Adjusted Cancer Mortality Rates per 100,000 by Type of Cancer, New York State, 1999-2008



Age-adjusted Lung Cancer Mortality per 100,000 by Race/Ethnicity, New York State, 1999-2008

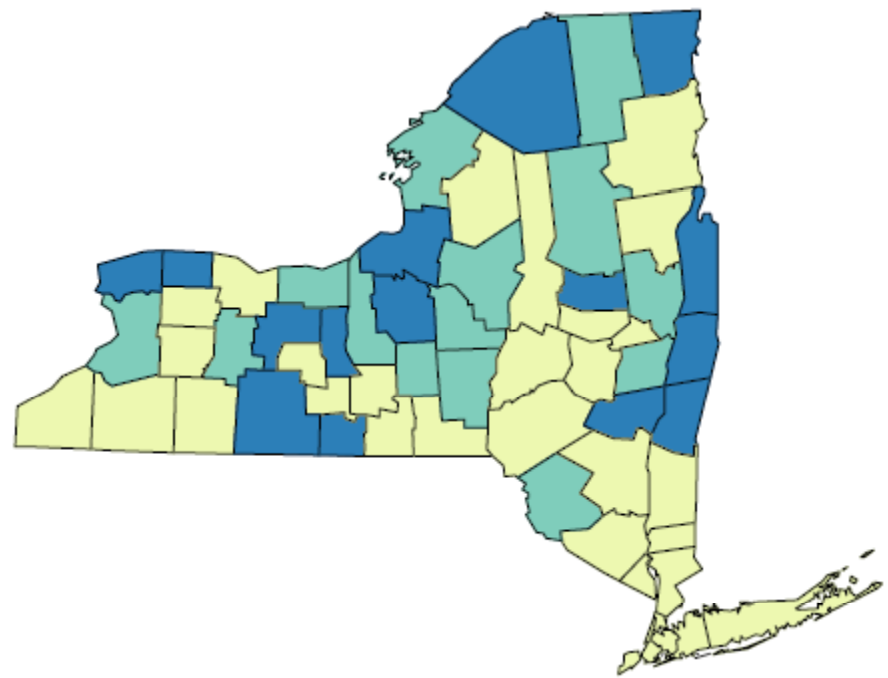


* Age-adjusted to U.S. Census 2000 population

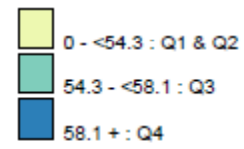


Lung & Bronchus Cancer

Age Adjusted Annual Death Rate Per 100,000 Residents
2005-2009 (Adjusted To 2000 United States Population)

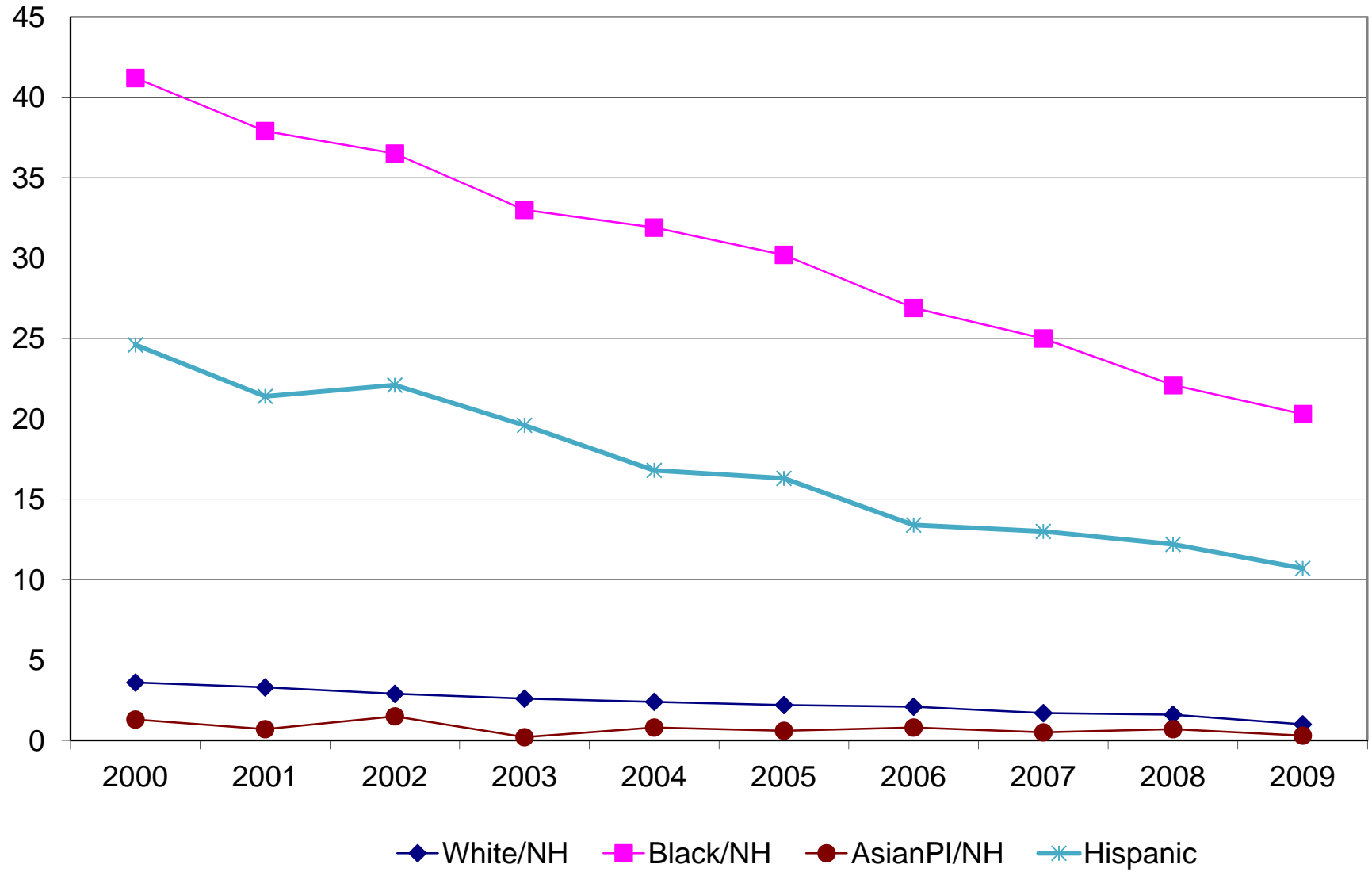


Age Adjusted Death Rate
Counties Are Shaded Based On Quartile Distribution



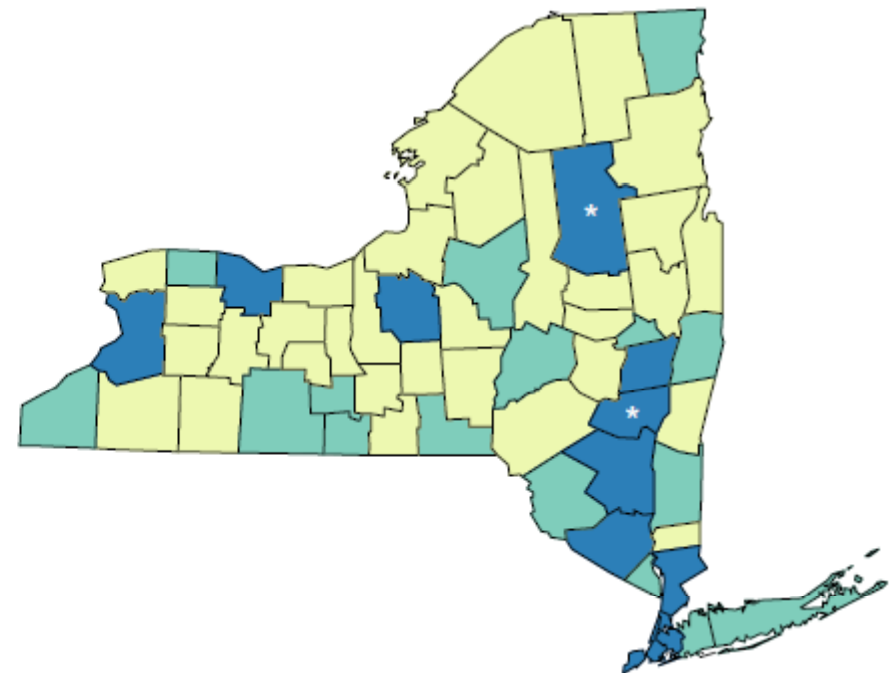
Source: Vital Statistics

Age-Adjusted* HIV/AIDS Death Rate per 100,000 by Race/Ethnicity, New York State, 2000-2009

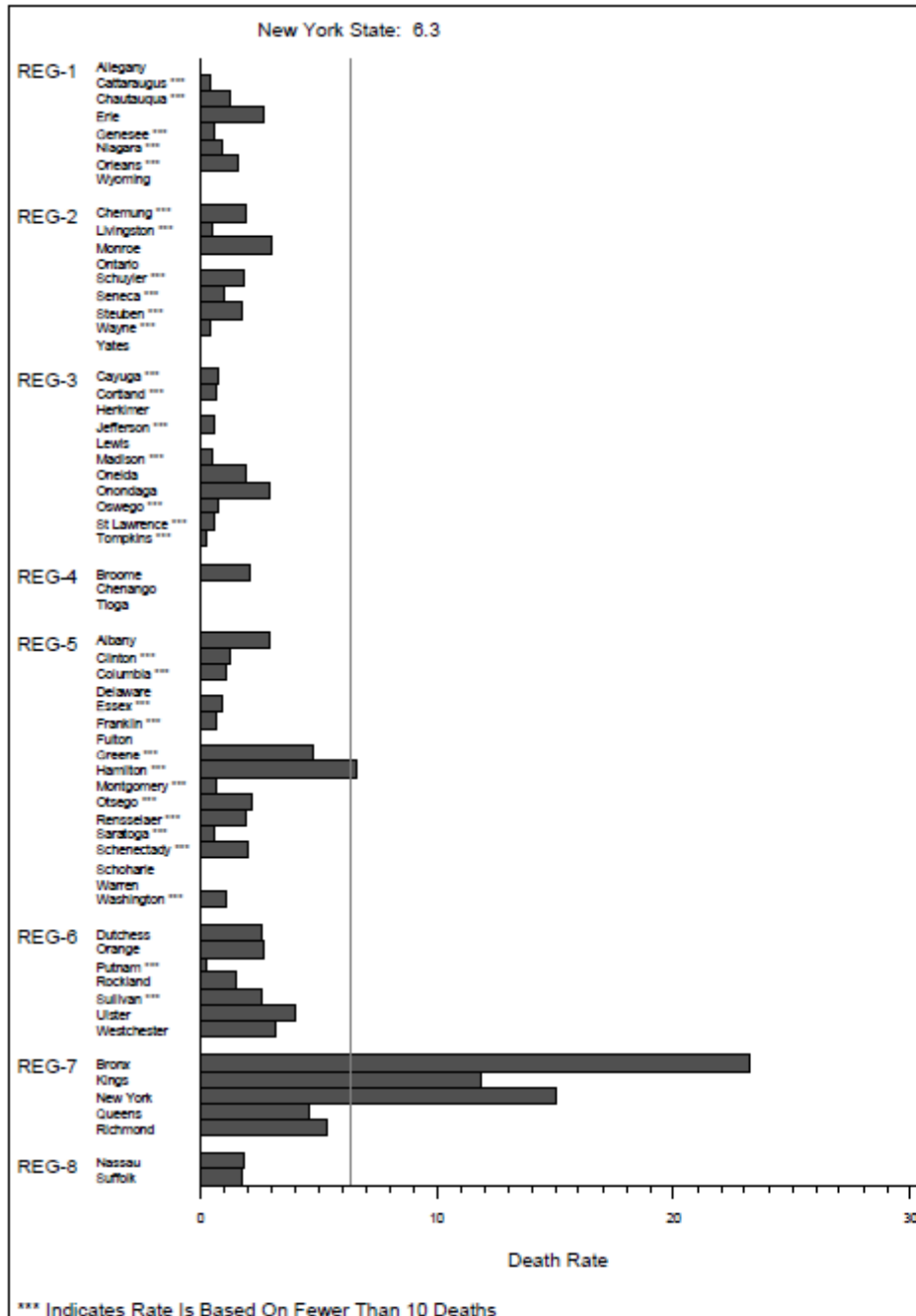
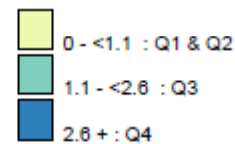


* Age-adjusted to U.S. Census 2000 population

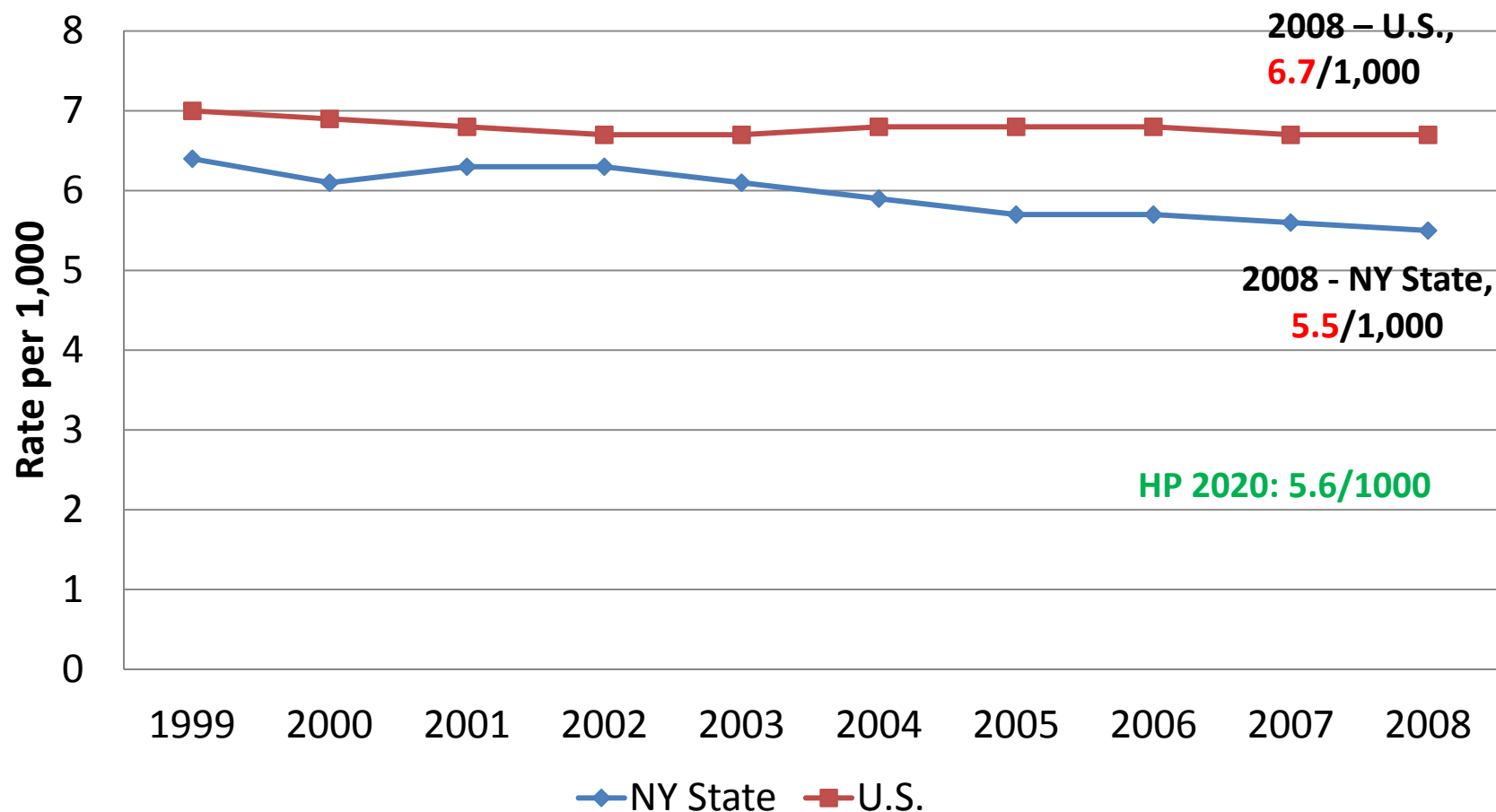
AIDS Annual Death Rate Per 100,000 Residents 2007-2009



Death Rate
Counties Are Shaded Based On Quartile Distribution
(* Indicates A County With A High Rate But Fewer Than 10 Deaths)



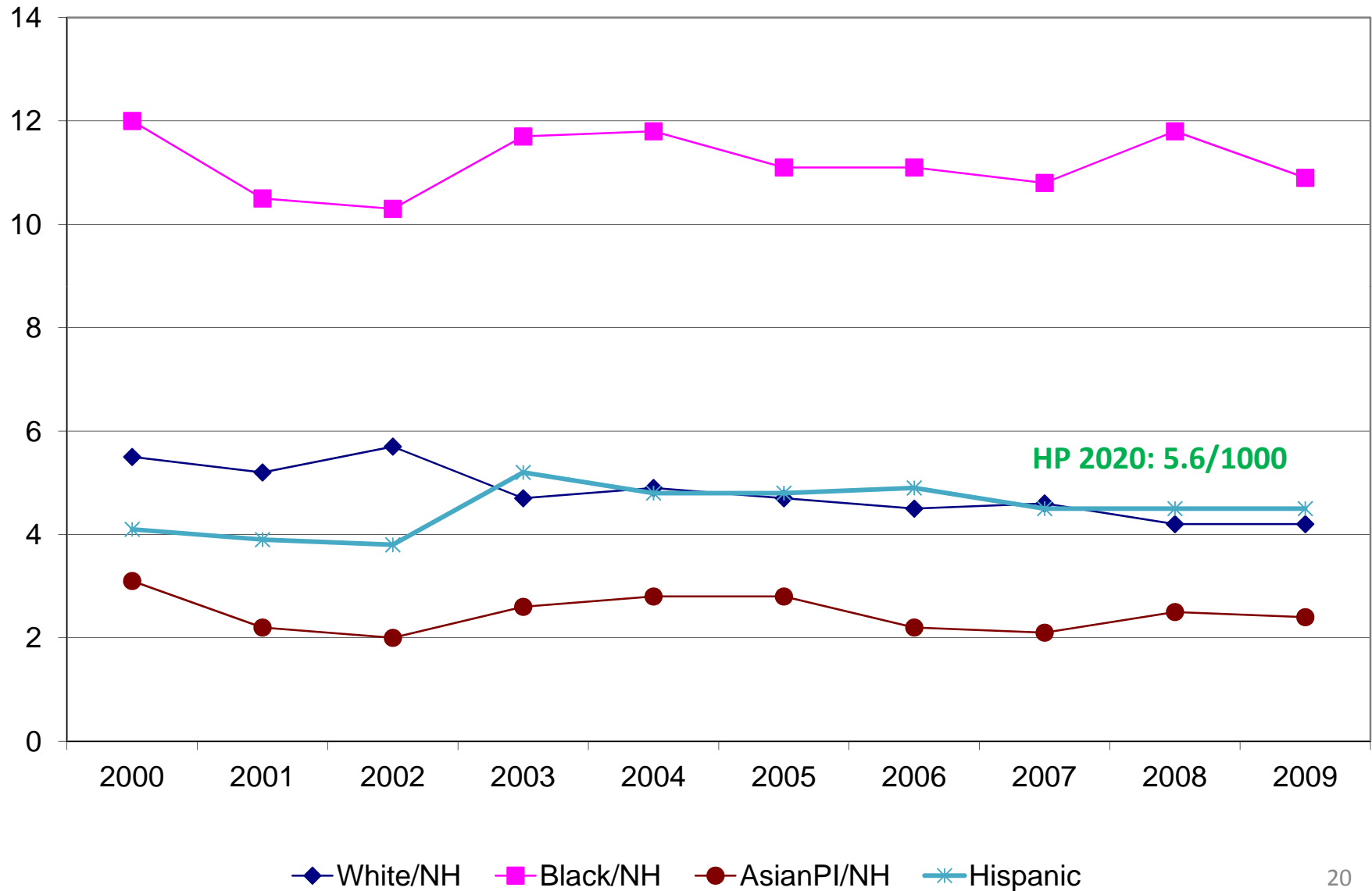
Infant Mortality Rate, New York State and U.S., 2002-2011

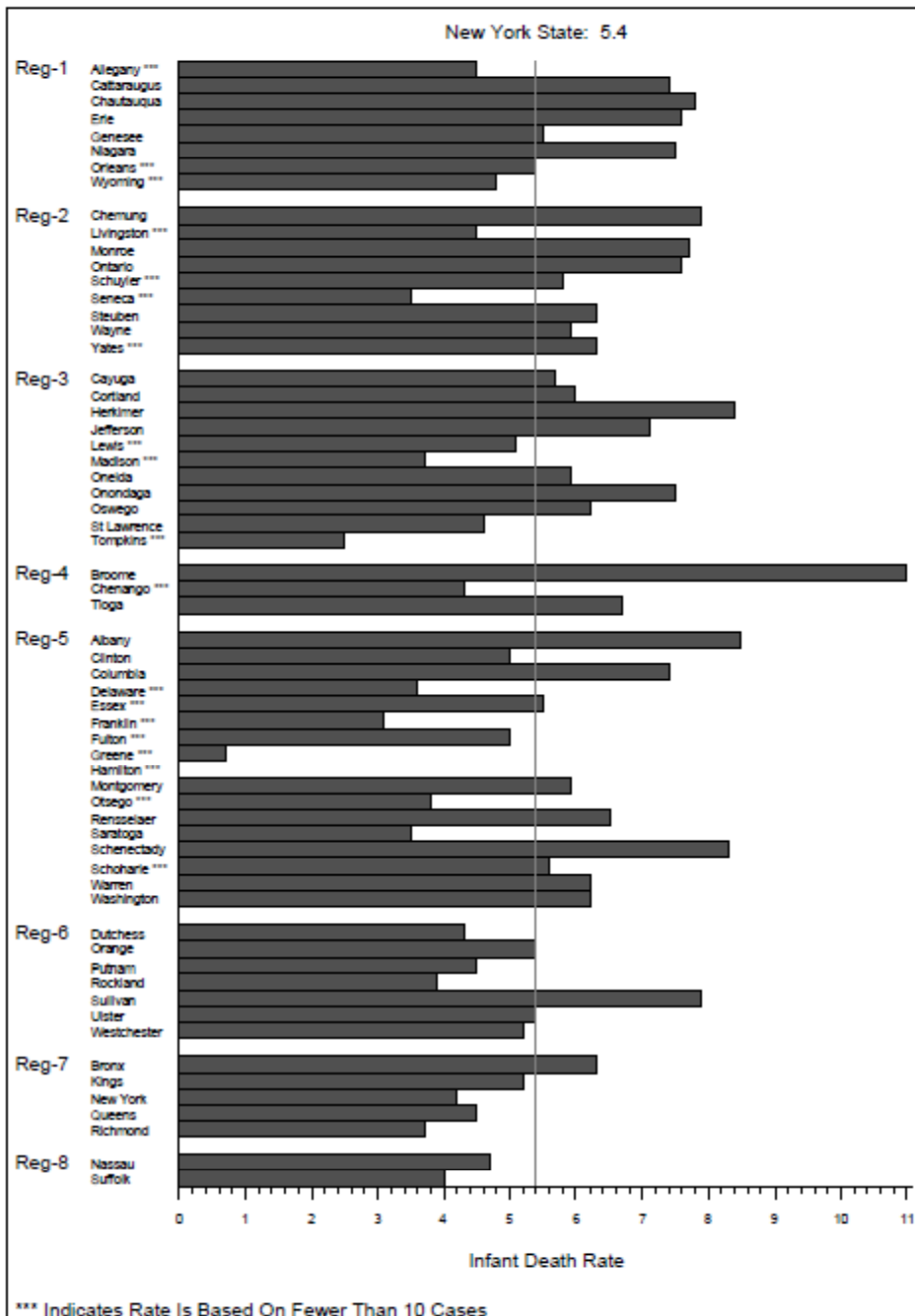


Source: America's Health Rankings, 2011

Note: Data are presented by report year and include data years: (1998-1999) - (2007-2008).

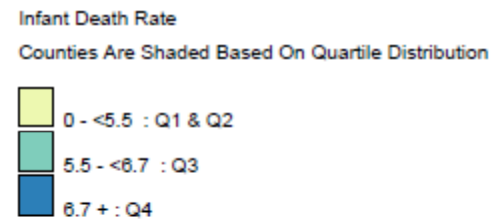
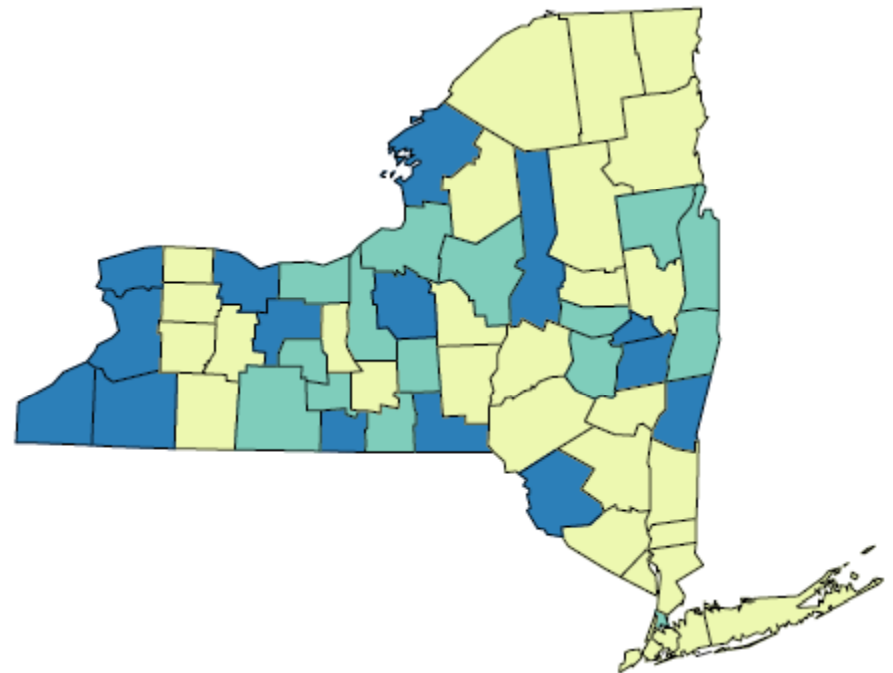
Infant Mortality Rate per 1,000 Live Births by Race/Ethnicity, New York State, 2000-2009



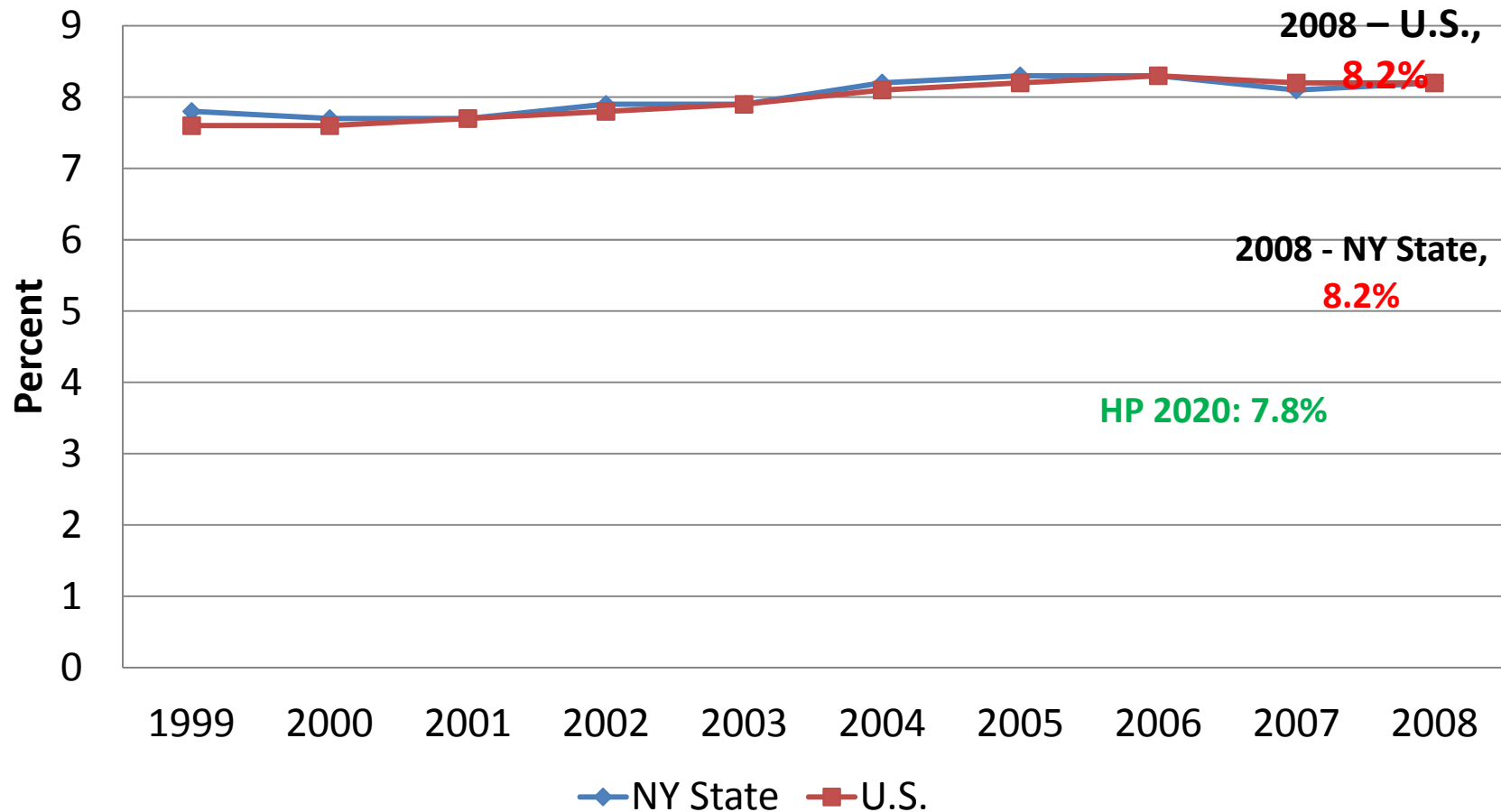


Infant Mortality

Rate Per 1,000 Live Births
2007-2009



Low Birthweight* Percentage, New York State and U.S., 1999-2008

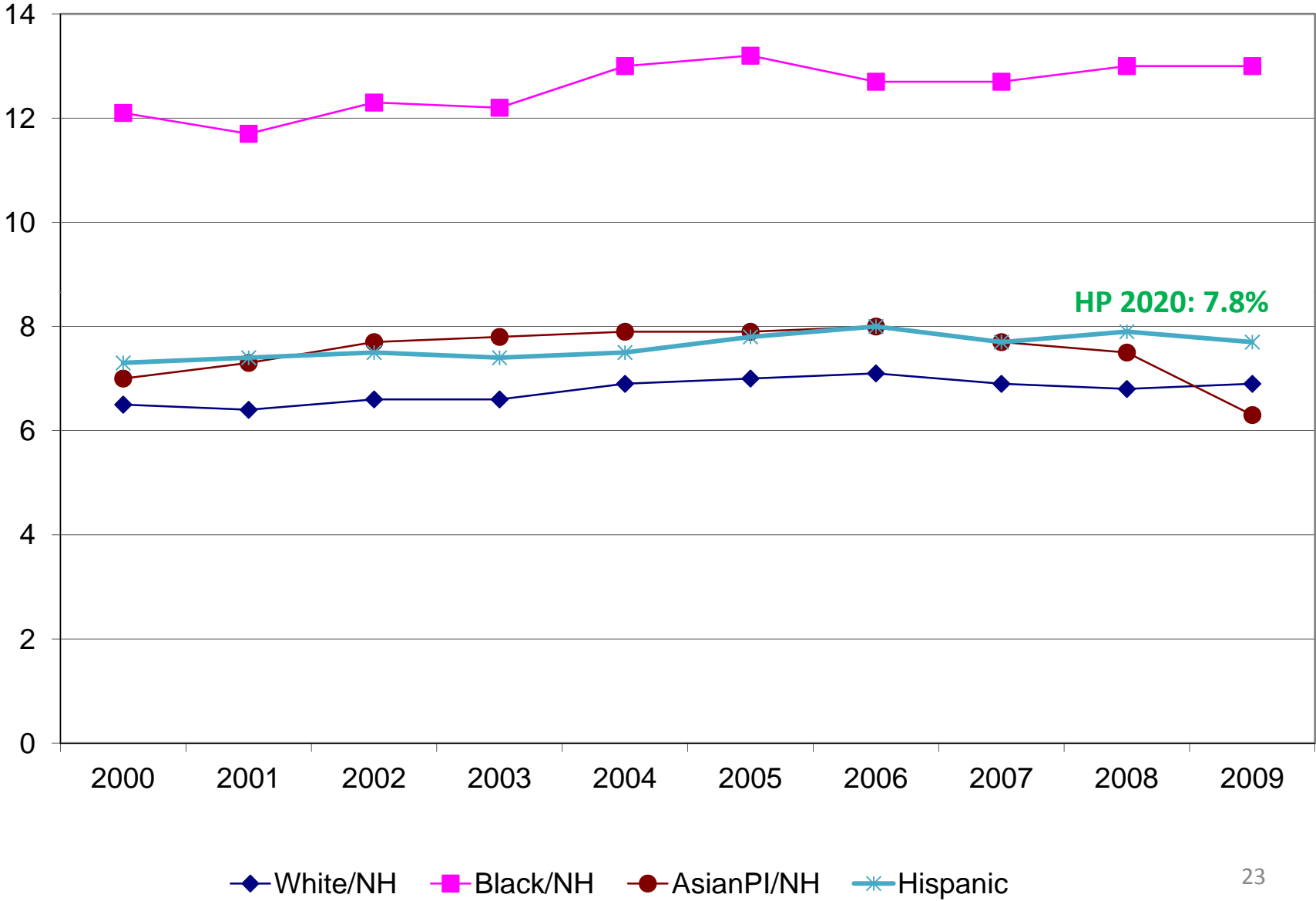


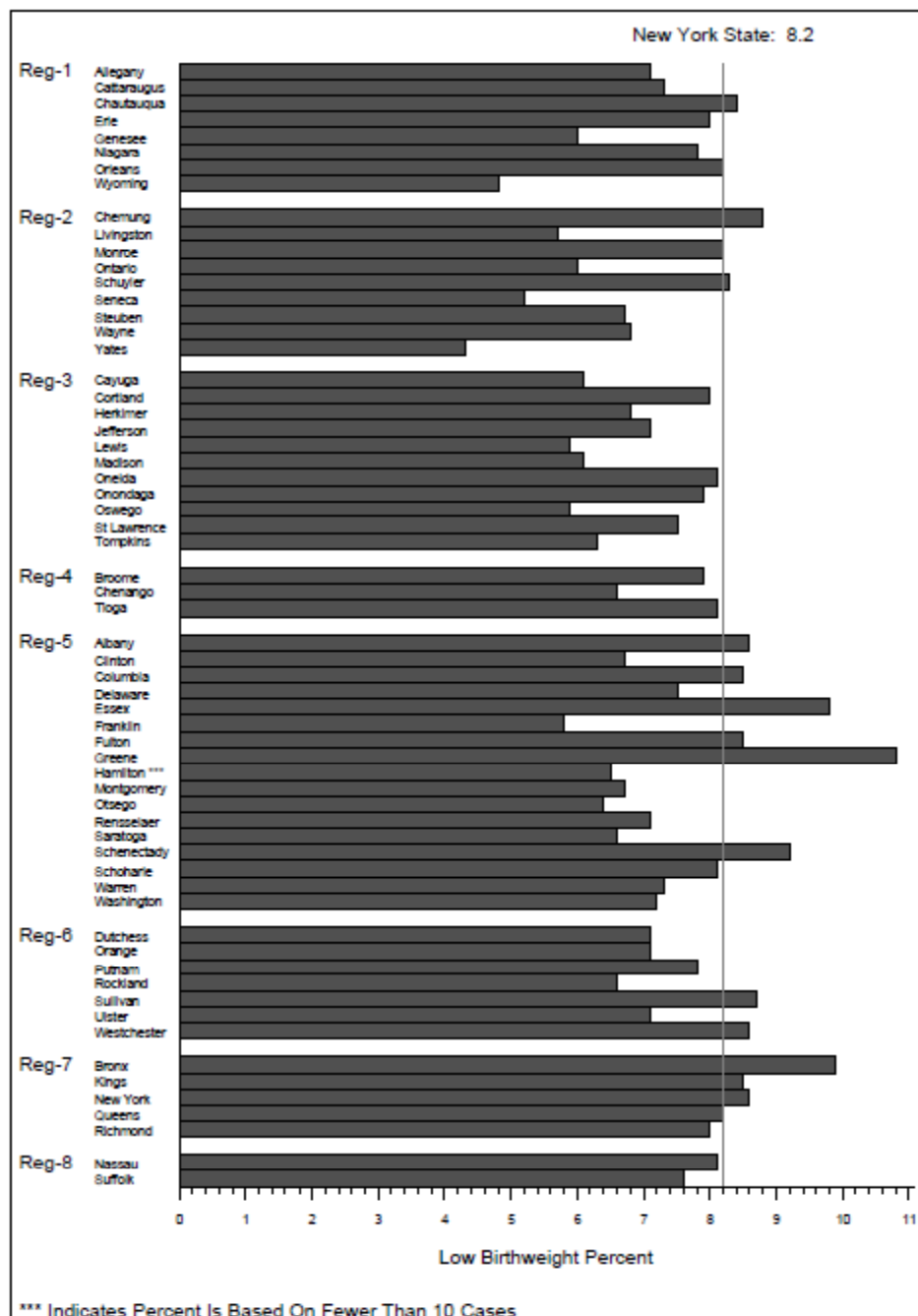
* Low birthweight births are births born weighing less than 2500 grams.

Source: America's Health Rankings, 2011

Note: Data are presented by report year and include data years: 1999 - 2008.

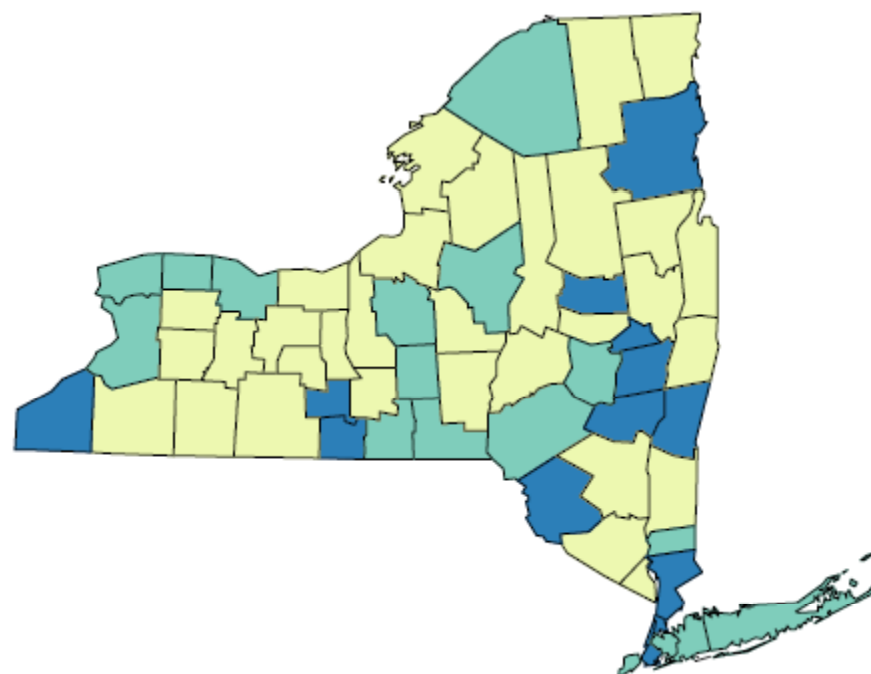
Percentage of Low Birthweight Births by Race/Ethnicity, New York State, 2000-2009





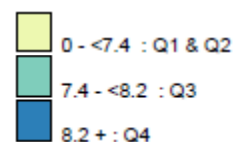
Low Birthweight Births (<2500 Grams)

Percent of Live Births
2007-2009

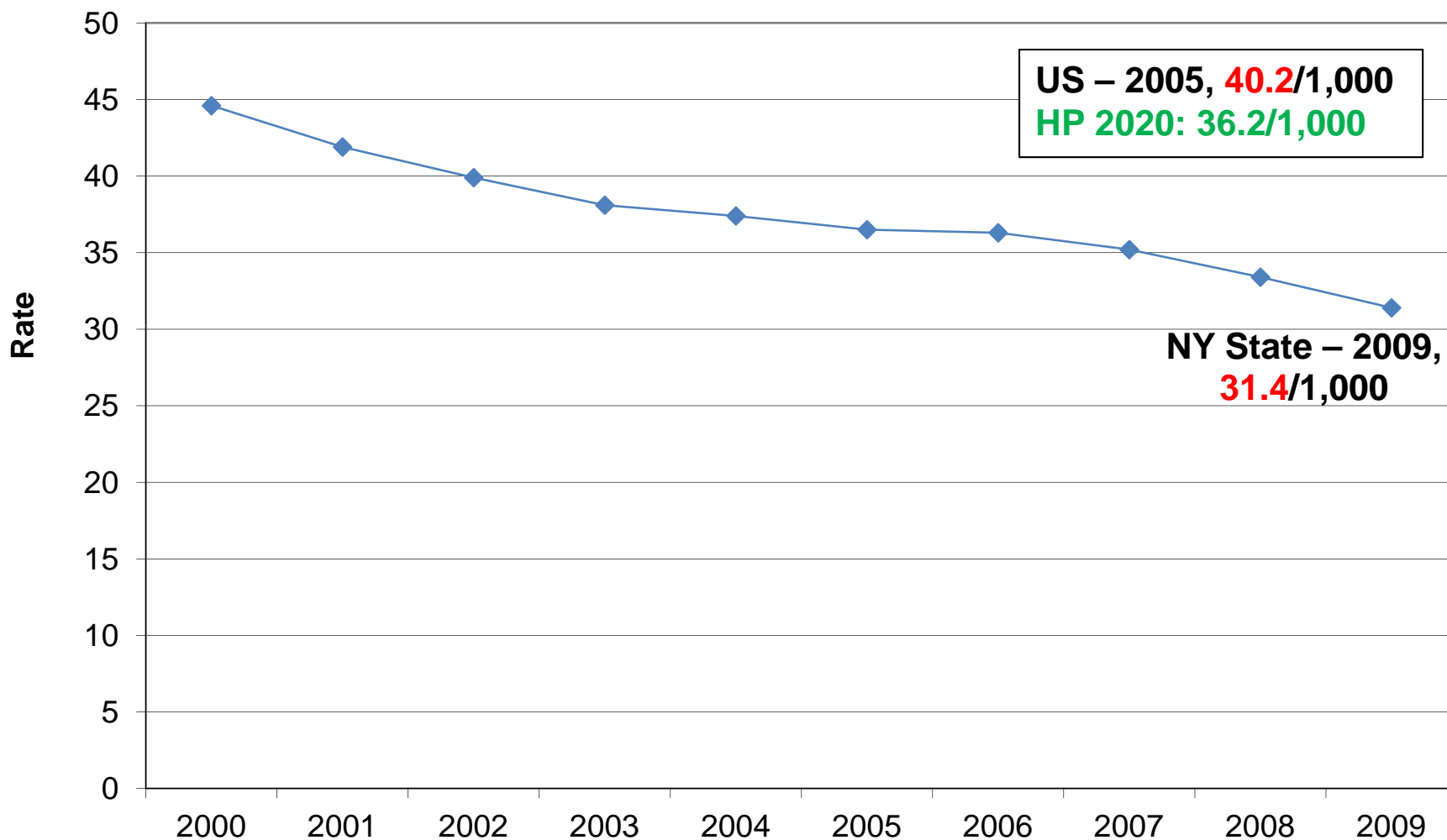


Low Birthweight Percent

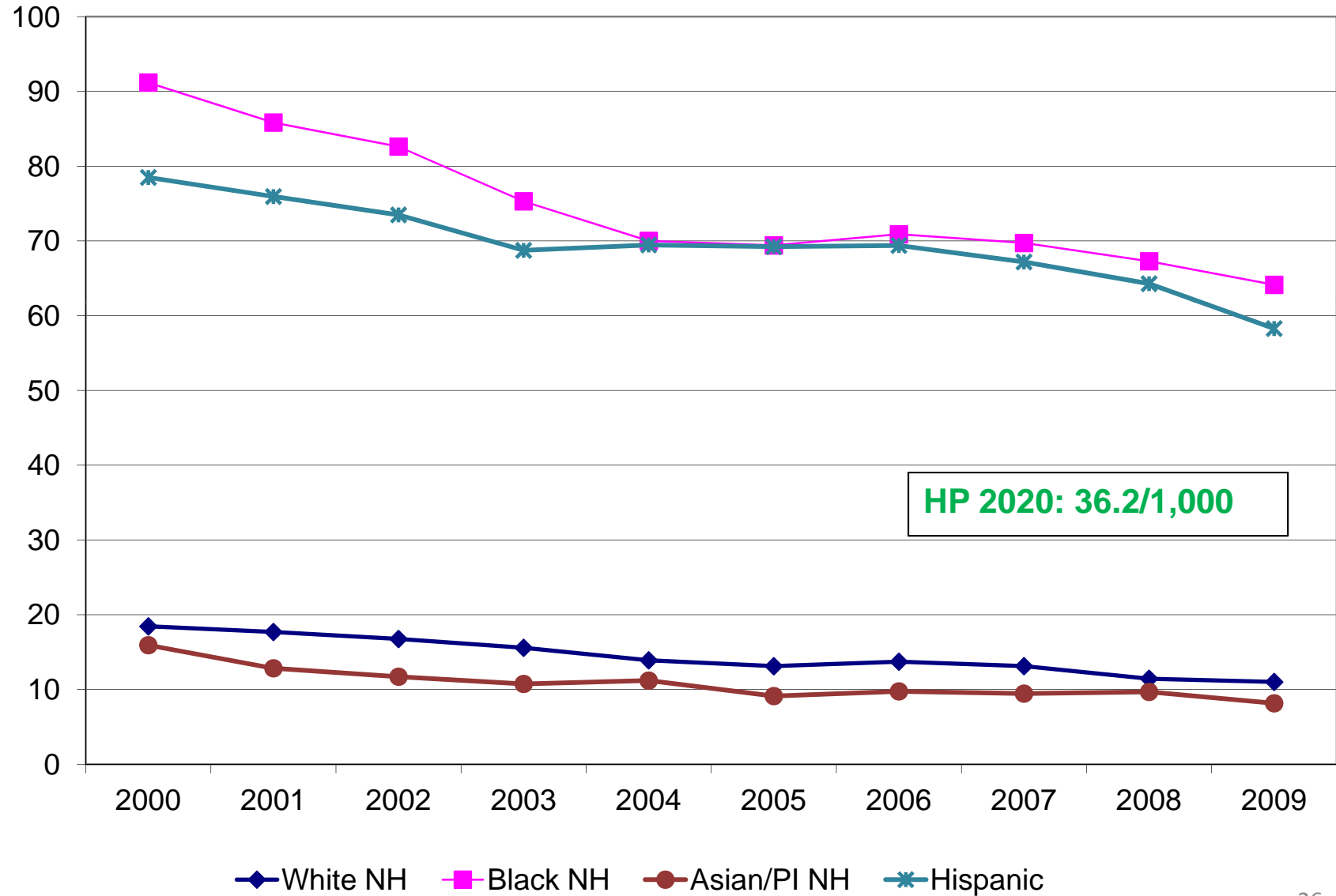
Counties Are Shaded Based On Quartile Distribution



Teen Pregnancies per 1,000 Females Ages 15-17, New York State, 2000-2009

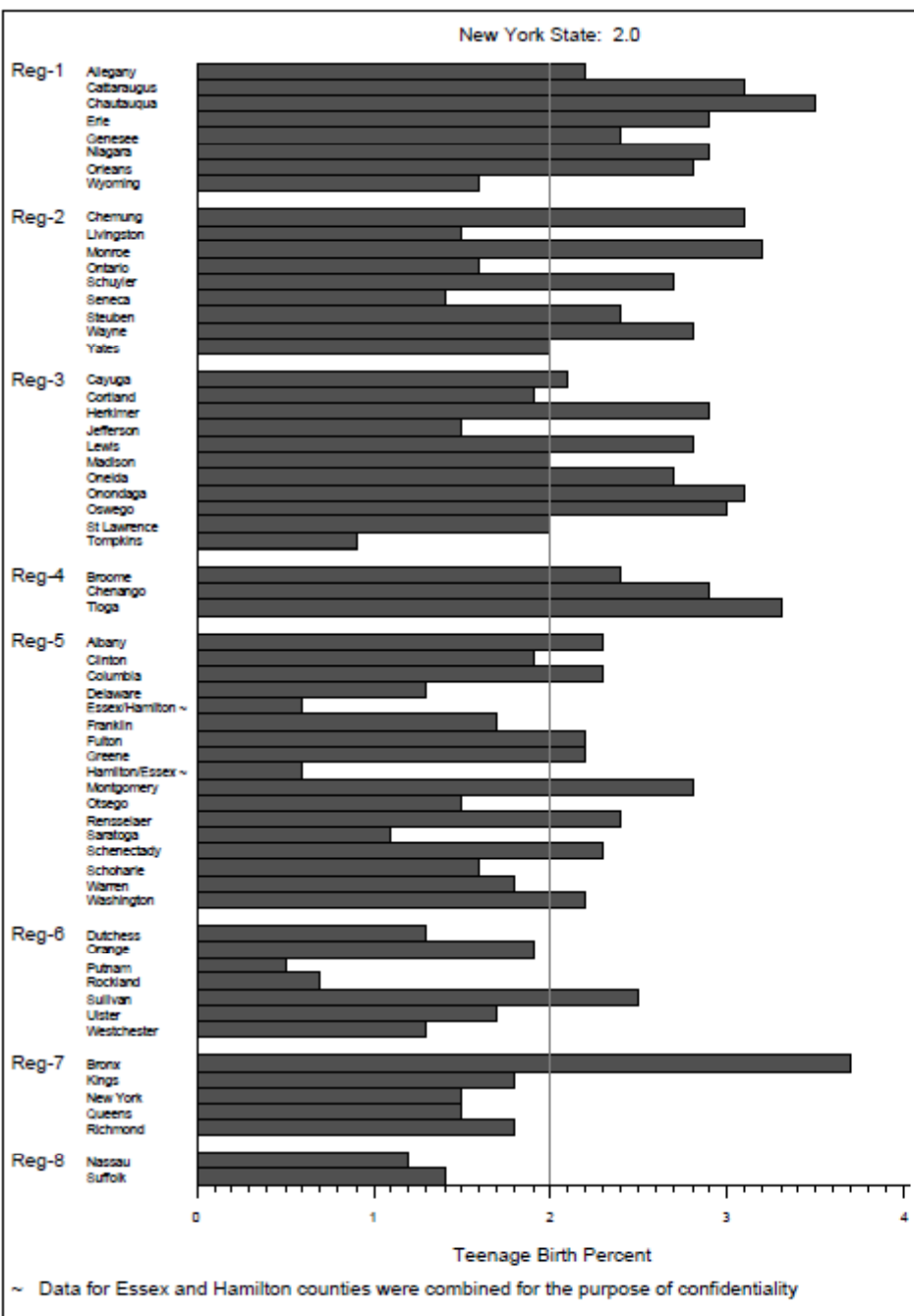
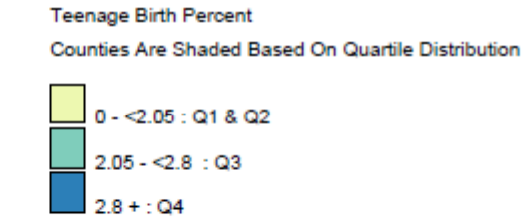
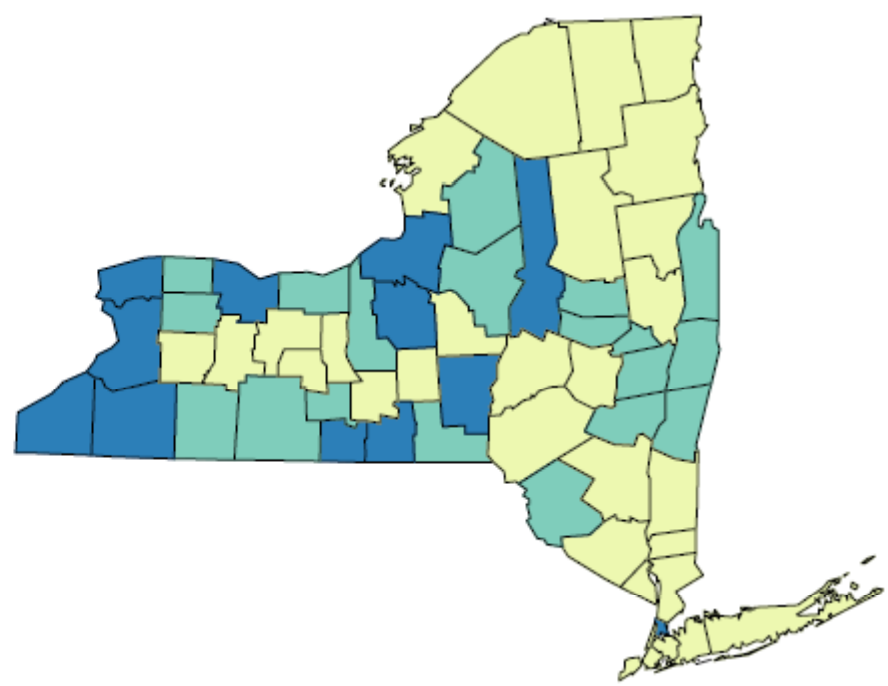


Teen Pregnancies per 1,000 Females 15-17 by Race/Ethnicity, New York State, 2000-2009



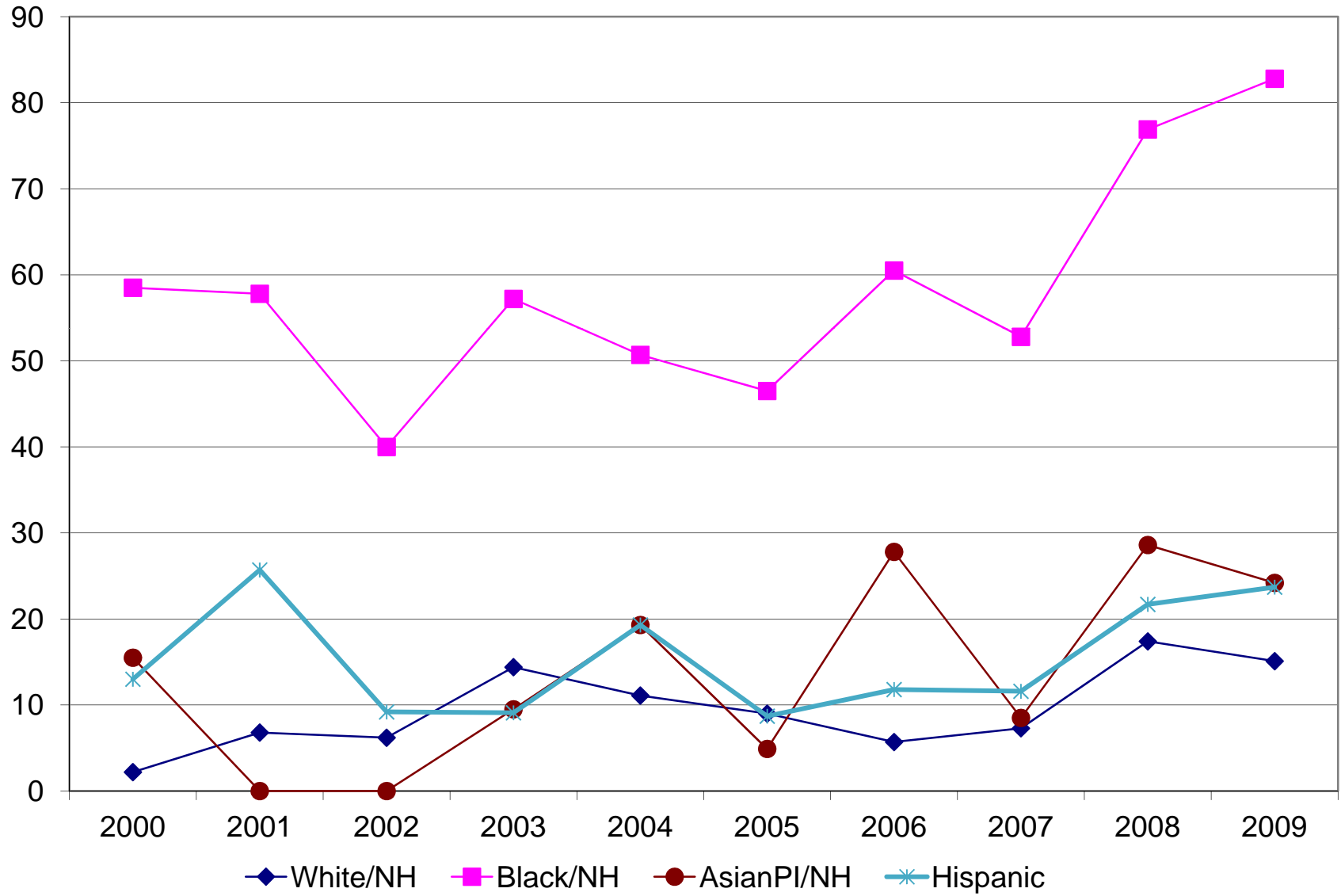
Teenage Births (Age 15-17)

Percent of Live Births
2007-2009

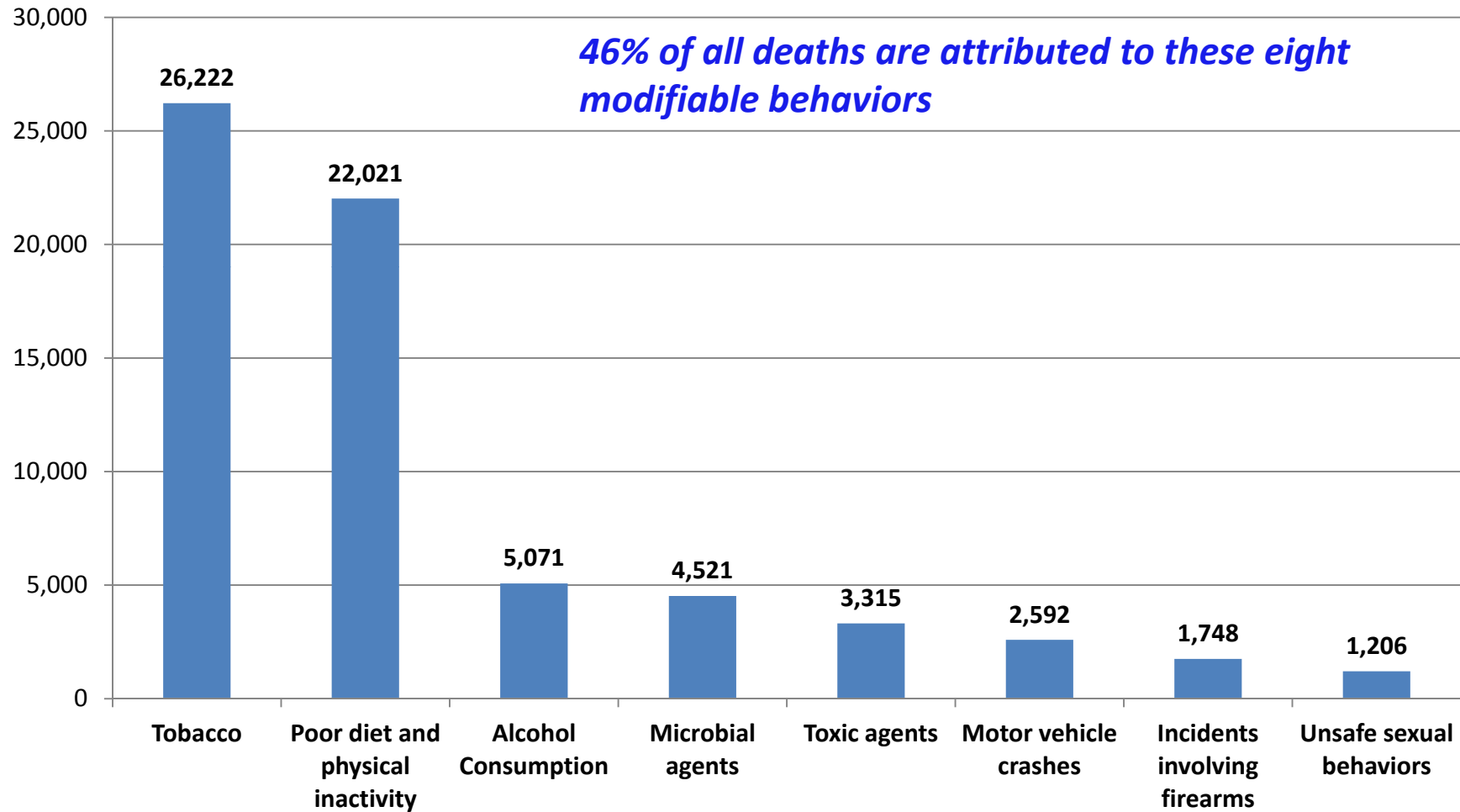


Source: Vital Statistics

Maternal Mortality Rate per 100,000 Live Births by Race/Ethnicity, New York State, 2000-2009

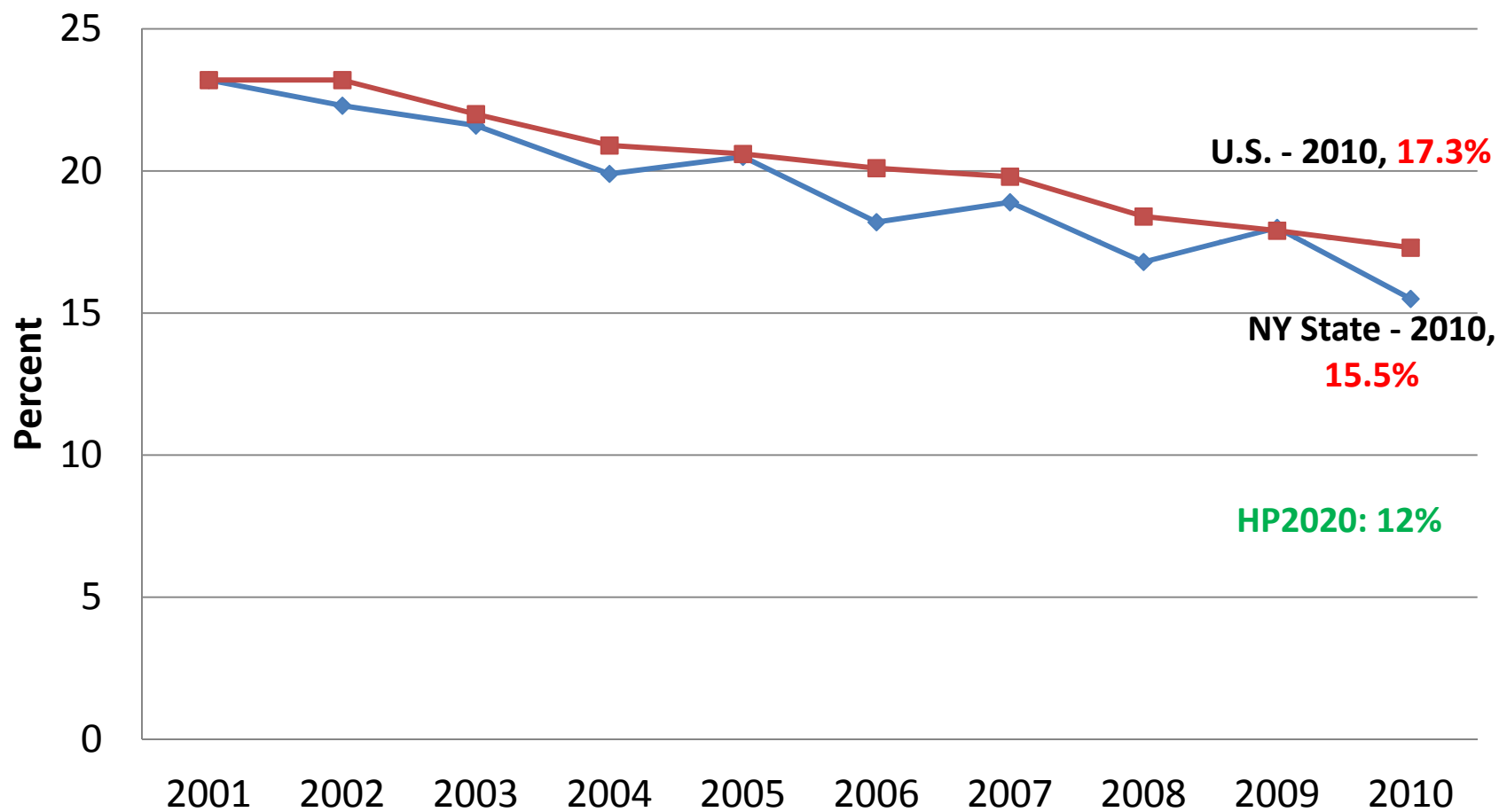


Estimated Number of Deaths Due to Modifiable Behaviors, New York State, 2009

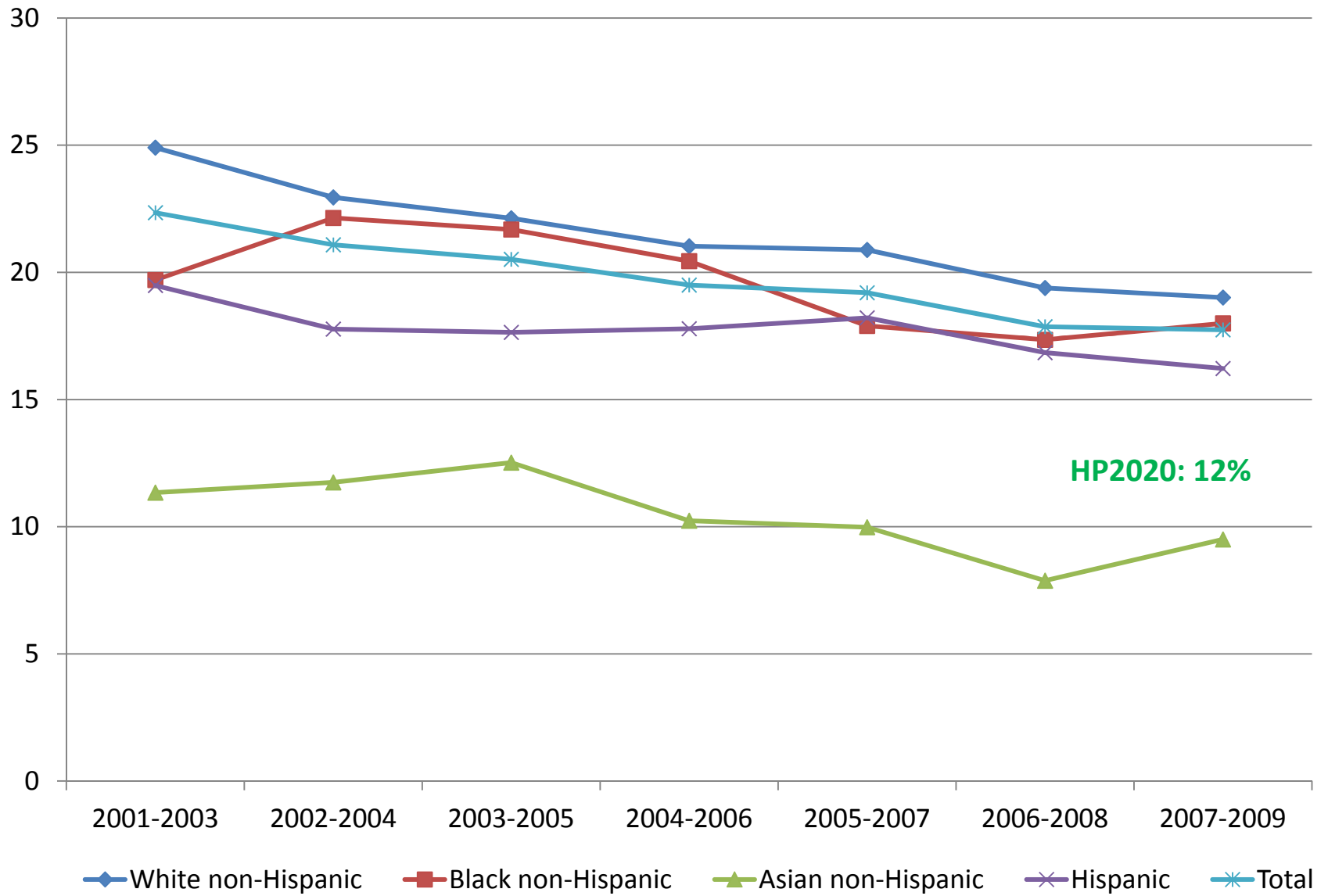


Estimates were extrapolated using the results published in "Actual Causes of Death in the United States, 2000", JAMA, March 2004, 291 (10) and NYS 2009 death data

Percentage of Adults Who are Current Smokers, New York State and U.S., 2001-2010



Age-adjusted Percentage of Adults 18 Years and Older Who Were Current Smokers by Race/Ethnicity, New York State, 2001-2009

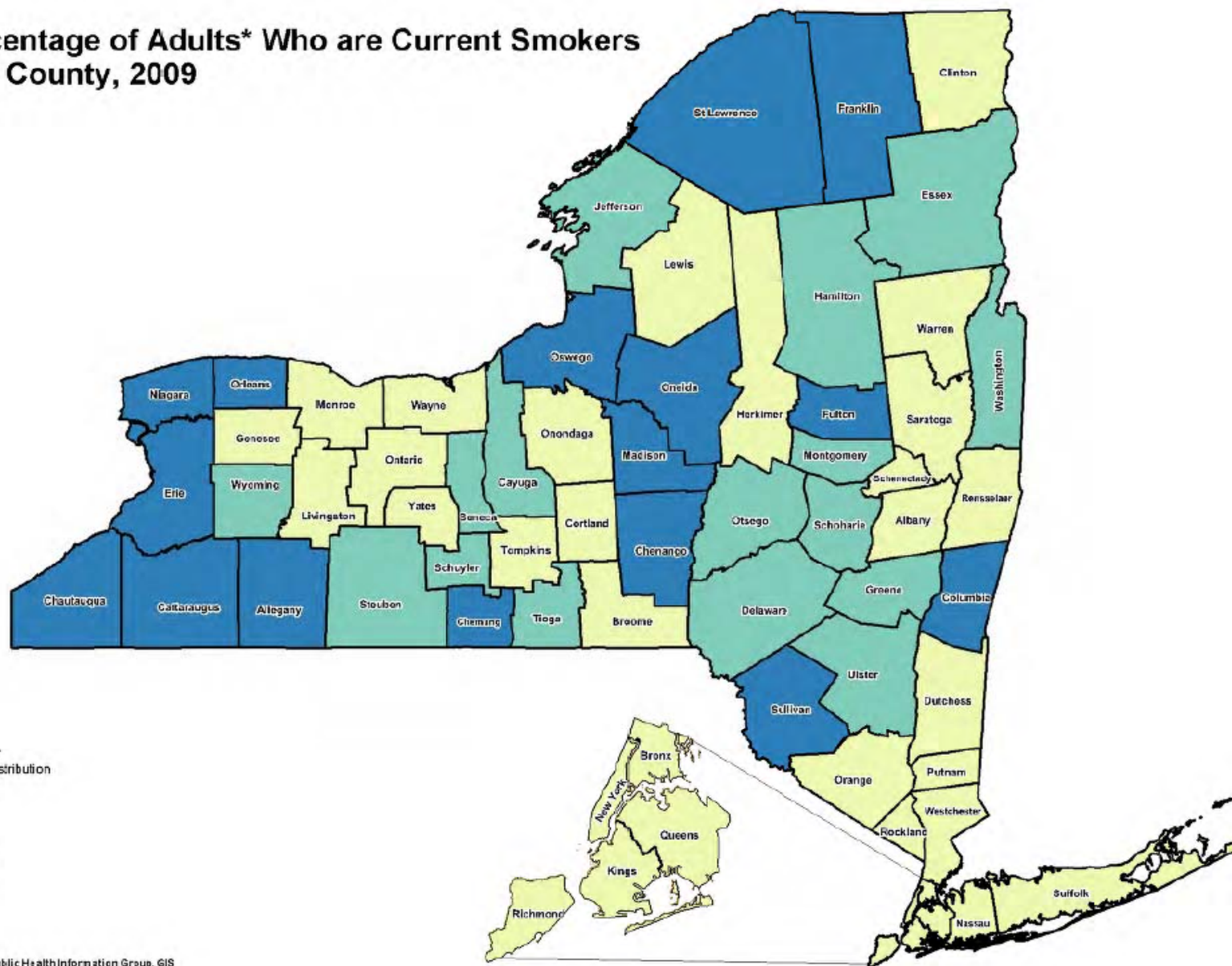


Source: BRFSS

TOBACCO USE

Age-Adjusted Percentage of Adults* Who are Current Smokers

New York State by County, 2009

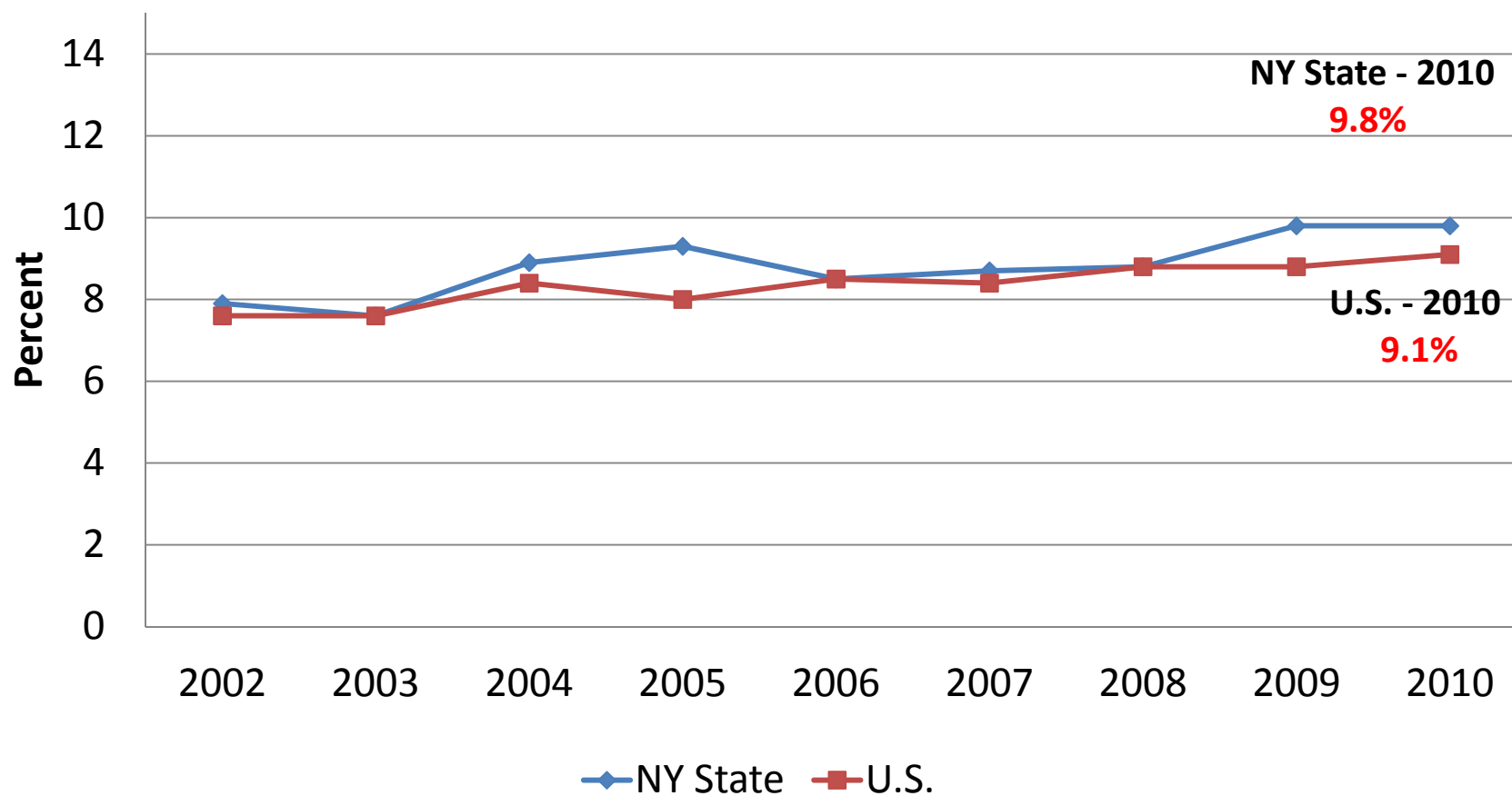


*Adults 18 Years of Age and Older
 Counties Are Shaded Based on Quartile Distribution

- 9.7-22.1 :Q1&Q2 (30)
- 22.1-24.4 :Q3 (16)
- 24.4+ :Q4 (16)

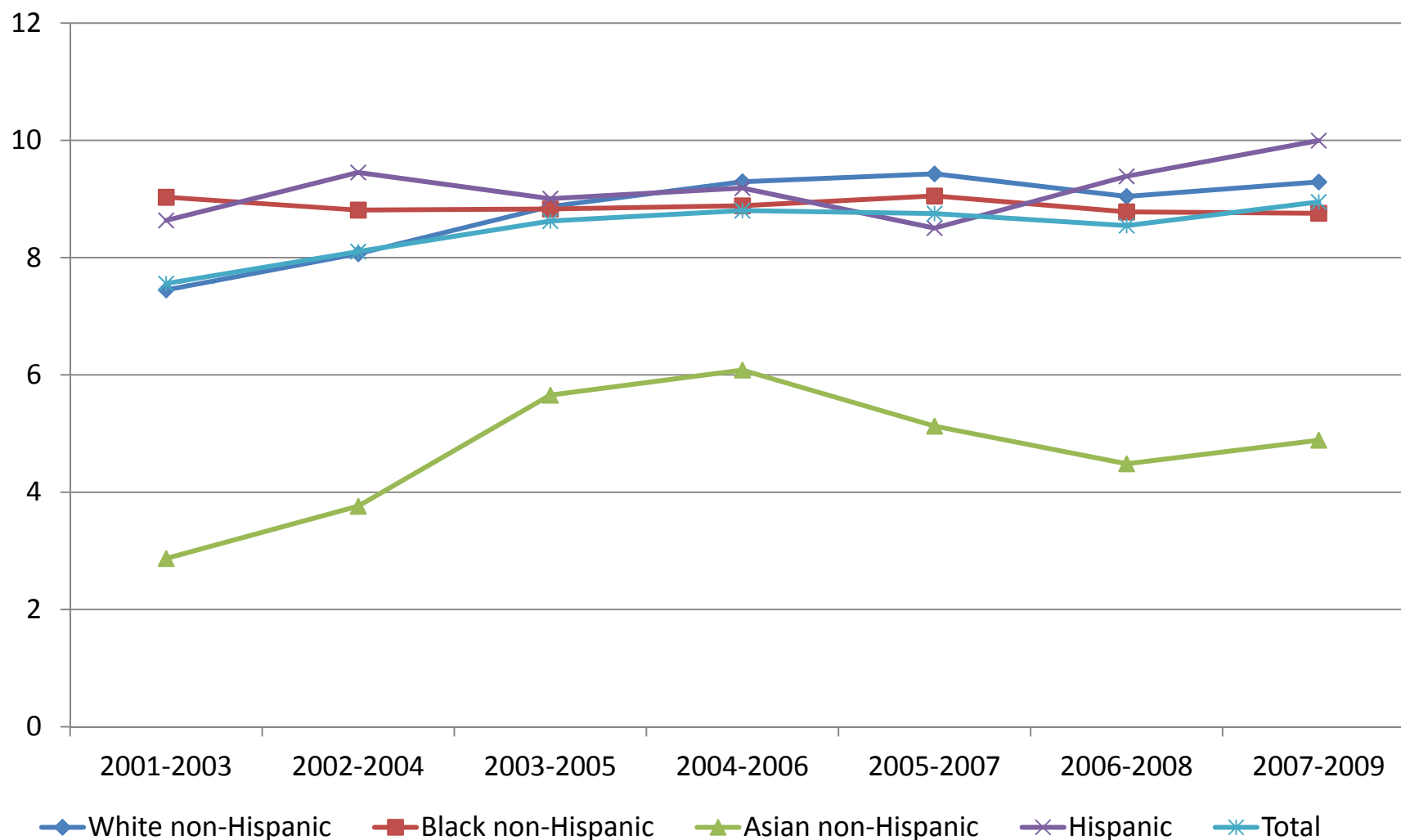
Source: NYSDOH Expanded BRFSS
 Produced by The Office of Public Health Practice, Public Health Information Group, GIS
 Questions Contact: PH-IG-INFO@health.state.ny.us

Prevalence of Current Asthma Among Adults New York State and U.S., 2002-2010

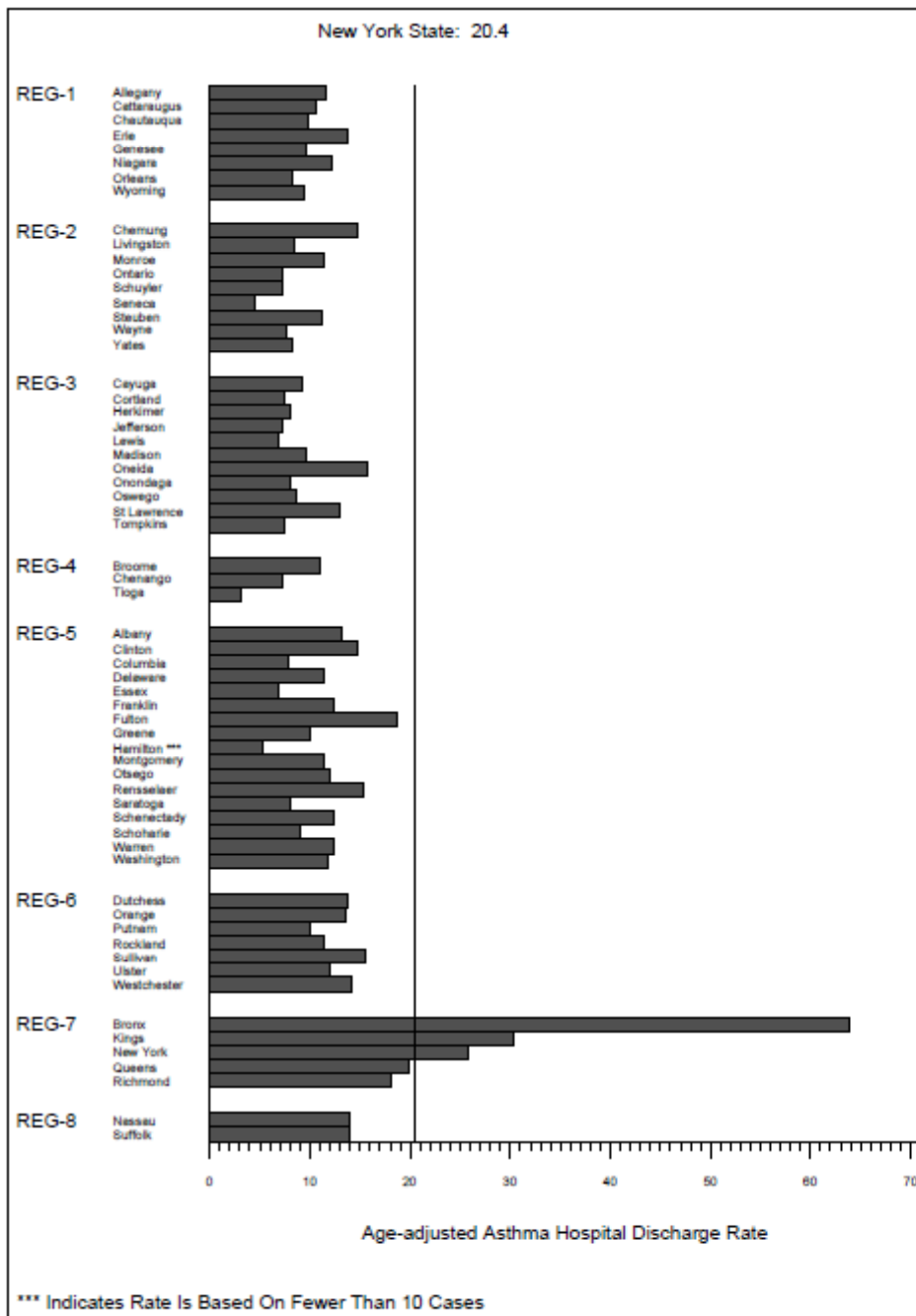


Source: CDC, Behavioral Risk Factor Surveillance System

Age-Adjusted Percentage of Adults 18 years and Older Diagnosed with Current Asthma by Race/Ethnicity, New York State, 2001-2009

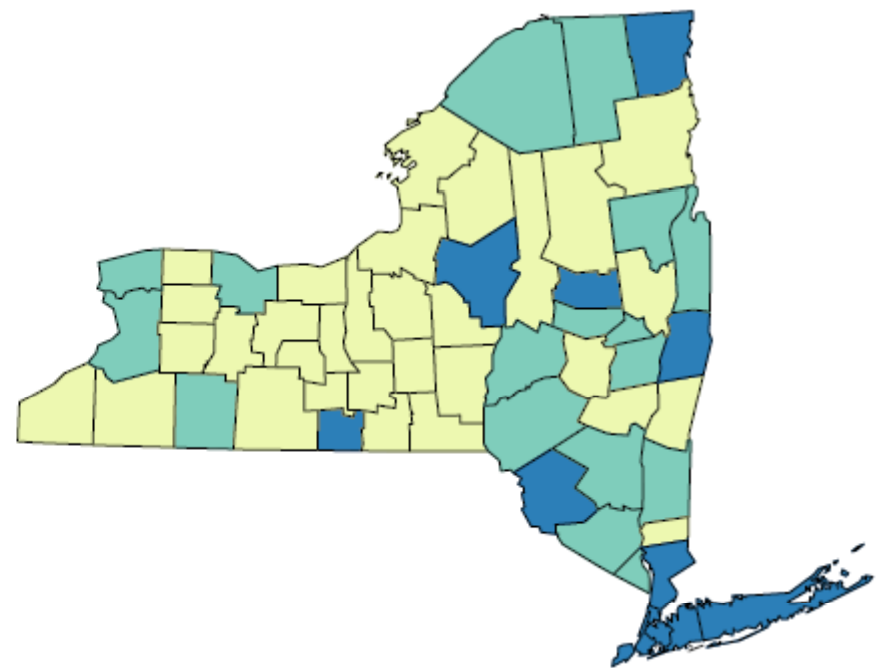


Age-adjusted to the 2000 U.S. Population
Source: BRFSS

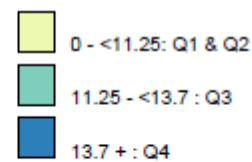


Asthma Hospital Discharges

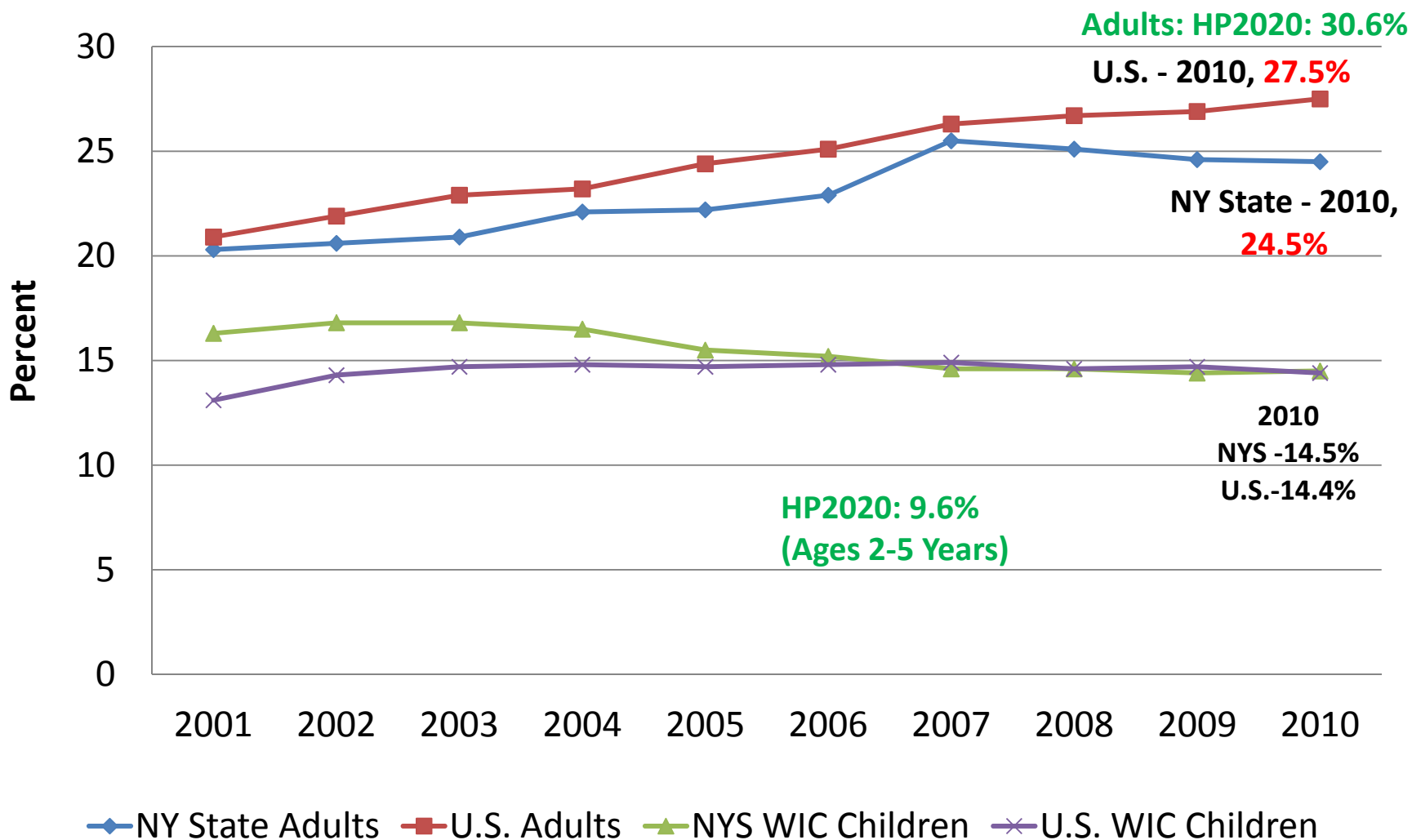
Age Adjusted Hospital Discharge Rate per 10,000 Population, Total 2007-2009 (Adjusted To 2000 United States Population)



Age Adjusted Hospital Discharge Rate
Counties Are Shaded Based On Quartile Distribution

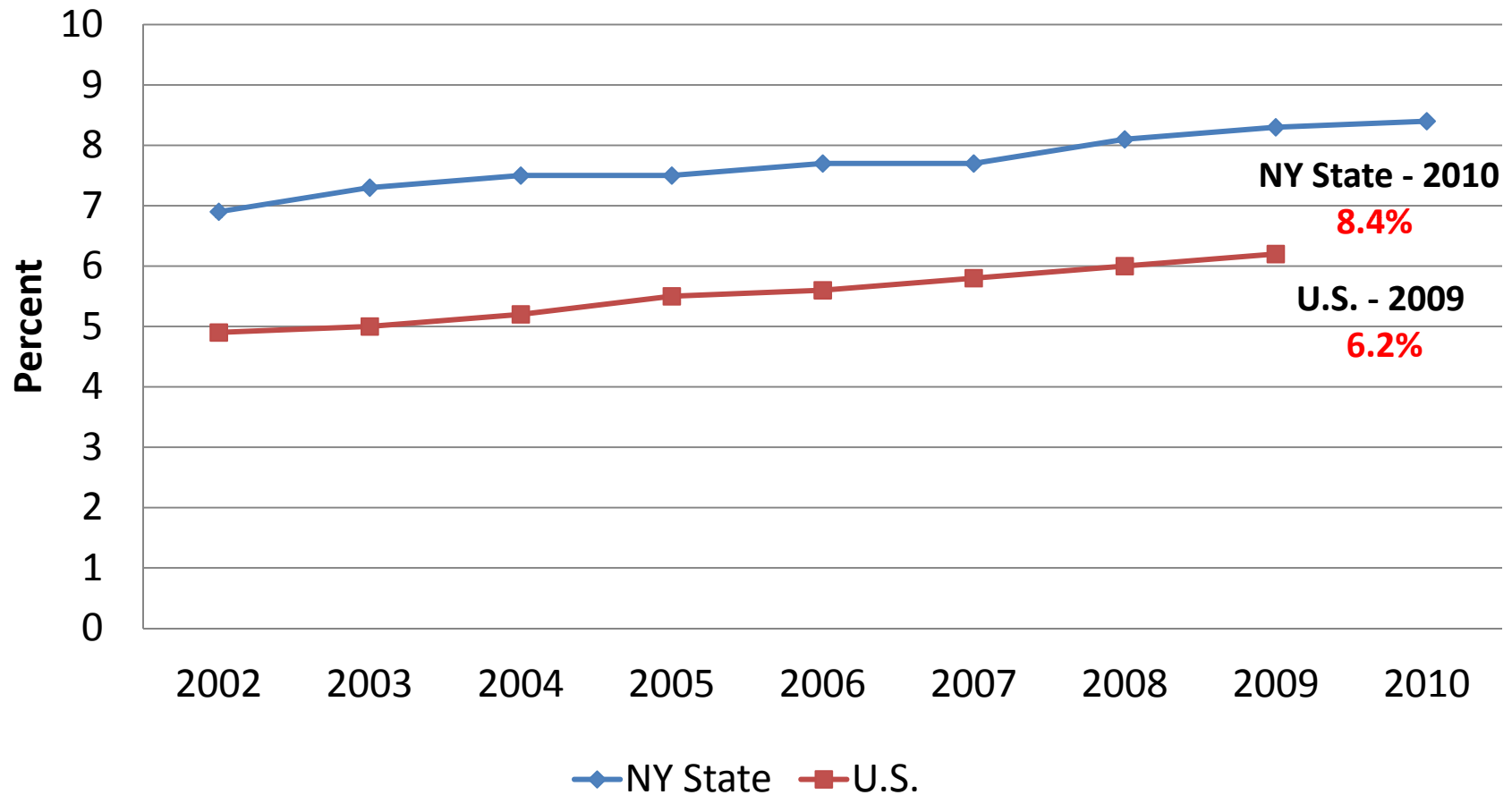


Prevalence of Obesity among Children and Adults, New York State and U.S., 2001-2010



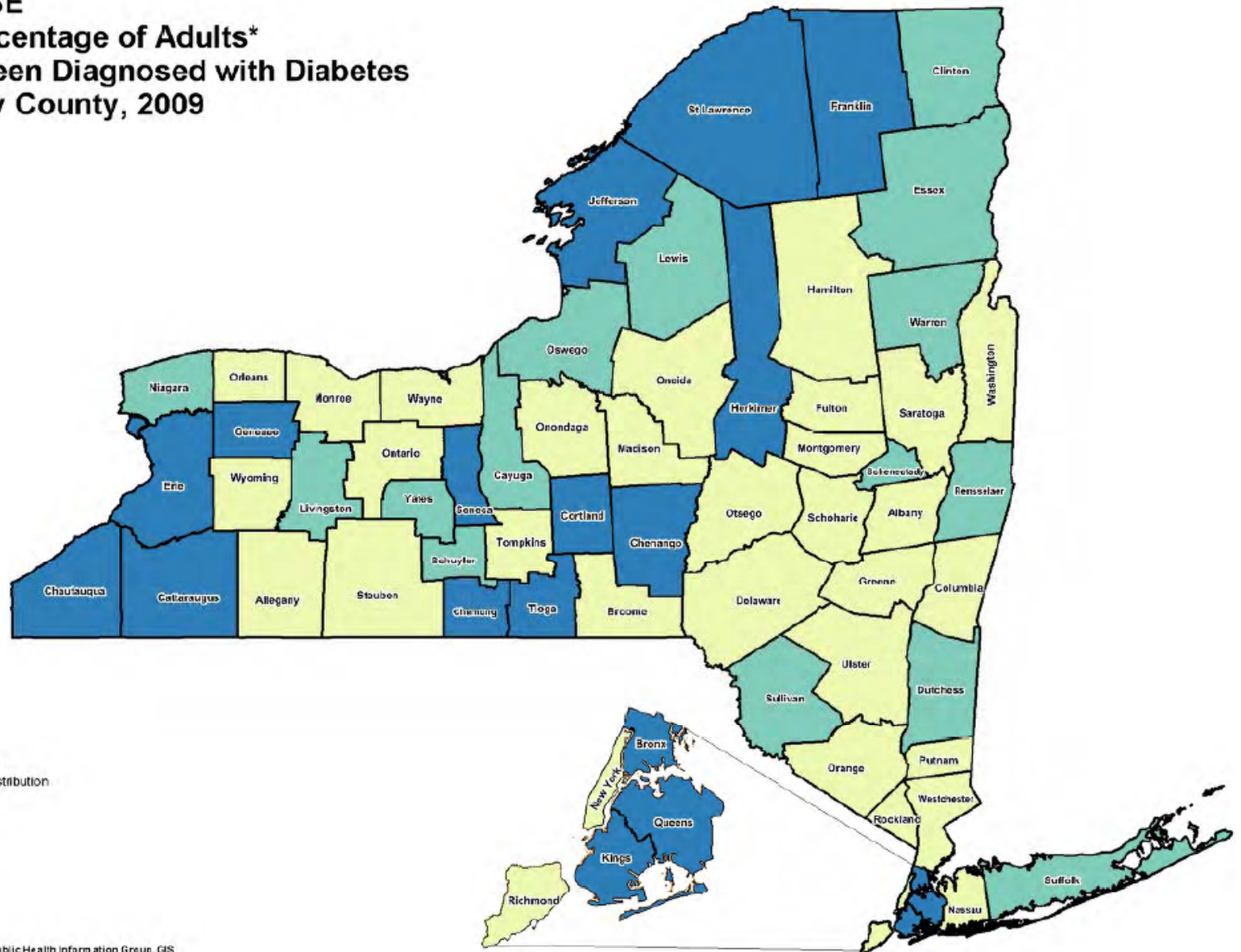
Source: Behavioral Risk Factor Surveillance System, Adults ages 18+
 Pediatric Nutrition Surveillance System, Children ages 2-4 years

Age-Adjusted Percentage of Adult Diabetes Prevalence New York State and U.S., 2002-2010



NY State Source: CDC, Behavioral Risk Factor Surveillance System; National Source: CDC, National Health Interview Survey
Note: NY State and U.S. rates computed by CDC's Division of Diabetes Translation, National Center for Chronic Disease
Prevention and Health Promotion

CHRONIC DISEASE
Age-Adjusted Percentage of Adults*
Who Have Ever Been Diagnosed with Diabetes
New York State by County, 2009

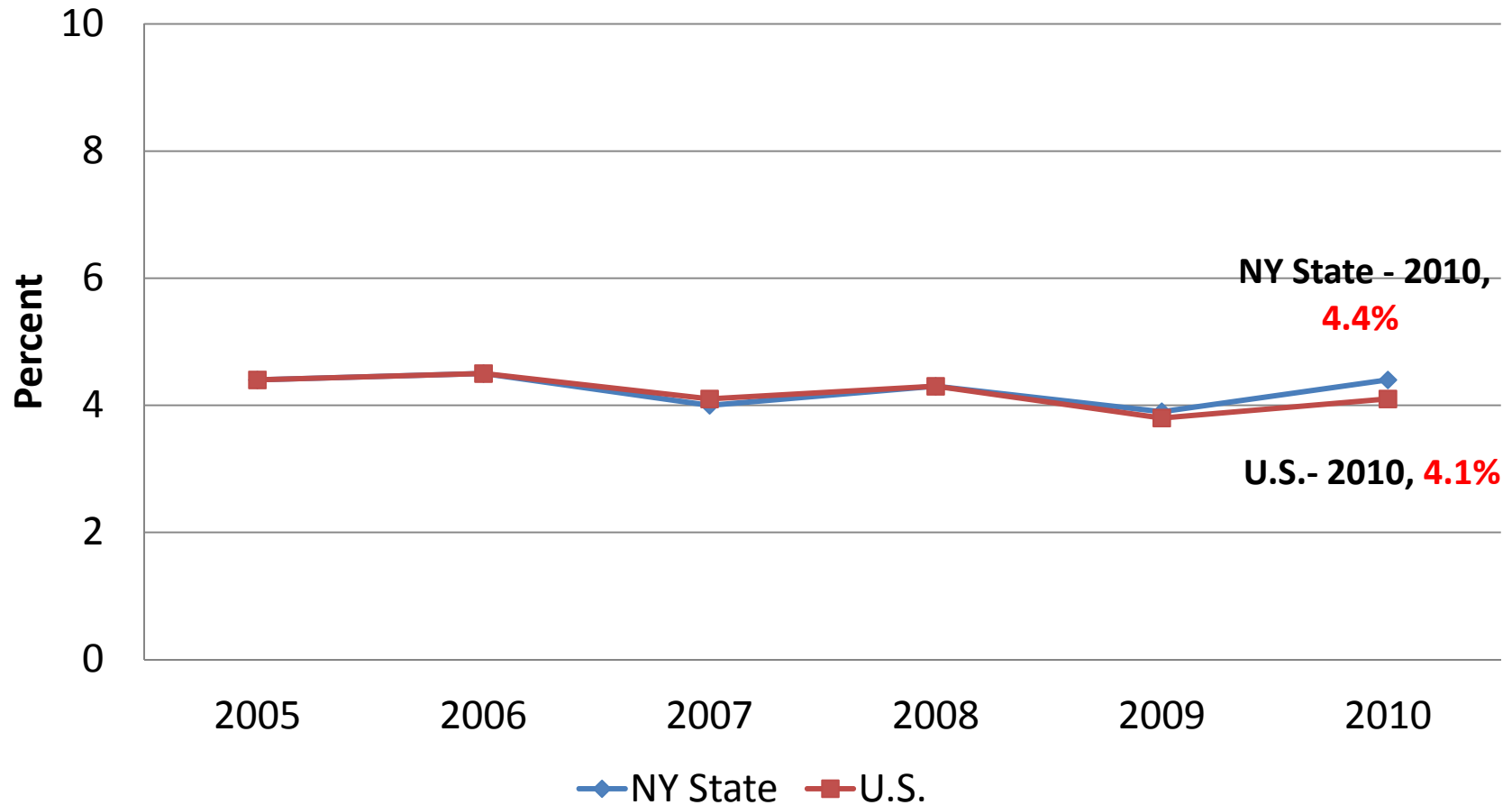


*Adults 18 Years of Age and Older
 Counties Are Shaded Based on Quartile Distribution

Light Yellow	5.90-9.0	:Q1&Q2	(31)
Light Green	9.0-10.5	:Q3	(15)
Dark Blue	10.5+	:Q4	(16)

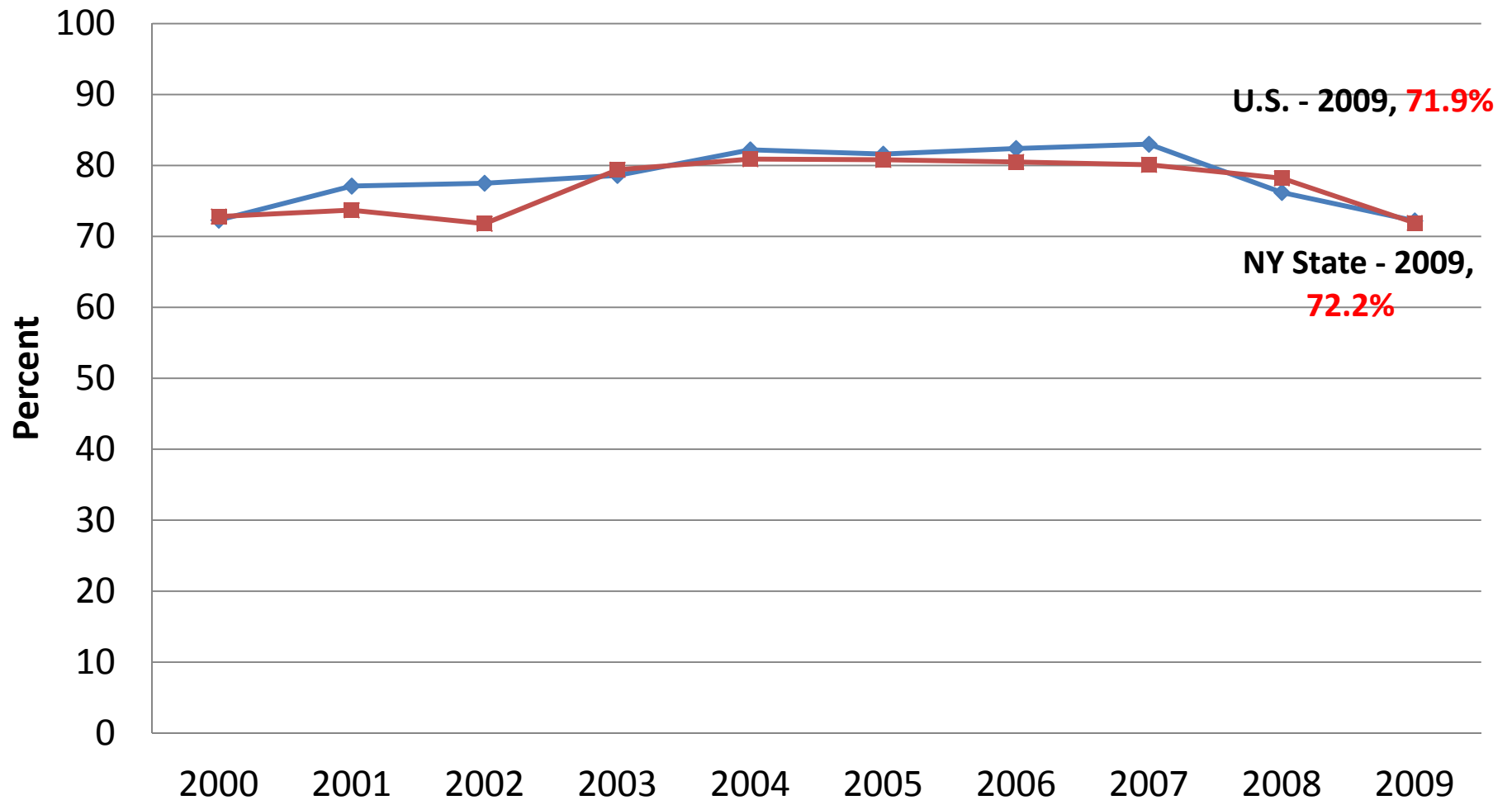
Source: NY SDOH expanded BRFSS
 Produced by The Office of Public Health Practice, Public Health Information Group, GIS
 Questions Contact: PHGINFO@health.state.ny.us

Percentage of Adult Cardiovascular Disease* Prevalence New York State and U.S., 2005-2010



*Cardiovascular disease includes persons who were ever told they had angina or coronary heart disease
Source: CDC, Behavioral Risk Factor Surveillance System

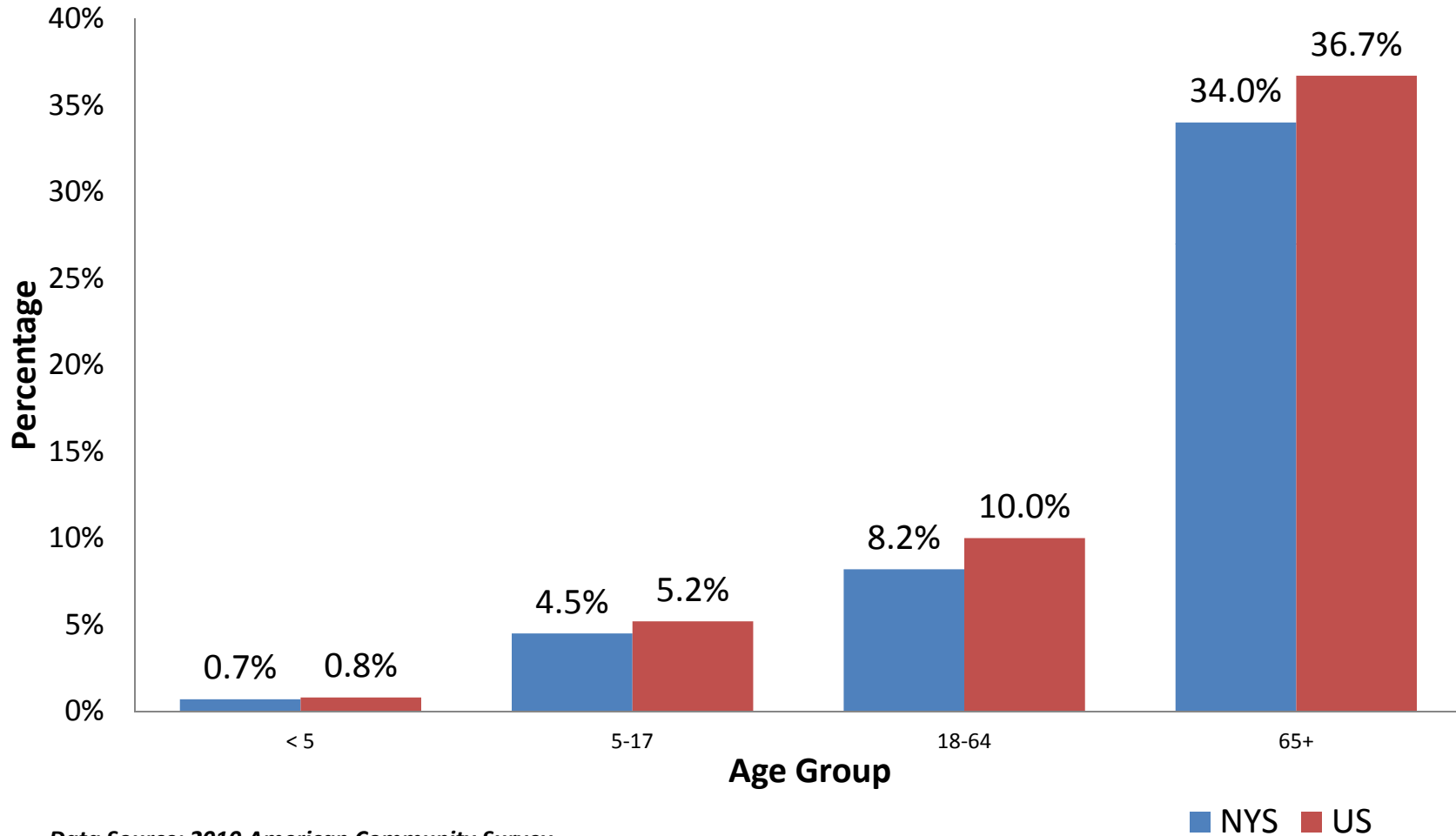
Children Age 19-35 Months That Are Fully Immunized NY State and U.S, 2000 - 2009



Fully Immunized 4DTaP, 3 Polio, 1 MMR, 3Hib and 3HepB (4:3:1:3:3)
Source: National Immunization Survey

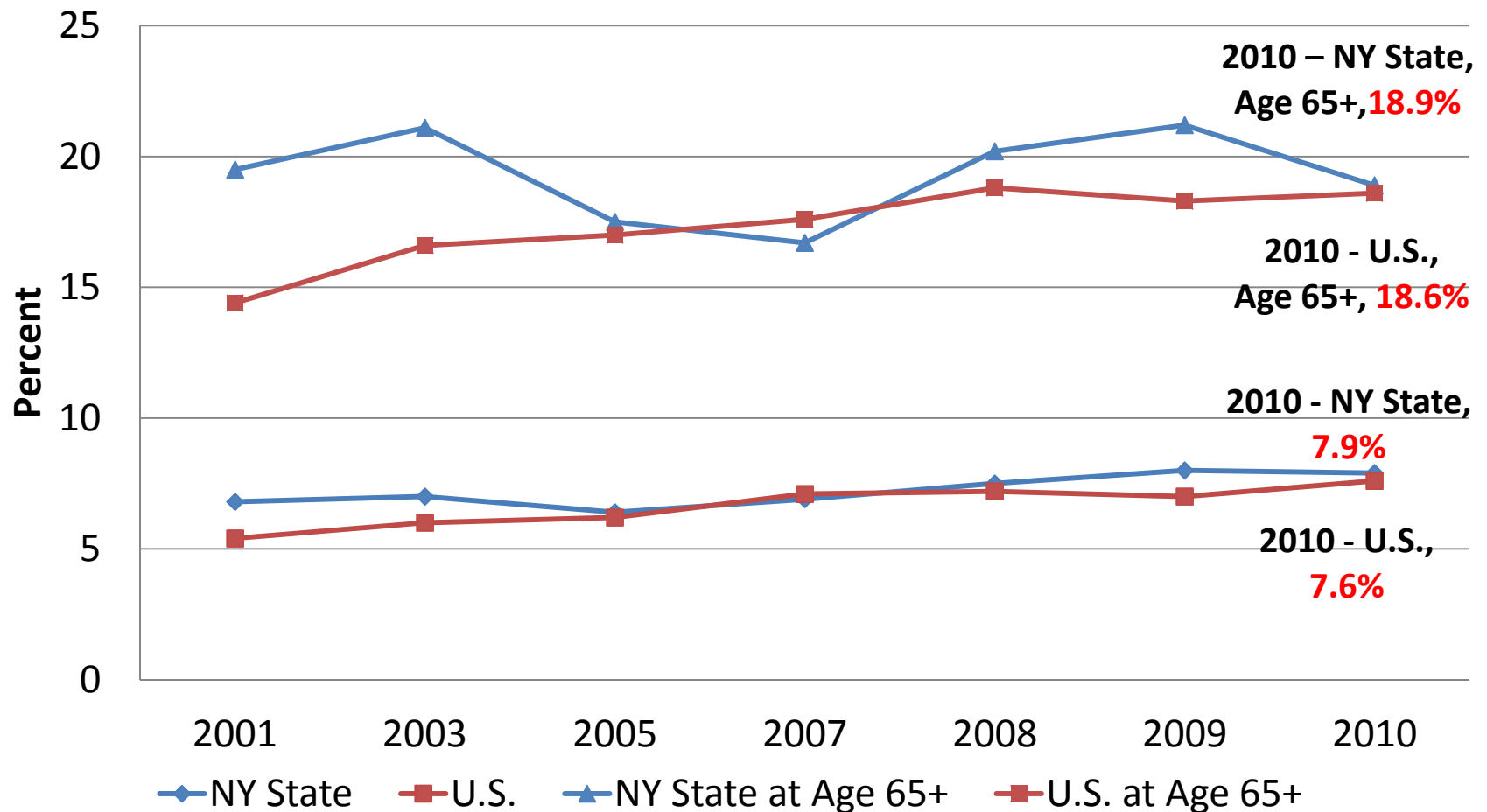
—◆— NY State —■— U.S.

Percentage of Population with Disability by Age, New York State, 2010



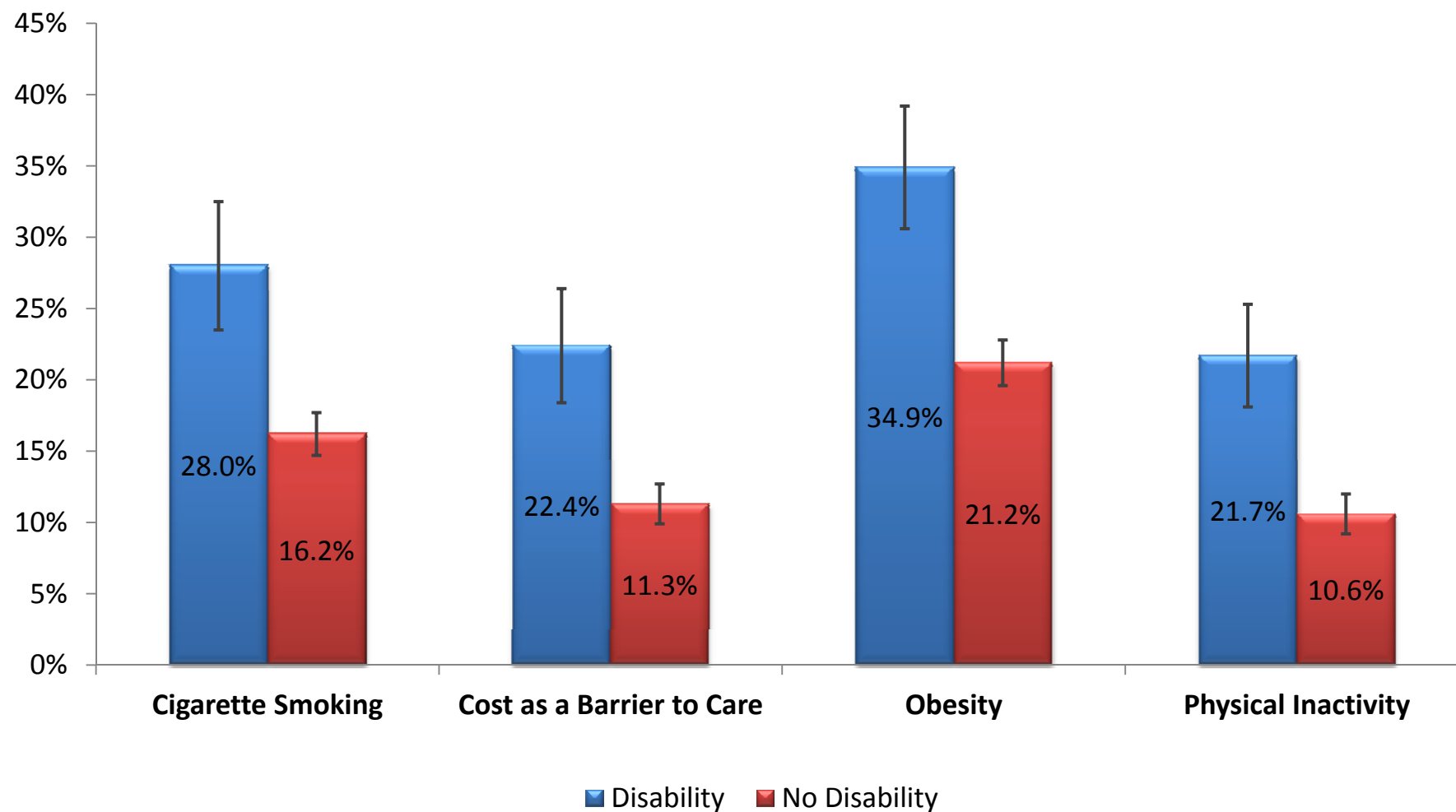
Data Source: 2010 American Community Survey

Percentage of Adults With Health Problems That Require the Use of Special Equipment, New York State and U.S., 2001-2010



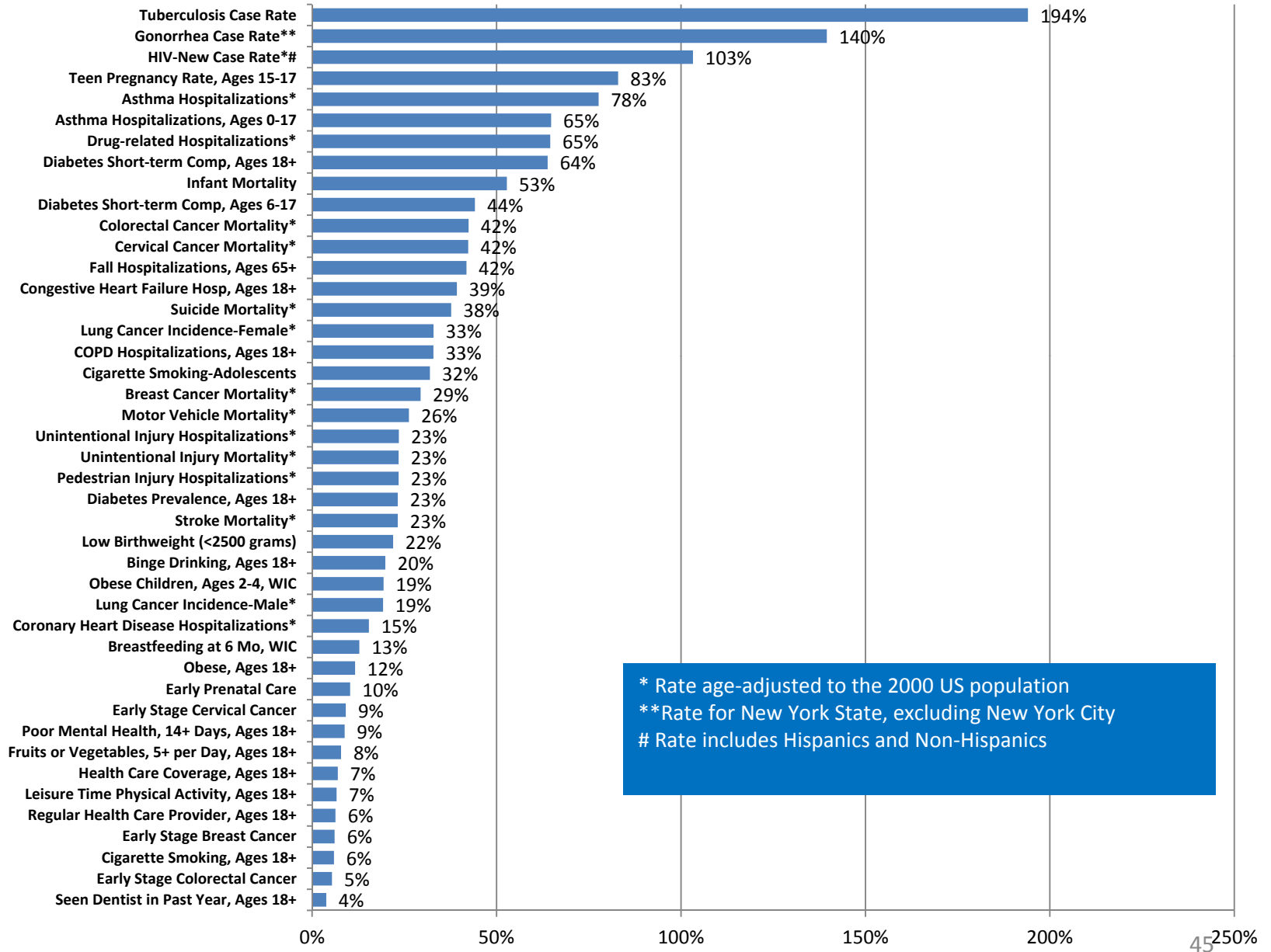
Source: Behavioral Risk Factor Surveillance System

Selected Health Indicators among Disability and No Disability Population, New York State, 2009



Data Source: Behavioral Risk Factor Surveillance System

Index of Disparity for Public Health Priority Areas, New York State, 2007 - 2009



* Rate age-adjusted to the 2000 US population
 **Rate for New York State, excluding New York City
 # Rate includes Hispanics and Non-Hispanics

Indicators are based on the most current data available and range between the years 2007 and 2009.

Selected Indicators with Large Racial/Ethnic Disparities

Indicators	NYS	White NH	Black NH	Asian NH	Hispanic	Index of Disparity
Newly diagnosed HIV case rate (per 100,000)**#	23.2	7.6	71.8	7.1	38.7	103%
Gonorrhea case rate (per 100,000)***	99.1	11.8	436.7	8.1	61.9	140%
Tuberculosis case rate (per 100,000)	6.3	1.2	9.8	39.1	13.8	194%
Pregnancy rate among females aged 15-17 years (per 1,000)	33.3	11.4	67.3	9.7	64.3	83%
Infant mortality (per 1,000 live births)	5.4	4.2	11.8	2.5	4.5	53%

* Prevention Agenda:

www.health.state.ny.us/prevention/prevention_agenda/

* Rate age-adjusted to the 2000 US population

*** Rate for New York State, excluding New York City

Rate includes Hispanics and Non-Hispanics

 Best group

 Worst group

Medicaid Redesign Team: Health Disparities Work Group

- Main page:

http://www.health.ny.gov/health_care/medicaid/redesign/health_disparities_workgroup.htm

- Medicaid Redesign Team Health Disparities
Work Group Data and Information

http://www.health.ny.gov/statistics/community/minority/medicaid_redesign_team.htm

America's Health Rankings 2011: New York State Rankings: Overall- 18; Health Determinants: 21

Americas Health Rankings Core Indicators	Value AHR	Rank 2011
DETERMINANTS		21
BEHAVIORS		
Smoking Prevalence	15.5	14
Binge Drinking	15.9	30
Obesity	24.5	9
High School Grad****	70.9	40
COMMUNITY & ENVIRONMENT		
Violent Crime Offenses <i>(per 100,000)</i>	392	31
Occupational Fatalities <i>(per 100,000 workers)</i>	2.9	5
Infectious Disease cases <i>(per 100,000)</i> ^a	9.5	32
Children in Poverty ****	24.1	38
Air Pollution	9.7	24
PUBLIC & HEALTH POLICIES		
Lack of Health Insurance	14.5	27
Public Health Funding	\$123	8
Immunization coverage	87.8	41
CLINICAL CARE		
Early Prenatal Care	72.4	21
Primary Care Physicians++++	167	5
Preventable Hospitalizations <i>(Per 1,000 Medicare enrollees)</i>	69	31

++++ Strengths for NYS identified by AHR 2011 report

**** Challenges for NYS identified by AHR 2011 Report

America's Health Rankings 2011: New York State Rankings: Overall- 18; Health Outcomes -9

Americas Health Rankings Core Indicators	Value AHR	Rank 2011
OUTCOMES		9
Diabetes ^b	8.9	29
Poor Mental Health Days	3.6	30
Poor Physical Health Days	3.5	22
Geographic Disparity	8.7	10
Infant Mortality++++ <i>(per 1,000 births)</i>	5.5	8
Cardiovascular mortality**** <i>(Age and race adjusted, per 100,000)</i>	289.6	37
Cancer Mortality++++ <i>(Age-adjusted Per 100,000)</i>	177.6	8
Premature Deaths <i>(YPLL due to deaths before age 75 per 100,000)</i>	5,934	6

++++ Strengths for NYS identified by AHR 2011 report

**** Challenges for NYS identified by AHR 2011 Report