



**Department  
of Health**

# **Small Area Data for Uncovering Hidden Health Disparities**

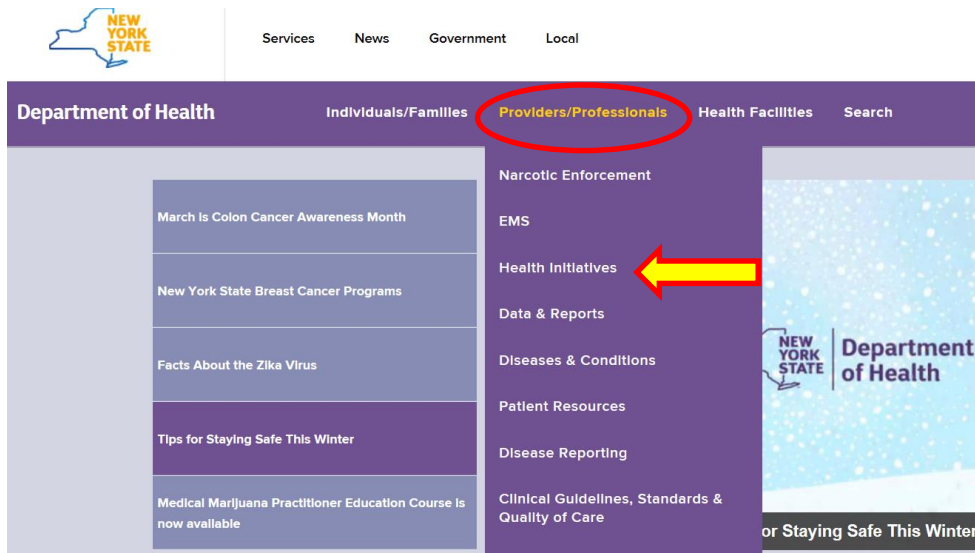
March 24, 2016

# Prevention Agenda Tracking Dashboard

- Data available on tracking indicators at:
  - State,
  - Regional,
  - County, and
  - **Sub-county levels**that can be used for Community Health Assessment and Planning

# How to Access the Dashboard

- Direct link: <https://health.ny.gov/preventionagendadashboard>
- From the DOH website: <http://www.health.ny.gov/http://www.health.ny.gov>



- Click on “Providers/Professionals” tab
- Click on “Health Initiatives” to access the Prevention Agenda homepage

# Access the Prevention Agenda Homepage



Services

News

Govern

Department of Health

Individuals/Families

You are Here: [Home Page](#) > [Health Care Professionals and Patient Safety](#) > NYS Health Initiatives

## NYS Health Initiatives

- [Prevention Agenda 2013-2018: New York State's Health Improvement Plan](#)
- [Redesigning New York's Medicaid Program](#)
- [Delivery System Reform Incentive Payment \(DSRIP\) Program](#)
- [The New York State Health Innovation Plan](#)
- Population Health Improvement Program



- From the **NYS Health Initiatives**, click on “[Prevention Agenda 2013-2018: New York State's Health Improvement Plan](#)” link

# Access the Dashboard

- From the Prevention Agenda Homepage, the Dashboard can be accessed from the two places as below:

The screenshot shows the Department of Health website interface. At the top, there is a purple navigation bar with the text "Department of Health" and four menu items: "Individuals/Families", "Providers/Professionals", "Health Facilities", and "Search". Below this is a dark blue "Overview" sidebar with a list of links. The link "Prevention Agenda Dashboard" is circled in red. The main content area features the heading "Prevention Agenda 2013-2018: New York State's Health Improvement Plan" and a paragraph of introductory text. Below the text are several links, with "Prevention Agenda Dashboard" also circled in red.

**Department of Health**

Individuals/Families   Providers/Professionals   Health Facilities   Search

You are Here: [Home Page](#) >

**Prevention Agenda 2013-2018: New York State's Health Improvement Plan**

The Prevention Agenda 2013-2018 <sup>8</sup> is the blueprint for state and local action to improve the health of New Yorkers in five priority areas and to reduce health disparities for racial, ethnic, disability, and low socioeconomic groups, as well as other populations who experience them.

[Prevention Agenda 2013-2018: Priorities, Focus Areas, Goals and Objectives](#) (table format)

[Make New York the Healthiest State Brochure](#) (PDF) [Order form](#) (PDF)

The [Prevention Agenda Dashboard](#) - Tracking the Prevention Agenda's Progress

[Local Health Departments and Hospitals](#) - Information about Prevention Agenda Local Health Improvement Plans and Contact Information

**NEW YORK**  
STATE OF OPPORTUNITY.

**Department of Health**

# Prevention Agenda Dashboard

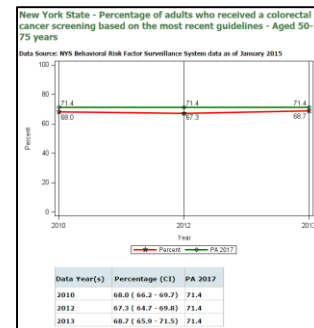
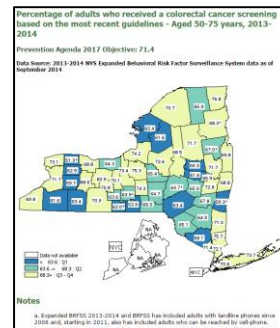
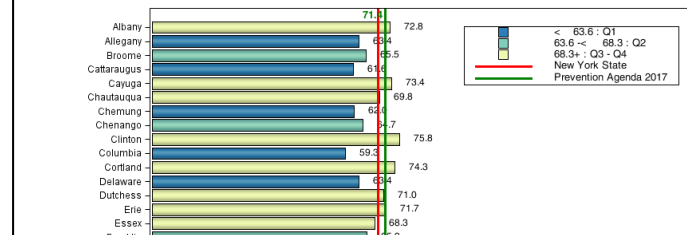


## Prevent Chronic Diseases

Albany County - Prevention Agenda (PA) Indicators	Data Views	Dial <i>i</i>	PA 2017 Objective and Most Recent Data <i>i</i>	Indicator Performance <i>i</i>
14 - Percentage of adults who are obese			Albany: 25.7 NYS: 24.9 PA 2017: 23.2	NO SIGNIFICANT CHANGE
15 - Percentage of children and adolescents who are obese			Albany: 17.0 NYS excl NYC: 17.3 PA 2017: 16.7	IMPROVED#
16 - Percentage of cigarette smoking among adults			Albany: 16.3 NYS: 15.6 PA 2017: 15.0	NO SIGNIFICANT CHANGE
17 - Percentage of adults who received a colorectal cancer screening based on the most recent guidelines - Aged 50-75 years			Albany: 72.8 NYS: 69.3 PA 2017: 71.4	NO SIGNIFICANT CHANGE
18 - Asthma emergency department visit rate per 10,000 population			Albany: 64.1 NYS: 85.7 PA 2017: 75.1	SIGNIFICANTLY WORSEMED
19 - Asthma emergency department visit rate per 10,000 - Aged 0-4 years			Albany: 184.3 NYS: 221.3 PA 2017: 196.5	NO SIGNIFICANT CHANGE

### Percentage of adults who received a colorectal cancer screening based on the most recent guidelines - Aged 50-75 years, 2013-2014

Data Source: 2013-2014 NYS Expanded Behavioral Risk Factor Surveillance System data as of September 2014



# Sub-County Data under County Dashboard

## New York State Prevention Agenda Dashboard - County Level: Orange County

[State Dashboard](#)

**[County Dashboard](#)**

[About This Site](#)

[Prevention Agenda 2013-2018](#) <sup>a</sup>

[County Dashboard Home](#)

[Data Table](#)

[County Comparison](#)

[Health Data NY](#)

Select County

**Filter by County Status on:** *i*

PA 2018 Objective:  Met   Not Met  *i*

Indicator Performance:  Improved   No Change   Worsened  *i*

County's Position:  Lower Risk   Middle Risk   Higher Risk  *i*

# Look For and Click on

Sub-County  
Data

## Improve Health Status and Reduce Health Disparities

### Orange County - Prevention Agenda (PA) Indicators

Data Views

Dial *i*

PA 2018 Objective and Most

Recent Data *i*

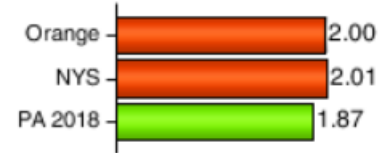
Indicator Performance *i*

1 - Percentage of premature deaths (before age 65 years)



**NO SIGNIFICANT CHANGE**

1.1 - Premature deaths: Ratio of Black non-Hispanics to White non-Hispanics



**WORSENE#**



Department of Health



## Percentage of premature deaths (before age 65 years), three year average, 2011-2013

Orange County Minor Civil Division Map

### Deaths (before age 65 years)

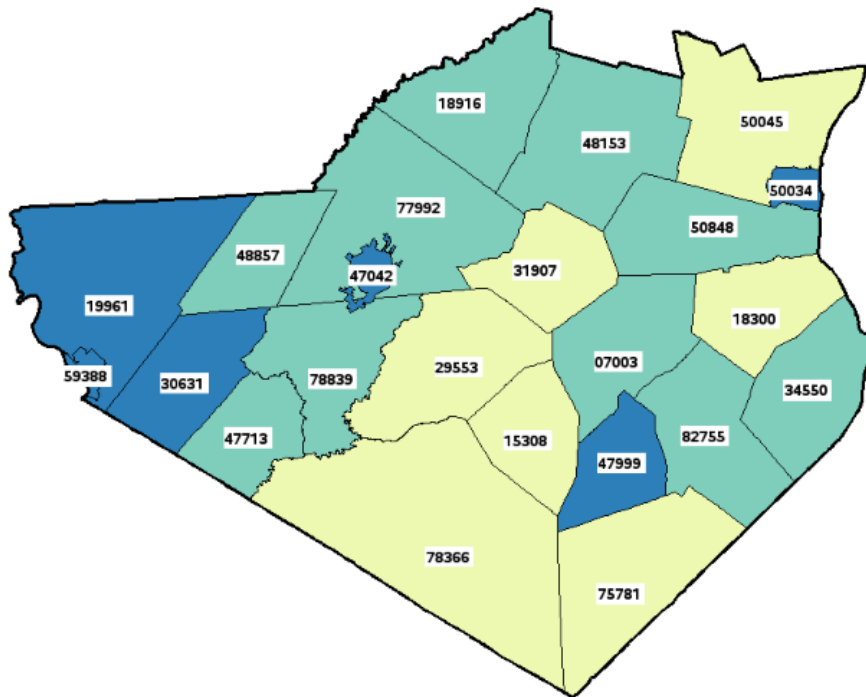
Orange County - 26.2

New York State - 23.8

New York State (Excl NYC) - 21.0

### Quartile (Q) Distribution (Excl NYC)

- < 23.8 : Q1 - Q2
- 23.8 -< 29.6 : Q3
- 29.6+ : Q4



For further information on how to navigate and use different functionalities of the dashboard, access the How-to-Guide document

[https://apps.health.ny.gov/doh2/applinks/ebi/SASStoredProcess/dohPublic/pix/how\\_to\\_guide.pdf](https://apps.health.ny.gov/doh2/applinks/ebi/SASStoredProcess/dohPublic/pix/how_to_guide.pdf) )

**Contact information:**

Trang Nguyen, MD, DrPH  
Deputy Director, Office of Public Health Practice  
New York State Department of Health

Email: [trang.nguyen@health.ny.gov](mailto:trang.nguyen@health.ny.gov)

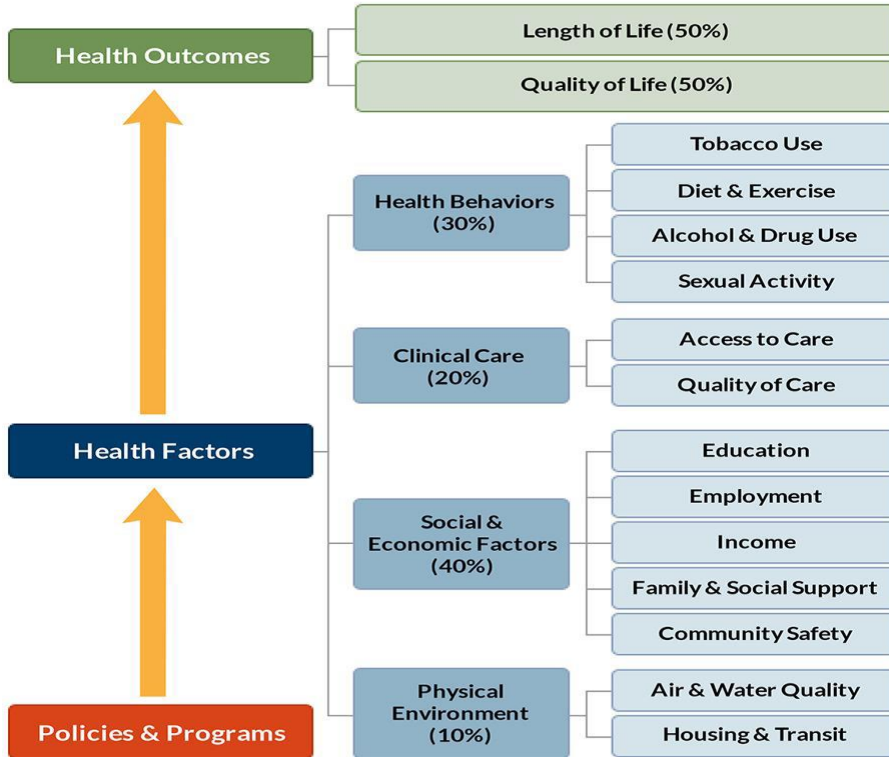


**Department  
of Health**

**County Health Rankings  
Small Area Data Reports - Pilot Project  
New York State Department of Health**

March 24, 2016

# County Health Rankings



County Health Rankings model © 2014 UWPHI

## County Health Rankings & Roadmaps

Building a Culture of Health, County by County

A Robert Wood Johnson Foundation program

Health Outcomes

Today's Health

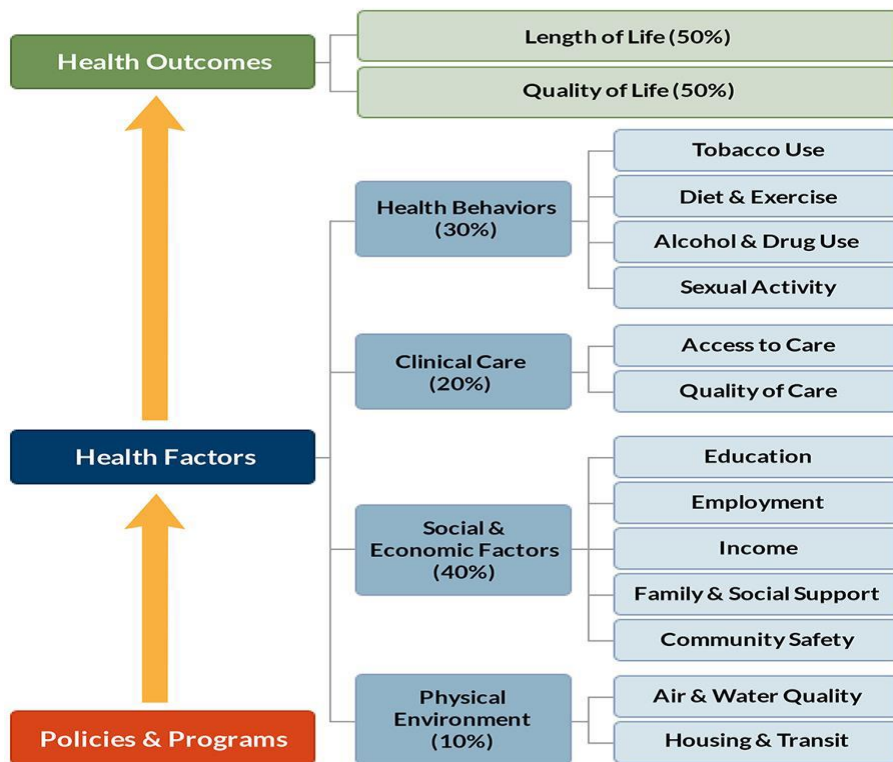
Health Factors

Tomorrow's Health



Department of Health

# County Health Rankings – Sub County Data Pilot



County Health Rankings model © 2014 UWPHI

**Goal:** Explore ways to enhance local data availability in order to aid communities in identifying and prioritizing opportunities and targeting resources for health improvement, within and across counties.

# Background for New York Project

**Goal:** Develop and evaluate sub-county reports (62) for NYS that include data below county level for selected County Health Rankings measures (where data are available)

**Rationale:** Public health action is local; county level estimates of key indicators may not reflect needs of priority sub-populations or communities

**Principal Investigator:** Trang Nguyen, MD, Dr.PH

**Co-Investigators:** Ian Brissette, PhD; Sylvia Pirani, MPH, MS

**Team:** Isaac Michaels, MPH; Mycroft Sowizral, PhD; Yunshu Li, MS; Anne McCarthy, MPH



# Measures

## Vital Statistics and SPARCS data:

- Premature death
- Low birthweight
- Teen pregnancies
- Preventable hospital stays
- Injury deaths

## Expanded BRFSS 2013-2014 data

- Poor mental health
- Adult smoking
- Adult obesity
- Excessive drinking
- Food insecurity
- Housing insecurity

# Sub-county levels

## Vital Statistics and SPARCS data:

- **Sub-county populations:** by race/ethnicity, age group, Medicaid status, education (where data available)
- **Sub-county geography:** ZIP code

## Expanded BRFSS 2013-2014 data

- **Sub-county geography:** Minor civil division (where data available)

# Approach

Project Phase	Focus
Analysis Phase	Developing methods & standards to calculate sub-county estimates & document stability of health indicator estimates
Design Phase	Establish consistent format for sharing data on health indicators by county, graphics and tabular information
Evaluation Phase	Solicit feedback from end users on reports to inform improvements & track use of reports

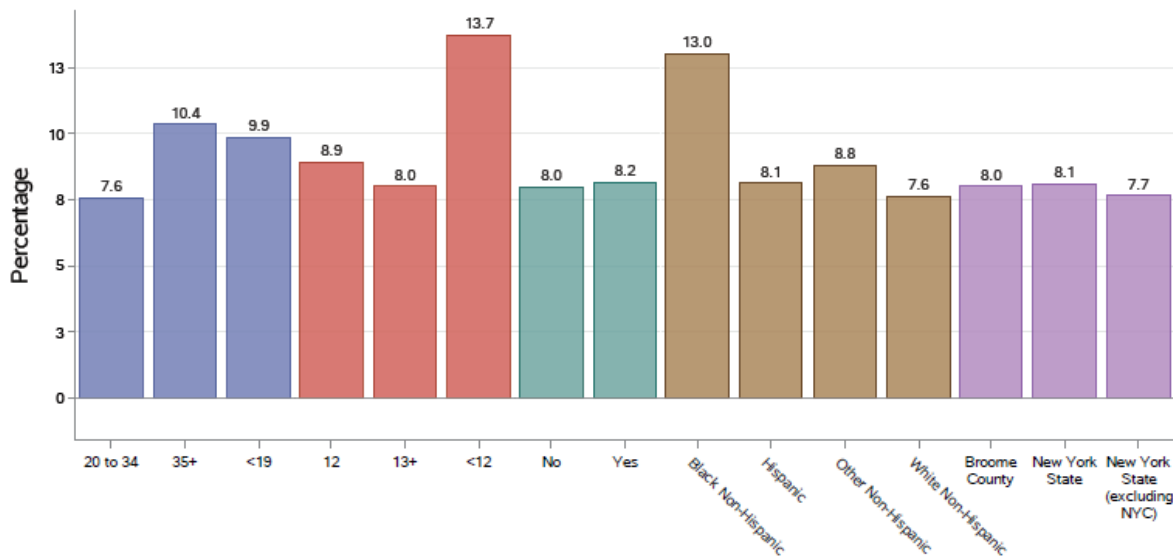


# Sample Report Format: Count Data

Percentage of live births with low birthweight (<2,500 grams) by maternal characteristics  
2007-2013  
County: Broome



Indicator, years,  
county



Bar graphs covering  
race/ethnicity sub-  
groups; county, NYS,  
NYS (exl. NYC)

Age Group	Education	Medicaid	Race/Ethnicity	Total
-----------	-----------	----------	----------------	-------



# Sample Report Format: Count Data

County Sub-population	Low birthweight births	Live births	Percentage
<b>Age Group</b>			
<19	63	639	9.9
20 to 34	911	12,038	7.6
35+	187	1,802	10.4
<b>Education</b>			
12	52	583	8.9
13+	97	1,211	8.0
<12	43	313	13.7
<b>Medicaid Status</b>			
No	880	11,056	8.0
Yes	271	3,319	8.2
<b>Race/Ethnicity</b>			
Black Non-Hispanic	105	806	13.0
Hispanic	58	712	8.1
Other Non-Hispanic	86	979	8.8
White Non-Hispanic	912	11,983	7.6
<b>Total</b>			
Broome County	1,161	14,480	8.0
New York State (excluding NYC)	66,331	864,456	7.7
New York State	138,178	1,704,380	8.1

← Data table corresponding with graph

# Sample Report Format: Count Data

Percentage of live births with low birthweight (<2,500 grams)  
2007-2013  
County: Broome

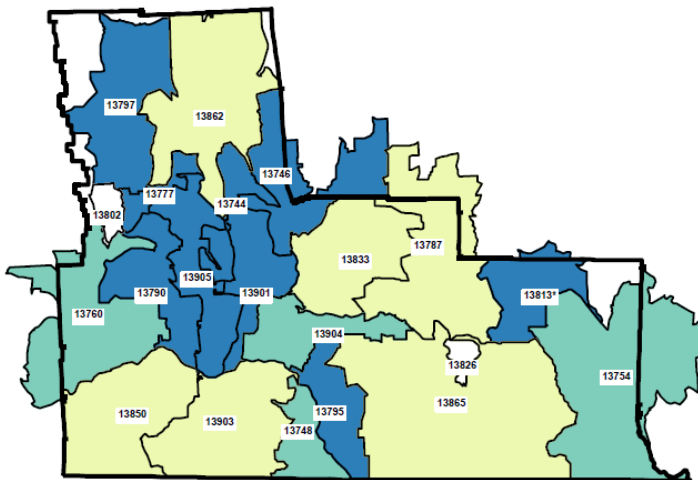
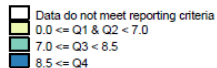
Percentage of live births with low birthweight (<2,500 grams)

Broome County : 8.0

New York State : 8.1

New York State excluding NYC : 7.7

Quartile Distribution: NYS excl. NYC



Map and corresponding data table for geographic sub-units (zip codes); shaded based on quartiles Q1-2; Q3; and Q4

\*: Less than 10 low birthweight births, therefore rate may not be stable (RSE > 30%)

s: Data do not meet reporting criteria

# Sub-county estimates 2013-14 NY e-BRFSS

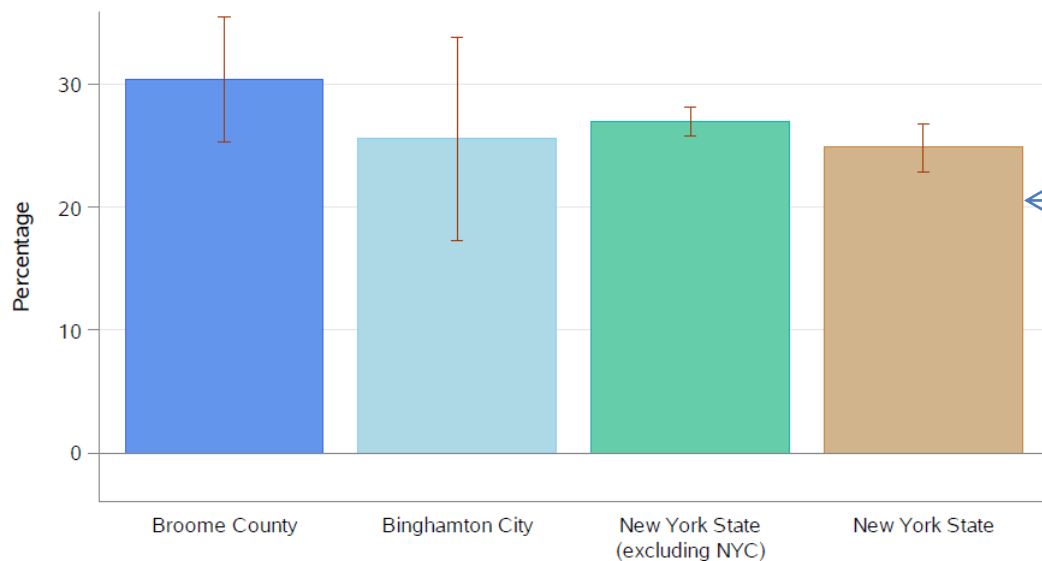


Pilot calculating key indicators for 18 cities and towns in 17 counties;

Towns and cities represented at least 30% of county population;

# Sample Report Format: Survey Data

Percentage of adults who are obese  
April 2013 - March 2014  
County: Broome



← Indicator, years, county

← Estimates of prevalence and 95% CIs for town/city, county, NYS, and NYS (excl. NYC)

# Sample Report Format: Count Data

County Sub-population	Percentage	95% Confidence Interval
<b>County Subdivision</b>		
Binghamton City	25.6	(17.3 - 33.9)
<b>Total</b>		
Broome County	30.4	(25.3 - 35.5)
New York State (excluding NYC)	27.0	(25.8 - 28.2)
New York State	24.9	(22.9 - 26.8)

Description: Percentage of adults who are obese (i.e., body mass index greater than or equal to 30.0) based on self reported weight and height.

Data Source: New York State 2013-2014 Expanded Behavioral Risk Factor Surveillance Survey (eBRFSS)

Data table with indicator definition and

notes/ information about stability of health indicator estimates

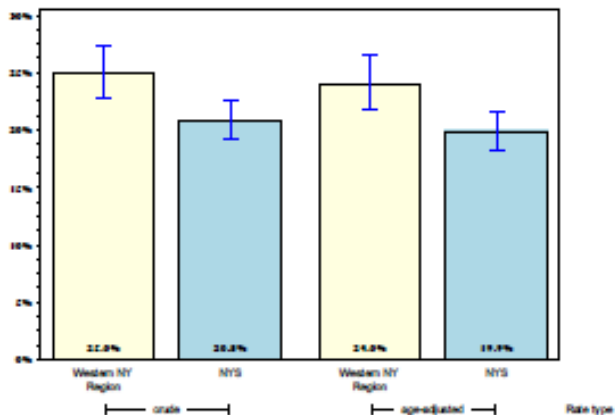
# 2013-14 eBRFSS Data by Demographic Subgroups for Counties and DSRIP Regions

<http://www.health.ny.gov/statistics/brfss/expanded/2013/county/>

## Western NY

Improve Health Status and Reduce Health Disparities

Percentage of adults living with a disability\*



Point and click map with pdf reports including figures and data tables for 50 separate health indicators measured through eBRFSS 2013-14

# Next Step – Focus Groups

Recruit 12 volunteers

6 representing local health departments,  
3 hospitals, and 3 PHIPs

Finalize Focus Group Script

Schedule & Implement Focus Group by Web-ex



# Questions?

# Thank You!

Ian Brissette

[ian.brissette@health.ny.gov](mailto:ian.brissette@health.ny.gov)

