

# Tuberculosis in NYC

2025

743

Number of TB cases confirmed

8.4

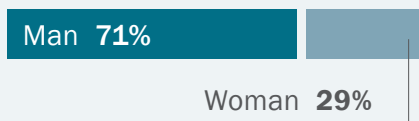
TB rate per 100,000 people



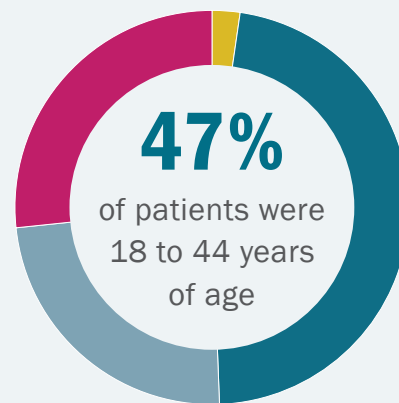
11%

Decrease from 2024 to 2025

TB cases by gender identity<sup>1</sup>:



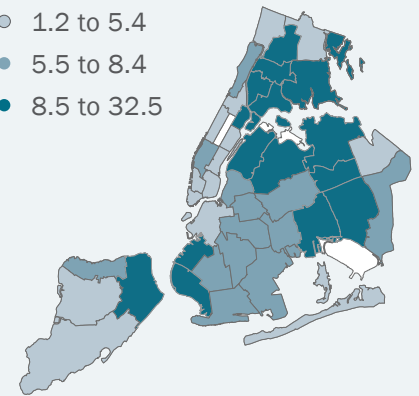
TB cases by age group:



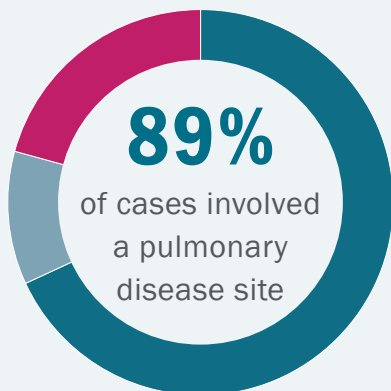
TB rates by neighborhood<sup>4</sup>:

Rate per 100,000

- 1.2 to 5.4
- 5.5 to 8.4
- 8.5 to 32.5

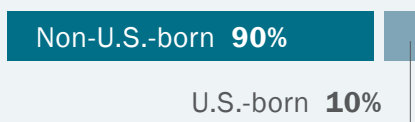


TB cases by disease site:



- Pulmonary disease only 68%
- Extrapulmonary disease only 11%
- Both pulmonary and extrapulmonary disease 21%

TB cases by birth in the U.S.<sup>3</sup>:



15

Number of NYC neighborhoods with a TB rate higher than the citywide rate

10

Number of people newly diagnosed with a multidrug-resistant TB<sup>2</sup> strain



66

Number of countries of birth among people with TB

5

Median years in the U.S. at time of TB diagnosis among non-U.S.-born people

3%

Proportion of TB patients with HIV infection

22%

Proportion of TB patients with diabetes

1. Data on gender identity are not separated by cisgender or transgender. There were no TB cases among people identifying as nonbinary in 2025. 2. Defined as resistance to at least isoniazid and rifampin. 3. U.S.-born includes people born in the U.S. and U.S. territories. 4. Defined by the United Hospital Fund. Rates are per 100,000 people and are based on NYC Health Department population estimates, modified from U.S. Census Bureau interpolated intercensal population estimates, 2020-2024.